

# SERIE DUERO | DUERO SERIES



porcelánico  
porcelain



esmaltado  
glazed



<1%  
máx. 2 mm



$E \leq 0,5\%$



$5,8 \times 10^{-6} \times C^{-1}$



>40N/mm<sup>2</sup>



Urbión PEI 5  
Aranda PEI 4  
Porto/Roa PEI 2



Porto: H4  
Roa: H6



6 - 8



clase 5  
class 5



Deslizam. CTE  
Slipping resist. CTE

Urbión/Aranda: clase 3  
Porto/Roa: clase 2



Urbión/Aranda C  
Roa/Porto B



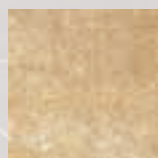
Urbión/Aranda R10  
Roa/Porto R9



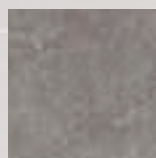
sí/yes



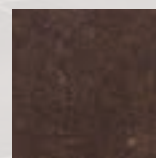
Simbología y normas en pág. 187 Symbols and Standards p. 187  
Los colores son indicativos Colours are just indicative



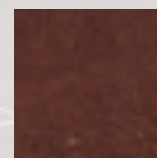
Urbión



Aranda



Porto



Roa

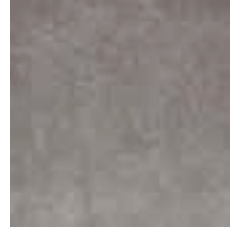
# SERIE DUERO | DUERO SERIES

## Bases Basic pieces



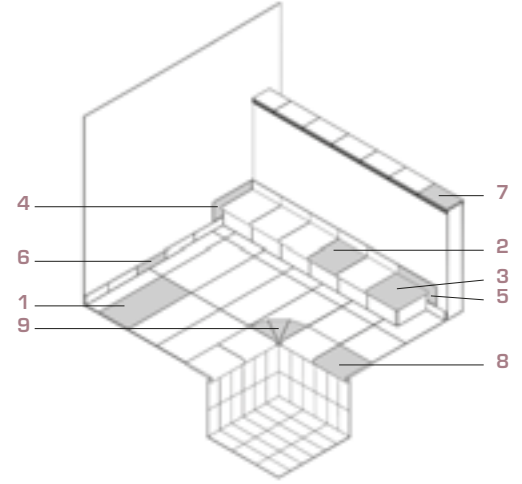
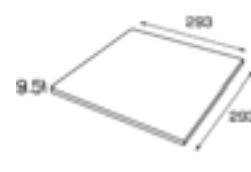
**Base 30x60**  
Tile 30x60

Urbión ■ Aranda ■  
Cod. 03351 Cod. 03350  
Porto ■ Roa ■  
Cod. 03352 Cod. 02460



**Base 30x30**  
Tile 30x30

Urbión ■ Aranda ■  
Cod. 03378 Cod. 03366  
Porto ■ Roa ■  
Cod. 03390 Cod. 02462

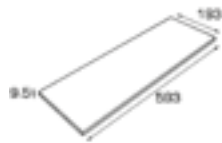


- |                            |                     |
|----------------------------|---------------------|
| 1 Base                     | Tile                |
| 2 Peldaño                  | Stair-tread         |
| 3 Esquina de peldaño       | Stair-tread corner  |
| 4 Zanquín izda.            | String left         |
| 5 Zanquín dcha.            | String right        |
| 6 Rodapié                  | Skirting board      |
| 7 Pasamanos                | Handrail            |
| 8 Remate                   | Edge                |
| 9 Esq. interior remate R50 | Internal corner R50 |



**Base 15x60**  
Tile 15x60

Urbión ■ Aranda ■  
Cod. 03376 Cod. 03364  
Porto ■ Roa ■  
Cod. 03388 Cod. 02461



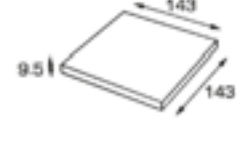
**Base 15x30**  
Tile 15x30

Urbión ■ Aranda ■  
Cod. 03377 Cod. 03365  
Porto ■ Roa ■  
Cod. 03389 Cod. 02463



**Base 15x15**  
Tile 15x15

Urbión ■ Aranda ■  
Cod. 03379 Cod. 03367  
Porto ■ Roa ■  
Cod. 03391 Cod. 02464



Artículo Item	Medidas (mm) Size (mm)	Espesor (mm) Thickness (mm)	U.M.*	U.M.*		Piezas Pieces		Peso (Kg) Weight (Kg)		
						U.M.*	U.M.*	U.M.*	U.M.*	U.M.*
<b>Base 30x30</b> Tile 30x30	293x293	9,5	M <sup>2</sup> SQM	0,99	71,29	11,11	11	20,2	20	1440
<b>Base 30x60</b> Tile 30x60	293x593	9,5	M <sup>2</sup> SQM	1,08	64,86	5,55	6	20,17	21,78	1310
<b>Base 15x15 (*)</b> Tile 15x15 (*)	143x143	9,5	M <sup>2</sup> SQM	0,99	71,29	44,44	44	19,1	18,90	1361,44
<b>Base 15x30 (*)</b> Tile 15x30 (*)	143x293	9,5	M <sup>2</sup> SQM	0,99	71,29	22,22	22	19,9	19,70	1418,67
<b>Base 15x60 (*)</b> Tile 15x60 (*)	143x593	9,5	M <sup>2</sup> SQM	1,08	34,56	11,11	12	19,9	21,49	687,74

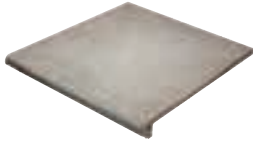
\*Unidad de Medida. Los artículos medidos en M<sup>2</sup> o ML se sirven contando la junta normal entre piezas  
\*Unit of measure. Items measured in SQM or LM are delivered assuming average joint between pieces

(\*) Disponible bajo pedido  
(\*) Available on request

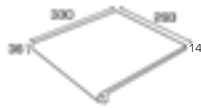


Porto 30x30

**Peldaño**  
Stair-tread



Urbión ■	Aranda ■
Cod. 03354	Cod. 03353
Porto ■	Roa ■
Cod. 03355	Cod. 02465



**Peldaño 60**  
Stair-tread 60



Urbión ■	Aranda ■
Cod. 02702	Cod. 02703
Porto ■	Roa ■
Cod. 02704	Cod. 02701



**Esquina de peldaño**  
Stair-tread corner



Urbión ■	Aranda ■
Cod. 03381	Cod. 03369
Porto ■	Roa ■
Cod. 03393	Cod. 02469



**Pasamanos 15,5**  
Handrail 15,5



Urbión ■	Aranda ■
Cod. 03380	Cod. 03368
Porto ■	Roa ■
Cod. 03392	Cod. 02470



**Zanquín izda.**  
String left side



Urbión ■	Aranda ■
Cod. 03383	Cod. 03371
Porto ■	Roa ■
Cod. 03395	Cod. 02466



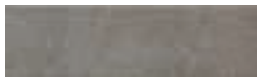
**Zanquín dcha.**  
String right side



Urbión ■	Aranda ■
Cod. 03384	Cod. 03372
Porto ■	Roa ■
Cod. 03396	Cod. 02467



**Rodapié**  
Skirting board



Urbión ■	Aranda ■
Cod. 03382	Cod. 03370
Porto ■	Roa ■
Cod. 03394	Cod. 02468



**Remate**  
Edge



Urbión ■	Aranda ■
Cod. 03385	Cod. 03373
Porto ■	Roa ■
Cod. 03397	Cod. 02471



**Esq. int. remate R250**  
Internal corner R250



Urbión ■	Aranda ■
Cod. 02505	Cod. 02506
Porto ■	Roa ■
Cod. 02507	Cod. 02508



**Esq. ext. remate**  
External corner



Urbión ■ Aranda ■  
Cod. 03387 Cod. 03375  
Porto ■ Roa ■  
Cod. 03399 Cod. 02473



**Esq. int. remate R50**  
Internal corner R50



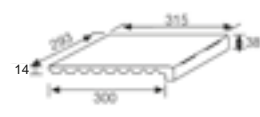
Urbión ■ Aranda ■  
Cod. 03386 Cod. 03374  
Porto ■ Roa ■  
Cod. 03398 Cod. 02472



**Peldaño/Vierteaguas**  
Stair-tread/Wash



Urbión ■ Aranda ■  
Cod. 01552 Cod. 01551  
Porto ■ Roa ■  
Cod. 01553 Cod. 01554



Artículo Item	Medidas (mm) Size (mm)	Espesor (mm) Thickness (mm)	U.M.*	U.M.*		Piezas Pieces		Peso (Kg) Weight (Kg)		
						U.M.*		U.M.*		
<b>Peldaño</b> Stair-tread	293x330	14	Pz. Pc.	6	378	1	6	2,83	17	1070
<b>Peldaño 60</b> Stair-tread 60	593x330	14	Pz. Pc.	4	72	1	4	5,72	22,91	412,4
<b>Esquina de peldaño</b> Stair-tread corner	330x330	14	Pz. Pc.	2	84	1	2	2,5	5	225
<b>Zanquín izda.</b> String left	395x80/170	9,5	Pz. Pc.	20	540	1	20	0,81	16,2	453
<b>Zanquín dcha.</b> String right	395x80/170	9,5	Pz. Pc.	20	540	1	20	0,81	16,2	453
<b>Rodapié</b> Skirting board	293x80	9,5	ML LM	10,21	367,57	3,33	34	1,73	17,6	650
<b>Pasamanos 15,5</b> Handrail 15,5	293x180x36	12	Pz. Pc.	4	288	1	4	1,63	6,5	485
<b>Remate</b> Edge	293x275x36	15	Pz. Pc.	4	288	1	4	3,3	13	962
<b>Esq. ext. remate</b> External corner	276x276	15	Set Set	2	—	3	6	2,31	4,6	—
<b>Esq. int. remate R50</b> Internal corner R50	276x276	15	Set Set	2	—	3	6	3,30	6,60	—
<b>Esq. int. remate R250</b> Internal corner R250	276x276	15	Set Set	1	—	3	3	5,7	5,7	—
<b>Peldaño/Vierteaguas</b> Stair-tread/Wash	293x315x38	14	Pz. Pc.	8	252	1	8	2,71	21,68	725

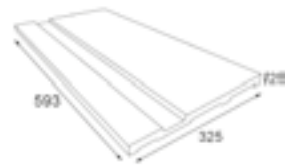
\* Unidad de Medida. Los artículos medidos en M<sup>2</sup> o ML se sirven contando la junta normal entre piezas  
\* Unit of measure. Items measured in SQM or LM are delivered assuming average joint between pieces

Piezas especiales Special pieces

**Borde desbordante 60 cm.**  
*Overflowing edge 60 cm.*



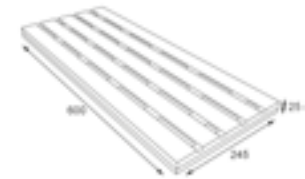
Urbión ■ Aranda ■  
Cod. 02122 Cod. 02123



**Rejilla cerámica**  
*Ceramic grid*



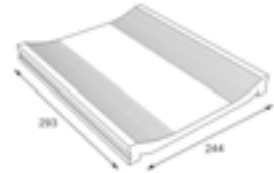
Urbión ■ Aranda ■  
Cod. 02126 Cod. 02127



**Canaleta\***  
*Overflow channel*



Urbión ■ Aranda ■  
Cod. 02130 Cod. 02131



\* Disponible Canaleta con desagüe  
\* Available Overflow channel with drainage

**Esq. int. borde desbordante**  
*Overflowing internal edge*



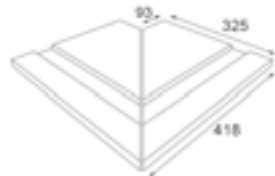
Urbión ■ Aranda ■  
Cod. 02134 Cod. 02136



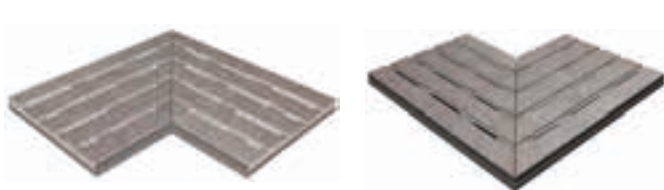
**Esq. ext. borde desbordante**  
*Overflowing external edge*



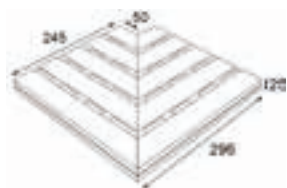
Urbión ■ Aranda ■  
Cod. 02135 Cod. 02137



**Esq. int./ext. rejilla cerámica**  
*Internal/external corner ceramic grid*










Urbión ■ Aranda ■  
Cod. 02142 Cod. 02144



Anchura recomendada de la junta de colocación: 6 - 8 mm  
A 6 - 8 mm wide installation joint is recommended.



Aranda

Artículo <i>Item</i>	Medidas (mm) <i>Size (mm)</i>	Espesor (mm) <i>Thickness (mm)</i>	U.M.*	U.M.*		Piezas <i>Pieces</i>		Peso (Kg) <i>Weight (Kg)</i>		
						U.M.* 		U.M.* 		
<b>Borde desbordante 60 cm.</b> <i>Overflowing edge 60 cm.</i>	593x325	25	Pz. Pc.	4	72	1	4	7,5	30	555
<b>Rejilla cerámica</b> <i>Ceramic grid</i>	600x245	25	Pz. Pc.	3	243	1	3	6,15	18,45	1509,45
<b>Esq. int. borde desbordante</b> <i>Overflowing internal edge</i>	444x325x119	25	Jg. Set	2	—	2	4	7	14	—
<b>Esq. ext. borde desbordante</b> <i>Overflowing external edge</i>	418x325x93	25	Jg. Set	2	—	2	4	7	14	—
<b>Esq. int./ext. rejilla cerámica</b> <i>Internal/external corner ceramic grid</i>	397x245x152	25	Jg. Set	2	—	2	4	5,5	11	—
<b>Canaleta</b> <i>Overflow channel</i>	293x244	—	Pz. Pc.	4	288	1	4	2,5	9,99	734

\* Unidad de Medida. Los artículos medidos en M<sup>2</sup> o ML se sirven contando la junta normal entre piezas  
 \*Unit of measure. Items measured in SQM or LM are delivered assuming average joint between pieces