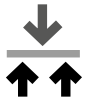



Gres Porcellanato

Porcelain Stoneware - Gres Cerame Fin - Feinsteinzeug - □□□□□□□□□□

CARATTERISTICA TECNICA PHYSICAL PROPERTY CARACTERISTIQUE TECHNIQUE TECHNISCHE DATEN CARACTERÍSTICA TÉCNICA ТЕХНИЧЕСКАЯ ХАРАКТЕРИСТИКА	NORMA NORMS/NORM/ NORME/ NORMAS/ НОРМЫ	VALORE PRESCRITTO DELLA NORMA REQUIRED STANDARDS VALEUR PRESCRIPTE PAR LES NORMES VALORES REQUERIDOS NORM/VORGABE ЗНАЧЕНИЕ, ПРЕДПИСАННОЕ НОРМОЙ	VALORI VALUES VALEURS WERTE VALORES ЗНАЧЕНИЕ
 <p>Resistenza alla flessione Bending Strength Résistance à la flexion Biegefestigkeit Resistencia a la flexión Предел прочности при изгибе</p>	UNI EN ISO 10545-4	$N \geq 27N / mm^2$	$45,1 N / mm^2$
 <p>Resistenza al gelo Frost resistance Résistance au gel Frostwiderstandsfähigkeit Resistencia a la helada Морозостойкость</p>	UNI EN ISO 10545-12	<p>Nessun campione deve presentare rotture o alterazioni apprezzabili della superficie. No sample must show alterations to the surface Les échantillons ne doivent pas présenter de ruptures ou d'altérations considérables de la surface. Die Muster dürfen weder Bruch noch Schäden an der Oberfläche aufweisen. Ninguna muestra debe presentar roturas o alteraciones apreciables de la superficie Ни один из образцов не должен иметь трещин или других заметных изменений поверхности</p>	<p>Non gelivi Frost-proof Non gélifs Frostsicher No presentan gelivación Морозостойка</p>



inkjet solution 

Esempio di battiscopa realizzato utilizzando la tecnica digitale

Example of digital printed skirting

Exemple de plinthe réalisé avec technologie numérique

Beispiel für Sockel in Digitaldruck Verfahren gefertigt

Ejemplo de rodapié producido con técnica digital

3 1/4"x13" 8X33,3

AG



J85412 AG BISCOTTO

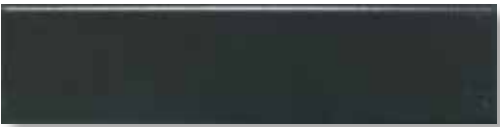


J85411 AG AMBRA



J85413 AG MATTONE

ARDESIA



S52634 ARDESIA

AT



S53645 AT 10



S53646 AT 20



S53647 AT 30

IMBALLI . PACKING . EMBALLAGE . VERPACKUNG . ПИПАКОВКА

FORMATO - SIZE - FORMAT FORMAT - FORMATO - ФОРМАТ	PZ/BOX	ML/BOX	KG/ML	BOX/PALLET	ML/PALLET	KG/PALLET	EURO < 1 PALLET	EURO ≥1 PALLET
Battiscopa 8x33,3 (3 1/4"x13")	27	9	1,25	66	594	742,50	4,00	ml/m

Contributo spese imballo € 10,00/pal (netto). - Packing charges € 10,00/pal (net)

3 1/4"x13" 8X33,3

BG



S52664 BG 314

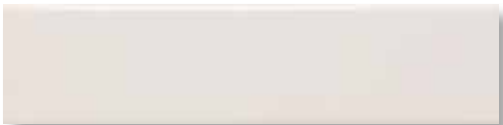


S52661 BG 311

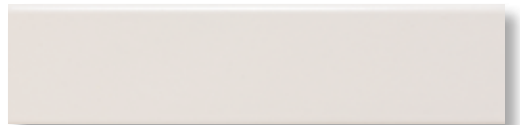


S52663 BG 313

BIANCO



S52540 300 L



S52545 300 M

IMBALLI . PACKING . EMBALLAGE . VERPACKUNG . ПИТАКОВКА

FORMATO - SIZE - FORMAT FORMAT - FORMATO - ФОРМАТ	PZ/BOX	ML/BOX	KG/ML	BOX/PALLET	ML/PALLET	KG/PALLET	EURO < 1 PALLET	EURO ≥ 1 PALLET
Battiscopa 8x33,3 (3 1/4"x13")	27	9	1,25	66	594	742,50	4,00	ml/m

Contributo spese imballo € 10,00/pal (netto). - Packing charges € 10,00/pal (net)

3 1/4"x13" 8X33,3

BR



J85549 BR CREAM



J85552 BR RUST



J85551 BR RED



J85553 BR UMBER



J85550 BR DARK

BT



S52668 BT 401



S52673 BT 409



S52671 BT 404

IMBALLI . PACKING . EMBALLAGE . VERPACKUNG . ПИПАКОВКА

FORMATO - SIZE - FORMAT FORMAT - FORMATO - ФОРМАТ	PZ/BOX	ML/BOX	KG/ML	BOX/PALLET	ML/PALLET	KG/PALLET	EURO < 1 PALLET	EURO ≥ 1 PALLET
Battiscopa 8x33,3 (3 1/4"x13")	27	9	1,25	66	594	742,50	4,00	ml/m

Contributo spese imballo € 10,00/pal (netto). - Packing charges € 10,00/pal (net)

3 1/4"x13" 8X33,3

CM



S52678 CM 71



S52681 CM 72



S52683 CM 73



S52684 CM 74



S52686 CM 76



S52685 CM 75



S52688 CM 78



S52687 CM 77

ED



S52735 ED 1



S52736 ED 2



S52737 ED 3

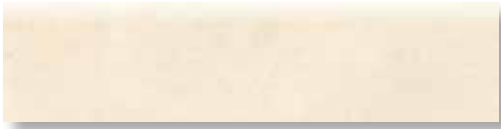
IMBALLI . PACKING . EMBALLAGE . VERPACKUNG . ПИПАКОВКА

FORMATO - SIZE - FORMAT FORMAT - FORMATO - ФОРМАТ	PZ/BOX	ML/BOX	KG/ML	BOX/PALLET	ML/PALLET	KG/PALLET	EURO < 1 PALLET	EURO ≥ 1 PALLET
Battiscopa 8x33,3 (3 1/4"x13")	27	9	1,25	66	594	742,50	4,00	ml/m

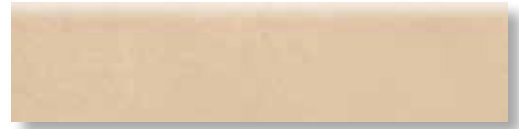
Contributo spese imballo € 10,00/pal (netto). - Packing charges € 10,00/pal (net)

3 1/4"x13" 8X33,3

GL



S53705 GL 331



S53708 GL 334



S53706 GL 332

JL



J85432 JL BIANCO



J85431 JL BEIGE



J85433 JL GRIGIO



J85434 JL ROSSO

IMBALLI . PACKING . EMBALLAGE . VERPACKUNG . ПИТАКОВКА

FORMATO - SIZE - FORMAT FORMAT - FORMATO - ФОРМАТ	PZ/BOX	ML/BOX	KG/ML	BOX/PALLET	ML/PALLET	KG/PALLET	EURO < 1 PALLET	EURO ≥ 1 PALLET
Battiscopa 8x33,3 (3 1/4"x13")	27	9	1,25	66	594	742,50	4,00	ml/m

Contributo spese imballo € 10,00/pal (netto). - Packing charges € 10,00/pal (net)

3 1/4"x13" 8X33,3

LMI



S53299 LMI 083



S53300 LMI 301



S53297 LMI 335



S53068 LMI KRETA

MO



S52926 MO 1



S52927 MO 2



S52928 MO 3



S52929 MO 4

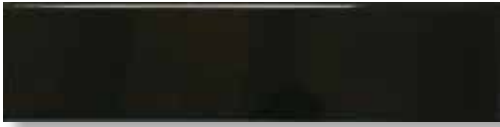
IMBALLI . PACKING . EMBALLAGE . VERPACKUNG . ПИПАКОВКА

FORMATO - SIZE - FORMAT FORMAT - FORMATO - ФОРМАТ	PZ/BOX	ML/BOX	KG/ML	BOX/PALLET	ML/PALLET	KG/PALLET	EURO < 1 PALLET	EURO ≥ 1 PALLET
Battiscopa 8x33,3 (3 1/4"x13")	27	9	1,25	66	594	742,50	4,00	ml/m

Contributo spese imballo € 10,00/pal (netto). - Packing charges € 10,00/pal (net)

3 1/4"x13" 8X33,3

NERO



S52942 33 NERO

PDI



S54281 ALBIANO ROSSO



S54280 VARANA GRIGIO



S54279 SALENTO GIALLO



S54309 ASIAGO BIANCO

IMBALLI . PACKING . EMBALLAGE . VERPACKUNG . ПИТАКОВКА

FORMATO - SIZE - FORMAT FORMAT - FORMATO - ФОРМАТ	PZ/BOX	ML/BOX	KG/ML	BOX/PALLET	ML/PALLET	KG/PALLET	EURO < 1 PALLET	EURO ≥ 1 PALLET
Battiscopa 8x33,3 (3 1/4"x13")	27	9	1,25	66	594	742,50	4,00	ml/m

Contributo spese imballo € 10,00/pal (netto). - Packing charges € 10,00/pal (net)

3 1/4"x13" 8X33,3

RB



S53053 RB 1



S53054 RB 2



S53056 RB 3



S53057 RB 4

RE



S53709 RE 332



S53710 RE 333



S53711 RE 334



S53712 RE 335

IMBALLI . PACKING . EMBALLAGE . VERPACKUNG . ПИПАКОВКА

FORMATO - SIZE - FORMAT FORMAT - FORMATO - ФОРМАТ	PZ/BOX	ML/BOX	KG/ML	BOX/PALLET	ML/PALLET	KG/PALLET	EURO < 1 PALLET	EURO ≥ 1 PALLET
Battiscopa 8x33,3 (3 1/4"x13")	27	9	1,25	66	594	742,50	4,00	ml/m

Contributo spese imballo € 10,00/pal (netto). - Packing charges € 10,00/pal (net)

3 1/4"x13" 8X33,3

RO



S53066 RO 81



S53070 RO 82



S53072 RO 83

TC



S53145 TC 3



S53150 TC 7

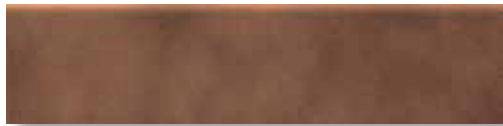
IMBALLI . PACKING . EMBALLAGE . VERPACKUNG . ПИПАКОВКА

FORMATO - SIZE - FORMAT FORMAT - FORMATO - ФОРМАТ	PZ/BOX	ML/BOX	KG/ML	BOX/PALLET	ML/PALLET	KG/PALLET	EURO < 1 PALLET	EURO ≥ 1 PALLET
Battiscopa 8x33,3 (3 1/4"x13")	27	9	1,25	66	594	742,50	4,00	ml/m

Contributo spese imballo € 10,00/pal (netto). - Packing charges € 10,00/pal (net)

3 1/4"x13" 8X33,3

VINTAGE



S52554 325



S52558 332



S52562 333



S52564 334



S52568 335



S52583 369

IMBALLI . PACKING . EMBALLAGE . VERPACKUNG . ПИТАКОВКА

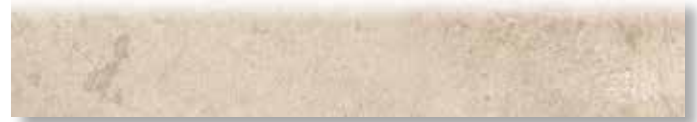
FORMATO - SIZE - FORMAT FORMAT - FORMATO - ФОРМАТ	PZ/BOX	ML/BOX	KG/ML	BOX/PALLET	ML/PALLET	KG/PALLET	EURO < 1 PALLET	EURO ≥1 PALLET
Battiscopa 8x33,3 (3 1/4"x13")	27	9	1,25	66	594	742,50	4,00	ml/m

Contributo spese imballo € 10,00/pal (netto). - Packing charges € 10,00/pal (net)

AR



J85514 AR BIANCO



J85516 AR SABBIA



J85515 AR BRUNO



J85951 AR BRUCIATO



J85517 AR TORTORA



J85952 AR PIOMBO

CH



J85220 CH GRIGIO



J85223 CH NOCE



J85222 CH NATURALE



J85221 CH MIELE

IMBALLI . PACKING . EMBALLAGE . VERPACKUNG . ПИРАКОВКА

FORMATO - SIZE - FORMAT FORMAT - FORMATO - ФОРМАТ	PZ/BOX	ML/BOX	KG/ML	BOX/PALLET	ML/PALLET	KG/PALLET	EURO < 1 PALLET	EURO ≥ 1 PALLET
Battiscopa 8x45 (3 1/4"x18")	30	13,5	1,27	42	567	720	5,40	ml/m

Contributo spese imballo € 10,00/pal (netto). - Packing charges € 10,00/pal (net)

CI



J84213 CI ANTRACITE



J84208 CI BEIGE



J84207 CI GRIGIO

EW



S53725 EW 10



S53724 EW 30



S53726 EW 20



S53728 EW 40

IMBALLI . PACKING . EMBALLAGE . VERPACKUNG . ПИРАКОВКА

FORMATO - SIZE - FORMAT FORMAT - FORMATO - ФОРМАТ	PZ/BOX	ML/BOX	KG/ML	BOX/PALLET	ML/PALLET	KG/PALLET	EURO < 1 PALLET	EURO ≥1 PALLET
Battiscopa 8x45 (3 1/4"x18")	30	13,5	1,27	42	567	720	5,40	ml/m

Contributo spese imballo € 10,00/pal (netto). - Packing charges € 10,00/pal (net)

FO



S53591 FO 01



S53596 FO 06



S53593 FO 03



S53631 FO 07



S54023 FO 08



S54024 FO 09

GD



J85863 GD WHITE



J85862 GD GREY



J85731 GD MULTICOLOR

IMBALLI . PACKING . EMBALLAGE . VERPACKUNG . ПИРАКОВКА

FORMATO - SIZE - FORMAT FORMAT - FORMATO - ФОРМАТ	PZ/BOX	ML/BOX	KG/ML	BOX/PALLET	ML/PALLET	KG/PALLET	EURO < 1 PALLET	EURO ≥1 PALLET
Battiscopa 8x45 (3 1/4"x18")	30	13,5	1,27	42	567	720	5,40	ml/m

Contributo spese imballo € 10,00/pal (netto). - Packing charges € 10,00/pal (net)

GR



J84211 GR PECE



J84212 GR CENERE



J84206 GR CREMA

HS



J85847 HS 01



J85848 HS 02



J85846 HS 03



J85949 HS 05



J85950 HS 06



J85948 HS 04

IMBALLI . PACKING . EMBALLAGE . VERPACKUNG . ПИРАКОВКА

FORMATO - SIZE - FORMAT FORMAT - FORMATO - ФОРМАТ	PZ/BOX	ML/BOX	KG/ML	BOX/PALLET	ML/PALLET	KG/PALLET	EURO < 1 PALLET	EURO ≥1 PALLET
Battiscopa 8x45 (3 1/4"x18")	30	13,5	1,27	42	567	720	5,40	ml/m

Contributo spese imballo € 10,00/pal (netto). - Packing charges € 10,00/pal (net)

JU



S54061 BROWN



S54062 CAPUCINO



S54065 MUD



S54064 LIGHT GREY



S54063 HONEY



S54066 WHITE



S54236 CERULEO



S54235 AVORIO



S54341 BLACK

IMBALLI . PACKING . EMBALLAGE . VERPACKUNG . ПИРАКОВКА

FORMATO - SIZE - FORMAT FORMAT - FORMATO - ФОРМАТ	PZ/BOX	ML/BOX	KG/ML	BOX/PALLET	ML/PALLET	KG/PALLET	EURO < 1 PALLET	EURO ≥ 1 PALLET
Battiscopa 8x45 (3 1/4"x18")	30	13,5	1,27	42	567	720	5,40	ml/m

Contributo spese imballo € 10,00/pal (netto). - Packing charges € 10,00/pal (net)

MT



J85145 MT ALMOND



J85146 MT AZUR



J85147 MT BEIGE



J85149 MT RED



J85148 MT BROWN

MW



J84304 MW TOBACCO



J84303 MW MUSK



J84300 MW BEIGE



J84301 MW GREY



J84302 MW DUST

IMBALLI . PACKING . EMBALLAGE . VERPACKUNG . ПИРАКОВКА

FORMATO - SIZE - FORMAT FORMAT - FORMATO - ФОРМАТ	PZ/BOX	ML/BOX	KG/ML	BOX/PALLET	ML/PALLET	KG/PALLET	EURO < 1 PALLET	EURO ≥ 1 PALLET
Battiscopa 8x45 (3 1/4"x18")	30	13,5	1,27	42	567	720	5,40	ml/m

Contributo spese imballo € 10,00/pal (netto). - Packing charges € 10,00/pal (net)

MY



J72015 MY BLACK



J72016 MY WHITE

NA



J84455 NA ASH



J84458 NA CREAM



J84456 NA BEIGE



J84459 NA NUT



J84457 NA COFFEE



J84460 NA TOBACCO

IMBALLI . PACKING . EMBALLAGE . VERPACKUNG . ПИРАКОВКА

FORMATO - SIZE - FORMAT FORMAT - FORMATO - ФОРМАТ	PZ/BOX	ML/BOX	KG/ML	BOX/PALLET	ML/PALLET	KG/PALLET	EURO < 1 PALLET	EURO ≥ 1 PALLET
Battiscopa 8x45 (3 1/4"x18")	30	13,5	1,27	42	567	720	5,40	ml/m

Contributo spese imballo € 10,00/pal (netto). - Packing charges € 10,00/pal (net)

NP



J72019 NP CASORIA



J72020 NP NOLA

SO



S54423 SO ALMOND



S54424 SO GREY



S54425 SO SAND



S54426 SO TOBACCO

IMBALLI . PACKING . EMBALLAGE . VERPACKUNG . ПИПАКОВКА

FORMATO - SIZE - FORMAT FORMAT - FORMATO - ФОРМАТ	PZ/BOX	ML/BOX	KG/ML	BOX/PALLET	ML/PALLET	KG/PALLET	EURO < 1 PALLET	EURO ≥1 PALLET
Battiscopa 8x45 (3 1/4"x18")	30	13,5	1,27	42	567	720	5,40	ml/m

Contributo spese imballo € 10,00/pal (netto). - Packing charges € 10,00/pal (net)

TA



J84325 TA CHOCOLATE



J84326 TA CAPPUCCINO



J84327 TA HONEY



J84328 TA CREAM



J84586 TA FOG



J84587 TA ICE



J84561 TA ALBA



J85144 TA GILVA



J84588 TA PINEA



J84562 TA QUERCEA

IMBALLI . PACKING . EMBALLAGE . VERPACKUNG . ПИРАКОВКА

FORMATO - SIZE - FORMAT FORMAT - FORMATO - ΦΟΡΜΑΤ	PZ/BOX	ML/BOX	KG/ML	BOX/PALLET	ML/PALLET	KG/PALLET	EURO < 1 PALLET	EURO ≥ 1 PALLET
Battiscopa 8x45 (3 1/4"x18")	30	13,5	1,27	42	567	720	5,40	ml/m

Contributo spese imballo € 10,00/pal (netto). - Packing charges € 10,00/pal (net)

VS



J85208 VS PANNA



J85209 VS SABBIA



J85206 VS MIELE



J85207 VS MORO



J85205 VS FUMO



J85295 VS NATURALE

IMBALLI . PACKING . EMBALLAGE . VERPACKUNG . ПИРАКОВКА

FORMATO - SIZE - FORMAT FORMAT - FORMATO - ФОРМАТ	PZ/BOX	ML/BOX	KG/ML	BOX/PALLET	ML/PALLET	KG/PALLET	EURO < 1 PALLET	EURO ≥1 PALLET
Battiscopa 8x45 (3 1/4"x18")	30	13,5	1,27	42	567	720	5,40	ml/m

Contributo spese imballo € 10,00/pal (netto). - Packing charges € 10,00/pal (net)