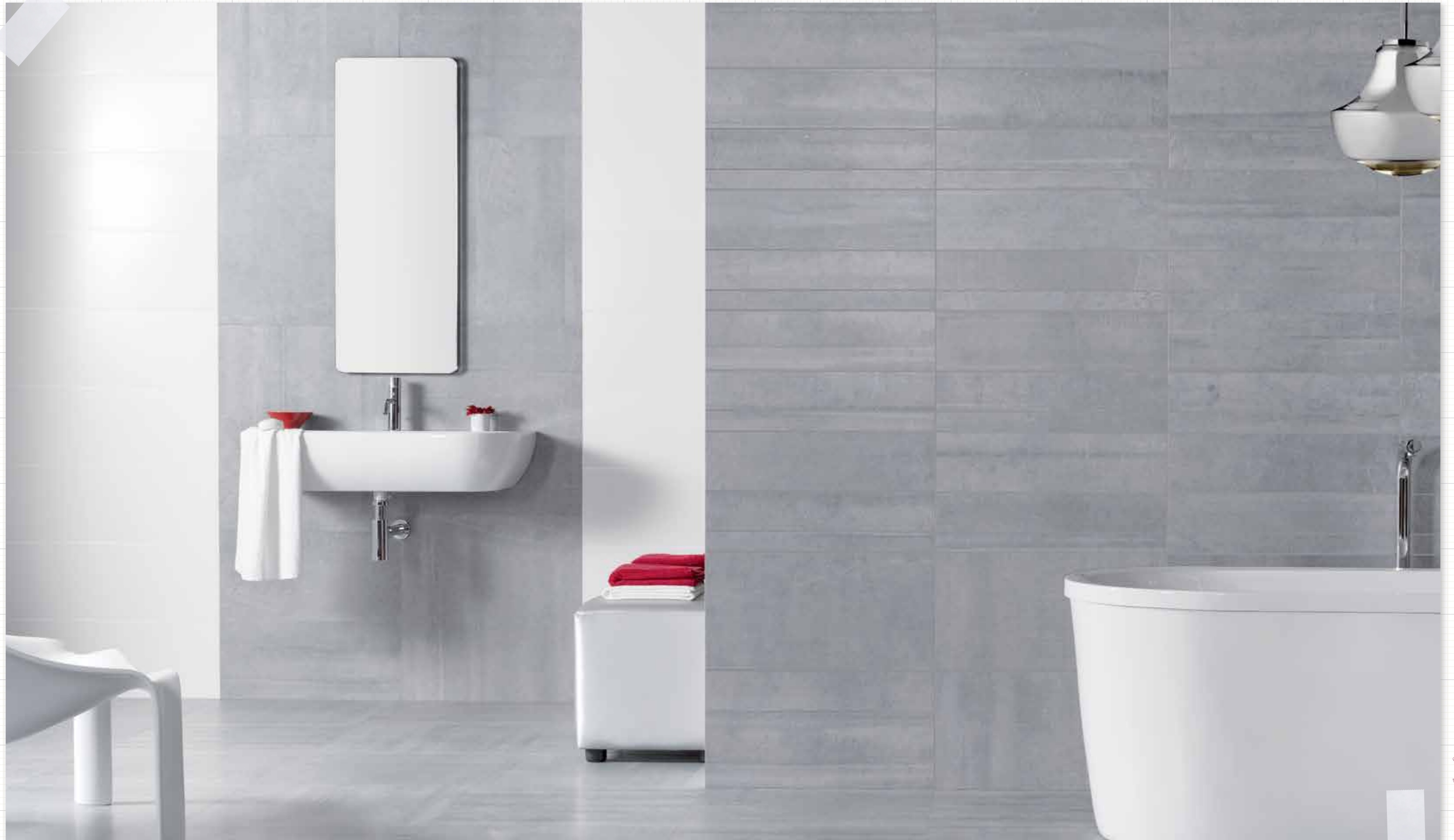




\*Fossil-A/90,7x90,7/R Fossil-G/90,7x90,7/R D. Foss

Porcelain



\*Fossil-A/60,7x60,7/R Fossil-A/30,2x60,7/R Fossil-A/15x60,7/R Fossil-A/9,9x60,7/R

\*Fossil-A/4,9x60,7/R Temptation-W

Porcelain





\*Fossil-G/60,7x60,7/R Fossil-G/30,2x60,7/R Fossil-G/15x60,7/R Fossil-G/9,9x60,7/R

\*Fossil-G/4,9x60,7/R



- V3 29
- 13096 FOSSIL-A/90,7x90,7/R B-48 (4-1-EH)\*\*\*\* R-9
- 13810 FOSSIL-A/90,7x90,7/L/R B-42 (4-0-EH)\*\*\*\*
- 13085 FOSSIL-A/91,5x91,5 B-49 (4-1-EH)\*\*\* R-9



- 15536 FOSSIL-A/A/61x61x2 B-48 (5-3-EH)\*\*\*\* R-11 A+B+C
- 15966 FOSSIL-A/A/60x60x2/R B-51 (5-3-EH)\*\*\*\* R-11 A+B+C



- 07605 ALUMINIO/90 P-39 (0,5x90)
- 07021 ACERO/90 P-30 (1,5x90)



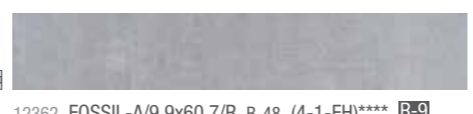
- V3 29
- 17004 FOSSIL-A/60,7x60,7/R B-33 (4-1-EH)\*\*\*\* R-9
- 14312 FOSSIL-A/60,7x60,7/L/R B-38 (4-0-EH)\*\*\*\*
- 16994 FOSSIL-A/61,5x61,5 B-28 (4-1-EH)\*\*\*\* R-9



- V3 58
- 12360 FOSSIL-A/30,2x60,7/R B-39 (4-1-EH)\*\*\*\* R-9
- 12355 FOSSIL-A/30,7x61,5 B-24 (4-1-EH)\*\*\*\* R-9



- V3 58
- 12361 FOSSIL-A/15x60,7/R B-41 (4-1-EH)\*\*\*\* R-9



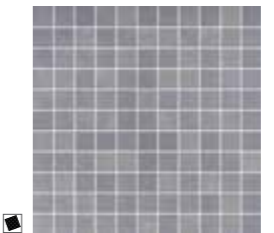
- V3 58
- 12362 FOSSIL-A/9,9x60,7/R B-48 (4-1-EH)\*\*\*\* R-9



- V3 58
- 12365 FOSSIL-A/4,9x60,7/R B-42 (4-1-EH)\*\*\*\* R-9



- V3 29
- 18175 FOSSIL-A/45x90,7/R B-38 (4-1-EH)\*\*\*\*



- 12253 D. FOSSIL-A P-56 (30x30)



- 12663 D. SIL-A/R P-41 (15x30,2)



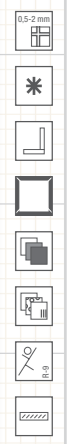
\*Fossil-A/90,7x90,7/R

PACKING

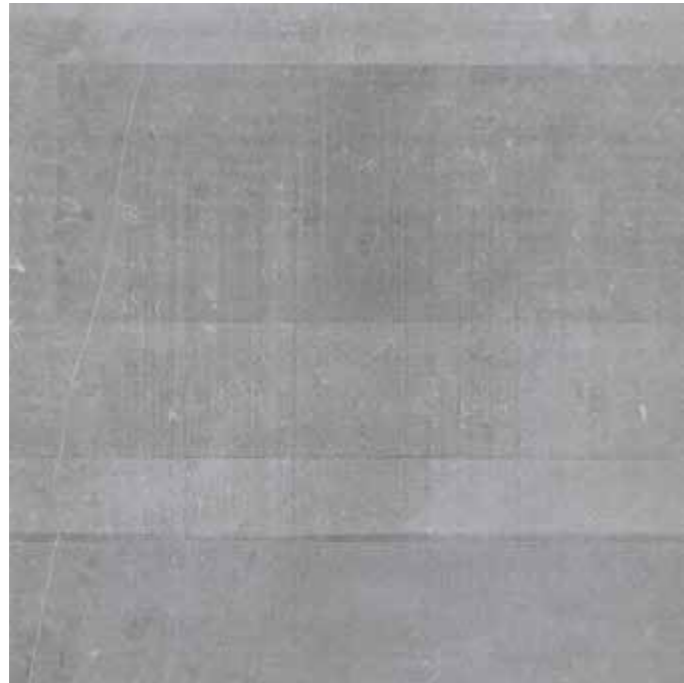
Formato/Sizes	Cajas/Boxes				Normal Pallet				Euro Pallet				Cont./20' 21500 Kg.	Cont./20' 24000 Kg.
	Cm.	Inch.	Pzs/Units	M <sup>2</sup> /SQ. M	Kg	Cjas/Boxes	M <sup>2</sup> /SQ. M	Kg	Cjas/Boxes	M <sup>2</sup> /SQ. M	Kg	M <sup>2</sup> /SQ. M		
90,7 x 90,7	35,7 x 35,7	1	0,82	22	36	29,52	801	-	-	-	792	884		
91,5 x 91,5	36 x 36	1	0,84	22	36	30,24	833	-	-	-	780	871		
60,7 x 60,7	23,9 x 23,9	3	1,11	24	-	-	-	36	39,96	893	962	1074		
61,5 x 61,5	24,2 x 24,2	3	1,13	25	-	-	-	36	40,68	930	941	1050		
61 x 61 x 2	24 x 24	2	0,74	34	-	-	-	30	22,2	1037	460	514		
30,2 x 60,7	11,9 x 23,9	5	0,92	19	-	-	-	48	44,16	935	1016	1134		
30,7 x 61,5	12,1 x 24,2	5	0,94	20	-	-	-	48	45,12	998	972	1085		
15 x 60,7	5,9 x 23,9	9	0,82	17	48	39,36	831	-	-	-	1019	1137		
9,9 x 60,7	3,9 x 23,9	13	0,78	16	64	49,92	1051	-	-	-	1021	1140		
4,9 x 60,7	1,9 x 23,9	27	0,8	17	48	38,4	826	-	-	-	1000	1116		

PIEZA COMPLEMENTARIA - COMPLEMENTARY PIECE

RODAPIE - SKIRTING	PELDAÑO TÉCNICO - TECHNICAL STAIR - THREAD	PELDAÑO ROMO - ROUNDED STAIR - THREAD	S.K.I.	S.K.D.	Z.R.I.	Z.R.D.
8x90,7 P-44 8x91,5 P-41 8x60,7 P-34 8x61,5 P-31	30x90,7 P-76 30x91,5 P-70 30x60,7 P-54 30x61,5 P-54	30x90,7 P-61 30x91,5 P-71 30x60,7 P-64 30x61,5 P-64				8x30 P-55 8x30 P-53







V3  
29

- 13097 FOSSIL-G/90,7x90,7/R B-48 (4-1-EH)\*\*\*\* R-9
- 13811 FOSSIL-G/90,7x90,7/L/R B-42 (4-0-EH)\*\*\*\*
- 13086 FOSSIL-G/91,5x91,5 B-49 (4-1-EH)\*\*\*\* R-9



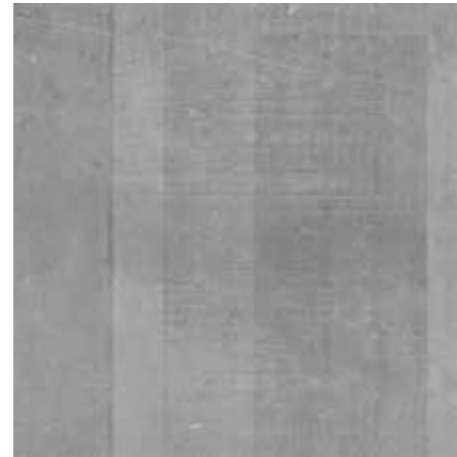
13291 D. FOSS P-55 (30x45)



07605 ALUMINIO/90 P-39 (0,5x90)



07021 ACERO/90 P-30 (1,5x90)



V3  
29

- 17796 FOSSIL-G/60,7x60,7/R B-33 (4-1-EH)\*\*\*\* R-9
- 14313 FOSSIL-G/60,7x60,7/L/R B-38 (4-0-EH)\*\*\*\*
- 17983 FOSSIL-G/61,5x61,5 B-28 (4-1-EH)\*\*\*\* R-9



V3  
58

- 12521 FOSSIL-G/30,2x60,7/R B-39 (4-1-EH)\*\*\*\* R-9
- 12522 FOSSIL-G/30,7x61,5 B-24 (4-1-EH)\*\*\*\* R-9



V3

12520 FOSSIL-G/15x60,7/R B-41 (4-1-EH)\*\*\*\* R-9



V3

12524 FOSSIL-G/9,9x60,7/R B-48 (4-1-EH)\*\*\*\* R-9



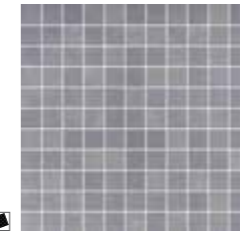
V3

12523 FOSSIL-G/4,9x60,7/R B-42 (4-1-EH)\*\*\*\* R-9



V3  
29

18176 FOSSIL-G/45x90,7/R B-38 (4-1-EH)\*\*\*\*



12442 D. FOSSIL-G P-56 (30x30)



12665 D. SIL-G/R P-41 (15x30,2)



\*Fossil-G/60,7x60,7/R

PACKING

Formato/Sizes	Cajas/Boxes				Normal Pallet				Euro Pallet			
	Cm.	Inch.	Pzs/Units	M <sup>2</sup> /SQ. M	Kg	Cjas/Boxes	M <sup>2</sup> /SQ. M	Kg	Cjas/Boxes	M <sup>2</sup> /SQ. M	Kg	Cont./20' 21500 Kg.
90,7 x 90,7	35,7 x 35,7	1	0,82	22	36	29,52	801	-	-	-	792	884
91,5 x 91,5	36 x 36	1	0,84	22	36	30,24	833	-	-	-	780	871
60,7 x 60,7	23,9 x 23,9	3	1,11	24	-	-	-	36	39,96	893	962	1074
61,5 x 61,5	24,2 x 24,2	3	1,13	25	-	-	-	36	40,68	930	941	1050
61 x 61 x 2	24 x 24	2	0,74	34	-	-	-	30	22,2	1037	460	514
30,2 x 60,7	11,9 x 23,9	5	0,92	19	-	-	-	48	44,16	935	1016	1134
30,7 x 61,5	12,1 x 24,2	5	0,94	20	-	-	-	48	45,12	998	972	1085
15 x 60,7	5,9 x 23,9	9	0,82	17	48	39,36	831	-	-	-	1019	1137
9,9 x 60,7	3,9 x 23,9	13	0,78	16	64	49,92	1051	-	-	-	1021	1140
4,9 x 60,7	1,9 x 23,9	27	0,8	17	48	38,4	826	-	-	-	1000	1116

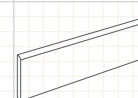
PIEZA COMPLEMENTARIA - COMPLEMENTARY PIECE

RODAPIE - SKIRTING

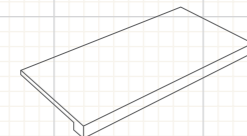
PELDAÑO TÉCNICO - TECHNICAL STAIR - THREAD

PELDAÑO ROMO - ROUNDED STAIR - THREAD

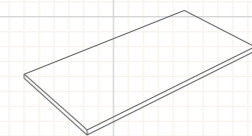
S.K.I. S.K.D. Z.R.I. Z.R.D.



- 8x90,7 P-44
- 8x91,5 P-41
- 8x60,7 P-34
- 8x61,5 P-31



- 30x90,7 P-76
- 30x91,5 P-70
- 30x60,7 P-54
- 30x61,5 P-54



- 30x90,7 P-61
- 30x91,5 P-71
- 30x60,7 P-64
- 30x61,5 P-64



- 8x30 P-55
- 8x30 P-53