



COTTO ETRUSCO



GRES FINE PORCELLANATO
MONOCIBEC
PAVIMENTI AD ALTA RESISTENZA



Tuscania

UNI EN 176 BI GL - SPESSORE MAGGIORATO MM.10



17801 Fascia Incisa Tuscania
cm. 16,5x33,3



17805
Ang. Inciso Tuscania
cm. 16,5x16,5



18192 Tuscania
cm. 16,5x33,3



18020 Tuscania
cm. 16,5x16,5



17291 Tuscania
cm. 33,3x33,3

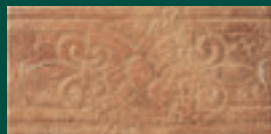


PORCELLANATO

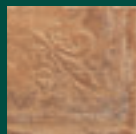


Veio

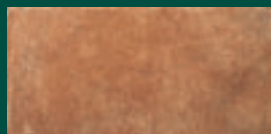
UNI EN 176 BI GL - SPESSORE MAGGIORATO MM.10



17799 Fascia Incisa Veio
cm. 16,5x33,3



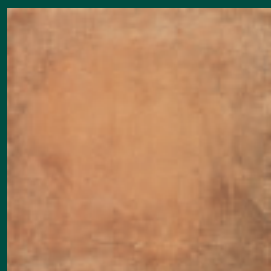
17803
Ang. Inciso Veio
cm. 16,5x16,5



18143 Veio
cm. 16,5x33,3



17798 Veio
cm. 16,5x16,5



17761 Veio
cm. 33,3x33,3



PORCELLANATO



Pienza

UNI EN 176 BI GL - SPESSORE MAGGIORATO MM.10



17802 Fascia Incisa Pienza
cm. 16,5x33,3



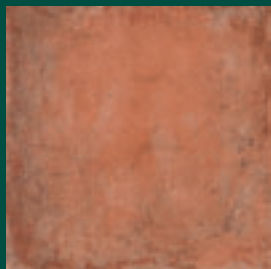
17806
Ang. Inciso Pienza
cm. 16,5x16,5



18173 Pienza
cm. 16,5x33,3



17782 Pienza
cm. 16,5x16,5



17762 Pienza
cm. 33,3x33,3



PORCELLANATO



Tarquinia

UNI EN 176 BI GL - SPESSORE MAGGIORATO MM.10



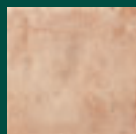
17800 Fascia Incisa Tarquinia
cm. 16,5x33,3



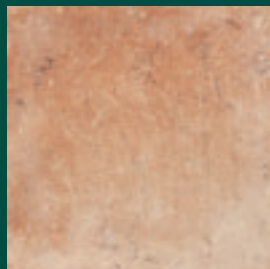
17804
Ang. Inciso Tarquinia
cm. 16,5x16,5



18151 Tarquinia
cm. 16,5x33,3



17794 Tarquinia
cm. 16,5x16,5



17290 Tarquinia
cm. 33,3x33,3



PORCELLANATO



Inserti decorativi

SPESORE MAGGIORATO MM.10



18014 Fascia Cuma
cm. 12,5x33,3



18370 Fascia Sutri (Tus/Vei)
cm. 16,5x33,3



18373 Ang. Sutri (Tus/Vei)
cm. 16,5x16,5



18372 Fascia Nepi (Tar/Pie)
cm. 16,5x33,3



18375 Ang. Nepi (Tar/Pie)
cm. 16,5x16,5



18371 Fascia Sileno (Tus)
cm. 16,5x33,3



18374 Ang. Sileno (Tus)
cm. 16,5x16,5



18015 Rosone Ardea
cm. 66,6x66,6



PORCELLANATO



GRES FINE PORCELLANATO
MONOCIBEC
PAVIMENTI AD ALTA RESISTENZA

COTTO ETRUSCO



Pezzi di corredo

UNI EN 176 BI GL

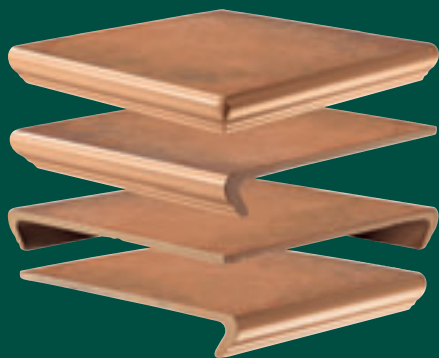
**GRADONE, ANGOLARE E BATTISCOPA
DISPONIBILI IN TUTTI I COLORI**

**PIECES SPECIALES DISPONIBLES
DANS TOUT LES COULEURS**

**DIE SPEZIELLE TEILE
SIND IN ALLEN FARBEN LIEFERBAR**

**ACCESSORY PIECES
AVAILABLE IN ALL COLOURS**

Angolare Plus
cm. 33,3x33,3
(spessore mm. 45)



Gradone Plus cm. 30x33,3
(spessore mm. 38)



Battiscopa
dx/sx
cm. 8x33,3

Battiscopa
cm. 8x33,3

PAVIMENTI *HISTORIA* MONOCIBEC - GRES FINE PORCELLANATO

Qualità chimico-fisiche e meccaniche secondo valori prescritti da norme ufficiali

CARATTERISTICHE TECNICHE	TIPO DI PROVA
Dimensioni	EN 98
Absorbimento d'acqua	EN 99
Resistenza a flessione	EN 100
Resistenza agli sbalzi termici	EN 104
Resistenza al gelo	EN 202
Coefficiente di dilatazione	EN 103
Resistenza agli acidi (escluso HF e derivati)	EN 122
Resistenza dei colori alla luce	GARANTITA
Resistenza alle macchie	EN 122

MONOCIBEC FUBBÖDEN - *HISTORIA* - FEISTEINZEUG

Chemisch-physikalische und mechanische Eigenschaften gemäß von offiziellen Normen vorgeschriebenen Werten

TECHNISCHE DATEN	TESTNORM
Abmessungen	EN 98
Wasseraufnahme	EN 99
Biegefestigkeit	EN 100
Temperaturwechselbeständigkeit	EN 104
Frostbeständigkeit	EN 202
Wärmeausdehnungskoeffizient	EN 103
Säurefestigkeit (HF und deren Verbindungen ausgenommen)	EN 122
Lichtechtheit der Farben	GARANTIERT
Fleckenbeständigkeit	EN 122

CARRELAGES DE SOL *HISTORIA* MONOCIBEC - GRES CERAME FIN

Qualités chimiophysiques et mécaniques conformes aux valeurs prescrites par les normes officielles

CARACTERISTIQUES TECHNIQUES	CONFORME AUX NORMES
Dimensions	EN 98
Absorption d'eau	EN 99
Résistance à la flexion	EN 100
Résistance aux chocs thermiques	EN 104
Résistance au gel	EN 202
Coefficient de dilatation thermique	EN 103
Résistance aux acides (sauf HF et dérivés)	EN 122
Résistance de la couleur à la lumière	GARANTIE
Résistance aux taches	EN 122

MONOCIBEC *HISTORIA* FLOOR TILES - FINE PORCELAIN STONEWARE

Chemical-physical and mechanical properties according to values prescribed by official standards.

TECHNICAL DATA	TESTED ACCORDING TO STANDARDS
Dimensions	EN 98
Water absorption	EN 99
Breaking strength	EN 100
Thermal shock resistance	EN 104
Frost resistance	EN 202
Thermal expansion coefficient	EN 103
Resistance to acids (excluding HF and its compounds)	EN 122
Light stability	GARANTEED
Stain resistance	EN 122



PORCELLANATO



GRES FINE PORCELLANATO
MONOCIBEC
PAVIMENTI AD ALTA RESISTENZA

COTTO ETRUSCO



INDUSTRIE GRES PORCELLANATO

MONOCIBEC

PAVIMENTI AD ALTA RESISTENZA



FINCIBEC spa

Via Valle D'Aosta, 47
41049 Sassuolo (MO) Italy

Tel +39 0536.861.300
Fax Italia 0536.861.400
Fax Foreign Customers
+39 0536.861.450 / 806.974

www.monocibec.it
monocibec@monocibec.it