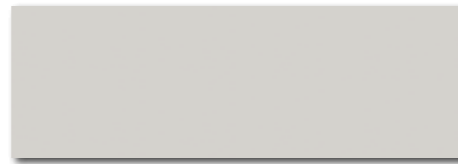


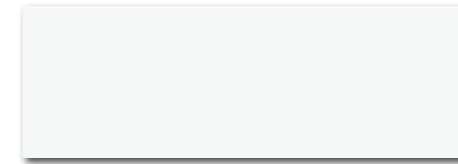


20x60



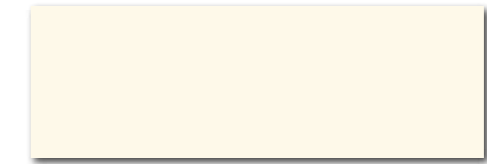
**WAAVE012**  
Concept Plus  
80 / m<sup>2</sup>  
lesk | glossy  
světle šedá / light grey  
jasnoszara / светло-серый / világosszürke / gris claro

**WAAVE112**  
Concept  
80 / m<sup>2</sup>  
mat | matt



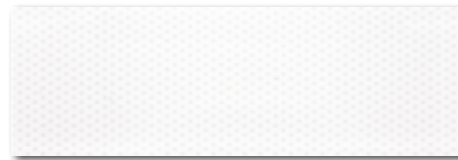
**WAAVE000**  
Concept Plus  
78 / m<sup>2</sup>  
lesk | glossy

**WAAVE104**  
Concept  
78 / m<sup>2</sup>  
mat | matt

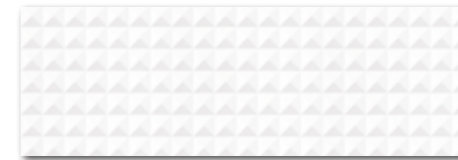


**WAAVE007**  
Concept Plus  
80 / m<sup>2</sup>  
lesk | glossy  
světle béžová / light beige / jasno-bežowa  
světlo-beževý / világosbézs / beige claro

**WAAVE107**  
Concept  
80 / m<sup>2</sup>  
mat | matt



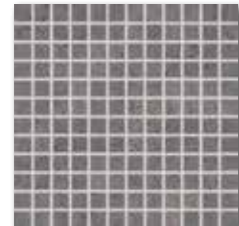
**WITVE002**  
80 / ks  
mat/lesk | matt/glossy



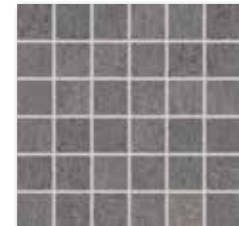
**WADVE001**  
86 / m<sup>2</sup>  
lesk | glossy | ✨  
bílá / white / biata / белый / fehér / blanco



**WITVE001**  
80 / ks  
mat/lesk | matt/glossy



**DDM0U611** (SET)  
Unistone  
PEI 5 82 / set  
mat | matt | V2

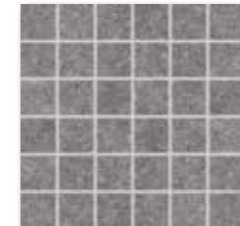


**DDM06611** (SET)  
Unistone  
PEI 5 72 / set  
mat | matt | V2



**DDM0U001** (SET)  
Trend  
PEI 4 82 / set  
mat | matt | V4

vícebarevná / multicoloured / kolorowa  
многочетный / többszínű / multicolor



**DDM06636** (SET)  
Rock  
PEI 5 72 / set  
mat | matt | V2



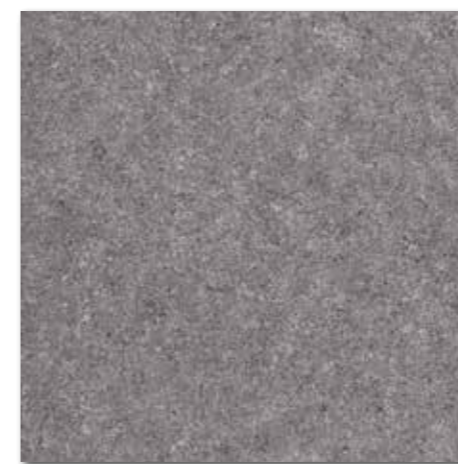
**DDV1V619** (SET)  
Wood  
PEI 4 72 / set  
mat | matt | V2



**DAK63611**  
Unistone  
PEI 5 86 / m<sup>2</sup>  
mat | matt | R9  
šedá / grey / szara / серый / szürke / gris



**DAK63656**  
Trend  
PEI 4 82 / m<sup>2</sup>  
mat | matt | R9 | A  
béžovo-šedá / beige-grey / bežowo-szary  
бежевый-серый / bézs-szürke / beige-gris



**DAK63636**  
Rock  
PEI 5 82 / m<sup>2</sup>  
mat | matt | R10 | A  
tmavě šedá / dark grey / ciemnoszara  
темно-серый / sötétszürke / gris oscuro



výrobek / product	cm	mm	EN	ks/m <sup>2</sup>	m <sup>2</sup>	kg	kg/m <sup>2</sup>	brutto kg
obkládačka / wall tile	20x60	198x598x10	EN 14411:2012, annex K BIII GL	9	8,3	1,08	42	45,36
inzerťo / insert (WITVE...)	20x60	198x598x10	EN 14411:2012, annex K BIII GL	4	8,3	0,48	-	8,9
mozaika set 30x30 cm / mosaic sheet 30x30 cm	2,5x2,5	23x23x10	STO č. 030 - 049913	3	11	0,27	-	5,8
mozaika set 30x30 cm / mosaic sheet 30x30 cm	5x5	48x48x10	STO č. 030 - 049913	3	11	0,27	-	5,8
inzerťo / insert	30x30	298x298x10	STO č. 030 - 049913	3	11	0,27	-	5,8
dlaždice / floor tile	60x60	598x598x10	EN 14411:2012, annex G BIIa GL	3	2,8	1,08	32	34,56
dlaždice / floor tile	15x60	148x598x10	EN 14411:2012, annex G BIIa GL	10	11,1	0,90	48	43,20