

WATMB080
○ 68 / m²
lesk | glossy



WLAMG080
○ 42 / ks
mat/lesk | matt/glossy



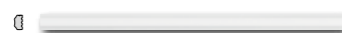
WADMB080
○ 78 / m²
lesk | glossy | 🐦



WITMB080
○ 64 / ks
mat/lesk | matt/glossy



WLAMH080
○ 52 / ks
mat/lesk | matt/glossy



WLRMG080
○ 54 / ks
mat | matt



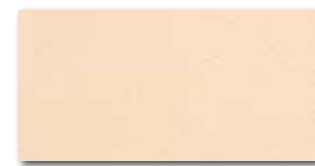
WATMB082
○ 68 / m²
lesk | glossy



WLAMG082
○ 42 / ks
mat/lesk | matt/glossy



WLRMG082
○ 54 / ks
mat | matt



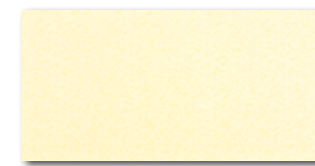
WATMB081
○ 68 / m²
lesk | glossy



WLAMG081
○ 42 / ks
mat/lesk | matt/glossy



WLRMG081
○ 54 / ks
mat | matt



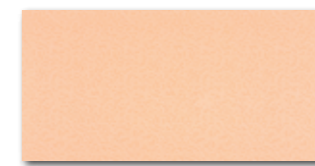
WATMB084
○ 68 / m²
lesk | glossy



WLAMG084
○ 42 / ks
mat/lesk | matt/glossy



WLRMG084
○ 54 / ks
mat | matt



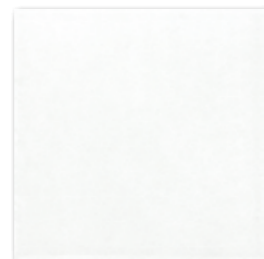
WATMB083
○ 68 / m²
lesk | glossy



WLAMG083
○ 42 / ks
mat/lesk | matt/glossy



WLRMG083
○ 54 / ks
mat | matt



DAA3B180
PEI 5 ○ 74 / m²
mat/lesk | matt/glossy

bílá / white / biata / белый / fehér / blanco



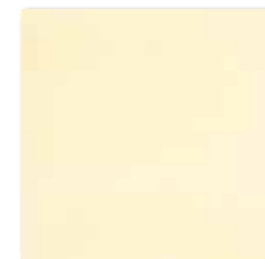
DAA3B182
PEI 4 ○ 74 / m²
mat/lesk | matt/glossy

fialová / violet / fioletova / сиреневый
lila / púrpura



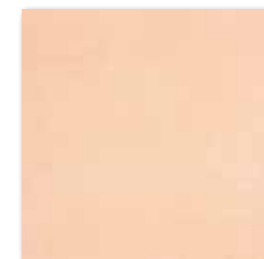
DAA3B181
PEI 4 ○ 74 / m²
mat/lesk | matt/glossy

běžová / beige / bežowa / бежевый
bézs / beige



DAA3B184
PEI 4 ○ 74 / m²
mat/lesk | matt/glossy

žlutá / yellow / zółta / желтый
sárga / árbar



DAA3B183
PEI 4 ○ 74 / m²
mat/lesk | matt/glossy

oranžová / orange / pomarańczowa
оранжевый / narancs / naranja



20x40



v2

40x2,5

20x40

40x6

40x2



33x33



R9



v2

výrobek / product



EN



ks/m²



m²



m²



kg

kg/m²



brutto kg

výrobek / product	L mm	W mm	EN	ks/m ²	m ²	kg	m ²	kg	kg/m ²	brutto kg	
obkládačka / wall tile	20x40	198x398x7	EN 14411:2012, annex K BIII GL	20	12,5	1,60	48	76,80	20,6	12,9	1 016
inzerťo / insert (WITMB...)	20x40	198x398x7	EN 14411:2012, annex K BIII GL	4	12,5	0,32	-	-	4,1	12,9	-
listela / listel	40x6	398x60x7	EN 14411:2012, annex K BIII GL	6	41,7	0,14	-	-	1,9	13,6	-
listela / listel	40x2,5	398x25x7	EN 14411:2012, annex K BIII GL	6	125	0,05	-	-	0,8	16,0	-
listela / listel	40x2	398x20	EN 14411:2012, annex K BIII GL	16	100	0,16	-	-	2,0	12,5	-
dlaždice / floor tile	33x33	333x333x8	EN 14411:2012, annex G BIIa GL	12	9	1,33	44	58,52	23,6	17,7	1 061