

# CORNER UP

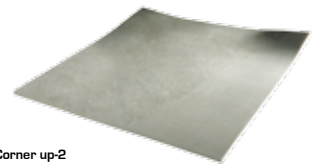


Corner up-1

**11 mm**

**Corner up 60x60** **G-1732**  
(23.45" x 23.45" - 59,55 x 59,55 cm.)

**Corner up 90x90** **G-1870**  
(35.22" x 35.22" - 89,46 x 89,46 cm.)



Corner up-2



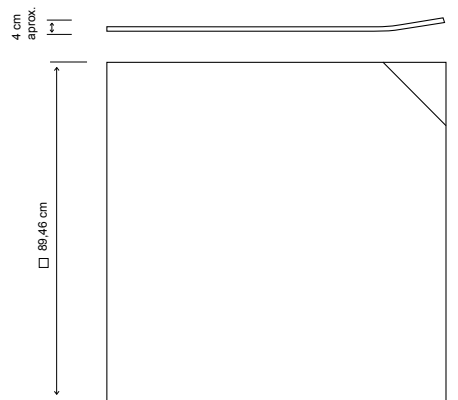
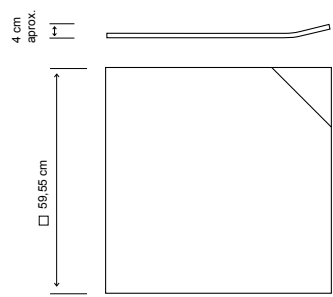
Corner up-2 opposite



Corner up-3



Corner up-4



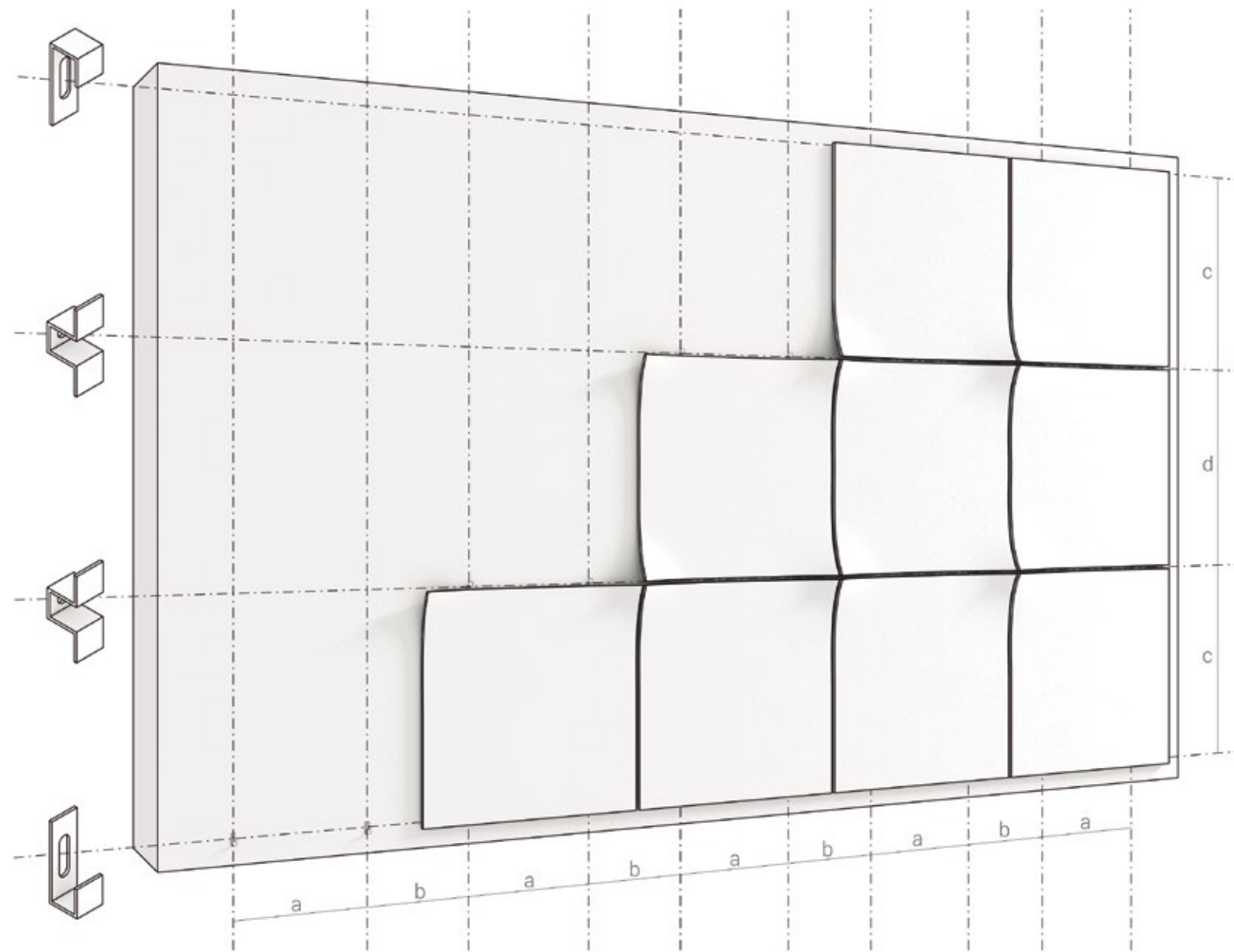
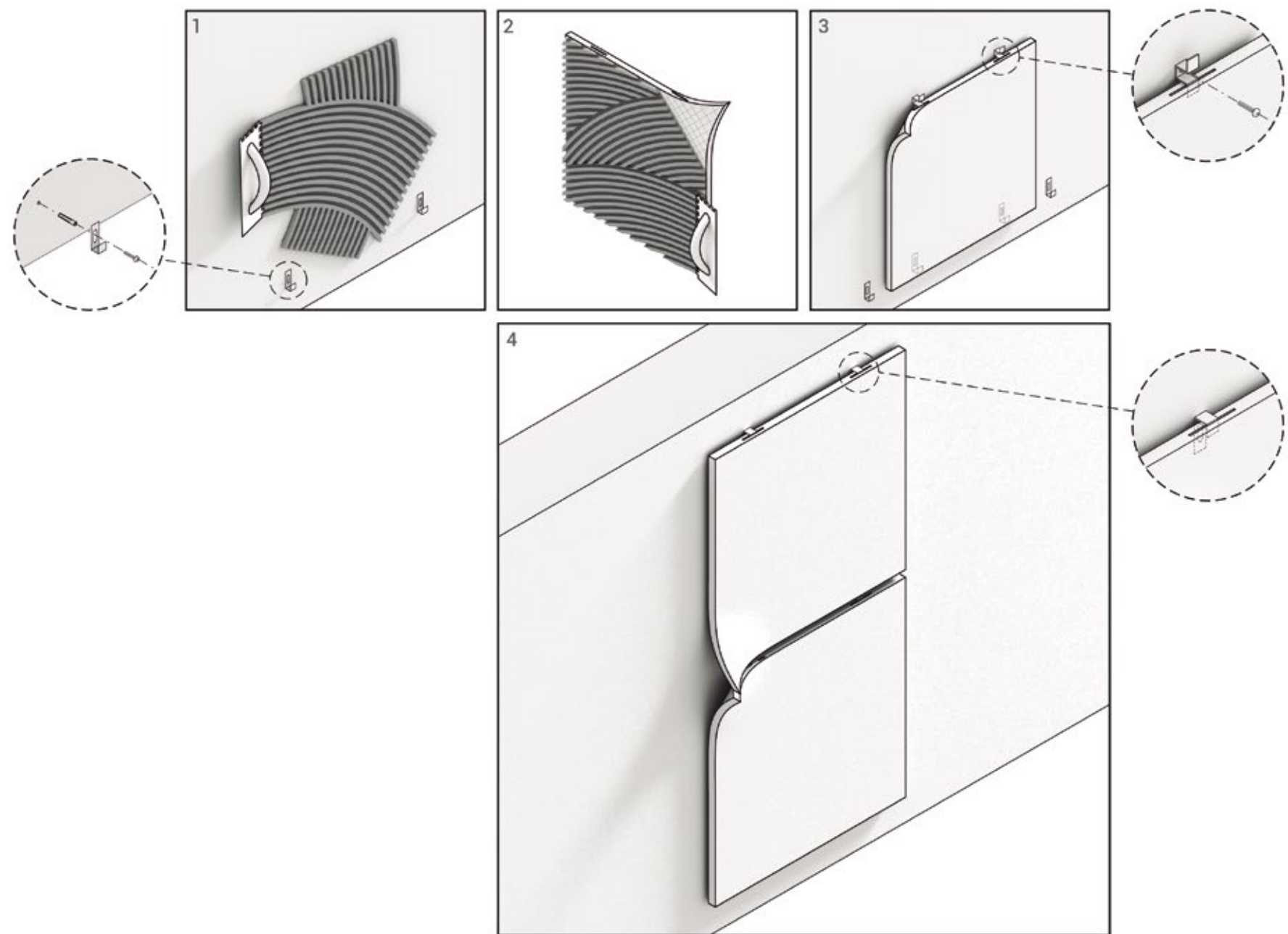
\*THIS IS A NATURAL PRODUCT MADE THROUGH A HANDMADE PROCESS. THEREFORE, ITS POSSIBLE SHADE, FINISH OR SIZE VARIATIONS MUST BE CONSIDERED AS TYPICAL FEATURES OF THE MATERIAL AND THEY WILL NOT BE ADMITTED IN A CLAIM.  
\*ESTE ES UN PRODUCTO NATURAL FABRICADO ARTESANALMENTE, POR LO QUE POSIBLES VARIACIONES DE TONO, ACABADO O DIMENSION DEBEN CONSIDERARSE PROPIAS DEL MATERIAL Y NO SERÁ OBJETO DE RECLAMACIÓN.

\* FOR ARCH CONCEPT WE RECOMMEND 3 MM JOINT. PARA ARCH CONCEPT SE RECOMIENDA UNA JUNTA DE COLOCACIÓN DE 3 MM.  
\* WE RECOMMEND USING MECHANICAL ANCHORING FOR INSTALLATION. SEE PAGE 40. PARA LA COLOCACIÓN DE ESTAS PIEZAS SE RECOMIENDA EL USO DE ANCLAJES MECÁNICOS. VER PAGINA 40.



product: evolution black striato 60x60 corner up PRIVATE HOUSE - Roma (ITALY) - architects: LABORATORIO ARCHITETTURA DOMENICO PISCITELLI

**CORNER UP**



- 1 - Adhesive on the bonding surface (the surface must be clean and levelled ) using type C2 tile adhesive . After, we place the first clips, type Z-1 ENDING.  
Encolar sobre la superficie de pegado (esta superficie debe estar limpia y nivelada) con el uso de adhesivo cementoso tipo C2. Posteriormente se colocarán las primeras grapas de tipo Z-1 ENDING.
- 2 - Adhesive on the piece to be placed. / Encolado sobre la pieza a colocar.
- 3 - Placing the piece, inserting the clip into the grooved of the piece. / Colocación de la pieza, insertando la grapa en el interior del ranurado de la pieza.
- 4 - Put all the pieces of the wall to end with a clip type Z-1 ENDING. Colocar todos las piezas del mural para terminar con una grapa tipo Z-1 ENDING.