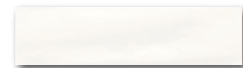






WARV4560
○ 80 / m²
mat | matt



DARJ9560
○ 92 / m²
lesk | glossy
bílá / white / biata / белый / blanco



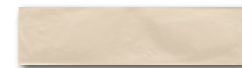
DAK63430
Base
PEI 5 ○ 86 / m²
mat | matt
slonová kost / ivory / kość stoniowa
слоновая кость / marfil



DARSU715
Faro
PEI 5 ○ 84 / m²
mat | matt
běžovo-šedá / beige-grey / beżowo-szary
бежевый-серый / beige-gris



WARV4561
○ 80 / m²
mat | matt



DARJ9561
○ 92 / m²
lesk | glossy



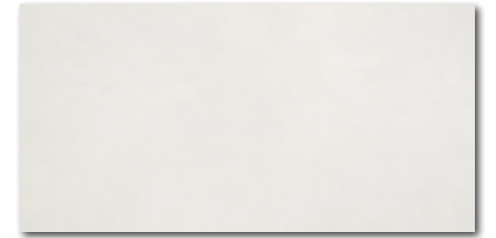
DAK63431
Base
PEI 5 ○ 86 / m²
mat | matt
světle béžová / light beige / jasnobeżowa
светло-бежевый / beige claro



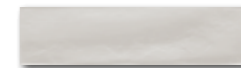
DARSU718
Faro
PEI 4 ○ 84 / m²
mat | matt
hnědá / brown / brązowa / коричневый / marrón



DARSU716
Faro
PEI 4 ○ 84 / m²
mat | matt
běžová / beige / beżowa / бежевый / beige



WARV4562
○ 80 / m²
mat | matt



DARJ9562
○ 92 / m²
lesk | glossy



DAK63432
Base
PEI 5 ○ 86 / m²
mat | matt
světle šedá / light grey / jasnoszara
светло-серый / gris claro



DARSU719
Faro
PEI 5 ○ 84 / m²
mat | matt
šedo-bílá / grey-white / szaro-biała
серый и белый / blanco-gris



výrobek / product	cm	mm	EN	ks/m ²	m ²	kg/m ²	brutto kg
obkládačka / wall tile	30x60	298x598x10	EN 14411:2016, annex L BIII GL	6	5,56	1,08	40
inzerťo / decór	30x7,5	298x75x10	EN 14411:2016, annex G BIIa GL	20	44,4	0,45	72
dlaždice / floor tile	60x60	598x598x10	EN 14411:2016, annex G BIIa GL	3	2,8	1,08	32
dlaždice / floor tile	15x60	148x598x10	EN 14411:2016, annex G BIIa GL	10	11,1	0,90	48