



Grecale

134/135

Breezy charm

La trama granulosa della pietra caratterizza Grecale: il vento fresco del Mediterraneo che soffia da nord-est, artefice di sedimentazioni ed erosioni millenarie, diventa l'ispirazione per una texture mossa da puntature chiaro-scure, che si amalgamano creando superfici dall'impatto cromatico omogeneo. Adatta per ambienti moderni e minimal, la collezione è disponibile in molti formati rettangolari o quadrati anche con finitura lappata e soft. Le sei nuance naturali (Ghiaccio - bianco, Acciaio - grigio chiaro, Grafite - grigio scuro, Fango, Sabbia e Crema) si abbinano ai due decori: Hologram prevede incisioni laser che compongono un leggero disegno, più o meno percettibile a seconda dell'inclinazione con cui si guarda la superficie, mentre Kite presenta un pattern geometrico molto sottile ma definito. Completano la serie il mosaico Penta, dalla forma irregolare, e il muretto 3D che alterna diverse altezze, parti lucide e altre strutturate.

Grecale is distinguished by a fine texture of stone. The cool wind of the Mediterranean that blows from the northeast, cause of sedimentation and erosion over the course of millennia, is the inspiration for a texture dotted by light and dark spots that blend together creating surfaces with a uniform colour. Suitable for modern and minimalist environments, the collection is available in many rectangular or square sizes with honed and soft finishes. The six natural shades (Ghiaccio - ice, Acciaio - steel, Grafite - graphite, Fango - graybrown, Sabbia - sand and Crema - beige) combine with the two decorations: Hologram features laser engravings that produce a light design, more or less perceptible depending on the inclination of the surface, while Kite has a very subtle but defined geometric pattern. The series is completed by the Penta mosaic with its irregular shapes, and the 3D wall tile that alternates different heights and has shiny and textured parts.

La trame fine de la pierre caractérise Grecale : le vent frais de nord-est qui souffle sur la Méditerranée, responsable de la sédimentation et de l'érosion millénaire, inspire la texture mouvementée d'un revêtement riche en clairs-obscur en offrant des surfaces à l'impact chromatique très homogène. Adaptée pour des espaces modernes et minimalistes, la collection est disponible dans plusieurs formats carrés ou rectangulaires, à finition soft et polie. Les six tonalités naturelles (Ghiaccio - blanc, Acciaio - gris clair, Grafite - gris foncé, Fango - argile, Sabbia - sable et Crema - beige) sont associées à deux décors : Hologram, avec des gravures au laser qui créent un dessin délicat, plus ou moins perceptible selon l'inclinaison visuelle de la surface, et Kite qui présente un motif géométrique ultra fin mais bien défini. La série est complétée par le mosaïque Penta, de forme irrégulière, et le muret 3D qui alterne différentes hauteurs, des parties brillantes et d'autres structurées.

Grecale ist wie ein Naturstein fein strukturiert: der kühle, von Nordosten wehende Mittelmeerwind formt im Laufe der Jahrtausende Ablagerungen und Erosionen und wird zur Inspirationsquelle für eine besondere Textur, in der sich helle und dunkle Stellen vermischen und farblich gleichmäßig wirkende Oberflächen erzeugen. Die für ein modernes und minimalistisches Ambiente ideale Kollektion ist in vielen rechteckigen oder quadratischen Formaten erhältlich, auch in den Oberflächenversionen geläpft und soft. Die sechs natürlichen Nuancen (Ghiaccio - Hell, Acciaio - Lichtgrau, Grafite - Dunkelgrau, Fango - Schlamm, Sabbia - Sand und Crema - Beige) können mit zwei Dekoren kombiniert werden: Hologram ist durch Lasergravuren leicht und je nach der Neigung, aus der die Oberfläche betrachtet wird, mehr oder weniger deutlich wahrnehmbar gezeichnet, während Kite ein sehr feines, aber klar definiertes geometrisches Muster aufweist. Komplettiert wird die Serie durch das unregelmäßig geformte Mosaik Penta und durch Muretto 3D, in dem sich unterschiedliche Höhen, glänzende und strukturierte Teile abwechseln.

Grecale wordt gekenmerkt door de fijne structuur van steen: de koele wind van de Middellandse Zee, die vanuit het noordoosten blaast en de schepper is van sedimentatie en duizendjarige erosie, wordt de inspiratie voor een textuur met donkere en lichte punten die zich mengen en oppervlakken met een gelijkmatige kleur creëren. De collectie die geschikt is voor moderne en minimalistische ruimtes is verkrijgbaar in veel rechthoekige of vierkante formaten, ook met zijdeglans afwerking en softafwerking. De zes natuurlijke kleuren (Ghiaccio - wit, Acciaio - lichtgrijs, Grafite - donkergrijs, Fango - modder, Sabbia - sand en Crema - beige) combineren mooi met de twee decoratietegels: Hologram heeft lasergravures die een licht motief vormen, dat afhankelijk van het punt vanwaar het oppervlak wordt bekeken goed of minder goed zichtbaar is, terwijl Kite een heel subtiel maar duidelijk geometrisch patroon heeft. Het mozaïek Penta maakt de serie af. Het heeft een onregelmatige vorm en de 3D muretto tegels (tegelstroken), wisselen verschillende hoogtes, glanzende delen en andere, gestructureerde tegels met elkaar af.

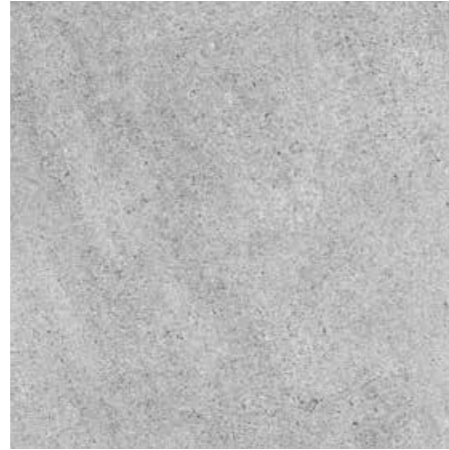
La trama fina de la piedra caracteriza Grecale: el viento fresco del Mediterráneo que sopla desde noroeste, artífice de sedimentaciones y erosiones milenarias se convierte en la inspiración de una textura movida por punteados claros-oscuros que al mezclarse crean superficies de impacto cromático homogéneo. Ideal para ambientes modernos y minimalistas, la colección está disponible en muchos formatos rectangulares o cuadrados también con acabado semipulido y soft. Los seis matices naturales (Ghiaccio - hielo, Acciaio - acero, Grafite - grafito, Fango - fango, Sabbia - arena y Crema - beige) se combinan con las dos decoraciones: Hologram prevé incisiones láser que componen un diseño suave, que a duras penas se percibe dependiendo de la inclinación con la que se mire la superficie, en cambio Kite presenta un pattern geométrico muy suave pero definido. Completan la serie el mosaico Penta, de forma irregular, y el muretto 3D que alterna diferentes alturas, partes brillantes y otras abujardadas.

± 9,5 mm

75x150/30"x60" R
 75x150/30"x60" Soft R
 75x150/30"x60" Lapp R
 75x75/30"x30" R
 75x75/30"x30" Soft R
 75x75/30"x30" Lapp R
 60x60/24"x24" R
 60x60/24"x24" Soft R
 30x60/12"x24" R
 30x60/12"x24" Soft R



V2
Slight



Ghiaccio 75x150/30"x60" R
75x150/30"x60" Soft R
75x150/30"x60" Lapp R
75x75/30"x30" R
75x75/30"x30" Soft R
75x75/30"x30" Lapp R
60x60/24"x24" R
60x60/24"x24" Soft R
30x60/12"x24" R
30x60/12"x24" Soft R

MN54
MN55
MP51
MQ05
MQ11
MP65
MQ71
MQ76
MQ82
MQ87

Acciaio 75x150/30"x60" R
75x150/30"x60" Soft R
75x150/30"x60" Lapp R
75x75/30"x30" R
75x75/30"x30" Soft R
75x75/30"x30" Lapp R
60x60/24"x24" R
60x60/24"x24" Soft R
30x60/12"x24" R
30x60/12"x24" Soft R

MN52
MN53
MP49
MQ04
MQ09
MP63
MQ70
MQ75
MQ81
MQ86

Grafite 75x150/30"x60" R
75x150/30"x60" Soft R
75x150/30"x60" Lapp R
75x75/30"x30" R
75x75/30"x30" Soft R
75x75/30"x30" Lapp R
60x60/24"x24" R
60x60/24"x24" Soft R
30x60/12"x24" R
30x60/12"x24" Soft R

MN57
MN58
MP52
MQ06
MQ10
MP66
MQ72
MQ77
MQ83
MQ88



Sabbia 75x150/30"x60" R
75x150/30"x60" Soft R
75x150/30"x60" Lapp R
75x75/30"x30" R
75x75/30"x30" Soft R
75x75/30"x30" Lapp R
60x60/24"x24" R
60x60/24"x24" Soft R
30x60/12"x24" R
30x60/12"x24" Soft R

MN61
MN62
MP53
MQ08
MQ13
MP67
MQ73
MQ79
MQ85
MQ90

Crema 75x150/30"x60" R
75x150/30"x60" Soft R
75x150/30"x60" Lapp R
75x75/30"x30" R
75x75/30"x30" Soft R
75x75/30"x30" Lapp R
60x60/24"x24" R
60x60/24"x24" Soft R
30x60/12"x24" R
30x60/12"x24" Soft R

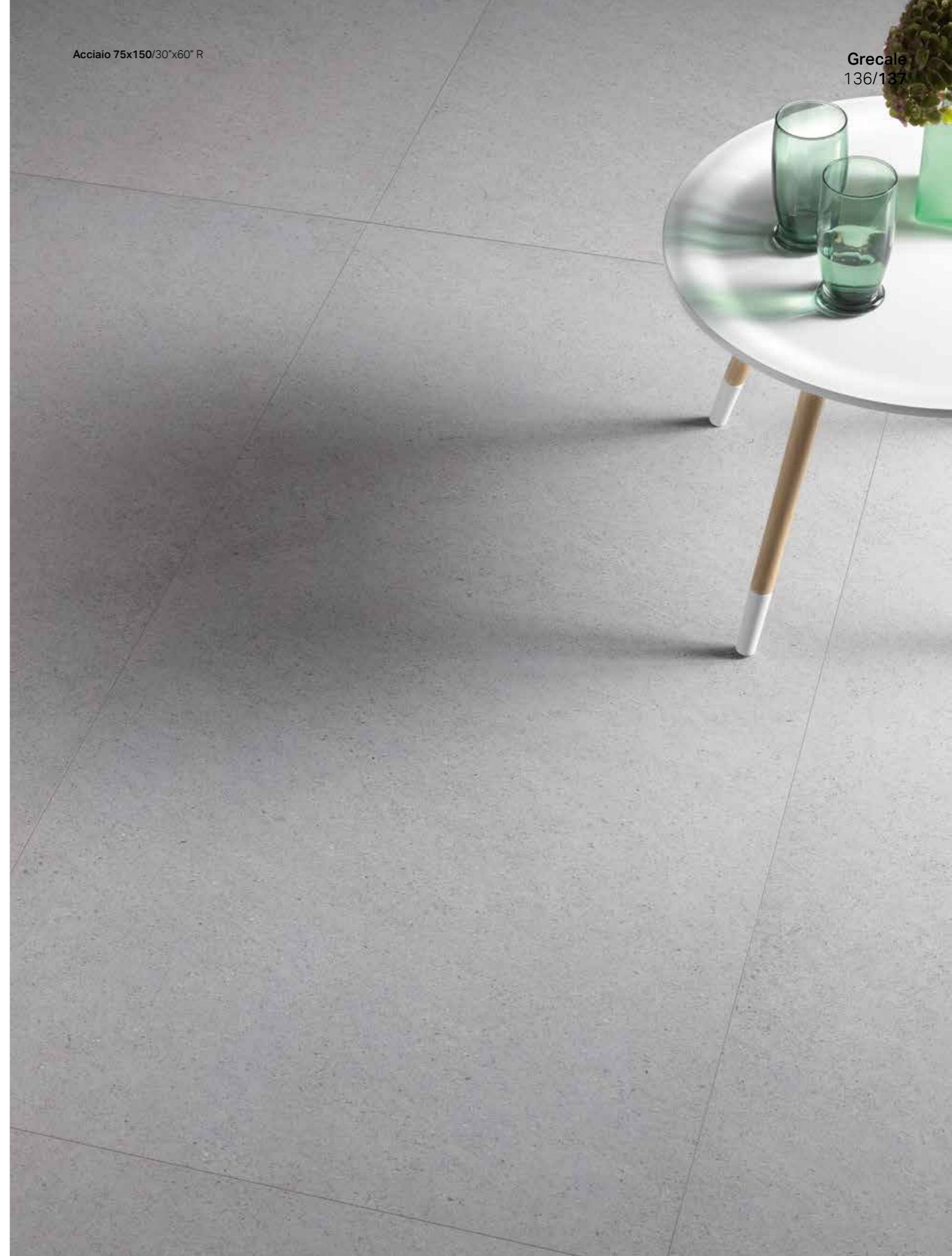
MU34
MU43
MU25
MU44
MU45
MU26
MU46
MU47
MU48
MU49

Fango 75x150/30"x60" R
75x150/30"x60" Soft R
75x150/30"x60" Lapp R
75x75/30"x30" R
75x75/30"x30" Soft R
75x75/30"x30" Lapp R
60x60/24"x24" R
60x60/24"x24" Soft R
30x60/12"x24" R
30x60/12"x24" Soft R

MN59
MN60
MP50
MQ07
MQ12
MP64
MQ74
MQ78
MQ84
MQ89

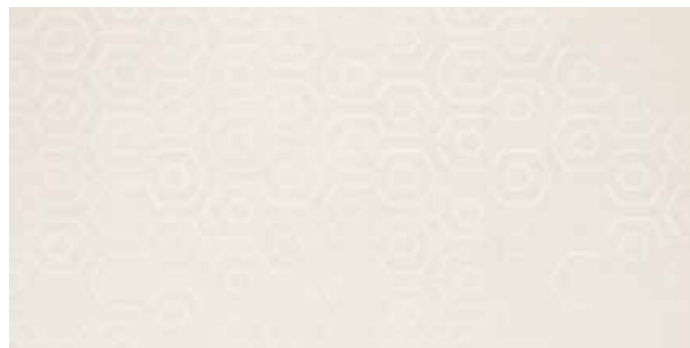
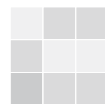
Acciaio 75x150/30"x60" R

Greciale
136/137

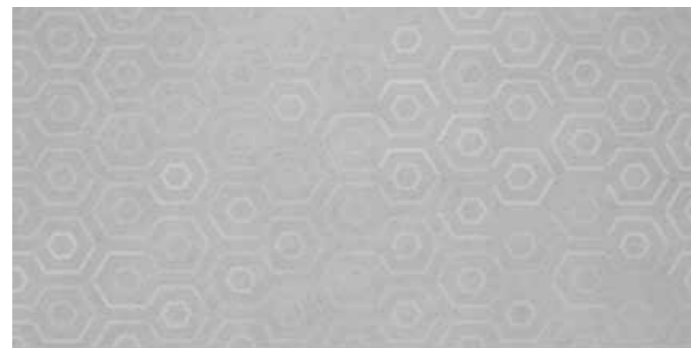




V2
Slight



Hologram Ghiaccio 75x150/30"x60" R MQ92



Hologram Acciaio 75x150/30"x60" R MQ91



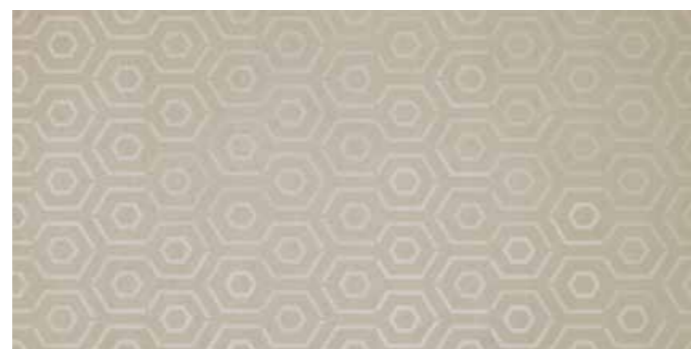
Hologram Grafite 75x150/30"x60" R MQ93



Hologram Sabbia 75x150/30"x60" R MQ95



Hologram Crema 75x150/30"x60" R MU27



Hologram Fango 75x150/30"x60" R MQ94

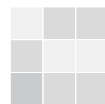
2 soggetti diversi formato 75x150 (miscelazione casuale)/
2 assorted motifs 75x150 size (random mix)/
2 sujets differents format 75x150 (melange aleatoire)/
2 verschiedene Motive Format 75x150 (Zufallsmischung)/
2 verschillende ontwerpen in 75x150 (willekeurig gemengd)/
2 motivos diferentes formato 75x150 (mezcla aleatoria)

Acciaio 75x150/30"x60" R — Hologram Acciaio 75x150/30"x60" R





V2
Slight



Kite Ghiaccio 75x150/30"x60" R MQ97



Kite Acciaio 75x150/30"x60" R MQ96



Kite Grafite 75x150/30"x60" R MQ98



Kite Sabbia 75x150/30"x60" R MR00



Kite Crema 75x150/30"x60" R MU56



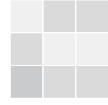
Kite Fango 75x150/30"x60" R MQ99

Acciaio 75x75/30"x30" R — Kite Acciaio 75x150/30"x60" R

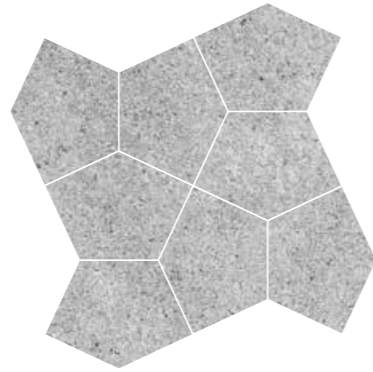




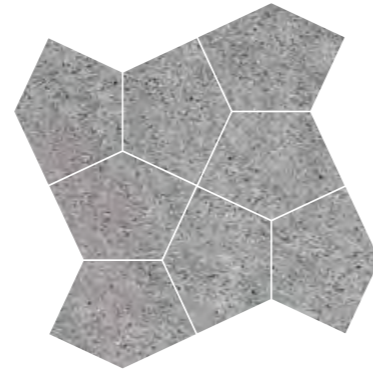
V2
Slight



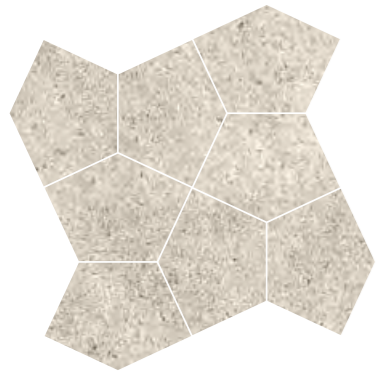
Ghiaccio 31,5x31,5/12^{3/8}"x12^{3/8}" Soft R **MP42**
Mosaico Penta Soft



Acciaio 31,5x31,5/12^{3/8}"x12^{3/8}" Soft R **MP40**
Mosaico Penta Soft



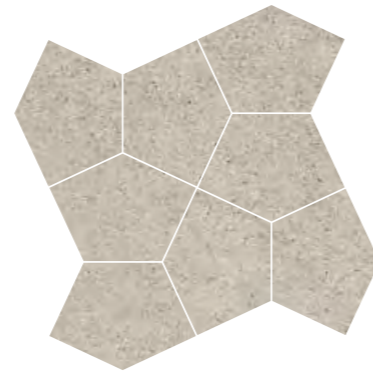
Grafite 31,5x31,5/12^{3/8}"x12^{3/8}" Soft R **MP43**
Mosaico Penta Soft



Sabbia 31,5x31,5/12^{3/8}"x12^{3/8}" Soft R **MP44**
Mosaico Penta Soft



Crema 31,5x31,5/12^{3/8}"x12^{3/8}" Soft R **MU29**
Mosaico Penta Soft



Fango 31,5x31,5/12^{3/8}"x12^{3/8}" Soft R **MP41**
Mosaico Penta Soft



Ghiaccio 31,5x45/12^{3/8}"x18" R **MP84**
Muretto 3D



Acciaio 31,5x45/12^{3/8}"x18" R **MP83**
Muretto 3D



Grafite 31,5x45/12^{3/8}"x18" R **MP85**
Muretto 3D



Sabbia 31,5x45/12^{3/8}"x18" R **MP87**
Muretto 3D

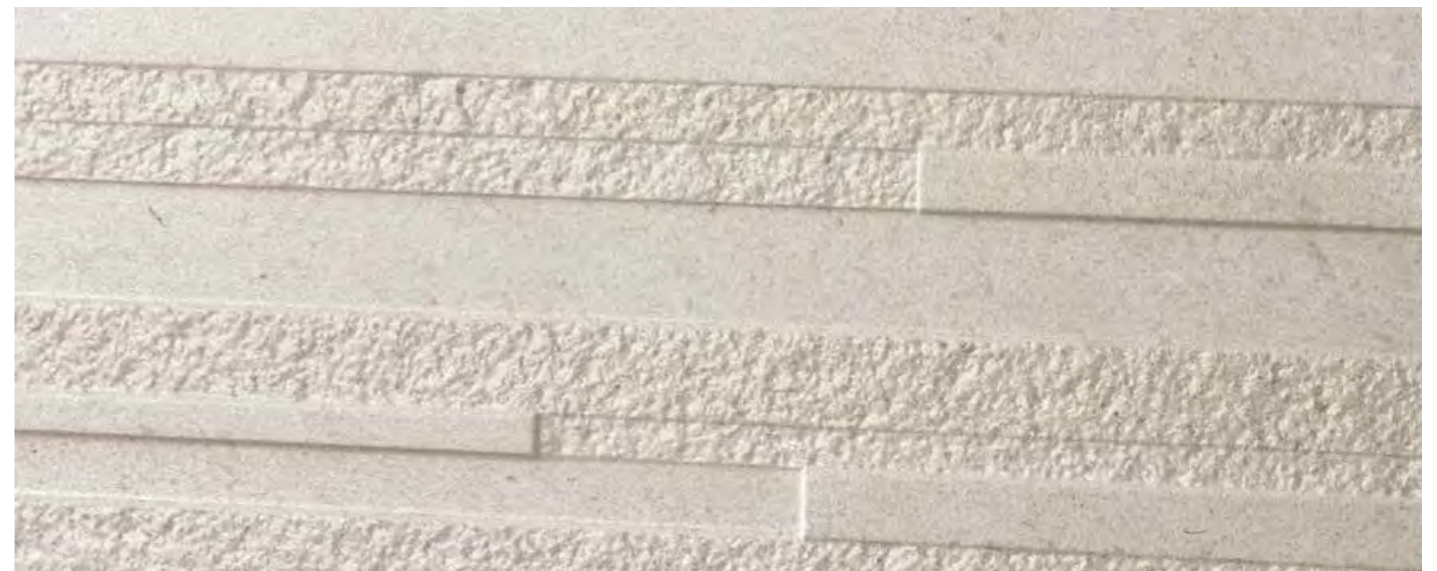


Crema 31,5x45/12^{3/8}"x18" R **MU28**
Muretto 3D



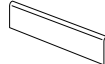
Fango 31,5x45/12^{3/8}"x18" R **MP86**
Muretto 3D

Ghiaccio Muretto 3D 31,5x45/12^{3/8}"x18" R



Pezzi speciali/Trim tiles/Pieces speciales/Formteile/Speciale delen/Piezas especiales







Battiscopa	7x75/2 ^{7/8} "x30" R	7x60/2 ^{7/8} "x24" R
	Acciaio Crema Fango Ghiaccio Grafite Sabbia	MQ37 MU30 MQ40 MQ38 MQ39 MQ41
	Acciaio Crema Fango Ghiaccio Grafite Sabbia	MQ42 MU31 MQ45 MQ43 MQ44 MQ46

Imballi/Packing/Emballage/Verpackungseinheiten/Verpakking/Embalajes

	pcs x box	m ² / m x box	kg x box	box x pallet	m ² x pallet	kg x pallet
75x150/30"x60"	1	1,1250	24,50	25	28,13	612,50
75x75/30"x30"	2	1,1250	24,00	42	47,25	1008,00
60x60/24"x24"	3	1,0800	23,40	40	43,20	936,00
30x60/12"x24"	6	1,0800	23,40	40	43,20	936,00
31,5x45/12 ^{3/8} "x18" Muretto 3D	6	0,8505	21,00	52	44,23	1092,00
31,5x31,5/12 ^{3/8} "x12 ^{3/8} " Mosaico Penta	6	0,5954	13,00	42	25,01	546,00
7x75/2 ^{7/8} "x33" Battiscopa	10	7,5000	11,00	54	405,00	594,00
7x60/2 ^{7/8} "x24" Battiscopa	10	6,0000	9,00	70	420,00	630,00

Grecale MATT and SOFT finishes are recommended for interior floors, walls, and exterior walls in both residential and commercial applications.
Grecale is not recommended for exterior horizontal surfaces or exterior paving, and it is not recommended for ramps application.
Grecale SOFT finish is not recommended for interior floors in entrance areas if joined to outdoor in commercial applications.
Grecale LAPPATO is recommended for interior walls, and exterior walls in both residential and commercial applications.
Grecale LAPPATO finish is not recommended for floors.

Caratteristiche/Features/Caracteristiques/Eigenschaften/Eigenschappen/Características

			
UNI EN ISO 10545/14	DIN 51130	BC.R.A. Rep. CEC/81	ANSI A137.1-2012 (BOT3000)
Classe 5 / Class 5	R10	Asciutto > 0,40 / Bagnato > 0,40	> 0,42 Wet

I valori indicati nella tabella si riferiscono a superfici naturali (non Lappato e Soft)/The values in the table refer to natural (not Lappato - honed - and Soft) surfaces /Les valeurs du tableau se rapportent à des surfaces naturelle (non Lappato - adoucisé - et Soft)/Die in der Tabelle angeführten Werte beziehen sich auf naturbelassene (nicht Lappato - geläppte - und Soft) Oberflächen/ De waarden in de tabel hebben betrekking op natuurlijke oppervlakken (niet Lappato - zijdeglans - en Soft)/Los valores indicados en la tabla se refieren a las superficies naturales (no Lappato - semipulido - y Soft)

Sabbia 75x75/30"x30" R — Kite Sabbia 75x150/30"x60" R

