



Overlay

186/187

Concrete art

Dalla ricerca Refin nasce Overlay: l'osservazione di una particolare tecnica pittorica si declina sulla ceramica creando effetti sfumati generati da "pennellate" che si stratificano su base cemento. Una sovrapposizione virtuale che trasmette sensazioni fortemente materiche, definendo una collezione dal deciso protagonismo espressivo. Overlay conferisce agli spazi un mood urban, grafico e leggermente raw. Overlay è proposta in molti i formati, rettangolari e quadrati, sia con finitura lappata che soft.

Overlay is the result Refin research, the transfer of a particular painting technique to ceramics, creating shaded effects generated by "brush strokes" layered on a concrete base. A virtual overlay that conveys strong material sensations, defining a collection with a decisive and expressive character. Overlay gives spaces an urban, graphic and slightly raw mood. Overlay is available in many sizes, rectangular and square, also with honed and soft finishes.

Overlay, c'est le fruit de la recherche Refin: l'observation d'une technique spéciale de peinture se transforme en céramique, créant des effets nuancés, représentés par des coups de pinceau qui se stratifient sur le béton. Une superposition virtuelle à même de transmettre des sensations de matière, créant ainsi une collection où l'expression est la protagoniste. Overlay offre aux espaces un mood urbain, graphique et légèrement brut. Overlay inclut plusieurs formats, rectangulaires et carrés, aussi bien en finition polie que soft.

Aus der Refin-Forschung kommt Overlay: Eine besondere Maltechnik wird auf die Keramik übertragen. Durch sich schichtweise auf Zementbasis überlappende „Pinselstriche“ entstehen abgeschattierte Effekte. Eine virtuelle Überlappung, die stark stoffliche Empfindungen vermittelt und eine Kollektion von ausdrucksstarkem, markantem Charakter definiert. Overlay verleiht den Räumen eine urbane, grafische und ursprüngliche Atmosphäre. Overlay wird in zahlreichen, rechteckigen und quadratischen Formaten angeboten, auch in den Ausführungen geläpft und soft.

Overlay is ontstaan uit onderzoeken verricht door Refin: na waarneming van een bijzondere schildertechniek is die overgebracht op tegels, waardoor "wazige effecten" zijn ontstaan veroorzaakt door "penseelstreken", die lagen vormen op een cementbasis. Een virtuele overlapping die een sterk materische indruk wekt, geeft vorm aan een collectie met een sterk expressief karakter. Overlay geeft ruimtes een urban, grafische en lichtelijke raw mood. Overlay is verkrijgbaar in veel rechthoekige en vierkante formaten, ook met zijdeglans afwerking en softafwerkingen.

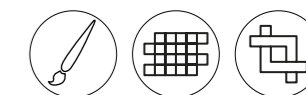
Gracias a la investigación de Refin nace Overlay: el estudio de una determinada técnica pictórica se propone en la cerámica creando efectos sombreados generados por "pinceladas" que se estratifican sobre base de cemento. Una superposición virtual que transmite fuertes sensaciones matéricas, definiendo una colección de marcado protagonismo expresivo. Overlay otorga a los espacios un "mood urban", gráfico y ligeramente "raw". Overlay se propone en muchos formatos, rectangulares, cuadrados, también en acabado semipulido y soft.

± 9 mm

120x240/48"x96" R

± 9,5 mm

75x150/30"x60" R
 75x150/30"x60" Soft R
 75x150/30"x60" Lapp R
 75x75/30"x30" R
 75x75/30"x30" Soft R
 75x75/30"x30" Lapp R
 45x90/18"x36" R
 45x90/18"x36" Soft R
 60x60/24"x24" R
 60x60/24"x24" Soft R
 30x60/12"x24" R
 30x60/12"x24" Soft R



V3 Moderate V4 Substantial *



Paper

75x150/30"x60" R	MN75
75x150/30"x60" Soft R	MN76
75x150/30"x60" Lapp R	MP60
75x75/30"x30" R	MQ16
75x75/30"x30" Soft R	MQ21
75x75/30"x30" Lapp R	MP74
45x90/18"x36" R	MR48
45x90/18"x36" Soft R	MR49
60x60/24"x24" R	MR40
60x60/24"x24" Soft R	MR41
30x60/12"x24" R	MR28
30x60/12"x24" Soft R	MR29

Dolphin

75x150/30"x60" R	MN71
75x150/30"x60" Soft R	MN72
75x150/30"x60" Lapp R	MP58
75x75/30"x30" R	MQ14
75x75/30"x30" Soft R	MQ19
75x75/30"x30" Lapp R	MP72
45x90/18"x36" R	MR45
45x90/18"x36" Soft R	MR44
60x60/24"x24" R	MR35
60x60/24"x24" Soft R	MR34
30x60/12"x24" R	MR25
30x60/12"x24" Soft R	MR24

Juta

75x150/30"x60" R	MN73
75x150/30"x60" Soft R	MN74
75x150/30"x60" Lapp R	MP59
75x75/30"x30" R	MQ15
75x75/30"x30" Soft R	MQ20
75x75/30"x30" Lapp R	MP73
45x90/18"x36" R	MR46
45x90/18"x36" Soft R	MR47
60x60/24"x24" R	MR36
60x60/24"x24" Soft R	MR37
30x60/12"x24" R	MR26
30x60/12"x24" Soft R	MR27

Real *

120x240/48"x96" R	MP18
75x150/30"x60" R	MN77
75x150/30"x60" Soft R	MN78
75x150/30"x60" Lapp R	MP61
75x75/30"x30" R	MQ17
75x75/30"x30" Soft R	MQ22
75x75/30"x30" Lapp R	MP75
45x90/18"x36" R	MR50
45x90/18"x36" Soft R	MR51
60x60/24"x24" R	MR38
60x60/24"x24" Soft R	MR39
30x60/12"x24" R	MR30
30x60/12"x24" Soft R	MR31



Smoke

75x150/30"x60" R	MN79
75x150/30"x60" Soft R	MN80
75x150/30"x60" Lapp R	MP62
75x75/30"x30" R	MQ18
75x75/30"x30" Soft R	MQ23
75x75/30"x30" Lapp R	MP76
45x90/18"x36" R	MR52
45x90/18"x36" Soft R	MR53
60x60/24"x24" R	MR42
60x60/24"x24" Soft R	MR43
30x60/12"x24" R	MR32
30x60/12"x24" Soft R	MR33

Paper 45x90/18"x36" Soft R



V3
Moderate



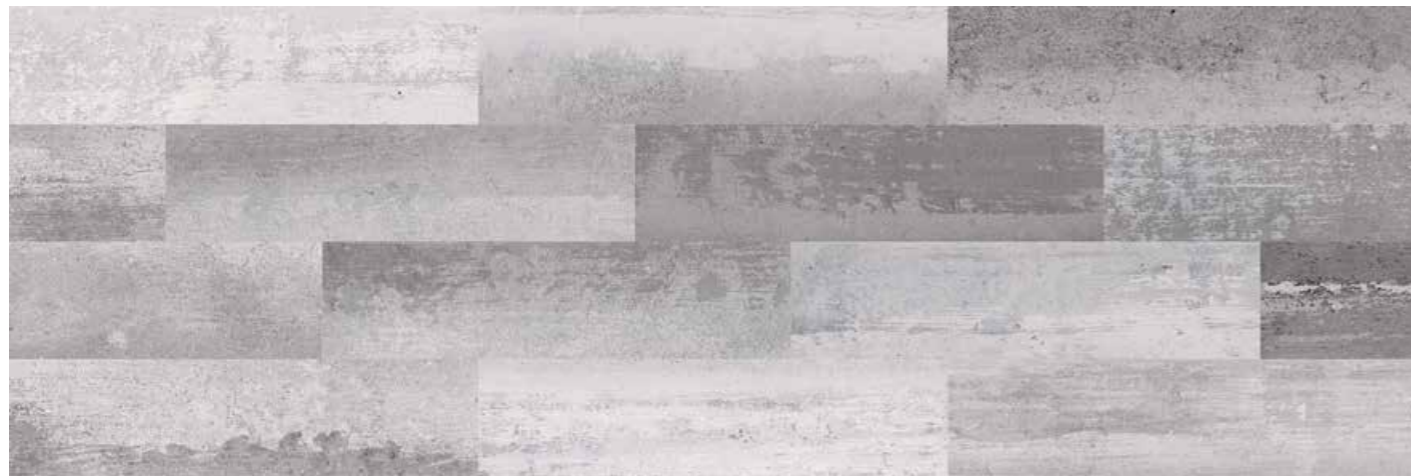
V4
Substantial *



Paper
Brick 7,5x30/3"x12" MP81



Real *
Brick 7,5x30/3"x12" MP82



Real Brick 7,5x30/3"x12"





V3
Moderate



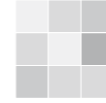
Real Alley 75x150/30"x60" R
30x60/12"x24" R
MR57
MS04

Real Alley 75x150/30"x60" R



8 soggetti diversi formato 75x150,
30x60 (miscelazione casuale)/
8 assorted motifs 75x150, 30x60 size
(random mix)/
8 sujets differents format 75x150, 30x60
(melange aleatoire)/
8 Verschiedene Motive Format 75x150,
30x60 (Zufallsmischung)/
8 verschillende ontwerpen in 75x150,
30x60 (willekeurig gemengd)/
8 motivos diferentes formato 75x150,
30x60 (mezcla aleatoria)

V3
Moderate



Paper Jungle 75x150/30"x60" R
30x60/12"x24" R
MR61
MR67



Dolphin Jungle 75x150/30"x60" R
30x60/12"x24" R
MR59
MR65



Smoke Jungle 75x150/30"x60" R
30x60/12"x24" R
MR64
MR69



Juta Jungle 75x150/30"x60" R
30x60/12"x24" R
MR60
MR66



Real Jungle 75x150/30"x60" R
30x60/12"x24" R
MR62
MR68

Soggetti diversi formato 75x150 o 30x60 (miscelazione casuale)/Assorted motifs 75x150 or 30x60 size (random mix)/
Sujets differents format 75x150 ou 30x60 (melange aleatoire)/Verschiedene Motive Format 75x150 oder 30x60 (Zufallsmischung)/
Verschillende ontwerpen in 75x150 of 30x60 (willekeurig gemengd)/Motivos diferentes formato 75x150 o 30x60 (mezcla aleatoria)



V3
Moderate



Paper Casting* 75x150/30"x60" R MR56



Dolphin Casting* 75x150/30"x60" R MR54



Smoke Casting* 75x150/30"x60" R MR58



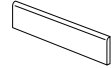
Jute Casting* 75x150/30"x60" R MR55



Pezzi speciali/Trim tiles/Pieces speciales/Formteile/Speciale delen/Piezas especiales



Battiscopa



7x75/27⁸ x30" R

Dolphin
Juta
Paper
Real
Smoke

MQ47
MQ48
MQ49
MQ50
MQ51

7x60/27⁸ x24" R

Dolphin
Juta
Paper
Real
Smoke

MQ52
MQ53
MQ54
MQ55
MQ56

È sconsigliato l'abbinamento del formato **120x240/48"x96"** con gli altri formati.
It is not recommended to match the **120x240/48"x96"** sizes with the other sizes.
Il est déconseillé d'assortir le format **120x240/48"x96"** aux autres formats.
Es wird von der Kombination der Format **120x240/48"x96"** mit den anderen Formaten abgeraten.
Het wordt afgeraden om de formaat **120x240/48"x96"** met andere formaten te combineren.
Se aconseja combinar el formato **120x240/48"x96"** con los otros formatos.

Imballi/Packing/Emballage/Verpackungseinheiten/Verpakking/Embalajes

	pcs x box	m ² / m x box	kg x box	box x pallet	m ² x pallet	kg x pallet
120x240/48"x96"	1	2,8800	58,00	18	51,84	1044,00
75x150/30"x60"	1	1,1250	24,50	25	28,13	612,50
75x75/30"x30"	2	1,1250	24,00	42	47,25	1008,00
45x90/18"x36"	3	1,2150	25,50	36	43,74	918,00
60x60/24"x24"	3	1,0800	23,40	40	43,20	936,00
30x60/12"x24"	6	1,0800	23,40	40	43,20	936,00
7,5x30/3"x12" Brick	48	1,0800	21,40	48	51,84	1027,20
7x75/27⁸ x33" Battiscopa	10	7,5000	11,00	54	405,00	594,00
7x60/27⁸ x24" Battiscopa	10	6,0000	9,00	70	420,00	630,00

Overlay MATT and SOFT finishes are recommended for interior floors, walls, and exterior walls in both residential and commercial applications.
Overlay is not recommended for exterior horizontal surfaces or exterior paving, and it is not recommended for ramps application.
Overlay SOFT finish is not recommended for interior floors in entrance areas if joined to outdoor in commercial applications.
Overlay LAPPATO is recommended for interior walls, and exterior walls in both residential and commercial applications.
Overlay LAPPATO finish is not recommended for floors.

Caratteristiche/Features/Caracteristiques/Eigenschaften/Eigenschappen/Características



UNI EN ISO 10545/14

Classe 5 / Class 5



DIN 51130

R10



B.C.R.A. Rep. CEC/81

Asciutto > 0,40 / Bagnato > 0,40



ANSI A137.1-2012 (BOT3000)

> 0,42 Wet

I valori indicati nella tabella si riferiscono a superfici naturali (non Lappato e Soft)/The values in the table refer to natural (not Lappato - honed - and Soft) surfaces /Les valeurs du tableau se rapportent à des surfaces naturelle (non Lappato - adoucís - et Soft)/Die in der Tabelle angeführten Werte beziehen sich auf naturbelassene (nicht Lappato - geläppte - und Soft) Oberflächen/ De waarden in de tabel hebben betrekking op natuurlijke oppervlakken (niet Lappato - Zijdeglans - en Soft)/Los valores indicados en la tabla se refieren a las superficies naturales (no Lappato - semipulido - y Soft)

