

ANTIC

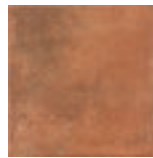
Esmaltados Glazed Tiles



PAVIMENTOS FLOOR TILES

KLINKJET
PRINTING TECHNOLOGY BY GRES ARAGON

FORMATOS | 25x25 · 33x33 cm.
SIZES



Cuero



Marrón



Ceniza



Basalto



ESMALTADO
GLAZED



Características dimensionales
Dimension tolerance

<1,25% ·
máx 2 mm.



Absorción de agua
Water absorption

3<E=6%



Coef. Dilatación termica lineal
Linear thermal expansion coefficient

3,8x10⁻⁶xC⁻¹



Resistencia a la flexión
Breaking Strength

20N/mm²



Resistencia a la abrasión superficial
Resistance to surface abrasion

Cuero
Basalto-Marrón:
PEI 3
Ceniza: PEI 4



Resistencia a las manchas
Resistance to stains

clase 5
CLASS 5



Péndulo (CTE)
Not required out of Spain

clase 1
CLASS 1



A pie descalzo
Barefoot slip resistance

B



A pie calzado
Slip resistance with footwear

R10



Desgaste transito peatonal
Erosion to pedestrian transit

H5



Resistencia al cuarteo
Crazing resistance

si/yes



Extrusión
Extruded tiles

✓



Resistencia a la helada
Frost resistance

✓



Resistencia al choque térmico
Resistance to thermal shock

✓



Resistencia química
Chemical resistance

✓

ANTIC

PAVIMENTOS FLOOR TILES

Colores / Colors



Cuero



Marrón



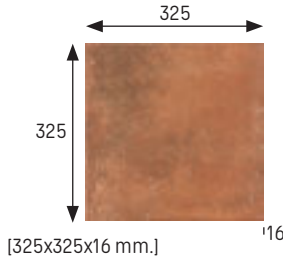
Ceniza



Basalto

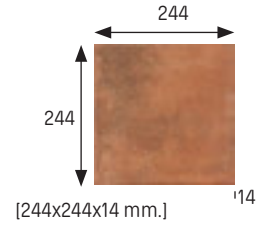
Base 33x33 Tile 33x33

Cuero	Cod. 902890 · [MC510]
Marrón	Cod. 902904 · [MC510]
Ceniza	Cod. 902918 · [MC510]
Basalto	Cod. 902911 · [MC510]



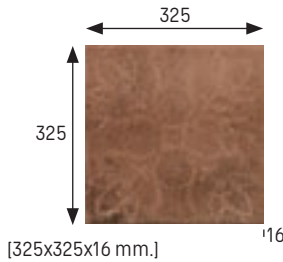
Base 25x25 Tile 25x25

Cuero	Cod. 903937 · [MC430]
Marrón	Cod. 903938 · [MC430]
Ceniza	Cod. 903940 · [MC430]
Basalto	Cod. 903939 · [MC430]



Base Decorados 33x33 Decor Tile 33x33

Cuero	Cod. 902896 · [MC510]
Marrón	Cod. 902910 · [MC510]
Ceniza	Cod. 902924 · [MC510]
Basalto	Cod. 902917 · [MC510]



Decorado / Decor

	Espesor (mm) Thickness (mm)	U.M.*	U.M./caja U.M./box	U.M./Palet U.M./Pallet	Pzs./U.M. Pcs./U.M.	Pzs./caja Pcs./box	Kg./U.M. Kg./U.M.	Kg./caja Kg./box	Kg./Palet Kg./Pallet
Base 33x33 Tile 33x33	16	m ² sqm	0,66	42,624	9	6	32,6	21,75	1391
Base 25x25 Tile 25x25	14	m ² sqm	1	60	16	16	25	12,5	1499
Base decorados 33x33 Decor Tile 33x33	16	m ² sqm	0,66	42,624	9	6	32,6	21,75	1391

*Unidad de Medida. Los artículos medidos en M² o ML se sirven contando la junta normal entre piezas
*Unit of measure. Items measured in SQM or LM are delivered assuming average joint between pieces



ANTIC Piezas especiales Special pieces

Colores / Colors



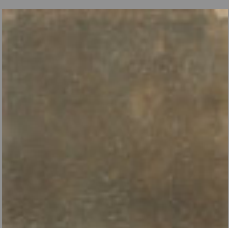
Cuero



Marrón



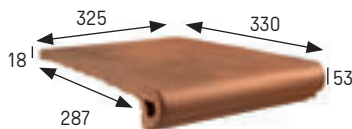
Ceniza



Basalto

Peldaño redondeado 33 Rounded stair-tread 33

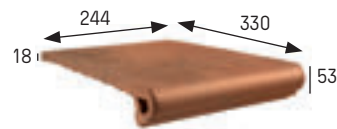
Cuero	Cod. 902891 · [PZ270]
Marrón	Cod. 902905 · [PZ270]
Ceniza	Cod. 902919 · [PZ270]
Basalto	Cod. 902912 · [PZ270]



[325x330x18 mm.]

Peldaño redondeado 25 Rounded stair-tread 25

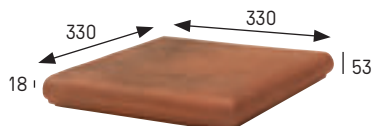
Cuero	Cod. 903961 · [PZ220]
Marrón	Cod. 903962 · [PZ220]
Ceniza	Cod. 903964 · [PZ220]
Basalto	Cod. 903963 · [PZ220]



[244x330x18 mm.]

Esquina redondeada Rounded stair-tread corner

Cuero	Cod. 902892 · [PZ555]
Marrón	Cod. 902906 · [PZ555]
Ceniza	Cod. 902920 · [PZ555]
Basalto	Cod. 902913 · [PZ555]



[330x330x18 mm.]

Rodapié 33 Skirting board 33

Cuero	Cod. 902893 · [ML150]
Marrón	Cod. 902907 · [ML150]
Ceniza	Cod. 902921 · [ML150]
Basalto	Cod. 902914 · [ML150]



[325x80x16 mm.]

Rodapié 25 Skirting board 25

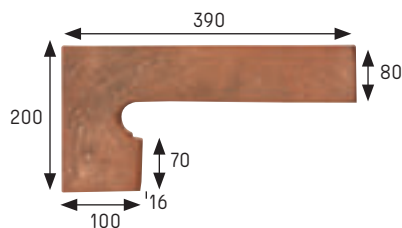
Cuero	Cod. 903965 · [ML150]
Marrón	Cod. 903966 · [ML150]
Ceniza	Cod. 903968 · [ML150]
Basalto	Cod. 903967 · [ML150]



[244x80x14 mm.]

Zanquín izda. String left side

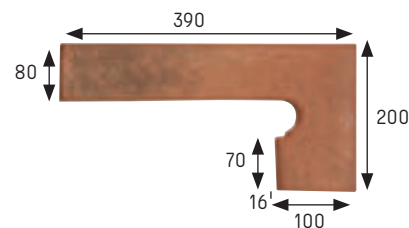
Cuero	Cod. 902894 · [PZ150]
Marrón	Cod. 902908 · [PZ150]
Ceniza	Cod. 902922 · [PZ150]
Basalto	Cod. 902915 · [PZ150]



[390x80/200x100 x16 mm.]

Zanquín dcha. String right side

Cuero	Cod. 902895 · [PZ150]
Marrón	Cod. 902909 · [PZ150]
Ceniza	Cod. 902923 · [PZ150]
Basalto	Cod. 902916 · [PZ150]



[390x80/200x100 x16 mm.]



Basalto 33x33

	Espesor (mm) Thickness (mm)	U.M.*	U.M./caja U.M./box	U.M./Palet U.M./Pallet	Pzs./U.M. Pcs./U.M.	Pzs./caja Pcs/box	Kg./U.M. Kg./U.M.	Kg./caja Kg./box	Kg./Palet Kg./Pallet
Peldaño redondeado 33 Rounded stair-tread 33	18	Pz. Pc.	6	216	1	6	4,4	26,4	950
Peldaño redondeado 25 Rounded stair-tread 25	18	Pz. Pc.	6	324	1	6	3,3	19,8	1069
Esquina redondeada Rounded stair-tread corner	18	Pz. Pc.	2	60	1	2	6	12	360
Rodapié 33 Skirting board 33	16	ml lm	8	576	3	24	2,3	18,4	1325
Rodapié 25 Skirting board 25	14	ml lm	11,25	450	4	45	2,5	27,7	1108
Zanquín izda. String left	16	Pz. Pc.	10	300	1	10	1,3	13	390
Zanquín dcha. String right	16	Pz. Pc.	10	300	1	10	1,3	13	390

*Unidad de Medida. Los artículos medidos en M² o ML se sirven contando la junta normal entre piezas
 *Unit of measure. Items measured in SQM or LM are delivered assuming average joint between pieces