

# SERIE JASPER | JASPER SERIES



natural  
unglazed



<1,25%  
máx. 2 mm



3<E≤6%



3,8x10<sup>6</sup>xC<sup>-1</sup>



20 N/mm<sup>2</sup>



<393 mm<sup>3</sup>



3-5



Deslizam. CTE: clase 3  
Slipping resist. CTE: class 3



C



R11-R10

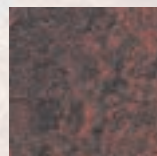


Simbología y normas en pág. 187 Symbols and Standards p. 187  
Los colores son indicativos Colours are just indicative

# Naturales *Natural Tiles*



Marrón



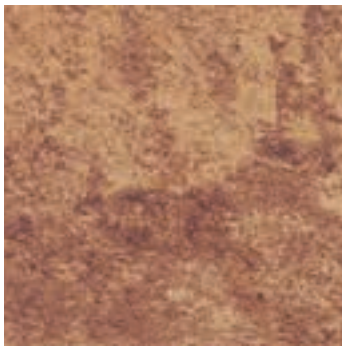
Rojo



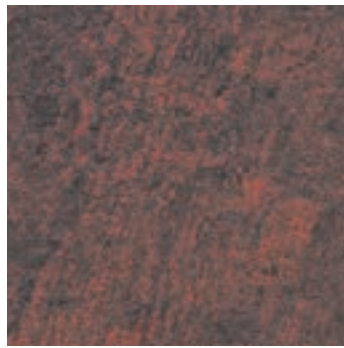
Gris

# SERIE JASPER | JASPER SERIES

## Bases Basic pieces



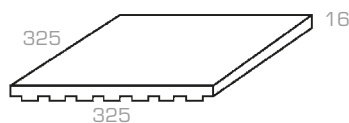
**Marrón 33x33**  
Cod. O1634



**Rojo 33x33**  
Cod. O1635



**Gris 33x33**  
Cod. O1636



**Base 33x33**  
Tile 33x33

Artículo Item	Medidas (mm) Size (mm)	Espesor (mm) Thickness (mm)	U.M. *	U.M. *		Piezas Pieces		Peso (Kg) Weight (Kg)		
						U.M.*	U.M.*	U.M.*	U.M.*	
<b>Base 33x33</b> Tile 33x33	325x325	16	M <sup>2</sup> SQM	0,67	42,88	9	6	32,6	21,75	1391

\* Unidad de Medida. Los artículos medidos en M<sup>2</sup> o ML se sirven contando la junta normal entre piezas  
\* Unit of measure. Items measured in SQM or LM are delivered assuming average joint between pieces

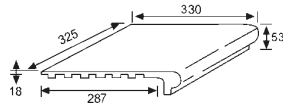


Jasper Gris 33x33

**Peldaño 24-33**  
Stair-tread 24-33



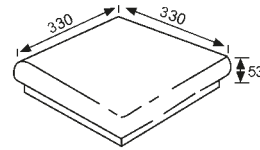
Marrón ■ Cod. 01637  
Gris ■ Cod. 01639  
Rojo ■ Cod. 01638



**Esquina ref. 24**  
Stair-tread corner



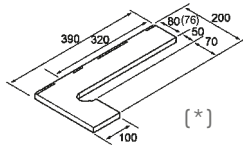
Marrón ■ Cod. 01640  
Gris ■ Cod. 01642  
Rojo ■ Cod. 01641



**Zanquín izda.**  
String left side



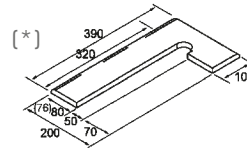
Marrón ■ Cod. 01643  
Gris ■ Cod. 01645  
Rojo ■ Cod. 01644



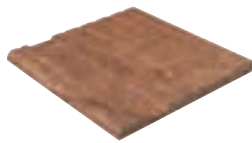
**Zanquín dcha.**  
String right side



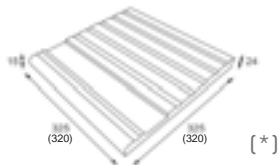
Marrón ■ Cod. 01646  
Gris ■ Cod. 01648  
Rojo ■ Cod. 01647



**Remate desbordante**  
Overflowing edge



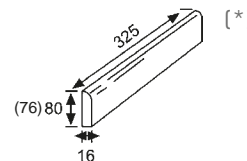
Marrón ■ Cod. 01652  
Gris ■ Cod. 01654  
Rojo ■ Cod. 01653

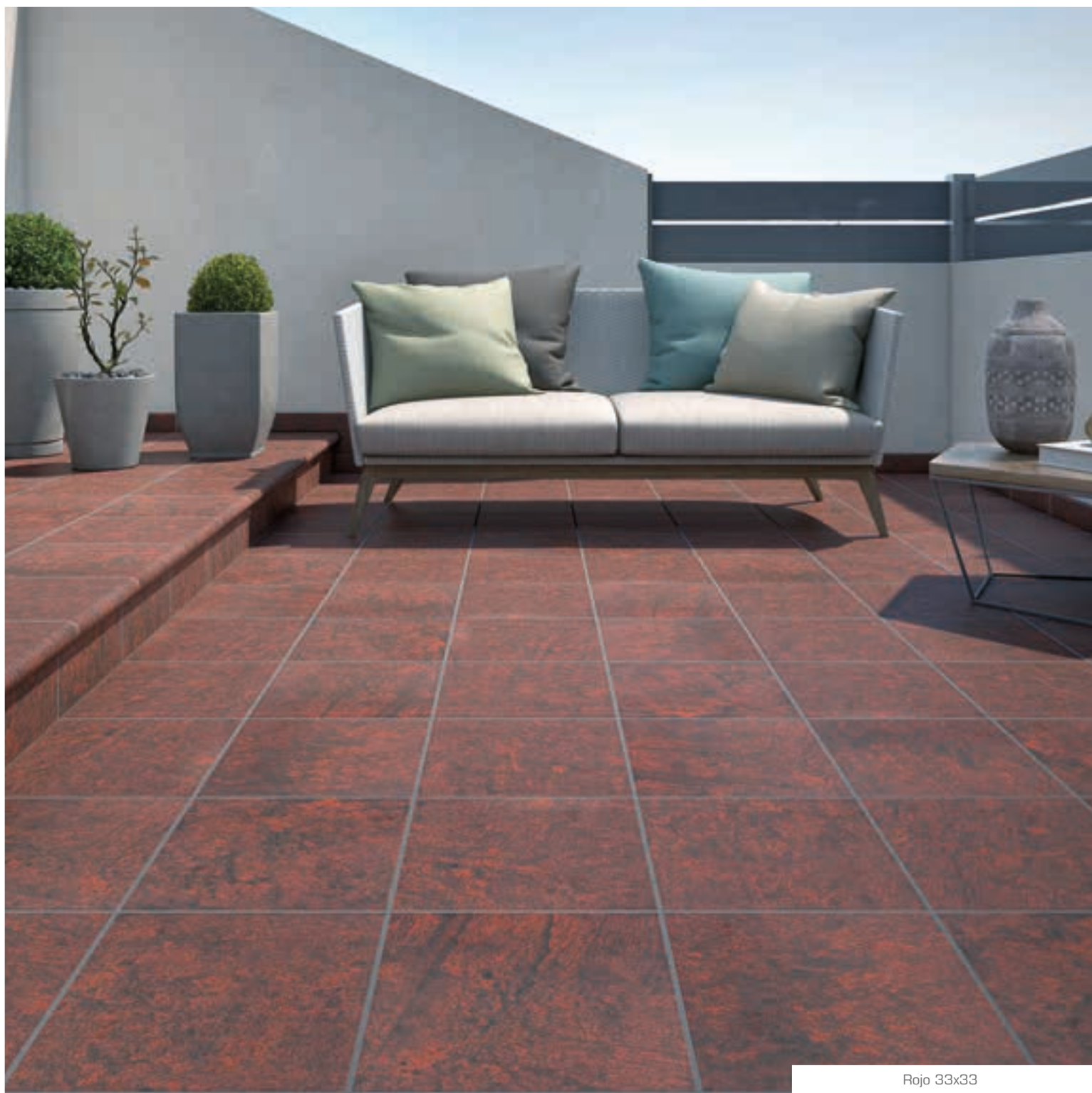


**Rodapié 33**  
Skirting 33



Marrón ■ Cod. 01649  
Gris ■ Cod. 01651  
Rojo ■ Cod. 01650





Rojo 33x33

Artículo Item	Medidas (mm) Size (mm)	Espesor (mm) Thickness (mm)	U.M. *	U.M. *		Piezas Pieces		Peso (Kg) Weight (Kg)		
						U.M.*		U.M.*		
<b>Peldaño 24-33</b> <i>Stair-tread 24-33</i>	325x330x53	18	Pz. Pc.	6	216	1	6	4,2	25,1	906
<b>Esquina</b> <i>Stair-tread corner</i>	330x330x53	20	Pz. Pc.	2	72	1	2	5,3	10,6	400
<b>Remate desbordante</b> <i>Overflowing edge</i>	325x325	15-24	Pz. Pc.	4	120	1	4	5	20	600
<b>Zanquín izda.</b> <i>String left</i>	390x80/200x100	16	Pz. Pc.	10	300	1	10	1,3	13	390
<b>Zanquín dcha.</b> <i>String right</i>	390x80/200x100	16	Pz. Pc.	10	300	1	10	1,3	13	390
<b>Rodapié 33</b> <i>Skirting board 33</i>	325x80	16	ML LM	8	576	3	24	2,3	18	1296

\* Unidad de Medida. Los artículos medidos en M<sup>2</sup> o ML se sirven contando la junta normal entre piezas  
 \*Unit of measure. Items measured in SQM or LM are delivered assuming average joint between pieces