

AZULEJ

design Patricia Urquiola

colours

sizes

technical features

packing

MU
TIN
A[®]

AZULEJ BIANCO

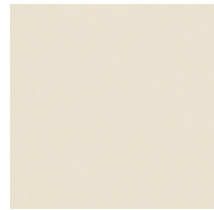
design Patricia Urquiola 2012

production industrial

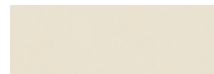
material gres porcellanato ad impasto omogeneo rettificato
smaltato con stampa digitale a freddo
rectified homogeneous porcelain stoneware
with cold digital printing glazing

thickness 10mm

*misure nominali - nominal sizes



bianco *20-20 - 8''-8''



battiscopa *4,7-20 - skirting 2''-8''

combination



27 pattern diversi 20-20
27 different 20-20 (8''-8'') patterns

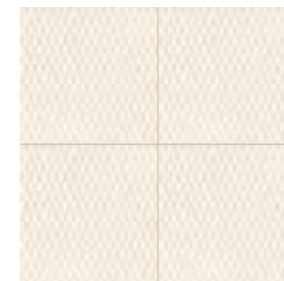
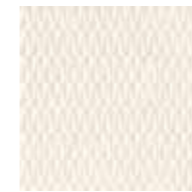
gira



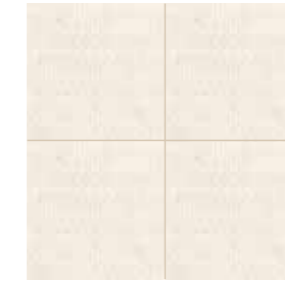
estrela



trama



renda



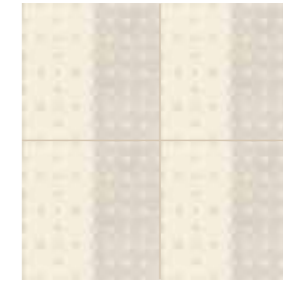
flores



cubo



trevo



diagonal



prata



9 pattern individuali 20-20 che creano infinite combinazioni
9 single patterns 20-20 (8''-8'') create endless combinations

AZULEJ GRIGIO

design Patricia Urquiola 2012

production industrial

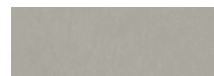
material gres porcellanato ad impasto omogeneo rettificato
smaltato con stampa digitale a freddo
rectified homogeneous porcelain stoneware
with cold digital printing glazing

thickness 10mm

*misure nominali - nominal sizes



grigio *20-20 - 8"-8"



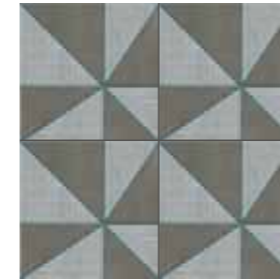
battiscopa *4,7-20 - skirting 2"-8"

combination



27 pattern diversi 20-20
27 different 20-20 (8"-8") patterns

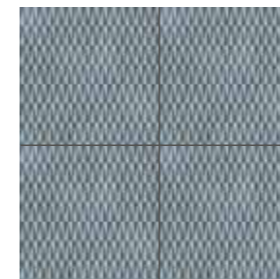
gira



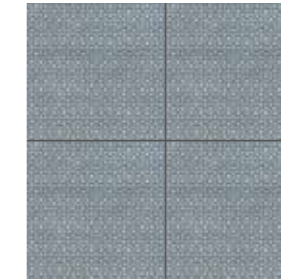
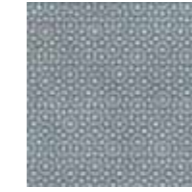
estrela



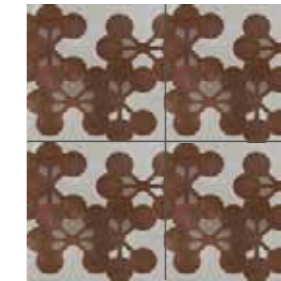
trama



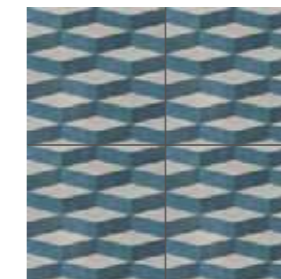
renda



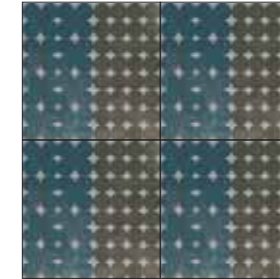
flores



cubo



trevo



diagonal



prata



9 pattern individuali 20-20 che creano infinite combinazioni
9 single patterns 20-20 (8"-8") create endless combinations

AZULEJ NERO

design Patricia Urquiola 2012

production industrial

material gres porcellanato ad impasto omogeneo rettificato
smaltato con stampa digitale a freddo
rectified homogeneous porcelain stoneware
with cold digital printing glazing

thickness 10mm

*misure nominali - nominal sizes



nero *20·20 - 8"·8"



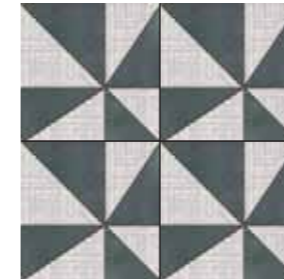
battiscopa *4,7·20 - skirting 2"·8"

combination



27 pattern diversi 20·20
27 different 20·20 (8"·8") patterns

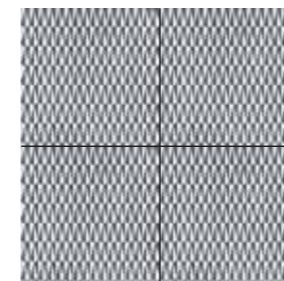
gira



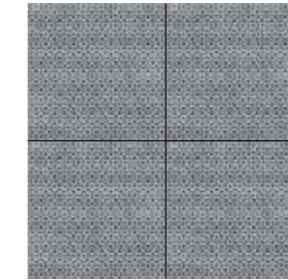
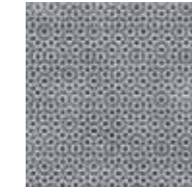
estrela



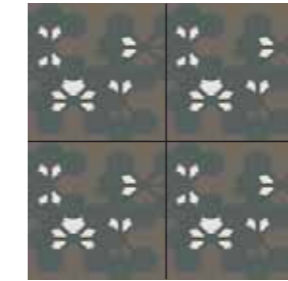
trama



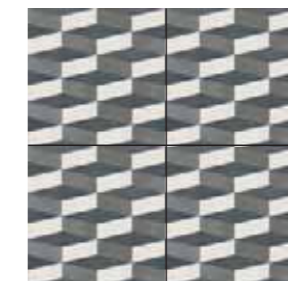
renda



flores



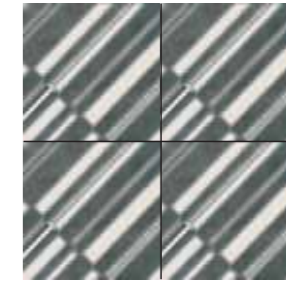
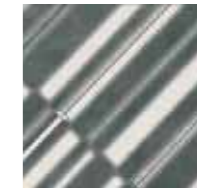
cubo



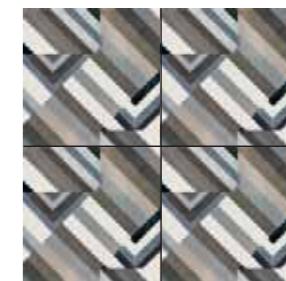
trevo



diagonal



prata



9 pattern individuali 20·20 che creano infinite combinazioni
9 single patterns 20·20 (8"·8") create endless combinations



TECHNICAL INFO

La collezione Azulej rientra nella tipologia dei prodotti “industrial” di Mutina. Viene realizzata in gres porcellanato smaltato attraverso il moderno sistema di “decorazione in digitale a freddo” che consente di decorare in modo diverso ed indipendente durante il medesimo ciclo produttivo. La principale novità introdotta da Mutina nell’utilizzo di questa tecnologia, è il modo leggero di calibrare il mix dei colori in modo da rendere naturale e quasi materica la grafica realizzata senza l’effetto stampato ed artificiale di una mera riproduzione fotografica. Il rispetto per l’ambiente diventa una prerogativa della collezione che viene realizzata reintroducendo nel sistema produttivo gli impasti in esubero, senza l’emissione di elementi nocivi nell’ambiente, con un contenuto in parte riciclato degli impasti utilizzati ed infine in assenza di V.O.C. (Volatile Organic Compounds) ossia di quelle sostanze chimiche volatili in grado di evaporare facilmente a temperatura ambiente (come il benzene, il cloroformio, l’etanolo, il butanolo e la formaldeide) la cui esposizione prolungata in ambienti chiusi può provocare effetti dannosi sia acuti che cronici sulla salute.

The Azulej collection is part of the “industrial” products range by Mutina. It is manufactured in glazed porcelain stoneware using the latest “cold digital printing” technology, which enables to decorate the tiles in a different and independent way during a single productive process. The main innovation Mutina has introduced is that of using this technology not to merely reproduce a picture with a printing and artificial effect, but to lightly balance the colors mixture to make the graphics natural and material. The respect for the environment becomes a prerogative of the collection which is obtained by re-introducing into the productive process the exceeding residues, without the emission of dangerous elements into the environment, with a partial use of recycled powders and finally with the absence of V.O.C. (Volatile Organic Compounds). These volatile chemicals (such as benzene, chloroform, ethanol, butane and formaldehyde) easily evaporate at room temperature and prolonged exposure to them can, in closed environments, cause both acute and chronic harmful effects for the health.

AZULEJ / technical features

norma standard	caratteristiche features	valore prescritto value required	azulej
ISO 10545/3	assorbimento d'acqua water absorption	<0,5%	0,04%
ASTM C373		<0,5%	0,04%
EN 101	durezza superficiale (scala mohs) surface hardness (scala mohs)	> 5	6
ISO 10545/9	resistenza agli sbalzi termici resistance to thermal shock	nessuna alterazione visibile no visible alteration	resiste resistant
ASTM C484		no samples must show visible defects	unaffected
ISO 10545/12	resistenza al gelo frost resistance	nessuna alterazione visibile no visible alteration	resiste resistant
ASTM C1026		unaffected	unaffected
ISO 10545/13	resistenza agli attacchi chimici resistance to chemical attacks	nessuna alterazione visibil no visible alteration	resiste resistant
ASTM C650			unaffected
ISO 10545/4	sforzo di rottura (N) breaking strength (N)	Sp \geq 7,5 min 1300	2525,1
DIN 51130 - 04		valori medi 6° ÷ 10° 10° ÷ 19° 19° ÷ 27° 27° ÷ 35° > 35°	R9 R10 R11 R12 R13
ASTM C1028		> 0,60	dry 0,85 wet 0,77

LEED CERTIFICATION 4.1 14,5% recycled material (pre-consumer)

sistema produttivo con certificazione ambientale ISO 14001 : 2004
environmental management system ISO 14001 : 2004

AZULEJ / packing

	pz-mq pcs-sqm	pz-scat. pcs-box	mq-scat. sqm-box	scat.-pal. box-pal.	kg-scat. kg-box	kg-pal. kg-pal.	mq-pal sqms-pal
20·20	25	24	0,96	72	20,95	1508	69,12
pattern 20·20	25	24	0,96	72	20,95	1508	69,12
combination 20·20	25	27	1,08	48	23,45	1126	51,84
battiscopa 4,7·20	-	10	2 ml	-	2,15	-	-



V1
variazione uniforme
uniform variation

MUTINA.IT

Follow us on

