



BOULEVARD

City style for spaces with character.

Estilo citadino para espaços com carácter.
Style urbain pour des espaces de caractère.
Stadtstil für Räume mit Charakter.
Estilo de ciudad para espacios con carácter.
Городской стиль для пространства с характером.

WALL:
BOULEVARD DARK 29.5X59.2 CM RET. NATURAL P3083R
FLOOR:
BOULEVARD DARK 59.2X59.2 CM RET. NATURAL P6098R

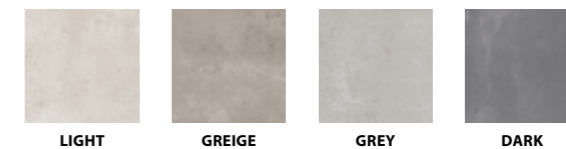


WALL:
BOULEVARD GREY 29.5X59.2 CM RET. NATURAL P3082R
FLOOR:
BOULEVARD GREY 59.2X59.2 CM RET. NATURAL P6097R



WALL & FLOOR / PORCELAIN TILES
 Revestimento e Pavimento / Porcelanato . Revêtements & Carreaux de Sol / Grès Cérame
 Wand & Boden / Feinsteinzeug , Revestimiento y Pavimento / Porcelánico
 Настенная плитка и Плитка для пола / Керамогранит

- 45x90cm / 17.7"x35.4"
- 60x60cm / 23.6"x23.6"
- 45x45cm / 17.7"x17.7"
- 30x60cm / 11.8"x23.6"



BOULEVARD DARK 29.5X59.2 CM RET. ANTI-SLIP P3087R

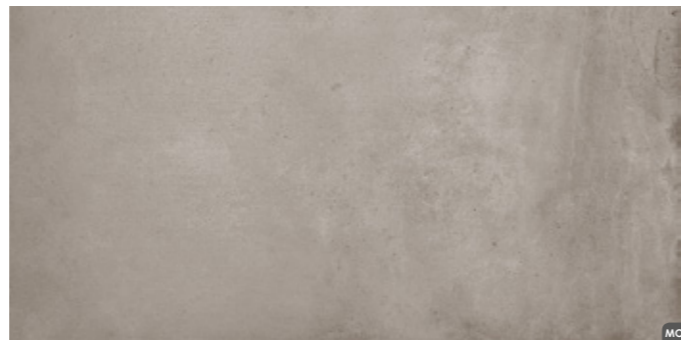
45x90cm / 17.7"x35.4"
 30x60cm / 11.8"x23.6"
 60x60cm / 23.6"x23.6"
 45x45cm / 17.7"x17.7"



LIGHT

44.3x88.8x1 cm ret.
 29.5x59.2x0.85 cm ret.
 30x60x0.85 cm

MOHS 7
 P9105R | C27
 P3080R | C21 P3084R | C22
 P3080 | C13 P3084 | C14



GREIGE

44.3x88.8x1 cm ret.
 29.5x59.2x0.85 cm ret.
 30x60x0.85 cm

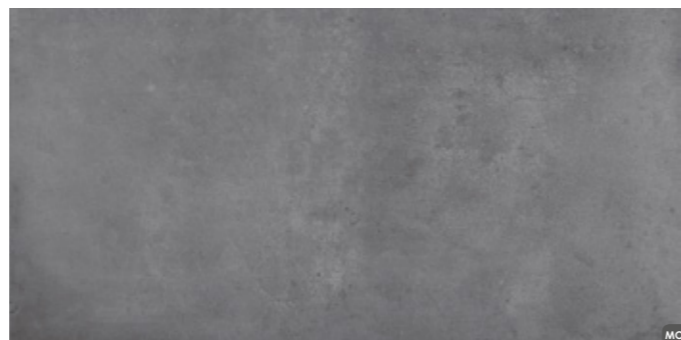
MOHS 7
 P9106R | C27
 P3081R | C21 P3085R | C22
 P3081 | C13 P3085 | C14



GREY

44.3x88.8x1 cm ret.
 29.5x59.2x0.85 cm ret.
 30x60x0.85 cm

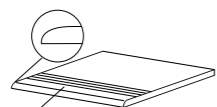
MOHS 7
 P9107R | C27
 P3082R | C21 P3086R | C22
 P3082 | C13 P3086 | C14



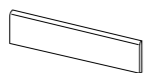
DARK

44.3x88.8x1 cm ret.
 29.5x59.2x0.85 cm ret.
 30x60x0.85 cm

MOHS 7
 P9108R | C27
 P3083R | C21 P3087R | C22
 P3083 | C13 P3087 | C14



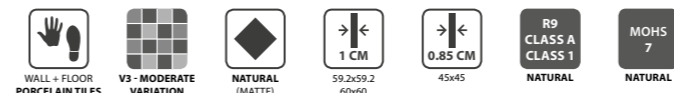
(L)
**STAIRSTEP . DEGRAU . PELDAÑO
 NEZ-DE-MARCHE . STUFE . СТУПЕНЬ**
 88.8(L)x44.3x1 cm ret. | D32
 59.2(L)x59.2x1 cm ret. | D30
 59.2(L)x29.5x1 cm ret. | D23
 59.2(L)x29.5x0.85 cm ret. | D21
 60(L)x60x1 cm | D25
 45(L)x45x0.85 cm | D20
 60(L)x30x1 cm | D20
 60(L)x30x0.85 cm | D18



**SKIRTING . RODAPÉ . RODAPIÉ
 PLINTHE . SOCKEL . ПЛИНТУС**
 8x44.3x1 cm ret. | D8
 8x59.2x1 cm ret. | D11
 8x60x1 cm | D9
 8x45x0.85 cm | D7

SIZES (CM)	PIECES / BOX	SQM / BOX	WEIGHT / BOX	BOX / PALLET	SQM / PALLET	WEIGHT / PALLET
Dimensão . Format Maße . Formato Размеры	Peças / Caixa . Pièces / Boîte Stück / Karton . Piezas / Caja Штук / Коробка	M² / Caixa . M² / Boîte M² / Karton . M² / Caja Кв.м / Коробка	Peso / Caixa . Poids / Boîte Gewicht / Karton . Peso / Caja Вес / Коробка	Caixa / Paleta . Boîte / Palette Kartons / Palette . Caja / Pallet Коробок / Поддон	M² / Paleta . M² / Palette M² / Karton . M² / Pallet Кв.м / Поддон	Peso / Paleta . Poids / Palette Gewicht / Palette . Peso / Pallet Вес / Поддон
44.3x88.8x1 ret.	2	0.787	17.72	43	33.841	782
29.5x59.2x0.85 ret.	7	1.220	22.60	40	48.800	924
30x60x0.85	7	1.260	23.40	40	50.400	956

45x90cm / 17.7"x35.4"
 30x60cm / 11.8"x23.6"
 60x60cm / 23.6"x23.6"
 45x45cm / 17.7"x17.7"



LIGHT

59.2X59.2X1 cm ret.
 60X60X1 cm
 45X45X0.85 cm

MOHS 7
 P6095R | C22
 P6095 | C16
 PE020 | C11



GREIGE

59.2X59.2X1 cm ret.
 60X60X1 cm
 45X45X0.85 cm

MOHS 7
 P6096R | C22
 P6096 | C16
 PE021 | C11



GREY

59.2X59.2X1 cm ret.
 60X60X1 cm
 45X45X0.85 cm

MOHS 7
 P6097R | C22
 P6097 | C16
 PE022 | C11



DARK

59.2X59.2X1 cm ret.
 60X60X1 cm
 45X45X0.85 cm

MOHS 7
 P6098R | C22
 P6098 | C16
 PE023 | C11

SIZES (CM)	PIECES / BOX	SQM / BOX	WEIGHT / BOX	BOX / PALLET	SQM / PALLET	WEIGHT / PALLET
Dimensão . Format Maße . Formato Размеры	Peças / Caixa . Pièces / Boîte Stück / Karton . Piezas / Caja Штук / Коробка	M² / Caixa . M² / Boîte M² / Karton . M² / Caja Кв.м / Коробка	Peso / Caixa . Poids / Boîte Gewicht / Karton . Peso / Caja Вес / Коробка	Caixa / Paleta . Boîte / Palette Kartons / Palette . Caja / Pallet Коробок / Поддон	M² / Paleta . M² / Palette M² / Karton . M² / Pallet Кв.м / Поддон	Peso / Paleta . Poids / Palette Gewicht / Palette . Peso / Pallet Вес / Поддон
59.2x59.2x1 ret.	3	1.050	23.20	36	37.800	855
60x60x1	3	1.080	23.78	36	38.880	876
45x45x0.85	5	1.010	19.20	36	36.360	711