

A wall of subway tiles in two colors: white and blue. The top section consists of white tiles, and the bottom section consists of blue tiles. The tiles have a 'brick crackle' texture. In the foreground, there is a wooden surface with a large, textured, golden-brown starfish, several small seashells, and a piece of white driftwood.

# BRICK CRACKLE COLLECTION

GLOSSY  
BRILLO



HANDMADE LOOK  
ACABADO RÚSTICO



CRACKLED  
CRAQUELADO



RED BODY  
ARCILLA ROJA



# BRICK CRACKLE COLLECTION

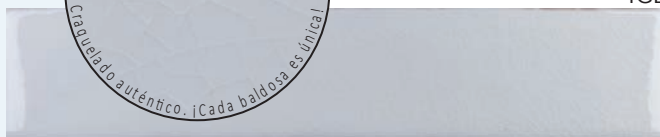
## COLECCIÓN BRICK CRACKLE

9,84 # 1,97 in.

**25#5 cm**



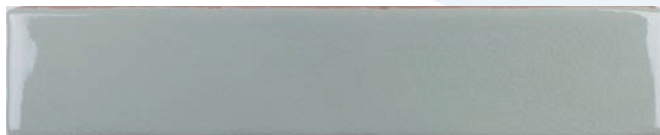
ICE



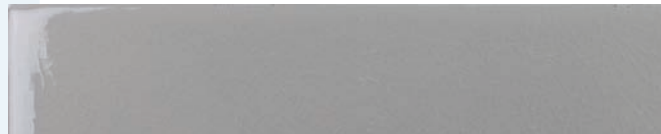
IVORY



WILLOW



TURTLEDOVE



OCEAN



LAGOON



## SPECIAL PIECES / PIEZAS ESPECIALES

9,84 # 1,10 in.  
**25#3 cm**

MOLDURA  
AVAILABLE IN ALL COLOURS  
DISPONIBLE EN TODOS LOS COLORES



9,84 # 1,18 in.  
**25#3 cm**

BULLNOSE <sup>2</sup>  
AVAILABLE IN ALL COLOURS  
DISPONIBLE EN TODOS LOS COLORES





## PRODUCT INFORMATION / INFORMACIÓN SOBRE EL PRODUCTO

Models Ocean and Lagoon show variations in color thanks to glaze accumulation on the irregular surface.

Wall tiles for indoor use only.

For Crackle tiles the use of sealing products is advised. Amadís recommends Fila MP/90.

---

Las gamas Ocean y Lagoon presentan variaciones de los tonos gracias a la acumulación de esmalte en la superficie irregular.

Revestimiento solo para uso interior.

Para el azulejo craquelado se recomienda el uso de productos de sellado. Amadís recomienda Fila MP/90.