

## CONCRETE

### The sublime authenticity of cement in spaces full of character.

A sublime autenticidade do cimento em espaços cheios de carácter.

L'authenticité sublime de ciment dans les espaces de caractère.

Das Erhabene Authentizität von Zement in Räumen voller Charakter.

La sublime autenticidad de cemento en espacios llenos de carácter.

Изысканная имитация цемента в пространстве полном индивидуальности.

WALL:  
CONCRETE BLEND 59.2X59.2 CM RET. SEMI-POLISHED PT66P

FLOOR:  
CONCRETE JOIN 59.2X59.2 CM RET. SEMI-POLISHED PT69P



WALL:  
CONCRETE MUD 29.5X59.2 CM RET. SEMI-POLISHED P3051P  
FLOOR:  
CONCRETE SAND 59.2X59.2 CM RET. SEMI-POLISHED P6050P



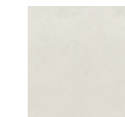
**WALL & FLOOR / PORCELAIN TILES**  
 Revestimento e Pavimento / Porcelanato . Revêtements & Carreaux de Sol / Grès Cérame  
 Wand & Boden / Feinsteinzeug . Revestimiento y Pavimento / Porcelánico  
 Настенная плитка и Плитка для пола / Керамогранит

45x90cm / 17.7"x35.4"

22x90cm / 8.7"x35.4"

60x60cm / 23.6"x23.6"

30x60cm / 11.8"x23.6"



BLEND



SAND



MUD



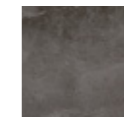
MASS



FUSE



LAVA



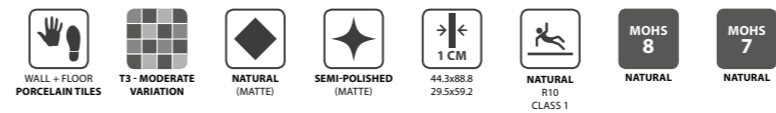
JOIN



CONCRETE MUD 59.2X59.2 CM RET. NATURAL P6051R



FLOOR:  
CONCRETE LAVA 44.3X88.8 CM RET. NATURAL P9052R



45x90cm / 17.7"x35.4"  
30x60cm / 11.8"x23.6"  
22x90cm / 8.7"x35.4"  
60x60cm / 23.6"x23.6"

CONCRETE



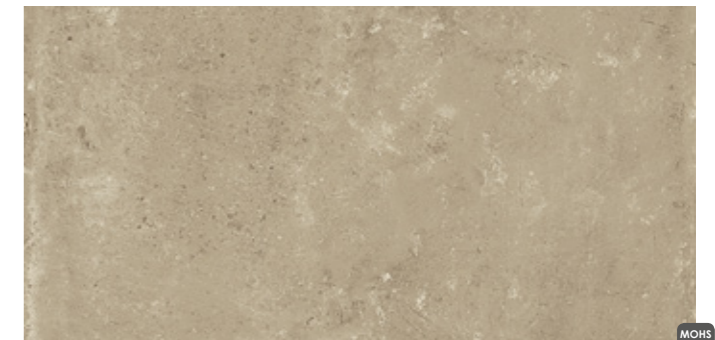
**BLEND**  
44.3x88.8x1 cm ret.  
29.5x59.2x1 cm ret.  
CT56R | C31  
PT66RC | C25  
CT56P | C33  
PT66PC | C29  
MOHS 8



**SAND**  
44.3x88.8x1 cm ret.  
29.5x59.2x1 cm ret.  
P9050R | C31  
P6050RC | C25  
P9050P | C33  
P6050PC | C29  
MOHS 8



**MASS**  
44.3x88.8x1 cm ret.  
29.5x59.2x1 cm ret.  
CT57R | C31  
PT67RC | C25  
CT57P | C33  
PT67PC | C29  
MOHS 8



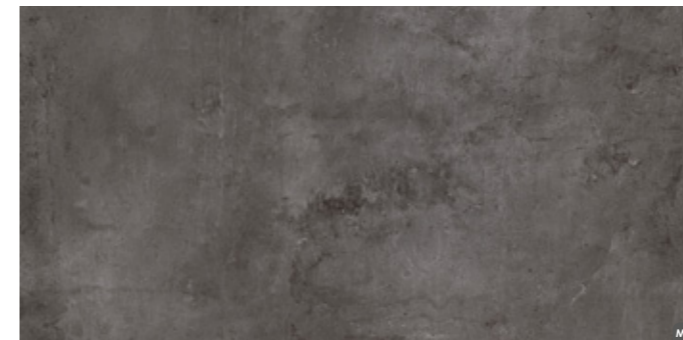
**MUD**  
44.3x88.8x1 cm ret.  
29.5x59.2x1 cm ret.  
P9051R | C31  
P6051RC | C25  
P9051P | C33  
P6051PC | C29  
MOHS 8



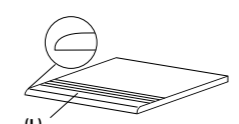
**FUZE**  
44.3x88.8x1 cm ret.  
29.5x59.2x1 cm ret.  
CT58R | C31  
PT68RC | C25  
CT58P | C33  
PT68PC | C29  
MOHS 8



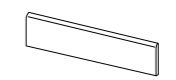
**LAVA**  
44.3x88.8x1 cm ret.  
29.5x59.2x1 cm ret.  
P9052R | C31  
P6052RC | C25  
P9052P | C33  
P6052PC | C29  
MOHS 7



**JOIN**  
44.3x88.8x1 cm ret.  
29.5x59.2x1 cm ret.  
CT59R | C31  
PT69RC | C25  
CT59P | C33  
PT69PC | C29  
MOHS 7



(L)  
**STAIRSTEP . DEGRAU . PELDAÑO**  
**NEZ-DE-MARCHE . STUFE . СТУПЕНЬ**  
88.8(L)x44.3x1 cm ret. | D32  
59.2(L)x59.2x1 cm ret. | D30  
59.2(L)x29.5x1 cm ret. | D21

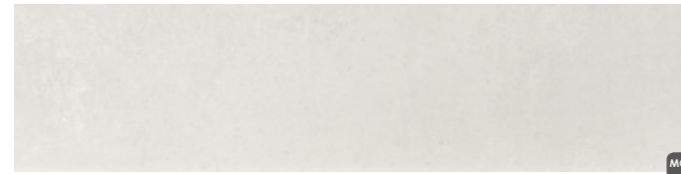
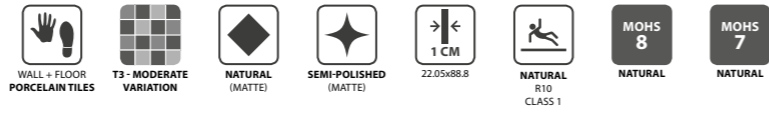


**SKIRTING . RODAPÉ . RODAPIÉ**  
**PLINTHE . SOCKEL . ПЛИНТУС**  
8x44.3x1 cm ret. | D8  
8x59.2x1 cm ret. | D11

SIZES (CM)	PIECES / BOX	SQM / BOX	WEIGHT / BOX	BOX / PALLET	SQM / PALLET	WEIGHT / PALLET
Dimensão . Format	Peças / Caixa . Pièces / Boîte	M <sup>2</sup> / Caixa . M <sup>2</sup> / Boîte	Peso / Caixa . Poids / Boîte	Caixa / Palette . Boîte / Palette	M <sup>2</sup> / Palette . M <sup>2</sup> / Palette	Peso / Palette . Poids / Palette
Maße . Formato	Stück / Karton . Piezas / Caja	M <sup>2</sup> / Karton . M <sup>2</sup> / Caja	Gewicht / Karton . Peso / Caja	Kartons / Palette . Caja / Pallet	M <sup>2</sup> / Palette . M <sup>2</sup> / Pallet	Gewicht / Palette . Peso / Pallet
Размеры	Штук / Коробка	Кв.м / Коробка	Вес / Коробка	Коробок / Поддон	Кв.м / Поддон	Вес / Поддон
44.3x88.8x1 ret.	2	0.787	17.72	43	33.841	782
29.5x59.2x1 ret.	6	1.050	22.79	32	33.600	754

CONCRETE

45x90cm / 17.7"x35.4"  
 30x60cm / 11.8"x23.6"  
**22x90cm / 8.7"x35.4"**  
 60x60cm / 23.6"x23.6"



**BLEND**  
 22.05x88.8x1 cm ret. CT56RC2 | C31 CT56PC2 | C33



**SAND**  
 22.05x88.8x1 cm ret. P9050RC2 | C31 P9050PC2 | C33



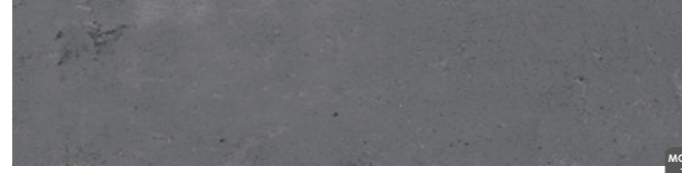
**MASS**  
 22.05x88.8x1 cm ret. CT57RC2 | C31 CT57PC2 | C33



**MUD**  
 22.05x88.8x1 cm ret. P9051RC2 | C31 P9051PC2 | C33



**FUSE**  
 22.05x88.8x1 cm ret. CT58RC2 | C31 CT58PC2 | C33



**LAVA**  
 22.05x88.8x1 cm ret. P9052RC2 | C31 P9052PC2 | C33



**JOIN**  
 22.05x88.8x1 cm ret. CT59RC2 | C31 CT59PC2 | C33



WALL:  
 CONCRETE BLEND 22.05X88.8 CM RET. SEMI-POLISHED CT56PC2  
 FLOOR:  
 CONCRETE BLEND 59.2X59.2 CM RET. SEMI-POLISHED PT66P

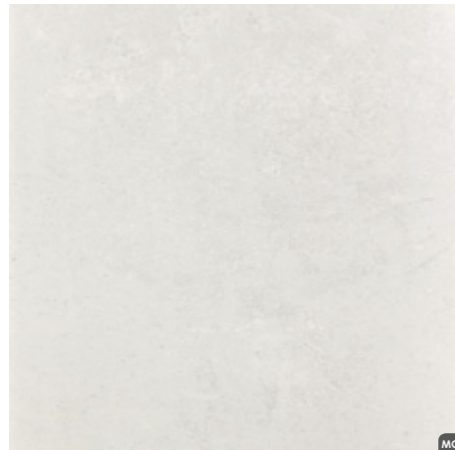
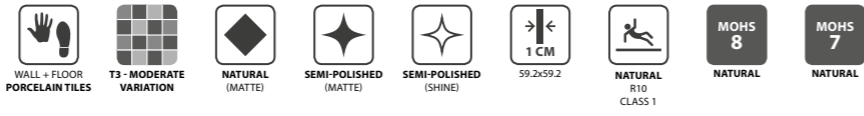


WALL:  
 CONCRETE FUSE 22.05X88.8 CM RET. NATURAL CT58RC2  
 FLOOR:  
 CONCRETE FUSE 44.3X88.8 CM RET. NATURAL CT58R

SIZES (CM)	PIECES / BOX	SQM / BOX	WEIGHT / BOX	BOX / PALLET	SQM / PALLET	WEIGHT / PALLET
Dimensão .Format Maße . Formato Размеры	Peças / Caixa . Pièces / Boîte Stück / Karton . Piezas / Caja Штук / Коробка	M <sup>2</sup> / Caixa . M <sup>2</sup> / Boîte M <sup>2</sup> / Karton . M <sup>2</sup> / Caja Кв.м / Коробка	Peso / Caixa . Poids / Boîte Gewicht / Karton . Peso / Caja Вес / Коробка	Caixa / Paleta . Boîte / Palette Kartons / Palette . Caja / Pallet Коробок / Поддон	M <sup>2</sup> / Paleta . M <sup>2</sup> / Palette M <sup>2</sup> / Karton . M <sup>2</sup> / Pallet Кв.м / Поддон	Peso / Paleta . Poids / Palette Gewicht / Palette . Peso / Pallet Вес / Поддон
22.05x88.8x1 ret.	5	0.980	21.67	44	43.120	973

CONCRETE

45x90cm / 17.7"x35.4"  
 30x60cm / 11.8"x23.6"  
 22x90cm / 8.7"x35.4"  
 60x60cm / 23.6"x23.6"



**BLEND**  
 59.2X59.2X1 cm ret. PT66R | C28 PT66P | C31 PT66SPB | C36



**SAND**  
 59.2X59.2X1 cm ret. P6050R | C28 P6050P | C31 P6050SPB | C36



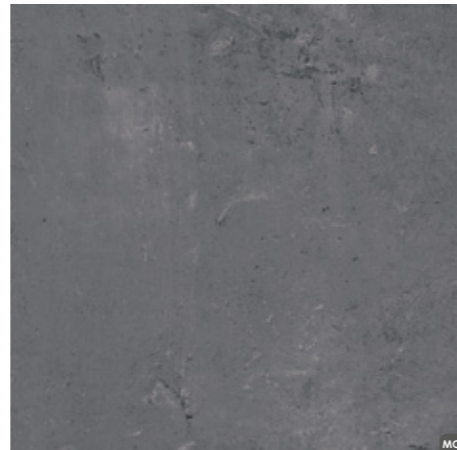
**MUD**  
 59.2X59.2X1 cm ret. P6051R | C28 P6051P | C31 P6051SPB | C36



**MASS**  
 59.2X59.2X1 cm ret. PT67R | C28 PT67P | C31 PT67SPB | C36



**FUSE**  
 59.2X59.2X1 cm ret. PT68R | C28 PT68P | C31 PT68SPB | C36



**LAVA**  
 59.2X59.2X1 cm ret. P6052R | C28 P6052P | C31 P6052SPB | C36



**JOIN**  
 59.2X59.2X1 cm ret. PT69R | C28 PT69P | C31 PT69SPB | C36



**DECOR SHADOW**  
 59.2X59.2X1 cm ret. PT65R | C29 PT65P | C33



**DECOR SEPIA**  
 59.2X59.2X1 cm ret. P6053R | C29 P6053P | C33

SIZES (CM)	PIECES / BOX	SQM / BOX	WEIGHT / BOX	BOX / PALLET	SQM / PALLET	WEIGHT / PALLET
Dimensão . Format Maße . Formato Размеры	Peças / Caixa . Pièces / Boîte Stück / Karton . Piezas / Caja Штук / Коробка	M <sup>2</sup> / Caixa . M <sup>2</sup> / Boîte M <sup>2</sup> / Karton . M <sup>2</sup> / Caja Кв.м / Поддон	Peso / Caixa . Poids / Boîte Gewicht / Karton . Peso / Caja Вес / Коробка	Caixa / Paleta . Boîte / Palette Kartons / Palette . Caja / Pallet Коробок / Поддон	M <sup>2</sup> / Paleta . M <sup>2</sup> / Palette M <sup>2</sup> / Karton . M <sup>2</sup> / Pallet Кв.м / Поддон	Peso / Paleta . Poids / Palette Gewicht / Palette . Peso / Pallet Вес / Поддон
59.2x59.2x1 ret.	3	1.050	23.20	36	37.800	855



CONCRETE BLEND 59.2X59.2 CM RET. SEMI-POLISHED PT66PB



LEFT WALL:  
 CONCRETE JOIN 22.05X88.8 CM RET. SEMI-POLISHED CT59PC2

RIGHT WALL:  
 CONCRETE MASS 22.05X88.8 CM RET. SEMI-POLISHED CT57PC2

FLOOR:  
 DECOR SHADOW CONCRETE 59.2X59.2 CM RET. SEMI-POLISHED PT65P

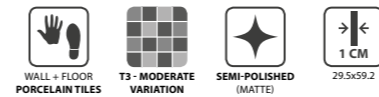
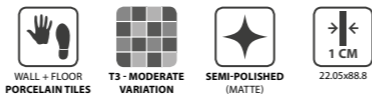


WALL:  
 CONCRETE BLEND 59.2X59.2 CM RET. SEMI-POLISHED PT66P

FLOOR:  
 CONCRETE JOIN 59.2X59.2 CM RET. SEMI-POLISHED PT69P

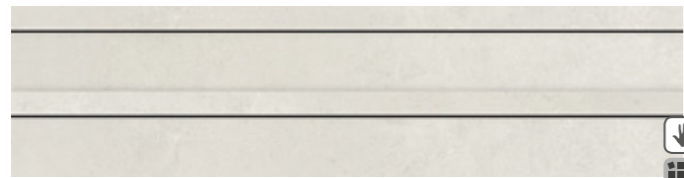
CONCRETE

45x90cm / 17.7"x35.4"  
 30x60cm / 11.8"x23.6"  
**22x90cm / 8.7"x35.4"**  
 60x60cm / 23.6"x23.6"



CONCRETE

45x90cm / 17.7"x35.4"  
 30x60cm / 11.8"x23.6"  
 22x90cm / 8.7"x35.4"  
 60x60cm / 23.6"x23.6"



**BOND CONCRETE BLEND** (PIECE)  
 22.05x88.8x1 cm

FCT56P | D34



**BOND CONCRETE SAND** (PIECE)  
 22.05x88.8x1 cm

FCT50P | D34



**BOND CONCRETE MASS** (PIECE)  
 22.05x88.8x1 cm

FCT57P | D34



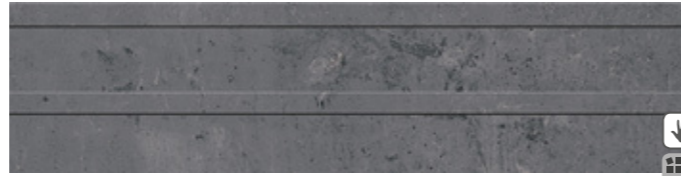
**BOND CONCRETE MUD** (PIECE)  
 22.05x88.8x1 cm

FCT51P | D34



**BOND CONCRETE FUSE** (PIECE)  
 22.05x88.8x1 cm

FCT58P | D34



**BOND CONCRETE LAVA** (PIECE)  
 22.05x88.8x1 cm

FCT52P | D34

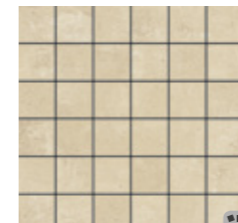


**BOND CONCRETE JOIN** (PIECE)  
 22.05x88.8x1 cm

FCT59P | D34



**MOSAIC CONCRETE BLEND**  
 (4.7X4.7 CM) (PIECE)  
 29.5x29.5x1 cm DC110 | D24



**MOSAIC CONCRETE SAND**  
 (4.7X4.7 CM) (PIECE)  
 29.5x29.5x1 cm DC180 | D24



**MOSAIC CONCRETE MUD**  
 (4.7X4.7 CM) (PIECE)  
 29.5x29.5x1 cm DC181 | D24



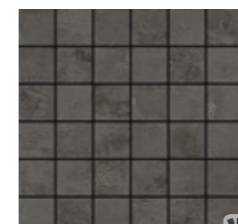
**MOSAIC CONCRETE MASS**  
 (4.7X4.7 CM) (PIECE)  
 29.5x29.5x1 cm DC111 | D24



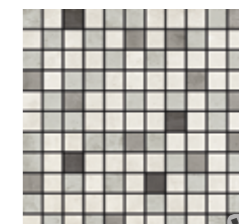
**MOSAIC CONCRETE FUSE**  
 (4.7X4.7 CM) (PIECE)  
 29.5x29.5x1 cm DC112 | D24



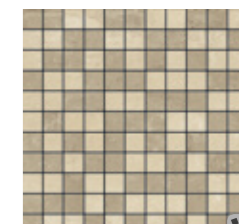
**MOSAIC CONCRETE LAVA**  
 (4.7X4.7 CM) (PIECE)  
 29.5x29.5x1 cm DC182 | D24



**MOSAIC CONCRETE JOIN**  
 (4.7X4.7 CM) (PIECE)  
 29.5x29.5x1 cm DC113 | D24



**MOSAIC MERGE CONCRETE**  
 (2.5X2.5 CM) (PIECE)  
 29.5x29.5x1 cm DC107<sup>(A)</sup> | D32



**MOSAIC MERGE WARM CONCRETE**  
 (2.5X2.5 CM) (PIECE)  
 29.5x29.5x1 cm DC109<sup>(A)</sup> | D32

<sup>(A)</sup> RANDOM DRAWING . DESENHO ALEATORIO . DESSIN ALÉATOIRE . WECHSELNDES DESIGN . DISEÑO ALEATORIO . ЖЕРЕБЬЕВКИ



WALL:  
 BOND CONCRETE FUSE 22.05X88.8 CM SEMI-POLISHED FCT58P  
 FLOOR:  
 CONCRETE JOIN 59.2X59.2 CM RET. SEMI-POLISHED PT69P



MOSAIC MERGE CONCRETE 29.5X29.5 CM DC107