

COVER

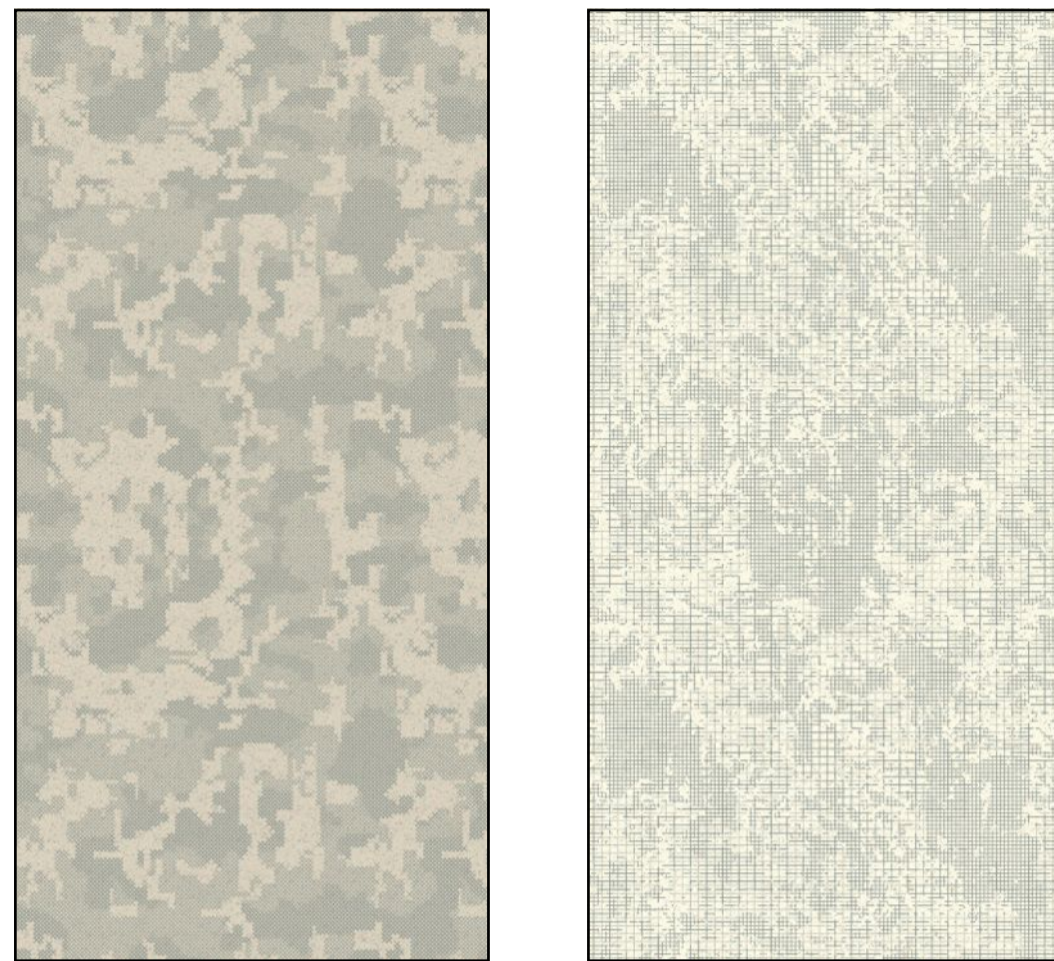
design Patricia Urquiola

sizes and colours

technical features

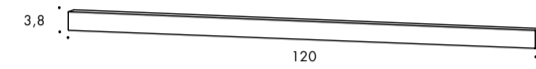
MU
TIN
A[®]

Cover White

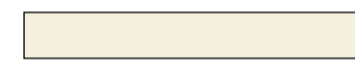


design Patricia Urquiola 2017
production industrial
material gres porcellanato smaltato ad impasto omogeneo/glazed homogeneous porcelain stoneware
thickness 6 mm

*misure nominali/nominal sizes



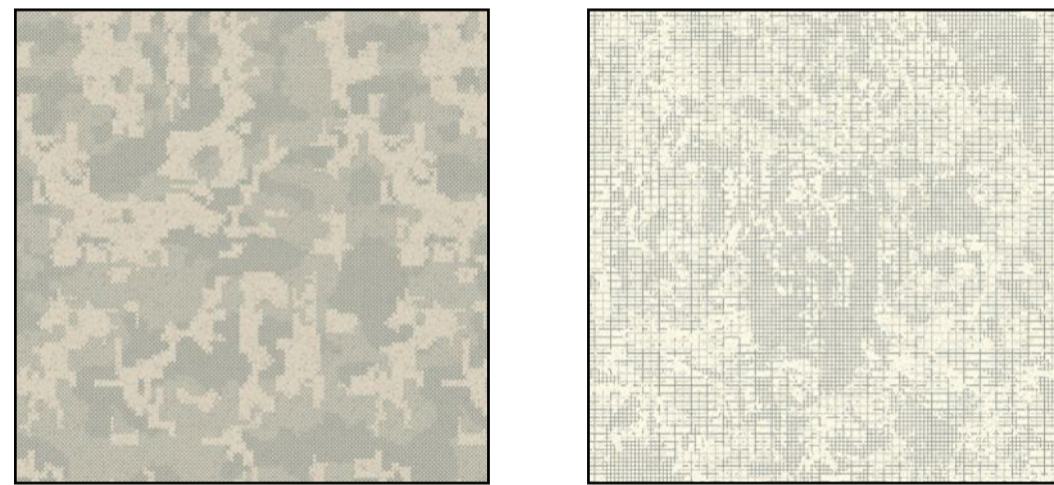
Battiscopa/Skirting
 3,8-120 cm / * 2"-47"



Stucco/Grout:
 Bianco 50

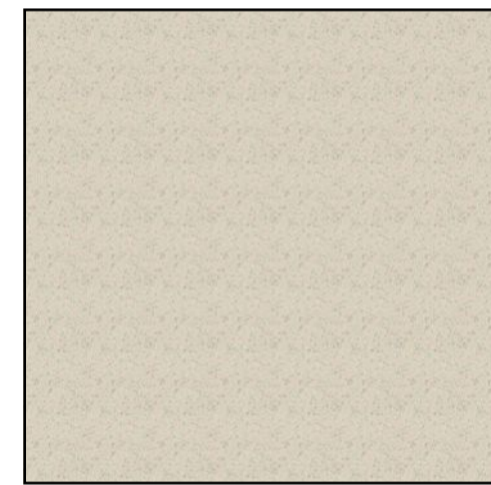
Nube
 120-240 cm / * 47"-94"

Grid
 120-240 cm / * 47"-94"



Nube
 120-120 cm / * 47"-47"

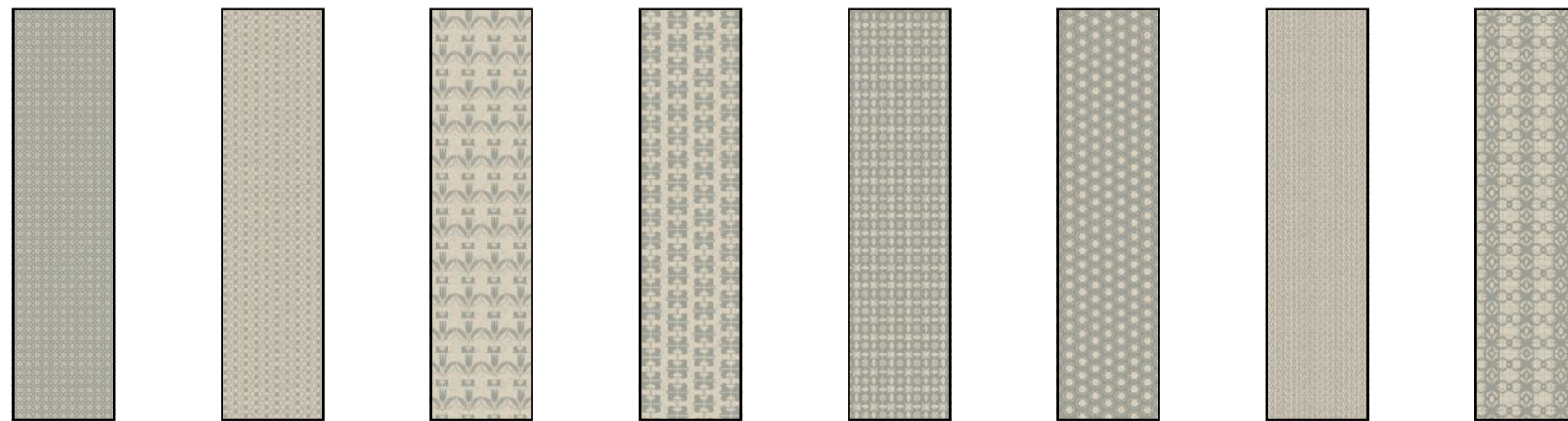
Grid
 120-120 cm / * 47"-47"



Base
 120-120 / * 47"-47"



Base
 30-120 / * 12"-47"



Bouclé
 30-120 cm
 * 12"-47"

Daphne

Liberty

Nouveau

Poppy

Rounded

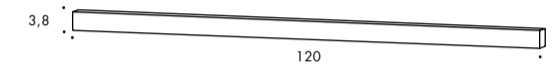
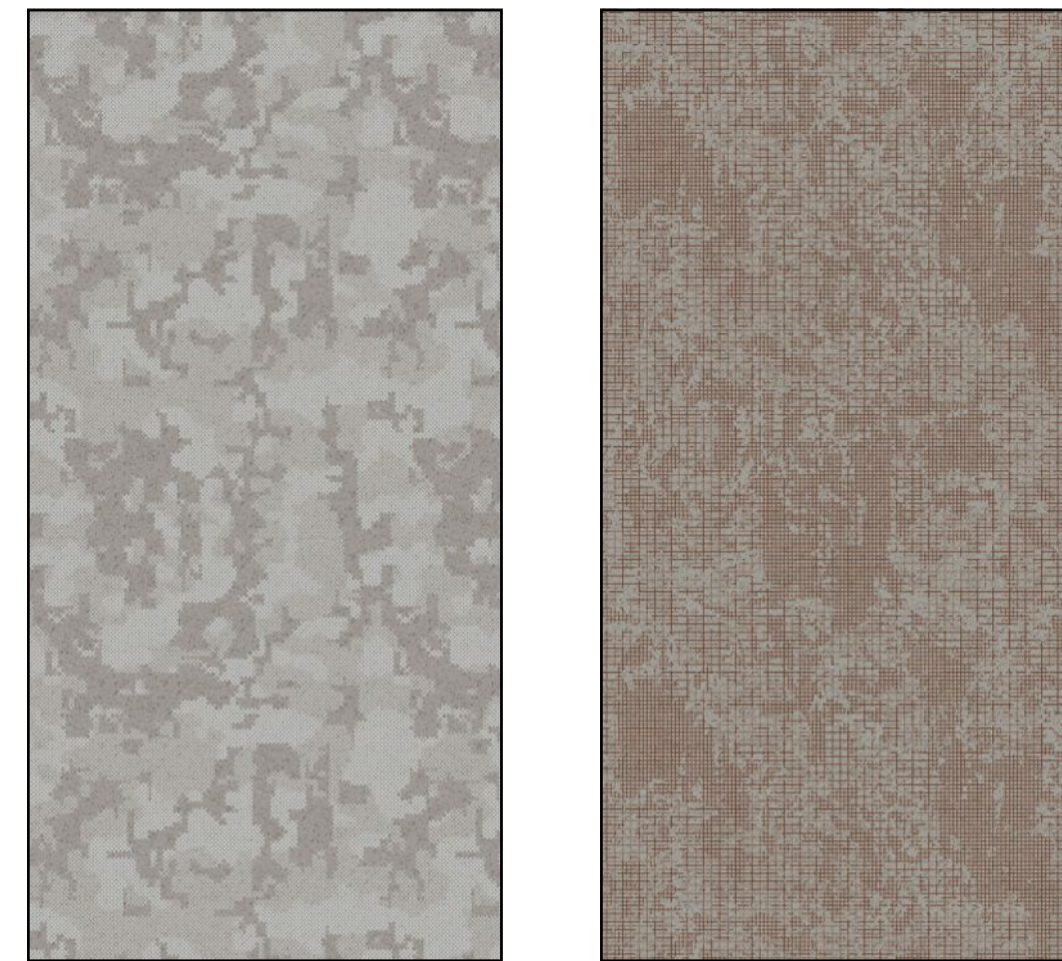
Scarabeo

Stitch



Pattern zoom details

Cover Grey



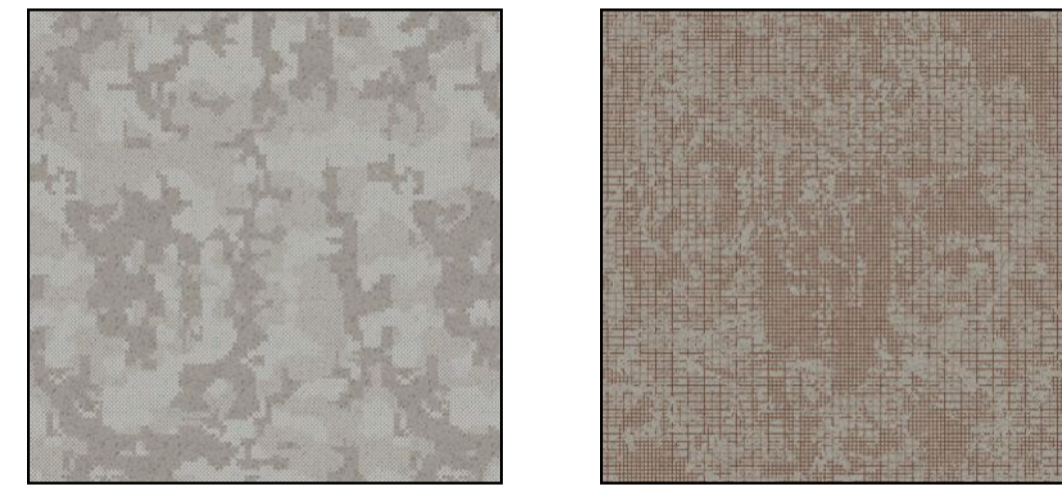
Battiscopa/Skirting
 3,8-120 cm / * 2"-47"



Stucco/Grout:
 Grey 76

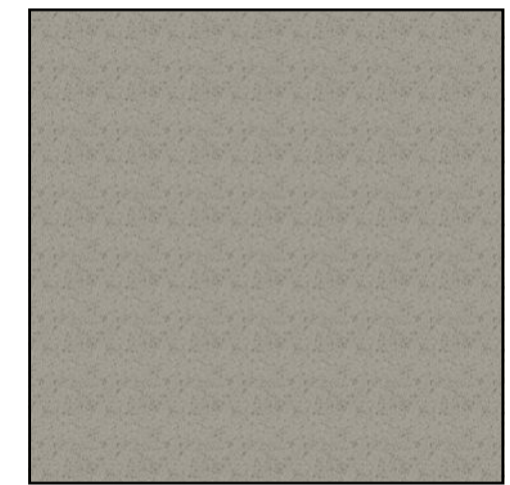
Nube
 120-240 cm / * 47"-94"

Grid
 120-240 cm / * 47"-94"



Nube
 120-120 cm / * 47"-47"

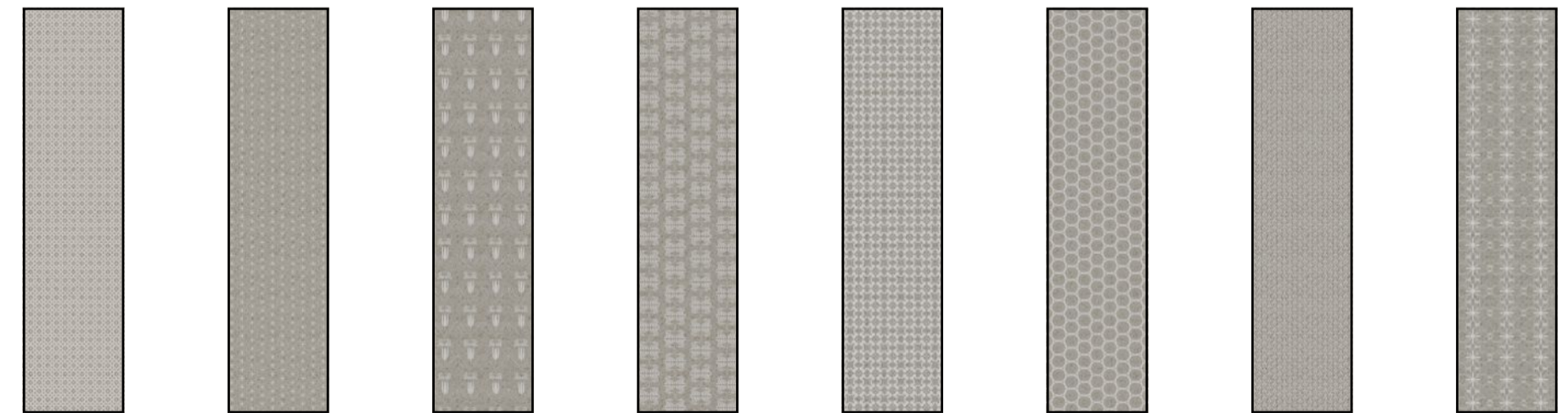
Grid
 120-120 cm / * 47"-47"



Base
 120-120 / * 47"-47"



Base
 30-120 / * 12"-47"



Bouclé
 30-120 cm
 * 12"-47"

Daphne

Liberty

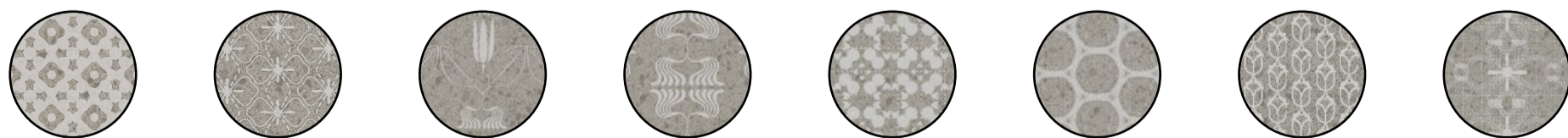
Nouveau

Poppy

Rounded

Scarabeo

Stitch



Pattern zoom details

Cover Black



Nube
120-240 cm / * 47"-94"



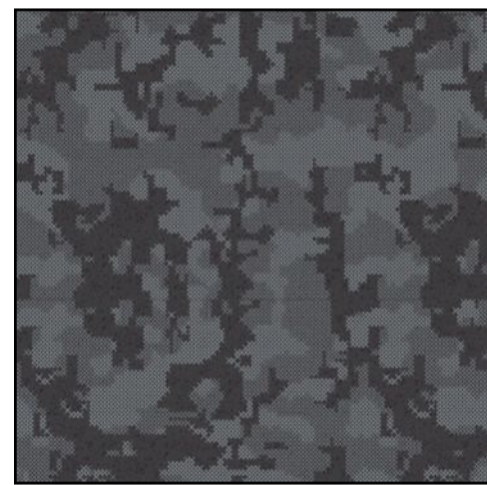
Grid
120-240 cm / * 47"-94"



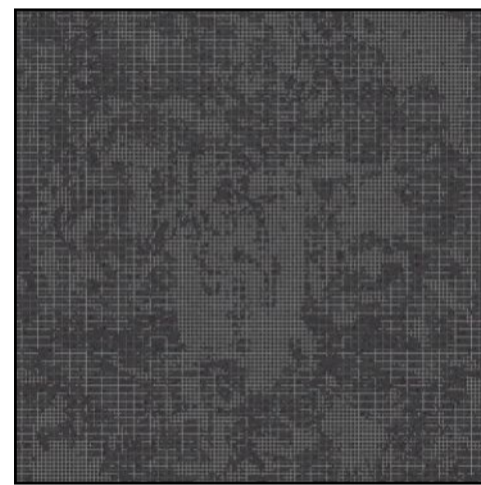
Battiscopa/Skirting
3,8-120 cm / * 2"-47"



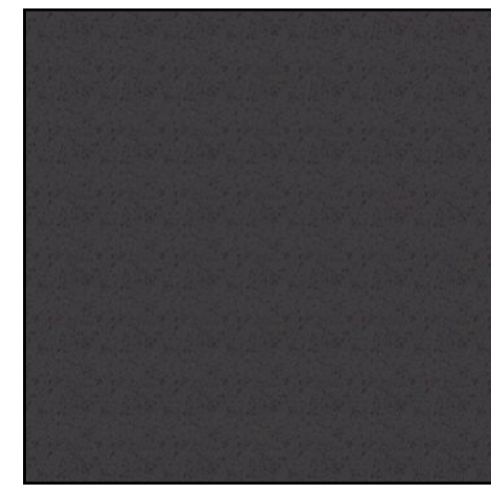
Stucco/Grout:
Nero 06



Nube
120-120 cm / * 47"-47"



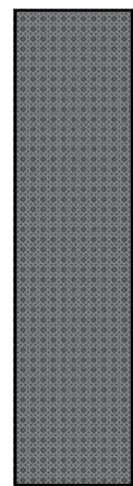
Grid
120-120 cm / * 47"-47"



Base
120-120 / * 47"-47"



Base
30-120 / * 12"-47"



Bouclé
30-120 cm
* 12"-47"



Daphne



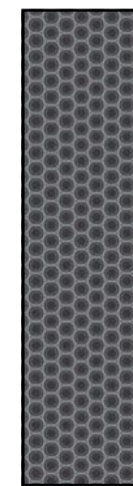
Liberty



Nouveau



Poppy



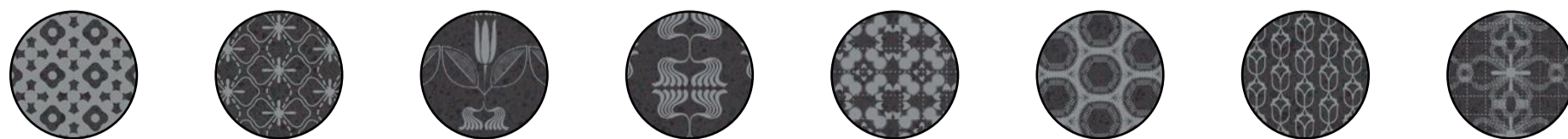
Rounded



Scarabeo



Stitch



Pattern zoom details

| NORMA STANDARD | CARATTERISTICHE FEATURES | VALORE PRESCRITTO VALUE REQUIRED | COVER |
|----------------|--------------------------------------------------------------------|-------------------------------------------------------|-----------------------------------------|
| ISO 10545/2 | DIMENSIONI/SIZES | | |
| | lunghezza e larghezza/ length and width | ± 0,6% | Conforme In conformity with standard |
| | spessore/thickness | ± 5% | |
| | rettezza degli spigoli/ straightness of edges | ± 0,5% | |
| | ortogonalità/wedging planarità/flatness | ± 0,5% | |
| ISO 10545/3 | assorbimento d'acqua/ water absorption | < 0,5% | conforme in conformity with standard |
| ISO 10545/6 | resistenza all'abrasione profonda resistance to deep abrasion | ≤ 175mm ³ | conforme in conformity with standard |
| ISO 10545/9 | resistenza agli sbalzi termici resistance to thermal shock | nessuna alterazione visibile no visible alteration | resiste resistant |
| ASTM C484 | | no samples must show visible defects | unaffected |
| ISO 10545/12 | resistenza al gelo frost resistance | nessuna alterazione visibile no visible alteration | resiste resistant |
| ISO 10545/13 | resistenza agli attacchi chimici resistance to chemical attacks | nessuna alterazione visibile no visible alteration | resiste resistant |
| DIN 51130-04 | | valori medi | |
| | | 6÷10° | R9 |
| | | 10÷19° | R10 |
| | | 19÷27° | R11 |
| | | 27÷35° | R12 |
| | > 35° | R13 | |
| DCOF | | > 0,42 | 0,62 |

Sistema produttivo con certificazione ambientale ISO 14000 e ISO 9001
Environmental management system ISO 14000 and ISO 9001



Packing

| FORMATO SIZE | PZ-MQ PCS-SQM | PZ-SCAT. PCS-BOX | MQ-SCAT. SQM-BOX | SCAT.-PAL. BOX-PAL. | KG-SCAT. KG-BOX | KG-PAL. KG-PAL. | MQ-PAL. SQMS-PAL. |
|--------------|---------------|------------------|------------------|---------------------|-----------------|-----------------|-------------------|
| 120-240 cm | 0,35 | 1 | 2,88 | 22 | 39 | 858 | 63,36 |
| 120-120 cm | 0,69 | 2 | 2,88 | 20 | 39,5 | 790 | 57,6 |
| 30-120 cm | 2,78 | 4 | 1,44 | 44 | 19,8 | 871,2 | 63,36 |

MUTINA.IT

Follow us on

