

Crayon

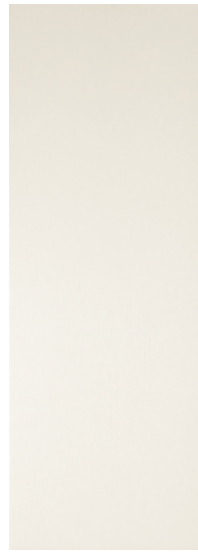
31,6X90 / 12,5"X36"

CRAYON SILVER RECT. 31,6X90. KENTIA SILVER RECT. 31,6X90. AVALON BLANCO RECT. 20,5X147,5.



Crayon

31,6X90 / 12,5"X36"



CRAYON WHITE RECT.
31,6X90 / 12,5"X36"
T18/M



KENTIA WHITE RECT.
31,6X90 / 12,5"X36"
T04/M



CRAYON GREEN RECT.
31,6X90 / 12,5"X36"
T18/M



KENTIA GREEN RECT.
31,6X90 / 12,5"X36"
T04/M



DECOR SET(2) VERGEL
31,6X90 / 12,5"X36" T42/P



CRAYON SILVER RECT.
31,6X90 / 12,5"X36"
T07/M



KENTIA SILVER RECT.
31,6X90 / 12,5"X36"
T45/M



CRAYON BRONZE RECT.
31,6X90 / 12,5"X36"
T07/M



KENTIA BRONZE RECT.
31,6X90 / 12,5"X36"
T45/M



INSERTO CRAYON
BRONZE
10X14 / 4"X5,5"
B05/P



CENEFA CRAYON
BRONZE
8X31,6 / 3"X12,5"
T15/P



ZOCALO CRAYON
BRONZE
12X31,6 / 5"X12,5"
T17/P

CARACTERÍSTICAS TÉCNICAS · TECHNICAL CHARACTERISTICS & PACKING



PASTA BLANCA / WHITE BODY / PÂTE BLANCHE



BRILLO / SHINE / BRILLANT



ASPECTO UNIFORME / UNIFORM APPEARANCE / APPARENCE UNIFORME



REVESTIMIENTO / WALL TILE / FAÏENCE



RECTIFICADO /RECTIFIED / RECTIFIÉ

CRAYON WHITE RECT 31,6X90, DECOR SET(2) VERGEL 31,6X90, ALABAMA QUERCIA RECT. 20X120.



FORMATO PZAS	PZS/CAJA TILES/BOX PIÈCES/BOITE	M2/CAJA SQM/BOX MÈTRES/BOITE	KG/CAJA KG/BOX KG/BOITE	CAJAS/PALLET BOXES/PALLET BOITES/PALETTE	M2/PALLET SQM/PALLET MÈTRES/PALETTE	KG/PALLET KG/PALLET MÈTRES/PALETTE
31,6X90	4	1.137	21.2	48	54.60	1017