

**Croix Sand**  
33,3 cm x 100 cm  
**Dayton Sand**  
33,3 cm x 100 cm  
**Dayton Sand**  
59,6 cm x 59,6 cm



# Dayton

## Croix

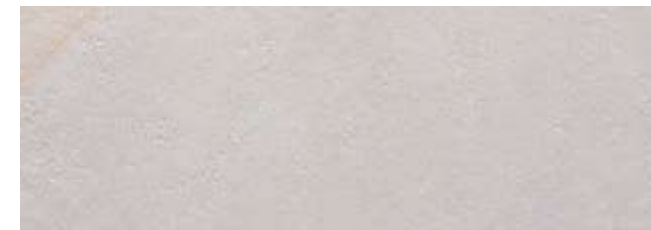
Revestimiento Monoporosa Rectificado / Rectified Wall Tiles



**DAYTON GRAPHITE**  
33,3 cm x 100 cm x 0,92 cm · 13" x 40" 100295151 G271  
**PERFIL DAYTON GRAPHITE**  
1,5 cm x 33,3 cm · 6" x 13" 100295437 G77  
Butech: Colorstuk Rapid Cemento 100236449



**CROIX GRAPHITE**  
33,3 cm x 100 cm x 0,92 cm · 13" x 40" 100295141 G271  
Butech: Colorstuk Rapid Cemento 100236449



**DAYTON SAND**  
33,3 cm x 100 cm x 0,92 cm · 13" x 40" 100295161 G271  
**PERFIL DAYTON SAND**  
1,5 cm x 33,3 cm · 6" x 13" 100295453 G77  
Butech: Colorstuk Rapid Beige 100236808



**CROIX SAND**  
33,3 cm x 100 cm x 0,92 cm · 13" x 40" 100295113 G271  
Butech: Colorstuk Rapid Beige 100236808

### EMBALAJE / PACKING

MODELO / MODEL	PZ/CJ	M2/CJ	*KG/CJ	CJ/PAL	M2/PAL	*KG/PAL	BUTECH
Dayton	5	1,66	28,55	44	73,28	1256,20	Fr-one n / One-flex Premium
Croix	5	1,66	28,55	44	73,28	1256,20	
Perfil 1,5 cm x 33,3 cm	30	0,30	3,72	42	12,59	156,24	

\*valores aproximados. \*approximated values.



PAVIMENTO COMBINABLE: SERIE DAYTON 59,6 cm x 59,6 cm / 24" x 24"  
FLOOR TILES COMBINATIONS: DAYTON SERIE 59,6 cm x 59,6 cm / 24" x 24"