

Dixon

Porcelain tiles

Dixon

White body wall tiles

DIXON | DIXON-B_32*90 AMBOY-B_32*90 D.DIXON-B D.DIXON-B_60,7*60,7/R



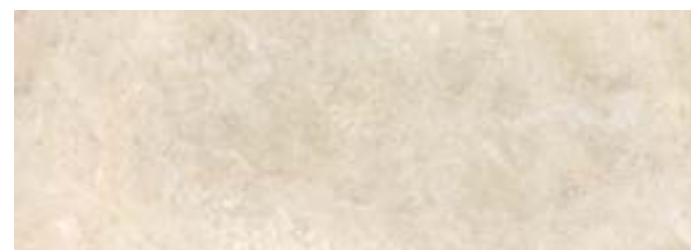
DIXON | DIXON-S_32*90/R AMBOY-S_32*90/R DIXON-S_90,7*90,7/R

Dixon

White body wall tiles



DIXON S



DIXON B



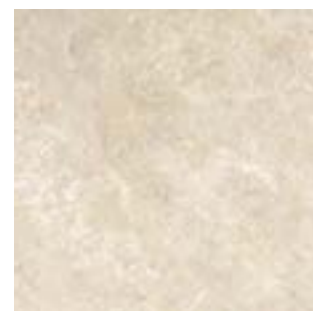
AMBOY S



AMBOY B



DIXON S



DIXON B



07021 ACERO/90 _ 1,5 * 90 cm | 9/16 * 3 9/16" _ P30



20347 L. IRON ANTHRACITE _ 1,5 * 90 cm | 9/16 * 3 9/16" _ P38



20348 L. IRON MOCCHA _ 1,5 * 90 cm | 9/16 * 3 9/16" _ P38



* 17974 L. ANDROS/R _ 0,5 * 90 cm | 3/16 * 3 9/16" _ P53

* No se aconseja su uso en zonas con presencia de vapor.
Not suitable for environments where water vapour is present.



20 * 21,5 cm | 7 7/8 * 8 7/16"



* D. TENON BROWN | 20338 | P50

20 * 21,5 cm | 7 7/8 * 8 7/16"



* D. TENON GREY | 20337 | P50

* Se comercializan en conjuntos de 2 piezas. Precio por pieza individual.
They are sold in groups of 2 pieces. Price to the individual piece.
Disponibles par ensembles de 2 pieces. Prix par piece individuelle.
Preis versteht sich pro Stück, abgabemenge nur als Zweier-set.
Продаются в наборах из 2 штук. Цена за одну штуку.



D. STONY B



D. STONY G

30 * 30 cm | 11 13/16 * 11 13/16"

	NATURAL PRICE CODE P51
G	20341
B	20456

MATCHING FLOOR COLLECTIONS DIXON_PORCELAIN | Pag. 97

DIXON

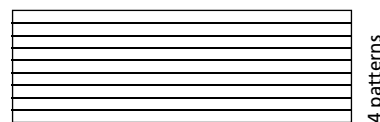


20 patterns

32 * 90 * 1,05 cm | 12 5/8 * 35 7/16 * 7/16"

RECTIFIED	NATURAL PRICE CODE BN29
S	19660
B	19659

AMBOY



4 patterns

32 * 90 * 1,05 cm | 12 5/8 * 35 7/16 * 7/16"

RECTIFIED	NATURAL PRICE CODE BN36
S	19680
B	19679

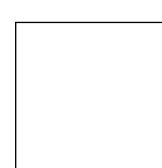
33 * 91 * 1,05 cm | 13 * 35 13/16 * 7/16"

	NO RECTIFIED	NATURAL PRICE CODE BN21
S		19666
B		19665

33 * 91 * 1,05 cm | 13 * 35 13/16 * 7/16"

	NO RECTIFIED	NATURAL PRICE CODE BN25
S		19678
B		19677

DIXON

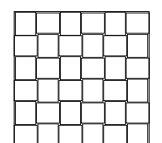


54 patterns

60,7 * 60,7 * 1 cm | 23 7/8 * 23 7/8 * 3/8"

	RECTIFIED	NATURAL PRICE CODE BN33
S		20600
B		20601

D.DIXON



30 * 30 cm | 11 13/16 * 11 13/16"

	NO RECTIFIED	NATURAL PRICE CODE P53
S		20359
B		20360

CARACTERÍSTICAS TÉCNICAS TECHNICAL CHARACTERISTICS		
joint 	wall tiles 	matt
diferent shades 	shade variation 	various graphics

EMBALAJE PACKING								
Formato Sizes	Cajas Boxes			Pallet			Cont./20' 21500 kg.	Cont./20' 24000 kg.
cm	Piezas	m ² / sq.m	kg	Cajas	m ² / sq.m	kg	Tamaño cm aprox.	m ² / sq.m
32 * 90 * 1,05	4	1,15	20,90	56	64,51	1195,40	120 * 80 * 105	1160,29
33 * 91 * 1,05	4	1,20	21,80	51	61,26	1136,80	120 * 80 * 106	1158,62
inch	Units	ft ²	lb	Boxes	ft ²	lb	Sizes inch approx.	ft ²
12 5/8 * 35 7/16 * 7/16	4	12,40	45,98	56	694,40	2629,88	47 1/4 * 31 1/2 * 41 5/16	12489,22
13 * 35 13/16 * 7/16	4	12,93	47,96	51	659,41	2500,96	47 1/4 * 31 1/2 * 41 3/4	12471,24