



## COLLECTION **FORUM**

32X65 CM / 12,6"xx25,6"  
33,3X66,6 CM / 13,1"x26,2"  
59X59 CM / 23,2"x23,2"  
60x60 CM / 23,6"x23,6"  
62X120 CM / 24,4"x47,2"

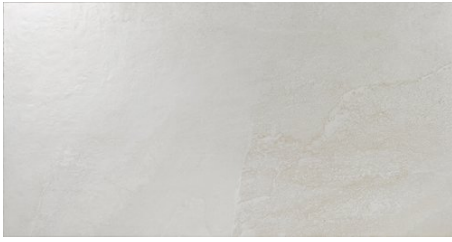


# FORUM



62x120 / 24,4"x47,2"

---



FORUM CREMA



FORUM GRIS



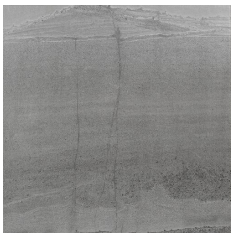
FORUM MOKA



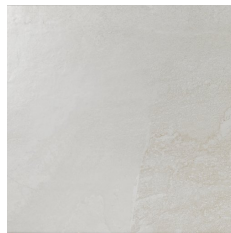
FORUM PERLA

60x60 / 23,6"x23,6"

---



FORUM GRIS



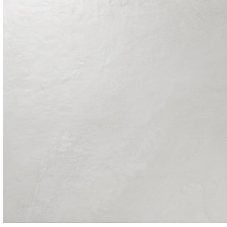
FORUM MARFIL



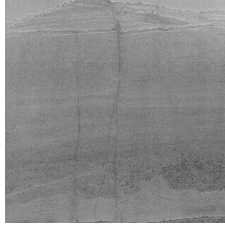
FORUM PERLA

**59x59 / 23,2"x23,2"**

---



**FORUM CREMA**



**FORUM GRIS**



**FORUM MOKA**



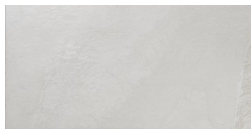
**FORUM PERLA**

**33,3x66,6 / 13,1"x26,2"**

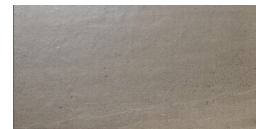
---



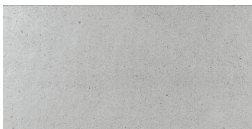
**FORUM GRIS**



**FORUM MARFIL**



**FORUM MOKA**



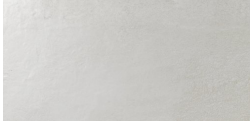
**FORUM PERLA**

# FORUM

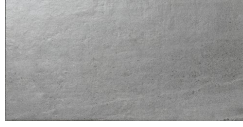


32x65 / 12,6"xx25,6"

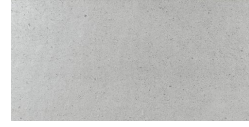
---



**FORUM CREMA**



**FORUM GRIS**



**FORUM PERLA**

## TECHNICAL FEATURES

## PORCELAIN TILE



WALL TILE



FLOOR TILE



PORCELAIN



RECTIFIED



RESISTENCIA HELADA



DIGITAL PRINT

## PACKING LIST

	Pieces	m2	kg	Cajas		m2		kg	
				Pallet	Europalet	Pallet	Europalet	Pallet	Europalet
32X65	5	1,04	23,65	40	-	41,6	-	946	-
33,3X66,6	5	1,11	23,45	48	-	53,28	-	1125,46	-
59X59	3	1,04	23,65	48	-	49,92	-	1135,2	-
60x60	3	1,08	25,6	30	-	32,4	-	768	-
62X120	2	1,49	38,1	30	-	44,7	-	1143	-

\* Indicated weights are approximated

The colors reproduced in this catalogue are purely illustrative and can differ from the original piece. The company declines any responsibility.

Price codes and product codes should be checked, since there may be typographical errors. We always recommend consulting the website or the commercial as the products could undergo price code, format or packing changes.

## TECHNICAL FEATURES / CARACTERÍSTICAS TÉCNICAS

## PORCELAIN TILES / PORCELÁNICO

	Test standard Norma de ensayo	Items Unidades	Product standard Requisito	Average values Valores promedio
<b>DIMENSIONS AND SUPERFICIAL ASPECT / DIMENSIONES Y ASPECTO SUPERFICIAL</b>				
	UNE-EN-ISO-10545		UNE-EN-14411	
Length and width / Longitud y anchura	Parte 2	%	± 0,6	Cumple
Thickness / Espesor	Parte 2	%	± 5	Cumple
Straightness of sides / Rectitud de lados	Parte 2	%	± 0,5	Cumple
Rectangularity / Ortogonalidad	Parte 2	%	± 0,5	Cumple
Surface planarity / Planitud de superficie	Parte 2			
Central curvature / Curvatura central		%	± 0,5	Cumple
Lateral curvature / Curvatura lateral		%	± 0,5	Cumple
Warping / Alabeo		%	± 0,5	Cumple
Surface quality / Aspecto superficial	Parte 2	%	Min 95	Cumple
<b>PHYSICAL PROPERTIES / PROPIEDADES FÍSICAS</b>				
Water absorption / Absorción de agua	Parte 3	%	E ≤ 0,5	Cumple
Breakage strenght / Carga de rotura	Parte 4	N	≥ 1300	Cumple
Bending strenght / Resistencia a la flexión	Parte 4	N/mm <sup>2</sup>	≥ 35	Cumple
Impact resistance / Resistencia al impacto	Parte 5		No exigida	-
<b>Abrasion resistance / Resistencia a la abrasión</b>				
Deep abrasion / Abrasión profunda (UGL: No esmaltadas)	Parte 6	mm <sup>2</sup>	No aplica	-
Surface abrasion / Abrasión superficial (GL: Esmaltadas)	Parte 7	PEI	Exigida	Según modelo
Thermal expansion coeficient / Coeficiente de dilatación térmica lineal	Parte 8	°C <sup>-1</sup>	No exigida	-
Resistance to thermal shock / Resistencia al choque térmico	Parte 9		No exigida	-
Resistance to cracking / Resistencia al cuarteo (GL: Esmaltadas)	Parte 11		Exigida	Resiste
Frost resistance / Resistencia a la helada	Parte 12		Exigida	Cumple
<b>Friction coeficient / Deslizamiento</b>				
Coefficient of friction / Coeficiente de fricción (Tortus)	Parte 17		No aplica	-
Pendulum / Péndulo	ENV 12.633		No aplica	-
Ramp (boots) / Rampa (botas)	DIN 51.130		No aplica	-
Ramp (barefoot) / Rampa (pies descalzos)	DIN 51.097		No aplica	-
<b>CHEMICAL PROPERTIES / PROPIEDADES QUÍMICAS</b>				
Resistance to staining / Resistencia a las manchas	Parte 14		≥ 3	5
Resistance to chemical attack / Resistencia a productos químicos	Parte 13			
Resistance to low concentration acids / Resistencia a ácidos de baja concentración			No exigida	GLA
Resistance to low concentration alkalis / Resistencia a álcalis de baja concentración			No exigida	GLA
Resistance to high concentration acids / Resistencia a ácidos de alta concentración			No exigida	GHA
Resistance to high concentration alkalis / Resistencia a álcalis de alta concentración			No exigida	GHA
Resistance to domestic products and salts for swimming pools / Resistencia a productos domésticos y sales para piscinas			≥ GB	GA
Emission of lead and cadmium / Emisión de plomo y cadmio	Parte 15		No exigida	-
<b>SECURITY / SEGURIDAD</b>				
Euroclass. Fire resistance / Euroclase. Resistencia al fuego	Decisión 96/603/CE Modificada		-	A1-A1 <sub>fl</sub>