





DRINKING FOUNTAINS




Drinking fountains are commonly found in leisure facilities, offices, schools and other commercial buildings. The range from Franke Sissons provides an option suitable for any application; wall hung or floor standing, with or without bottle filler, our new round drinking fountain with water filter and chilled options too; providing an unlimited amount of fresh chilled water. Manufactured from stainless steel, this range is both hard wearing and easy to install.

PRODUCT FEATURES

- Wall hung or floor standing in a number of different models
- Filtered and chilled variants available
- Easy to install
- Replacement bubblers, bottle fillers and water filters available

DRINKING FOUNTAINS

DRINKING FOUNTAINS

IMAGE	ITEM NUMBER	TYPE/MODEL
		
		
		

Centinel wall hung drinking fountain

Drinking water fountains are manufactured from grade 1.4301 (304) austenitic stainless steel, material thickness 1.2mm, supplied complete with 19mm waste and water bubbler. The wall mounted model is simply fixed to the wall using a joggle strip and integral mounting brackets.

G20100N

Centinel drinking fountain wall hung
310x264x135mm

G20109N

Centinel drinking fountain wall hung with
bottle filler
310x264x135mm

+ Spares

F1037

Bubbler

F1042

Bottle Filler



Wall hung/floor standing drinking fountain

Drinking water fountains are manufactured from grade 1.4301 (304) austenitic stainless steel, material thickness 1.2mm, supplied complete with 19mm waste and water bubbler. The wall mounted model is simply fixed to the wall using a joggle strip and integral mounting brackets.

The pedestal version is fixed in the same way as the wall mounted version but incorporates extra fixing points within the pedestal support. No screws or wall plugs supplied.

ANMX300

Drinking fountain wall hung
312x258x200mm

ANMX306

Drinking fountain wall hung with bottle filler
312x258x487mm

ANMX301

Drinking fountain floor standing
312x258x840mm

ANMX307

Drinking fountain floor standing with bottle
filler 312x258x1126mm

+ Spares

F1037

Bubbler

F1042

Bottle Filler

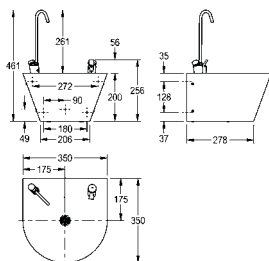
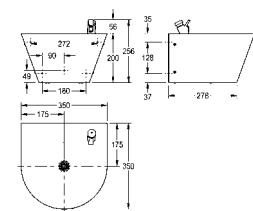
DRINKING FOUNTAINS

DRINKING FOUNTAINS

IMAGE

ITEM NUMBER

TYPE/MODEL



Easy fit wall hung drinking fountain with water filter

Manufactured from 1.2mm grade 304 stainless steel. Delivered complete with a choice of bubbler or bubbler and bottle filler, water filter as standard, (replacement required approximately every 6 months) fitted waste and low inlet P trap, plumbing connections and a secure access panel.

They are mounted to the wall using a bracket that is simply fixed to the wall. The drinking fountain then slides and hooks on and is then secured with screws at the sides.

ANMX330

Drinking fountain wall hung with bubbler and water filter 350x350x256mm

ANMX331

Drinking fountain wall hung with bubbler, bottle filler and water filter 350x350x256mm

+ Spares

B9094

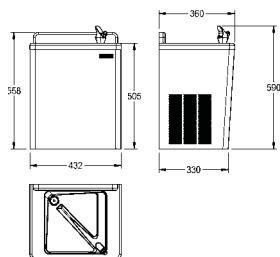
Chlorine Water Filter

F1037

Bubbler

F1042

Bottle Filler



Wall hung/floor standing chilled drinking fountain

The water coolers and drinking fountains from Franke offer a low maintenance and reliable solution where chilled drinking water is required in commercial buildings. Available with or without a bottle filler, the products are connected direct to the water mains supply and supply an unlimited amount of chilled water which always has a fresh taste. The product requires 240V main electrical supply via a 3 pin plug socket.

The coolers are made from durable coated steel panels.

The products are provided with a chlorine based water filter as standard and this is recommended to be replaced every 6 months. Replacement filters are available from Franke Sissons.

An installation kit is included.

ANMX311

360x432x505mm wall hung unit with water filter

ANMX312

360x432x505mm wall hung unit with water filter and bottle filler

ANMX308

325x328x960mm floor standing unit with water filter

ANMX309

325x328x960mm floor standing unit with water filter and bottle filler

+ Spares

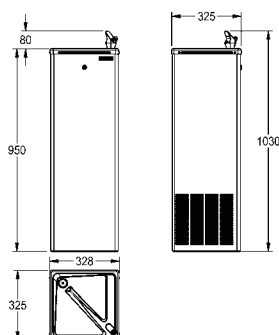
ANMX313

Chlorine water filter

+ Recommended

ANMX315

Breeam fixing kit for ANMX308/309



breeam