



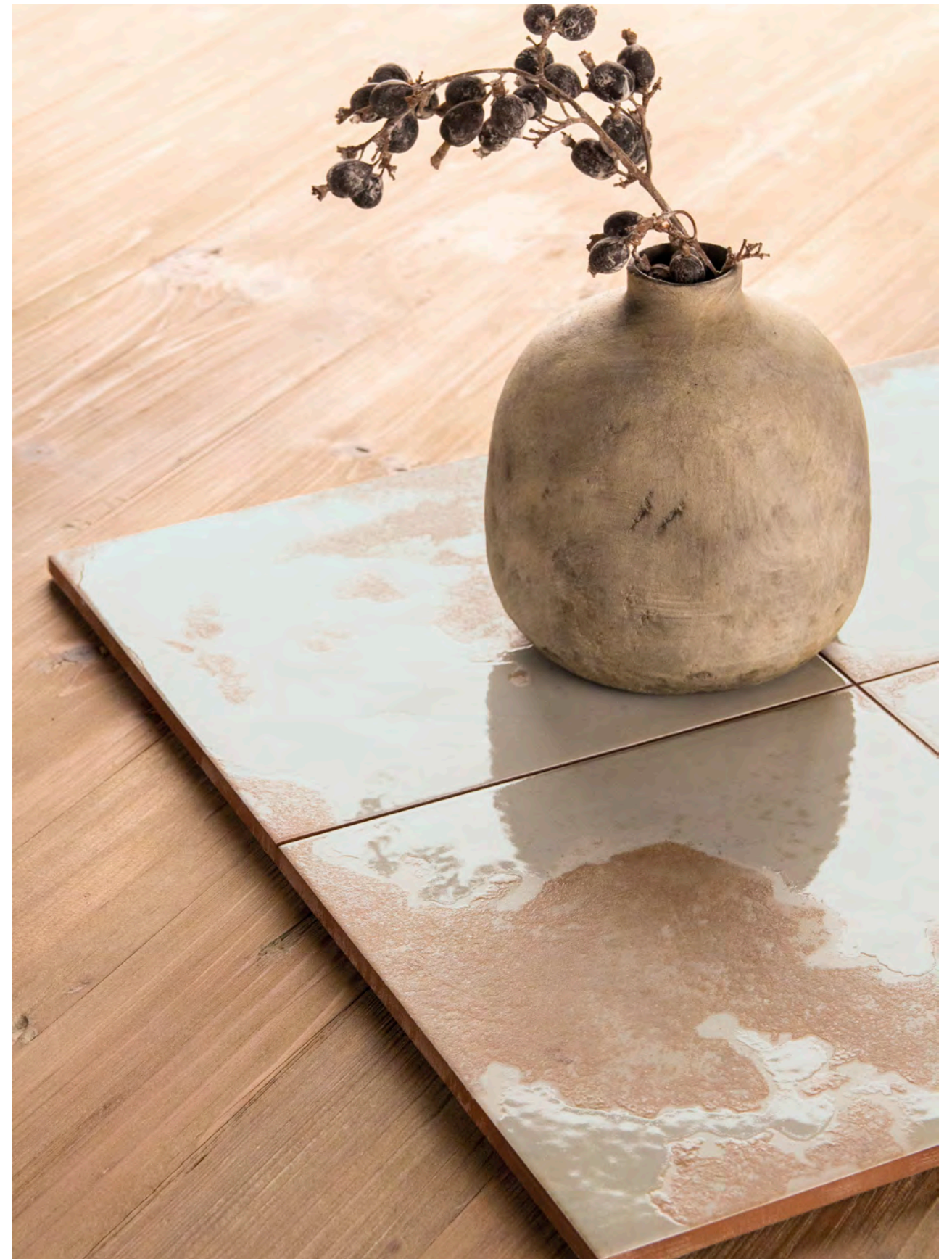
fs heritage single finished floor tile



FS HERITAGE SQUARE 45x45 LT



fs heritage single finished floor tile



FS HERITAGE WHITE 45x45 LT

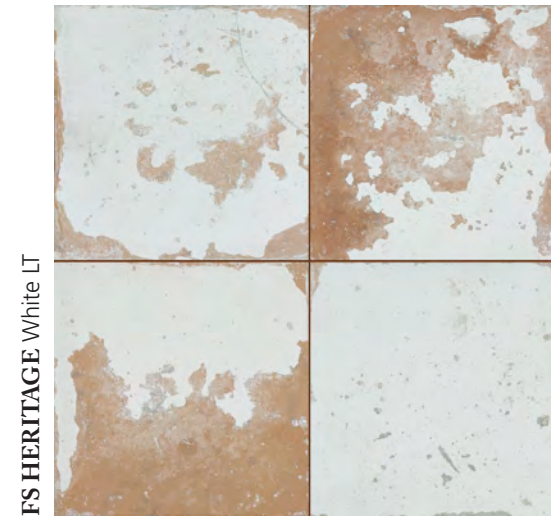
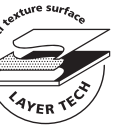
FS HERITAGE LEAVES 45x45 LT



FS HERITAGE ORNATE 45x45 LT

fs heritage

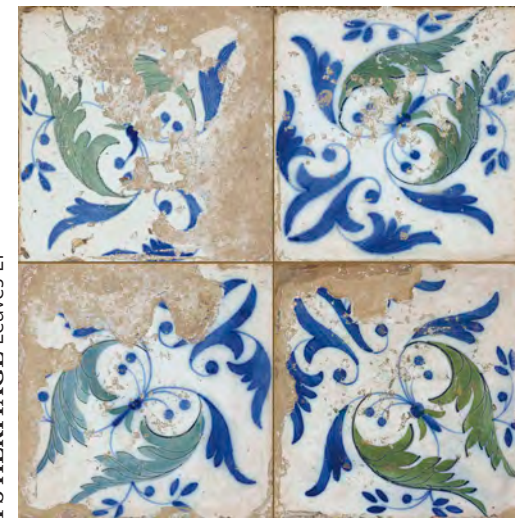
single finished floor tile



FS HERITAGE White LT



FS HERITAGE Ornate LT



FS HERITAGE Leaves LT



FS HERITAGE Square LT

FS HERITAGE



45 * 45 * 1,05 cm | 18 * 18"

| NO RECTIFIED | LAYER TECH |
|--------------|------------|
| | BN17 |
| LEAVES | 30895 |
| ORNATE | 30894 |
| SQUARE | 30893 |
| WHITE | 30892 |

CARACTERÍSTICAS TÉCNICAS | TECHNICAL CHARACTERISTICS

| | | | | | |
|-------|-----------|------------|-----------------|-----------------|------------------|
| joint | versatile | matt/gloss | diferent shades | shade variation | various graphics |
| | | | | | |

EMBALAJE | PACKING

(Los pesos aquí reflejados pueden sufrir ligeras variaciones en función del lote de producción. Weights shown here may slightly vary depending on the production lot.)

| Formato Sizes | Cajas Boxes | | | Pallet | | | | Cont./20' | Cont./20' |
|----------------------------|---------------|----------------------|--------|--------|----------------------|---------|---------------------------|-----------------|-----------------|
| | Piezas | m ² /sq.m | kg | Cajas | m ² /sq.m | kg | Tamaño cm aprox. | 21500 kg. | 24000 kg. |
| cm | | | | | | | | | |
| 45 * 45 * 1,05 | 5 | 1 | 23,139 | 66 | 66 | 1551 | 120 * 80 * 105 | 914,89 | 1021,28 |
| inch | Units | ft ² | lb | Boxes | ft ² | lb | Sizes inch approx. | ft ² | ft ² |
| 17 11/16 * 17 11/16 * 7/16 | 5 | 10,76 | 51,02 | 66 | 710,42 | 3419,96 | 47 1/4 * 31 1/2 * 41 5/16 | 9847,91 | 10993,02 |