

GRES FINE PORCELLANATO

# GEOBRICK

# GEOBRICK

Geobrick è la nuova collezione di pavimenti che Monocibec dedica alla progettazione delle aree outdoor. Le lastre in gres fine porcellanato presentano una specifica finitura grip la cui struttura favorisce l'utilizzo degli spazi esterni anche in condizioni climatiche non ideali, limitando il rischio di scivolamenti.

Geobrick is the new flooring collection that Monocibec dedicates to outdoor area design. The fine porcelain stoneware tiles present a specific grip finish whose structure helps use outdoors, even in non-ideal climatic conditions, reducing the risk of slipping.

★★★★★  
**MONOCIBEC**<sup>®</sup>  
FINCIBEC GROUP

GRES FINE PORCELLANATO  
FINE PORCELAIN STONEWARE



*pag.* **06**  
**BRUGES**

*pag.* **12**  
**VOLTERRA**

*pag.* **18**  
**SIENA**

*pag.* **24**  
**CANOSSA**

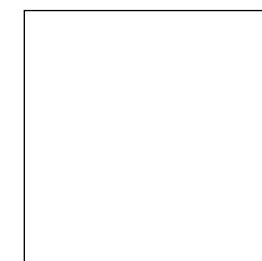
GEOBRICK

**GRES FINE PORCELLANATO**  
**FINE PORCELAIN STONEWARE**

**1 BORDO / EDGE . NATURALE / NATURAL**

**1 SUPERFICIE / SURFACE . GRIP / GRIP**

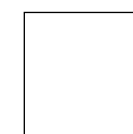
**4 FORMATI / SIZES**



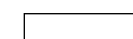
**50x50**



**25x50**



**25x25**



**6,2x25**



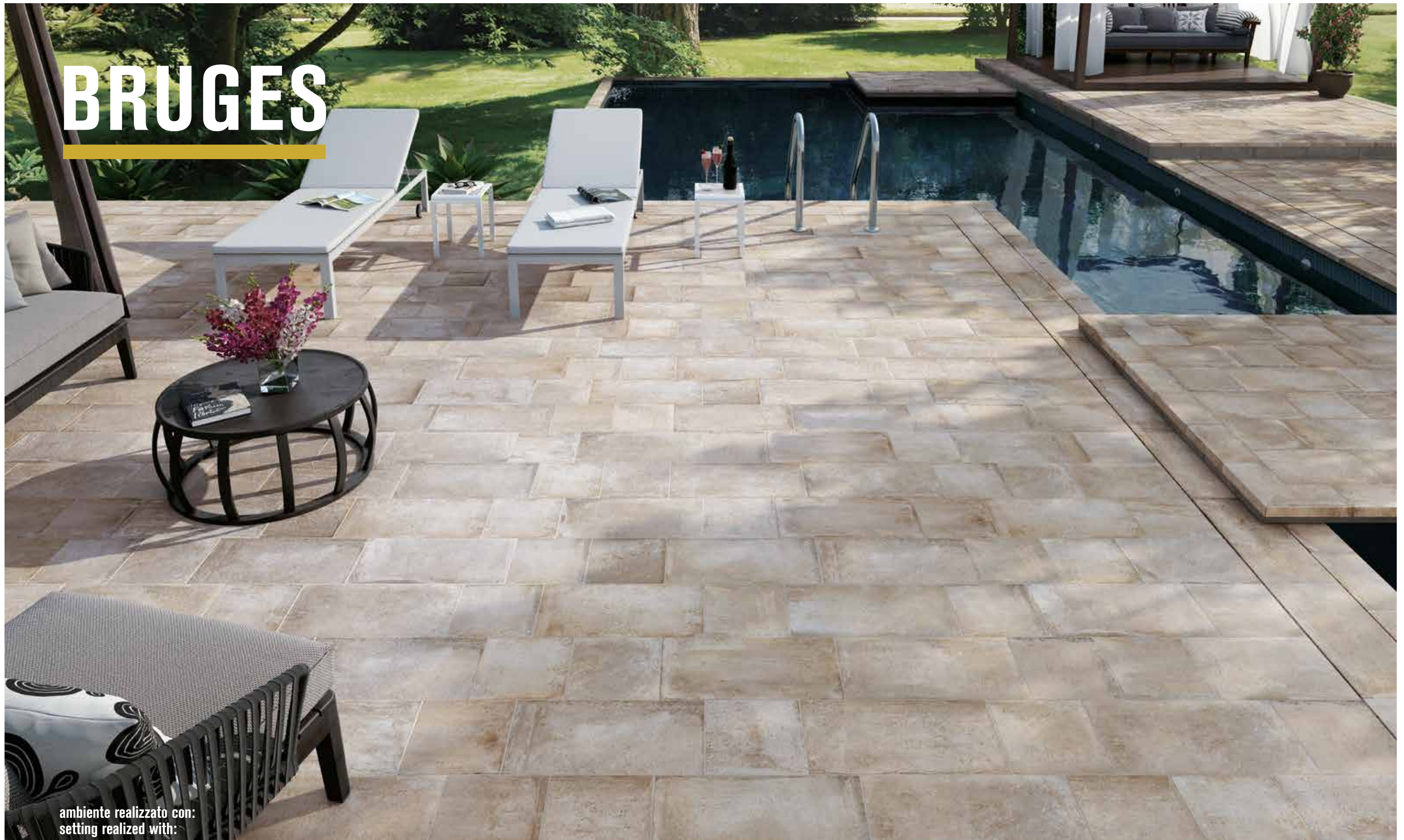


L'estetica, ispirata alle pavimentazioni realizzate con mattoni verniciati, e le colorazioni proposte sono studiate per creare le giuste armonie cromatiche con gli ambienti circostanti, in contesti urbani oppure circondati da aree verdi. Geobrick è una collezione dall'anima fortemente tecnica, pensata per offrire ai progettisti elevate prestazioni unite a risultati estetici di pregio.

The aesthetic, inspired by floors created using varnished bricks and the colours proposed were designed to create the right colour harmony with the surrounding environments, in urban contexts or surrounded by green areas. Geobrick is a collection with a strong technical soul, designed to offer planners high performance combined with valuable aesthetic results.



# BRUGES



ambiente realizzato con:  
setting realized with:

**bruges 25x50**  
**bruges 25x25**  
**pezzi speciali pools&wellness / pools&wellness special pieces**

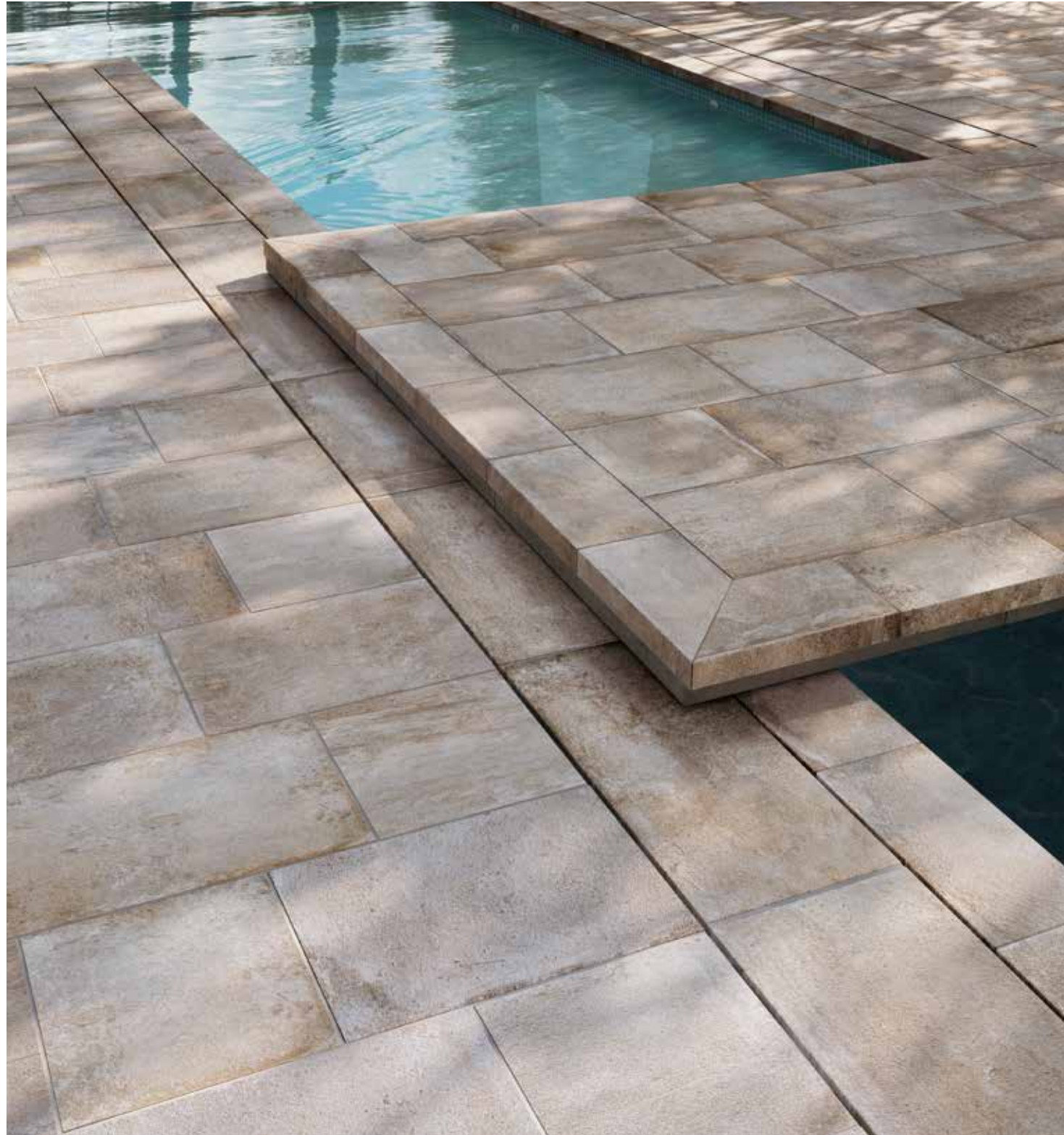




# BRUGES



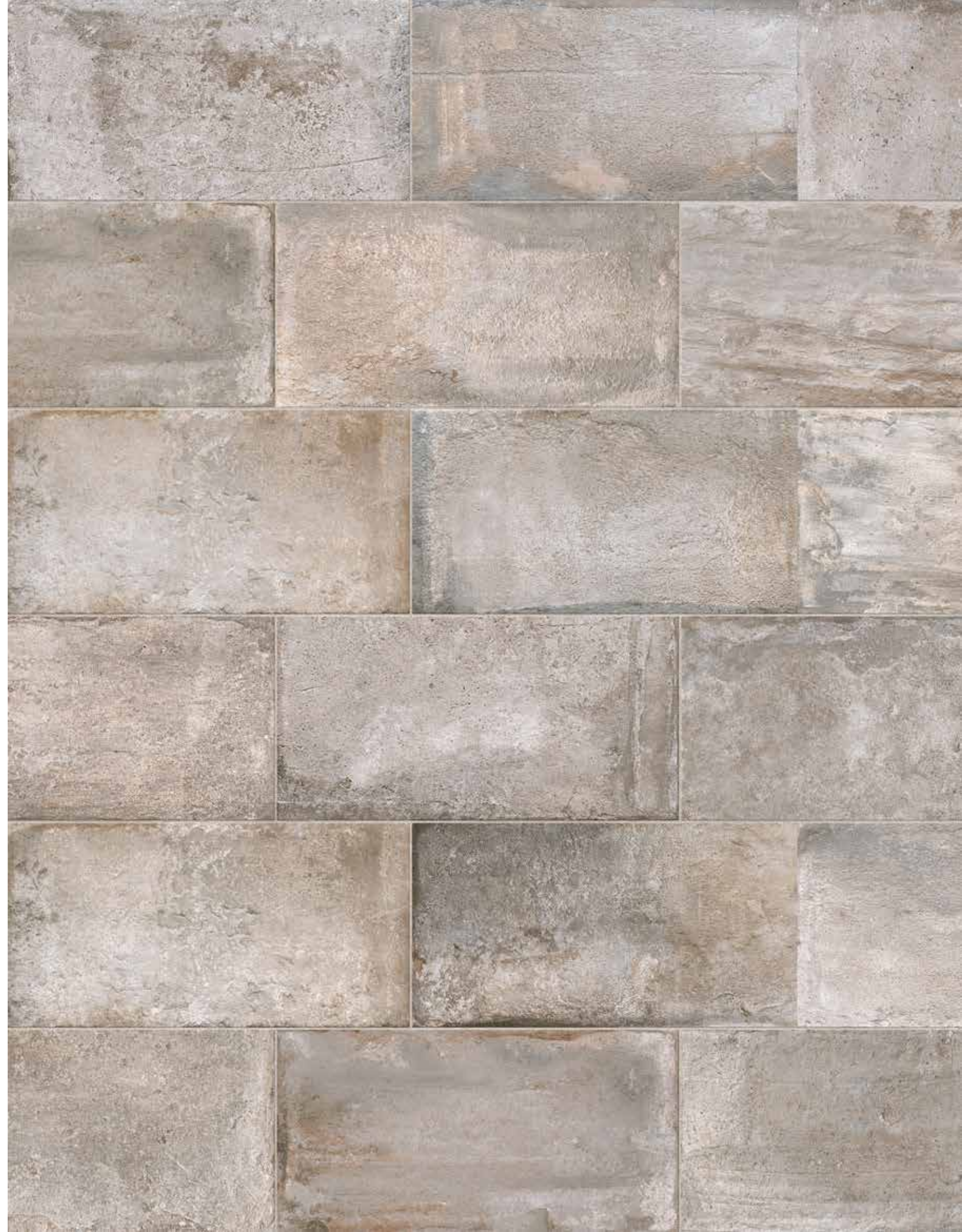




# BRUGES

★★★★★  
**MONOCIBEC**  
FINCIBEC GROUP

GRES FINE PORCELLANATO  
FINE PORCELAIN STONEWARE





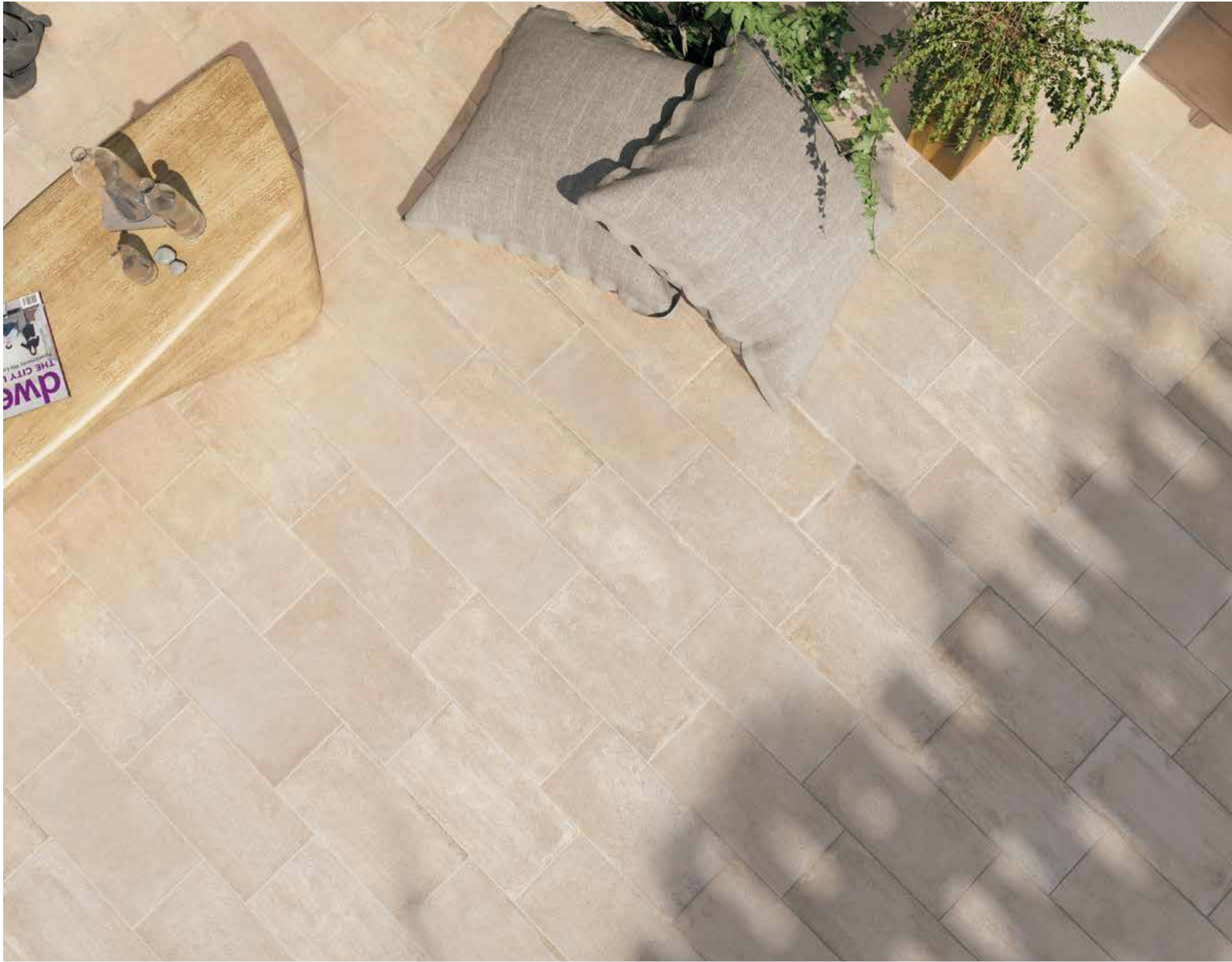
# VOLTERRA



ambiente realizzato con:  
setting realized with:

**volterra 25x50**  
**volterra mattoncino 6,2x25**





# VOLTERRA



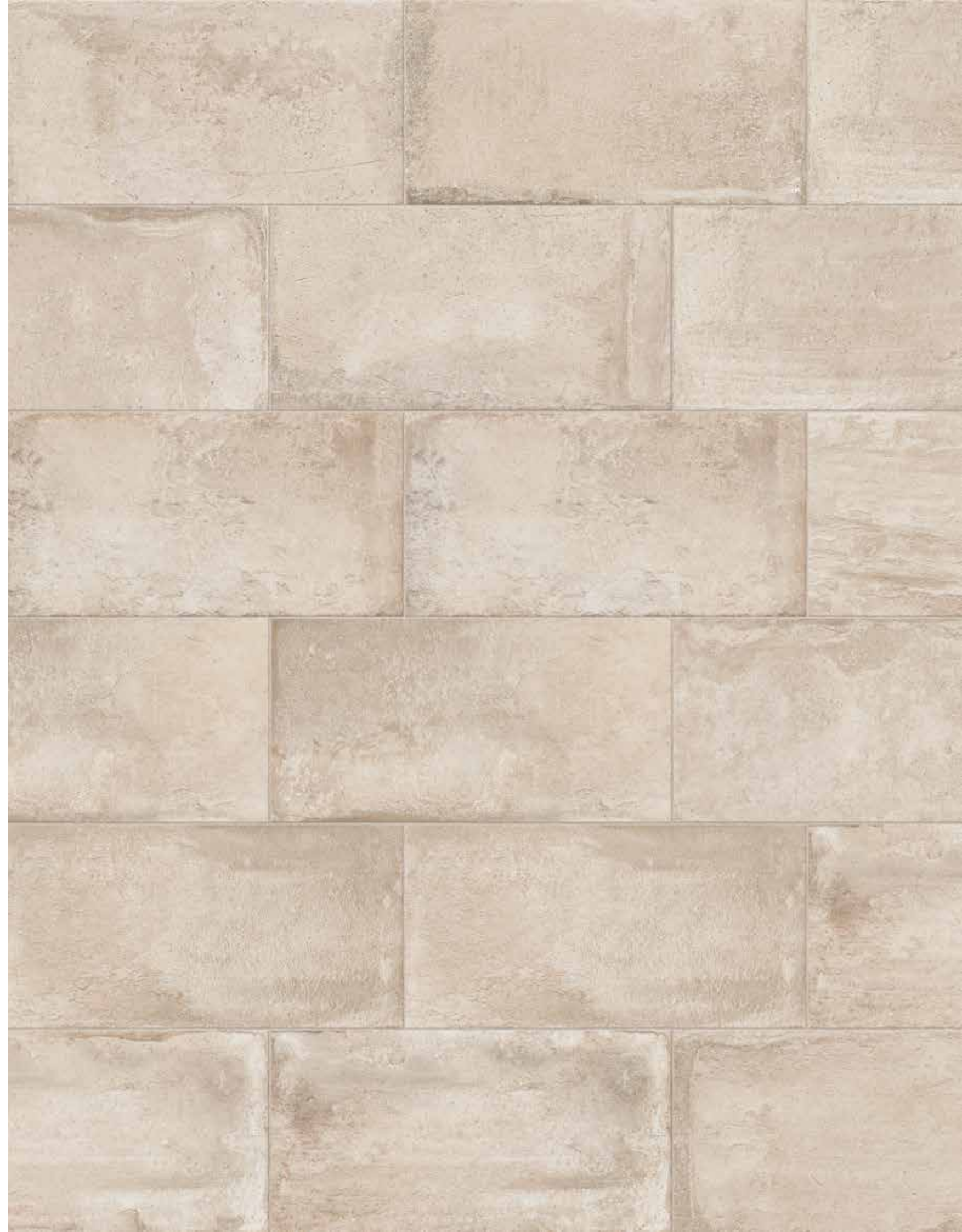




# VOLTERRA

★★★★★  
**MONOCIBEC**  
FINCIBEC GROUP

GRES FINE PORCELLANATO  
FINE PORCELAIN STONEWARE





# SIENA



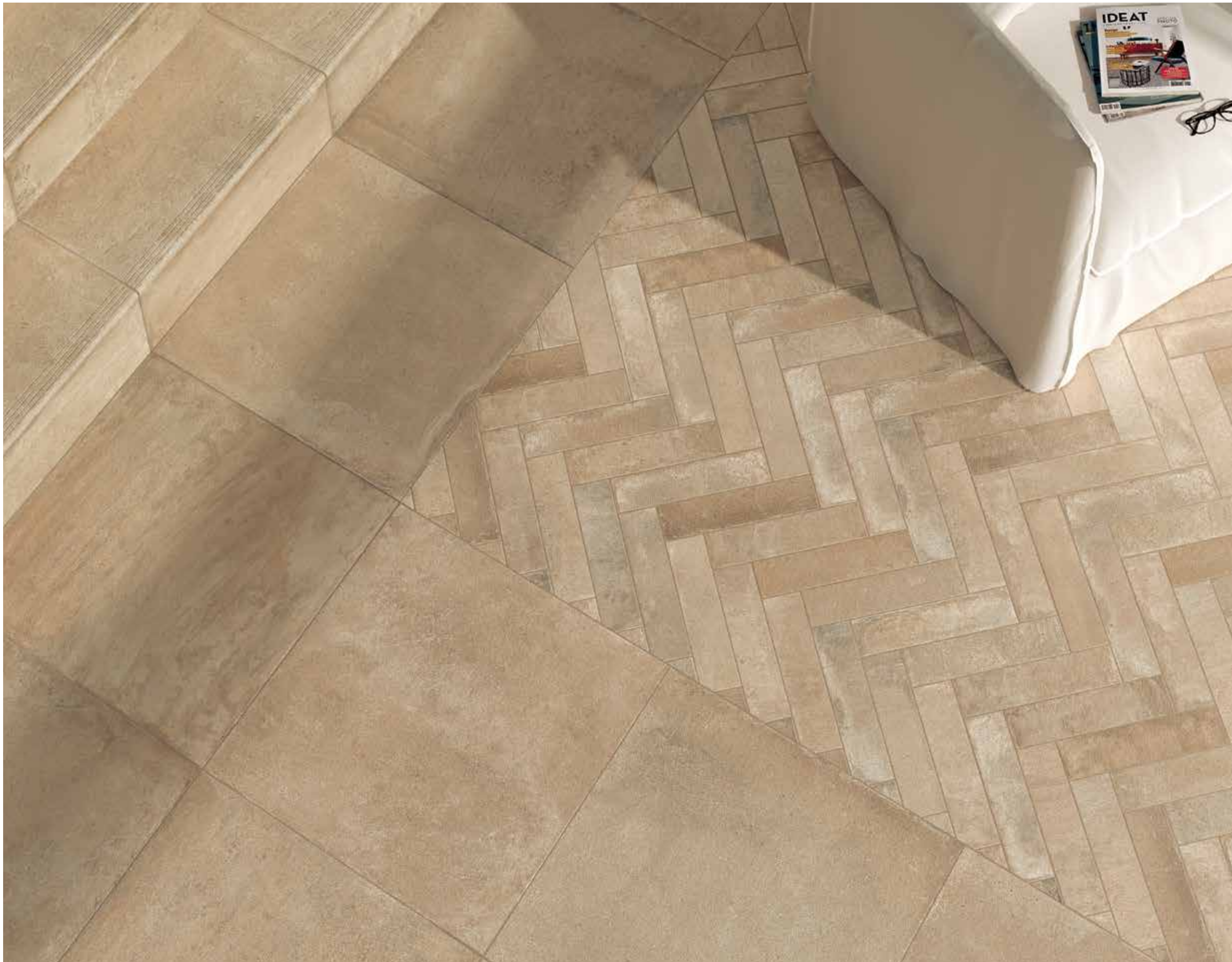
ambiente realizzato con:  
setting realized with:

**siena 50x50**

**siena 25x50**

**siena mattoncino 6,2x25**





# SIENA

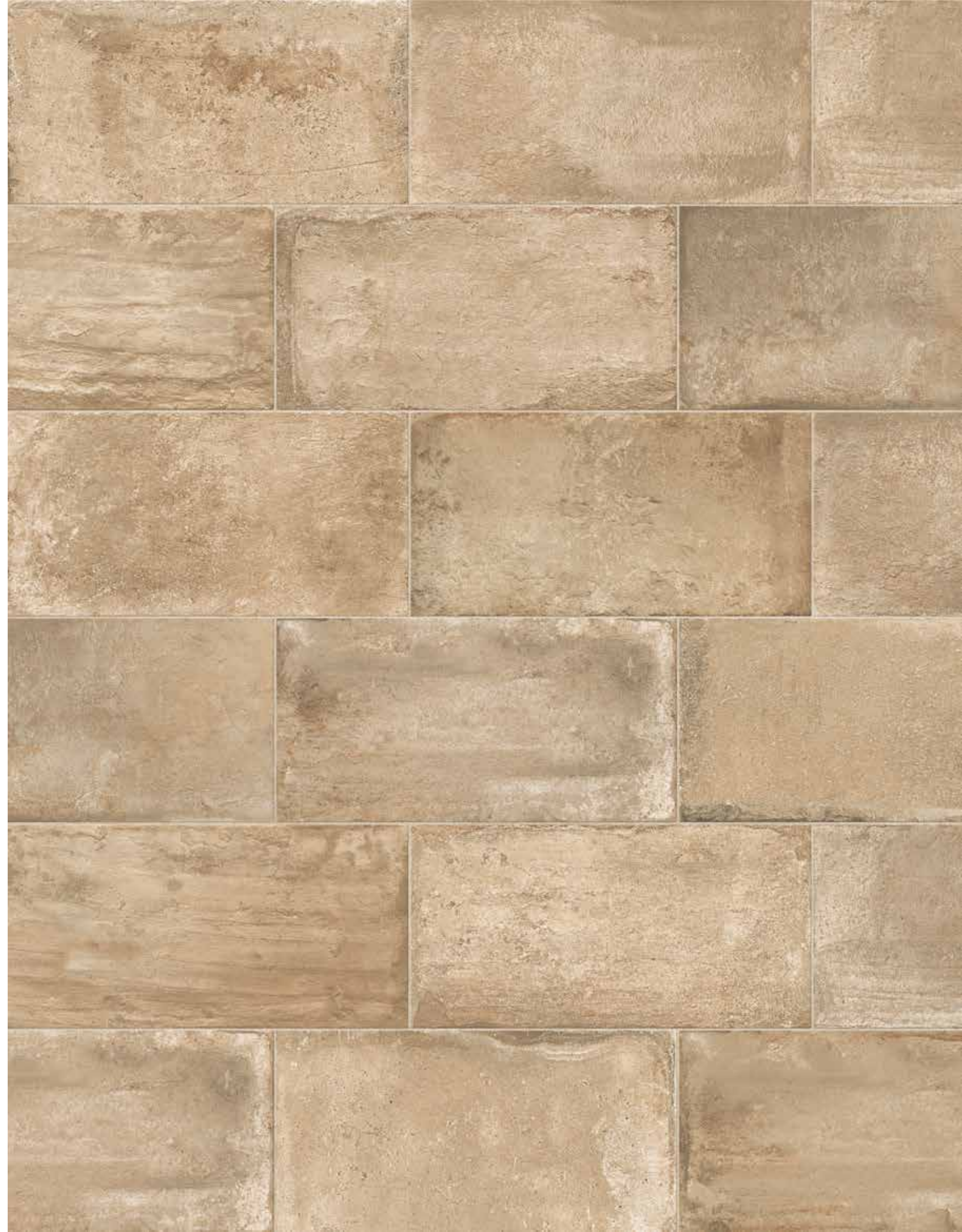






# SIENA

★★★★★  
**MONOCIBEC**  
FINCIBEC GROUP  
GRES FINE PORCELLANATO  
FINE PORCELAIN STONEWARE





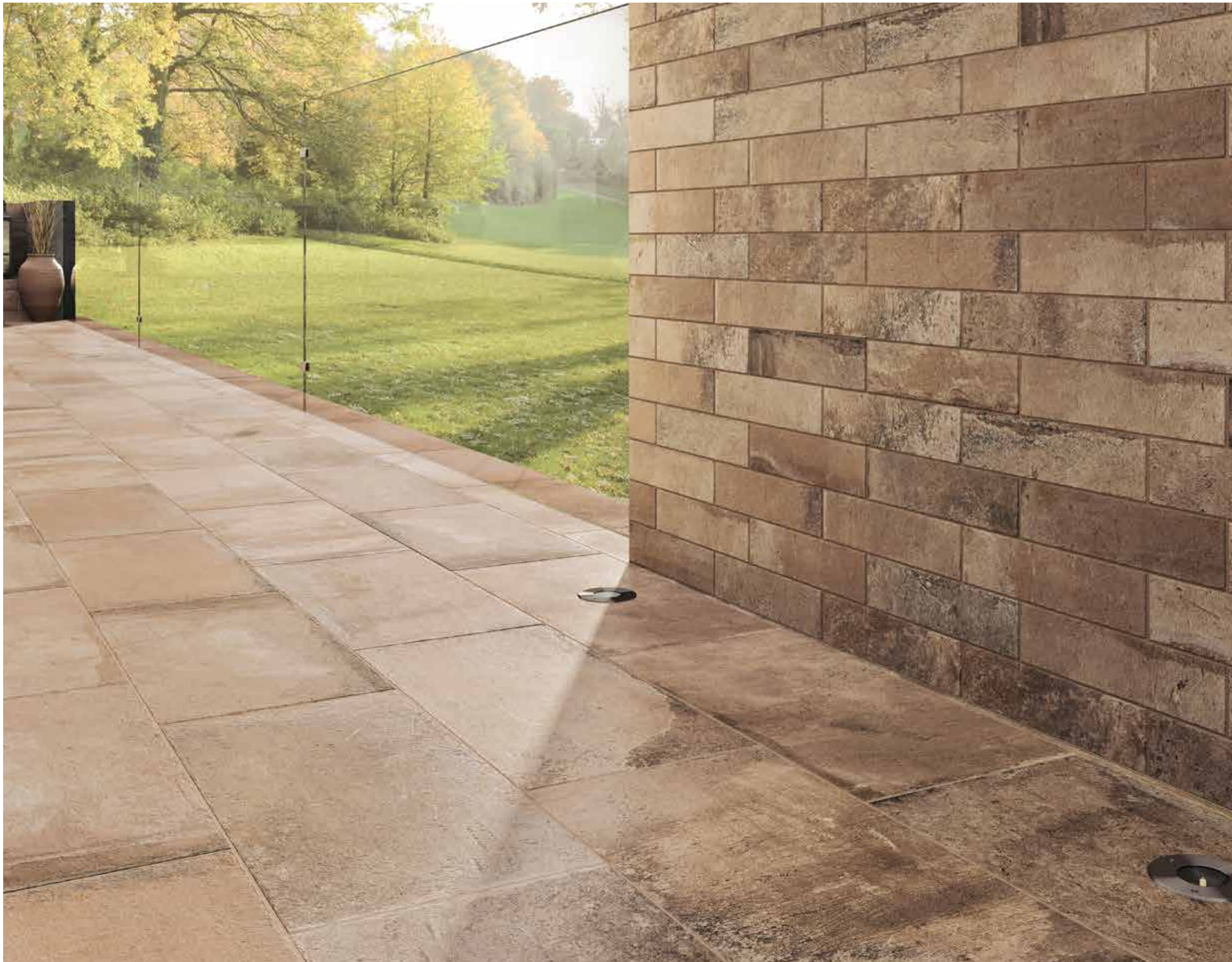
# CANOSSA



ambiente realizzato con:  
setting realized with:

**canossa 25x50**  
**canossa mattoncino 6,2x25**





# CANOSSA



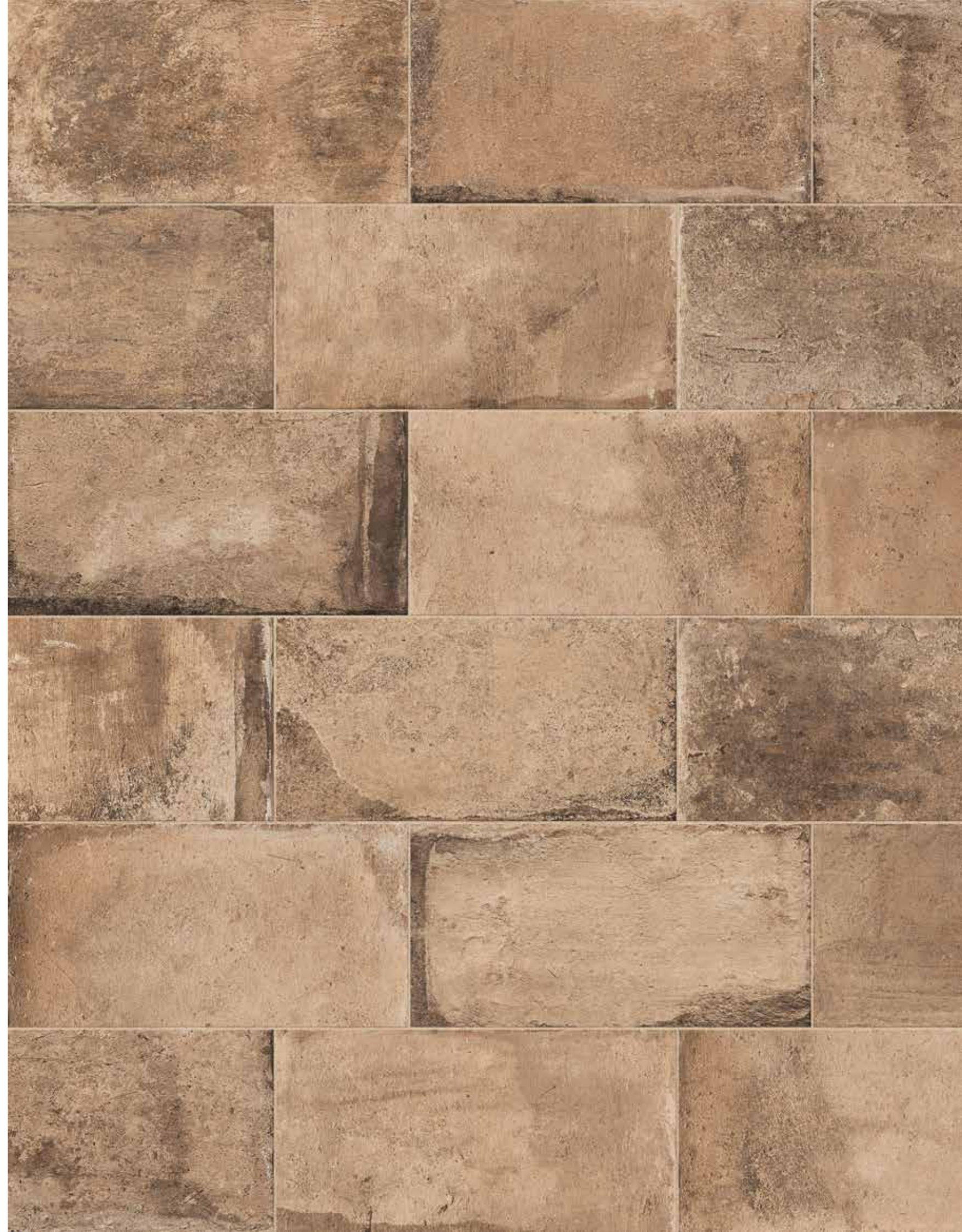




# CANOSSA

★★★★★  
**MONOCIBEC**  
FINCIBEC GROUP

GRES FINE PORCELLANATO  
FINE PORCELAIN STONEWARE





BRUGES



50x50 . 20"x20" grip ■ 83  
94846



25x50 . 10"x20" grip ■ 83  
94850



25x25 . 10"x10" grip ■ 83  
94854



6,2x25 . 2,4"x10" grip  
96148 MATTONCINO  
■ 141

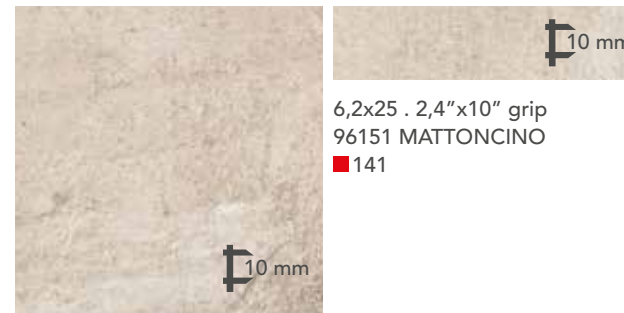
VOLTERRA



50x50 . 20"x20" grip ■ 83  
94845



25x50 . 10"x20" grip ■ 83  
94849



25x25 . 10"x10" grip ■ 83  
94853



6,2x25 . 2,4"x10" grip  
96151 MATTONCINO  
■ 141

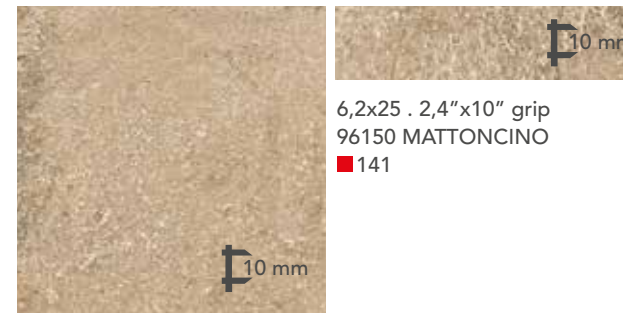
SIENA



50x50 . 20"x20" grip ■ 83  
94844



25x50 . 10"x20" grip ■ 83  
94848



25x25 . 10"x10" grip ■ 83  
94852



6,2x25 . 2,4"x10" grip  
96150 MATTONCINO  
■ 141

CANOSSA



50x50 . 20"x20" grip ■ 83  
94843



25x50 . 10"x20" grip ■ 83  
94847

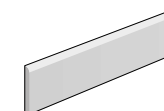


25x25 . 10"x10" grip ■ 83  
94851

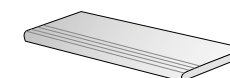


6,2x25 . 2,4"x10" grip  
96149 MATTONCINO  
■ 141

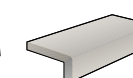
PEZZI SPECIALI . SPECIAL PIECES



8x50 . 3"x20"  
BATTISCOPIA  
● 14



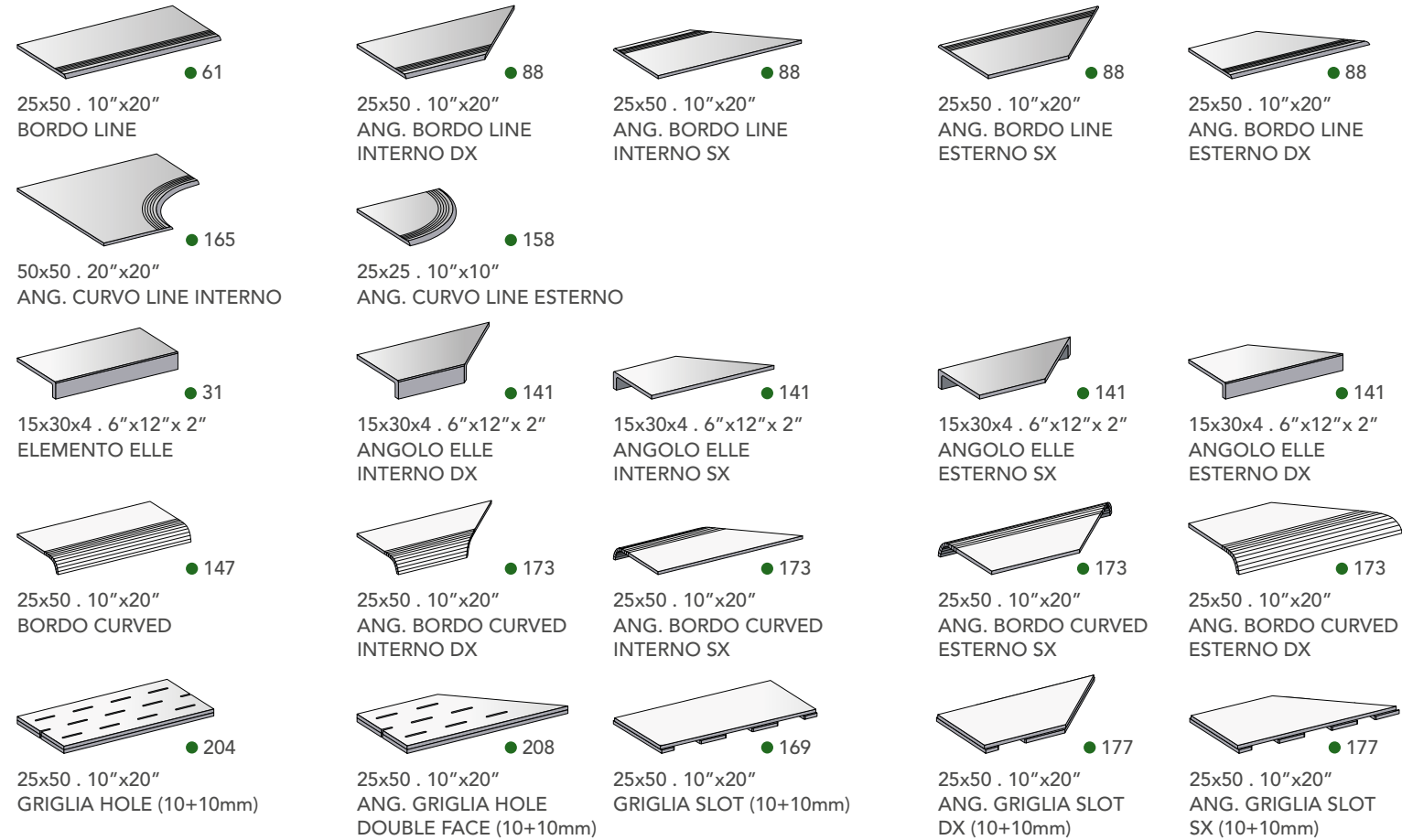
25x50 . 10"x20"  
GRADINO  
● 43



15x30x4 . 6"x12"x2"  
ELEMENTO ELLE MONOLITICO  
● 31

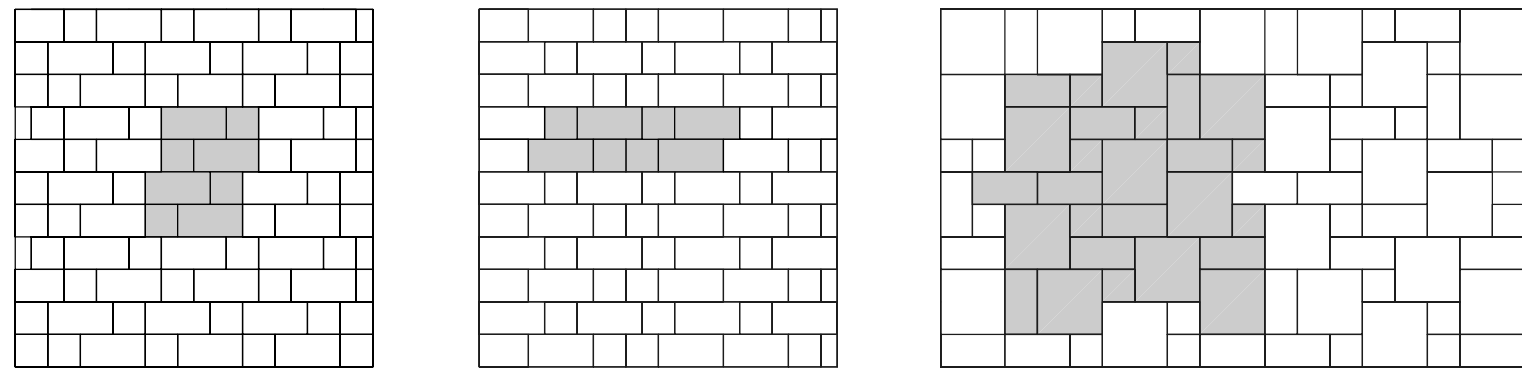


PEZZI SPECIALI POOLS&WELLNESS . POOLS&WELLNESS SPECIAL PIECES



SCHEMI DI POSA . MODULAR LAYOUT

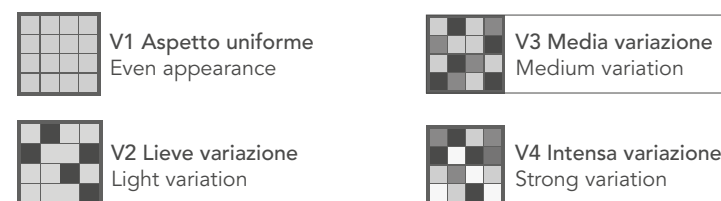
FORMATI - SIZES	% MQ.	FORMATI - SIZES	% MQ.	FORMATI - SIZES	% MQ.
25x50 . 10"x20"	66,7 %	25x50 . 10"x20"	66,7 %	50x50 . 20"x20"	56,3 %
25x25 . 10"x10"	33,3 %	25x25 . 10"x10"	33,3 %	25x50 . 10"x20"	31,3 %
				25x25 . 10"x10"	12,5 %



CATEGORIE D'IMPIEGO . USE CLASSES

- C1** Piastrelle da pavimento consigliate per traffico leggero  
Floor tiles recommended for light traffic
- C2** Piastrelle da pavimento consigliate per traffico medio-leggero  
Floor tiles recommended for medium-light traffic
- C3** Piastrelle da pavimento consigliate per traffico medio  
Floor tiles recommended for medium traffic
- C4** Piastrelle da pavimento consigliate per traffico medio-pesante  
Floor tiles recommended for medium-heavy traffic
- C5** Piastrelle da pavimento consigliate per impieghi con forti sollecitazioni  
Floor tiles recommended for highly stressed uses

VARIAZIONI CROMATICHE . COLOURS VARIATIONS



È indispensabile all'atto della posa, prelevare le piastrelle da più confezioni.  
It is necessary to take the tiles from several different boxes when laying them.

SCHEDA TECNICA  
TECHNICAL DATA

GRES FINE PORCELLANATO  
FINE PORCELAIN STONEWARE



MONOCIBEC ISO 13006B1a EN 14411/G	CARATTERISTICHE TECNICHE TECHNICAL DATA CARACTÉRISTIQUES TECHNIQUES TECHNISCHE DATEN CARACTERÍSTICAS TÉCNICAS	TIPO DI PROVA STANDARD OF TEST NORME DU TEST TESTNORM TIPO DE PRUEBA	VALORE MONOCIBEC MONOCIBEC STANDARDS VALEUR MONOCIBEC ERGEBNIS MONOCIBEC VALOR DE MONOCIBEC
	DIMENSIONI SIZES DIMENSIONS ABMESSUNGEN DIMENSIONES	ISO 10545.2	A NORMA ACCORDING TO NORM SELON LA NORME NACH NORM CONFORME
	ASSORBIMENTO D'ACQUA WATER ABSORPTION ABSORPTION D'EAU WASSERAUFNAHME ABSORCIÓN DEL AGUA	ISO 10545.3	≤ 0,2%
	SFORZO DI ROTTURA MODULUS OF RUPTURE EFFORT DE RUPTURE BRUCHLAST ESFUERZO DE ROTURA	ISO 10545.4	S ≥ 1300 N  R ≥ 35 N/MM2
	RESISTENZA AGLI SHOCK TERMICI RESISTANCE TO THERMAL SHOCK RESISTANCE AUX CHOQUES THERMIQUE TEMPERATURWECHSELBESTÄNDIGKEIT RESISTENCIA A LOS CAMBIOS TÉRMICOS	ISO 10545.9	GARANTITA GUARANTEED GARANTIE GARANTIERT GARANTIZADA
	RESISTENZA AL GELO FROST RESISTANCE RESISTANCE AU GEL FROSTBESTÄNDIGKEIT RESISTENCIA A LA HELADA	ISO 10545.12	GARANTITA GUARANTEED GARANTIE GARANTIERT GARANTIZADA
	COEFFICIENTE DI DILATAZIONE TERMICA LINEARE THERMAL EXPANSION COEFFICIENT COEFFICIENT DE DILATION THERMIQUE LINEARE WÄRMEAUSSDEHNUNGSKOEFFIZIENT COEFICIENTE DE DILATACIÓN TERMICA LINEAR	ISO 10545.8	A NORMA ACCORDING TO NORM SELON LA NORME NACH NORM CONFORME
	RESISTENZA ALL'ATTACCO CHIMICO CHEMICAL RESISTANCE RESISTANCE CHIMIQUE BESTÄNDIGKEIT GEGEN CHEMICALIEN RESISTENCIA AL ATAQUE QUIMICO	ISO 10545.13	A NORMA ACCORDING TO NORM SELON LA NORME NACH NORM CONFORME
	RESISTENZA ALLE MACCHIE STAINS RESISTANCE RESISTANCE AUX TACHES FLECKENBESTÄNDIGKEIT RESISTENCIA A LAS MANCHAS	ISO 10545.14	A NORMA ACCORDING TO NORM SELON LA NORME NACH NORM CONFORME
	RESISTENZA ALLO SCIVOLAMENTO SLIP RESISTANCE RESISTANCE AU GLISSEMENT RUTSCHFESTIGKEIT RESISTENCIA AL DESLIZAMIENTO	ANSI A 137.1-DCOF (Coefficiente di attrito dinamico) (Coefficient of kinetic friction)  B.C.R.A. (D.M. 236μ>0.4)  DIN 51130  DIN 51097	WET > 0.42  CUOIO ASCIUTTO μ>0.4 DRY LEATHER  GOMMA BAGNATA μ>0.4 WET RUBBER  R11  A+B+C

ESCLUSO PEZZI SPECIALI ED ELEMENTI DECORATIVI WITH THE EXCEPTION OF SPECIAL PIECES AND DECORS  
PER ULTERIORI INFORMAZIONI CONSULTARE LE SCHEDE TECNICHE DAL SITO WWW.MONOCIBEC.IT  
FOR FURTHER INQUIRIES, REFER TO THE DATA SHEETS ON THE WEB-SITE WWW.MONOCIBEC.IT

IMBALLI . PACKAGING

	50x50	25x50	25x25	6,2x25		50x50	25x50	25x25	6,2x25	
Pc.	4	9	17	66		Colli boxes	39	54	66	36
M <sup>2</sup>	1	1,125	1,063	1,023		M <sup>2</sup>	39	60,75	70,158	36,828
Kg	22	23,5	22,3	22,5		Kg	858	1.269	1.471,8	810

NOTE . NOTES  
I prodotti possono essere modificati da Fincibec senza preavviso, respingendo ogni responsabilità su possibili danni diretti o indiretti causati da potenziali modifiche.  
Fincibec reserves the right to modify its products without prior notice and cannot be held liable for direct or indirect damage caused by such modifications.  
Verificare sempre la correttezza delle informazioni e dei dati relativi a codici, imballaggi e pesi, consultando il listino prezzi in vigore.  
Always refer to the price list in force to ensure correct information and data on codes, packaging, and weight.  
Le tonalità dei colori riportate nel catalogo sono indicative./ The colours shades, reported on the catalogue, are indicative.





FINCIBEC S.p.A.  
Uffici Comm.li, Stabilimento  
e Amministrazione:

via Valle d'Aosta, 47  
41049 Sassuolo (MO) Italia  
Tel. +39 0536 861.300  
Fax Italia +39 0536 861.400  
Fax Export + 39 0536 806.974 - 861.450  
Fax Uff. Amm. + 39 0536 861.351  
[www.monocibec.it](http://www.monocibec.it) - [info@monocibec.it](mailto:info@monocibec.it)  
[www.fincibec.it](http://www.fincibec.it) - [info@fincibec.it](mailto:info@fincibec.it)  
GRUPPO FIRE - Fire s.r.l.

