

GRAVITY

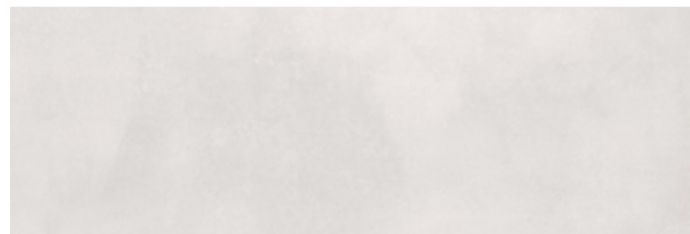
WALL TILE + WHITE BODY + RECTIFIED + MATT
 AZULEJO + PASTA BLANCA + RECTIFICADO + MATE
 30x90 cm/11.8"x36"



View online
 Ver online

BIII **GL**  

COLOURS: / COLORES:



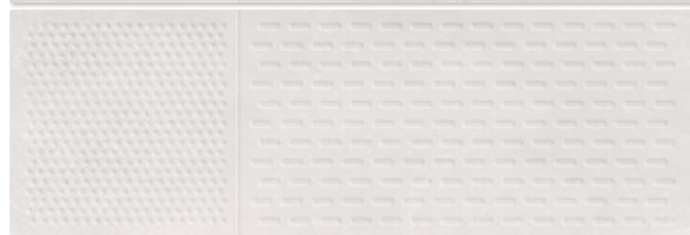
GRAVITY NICKEL



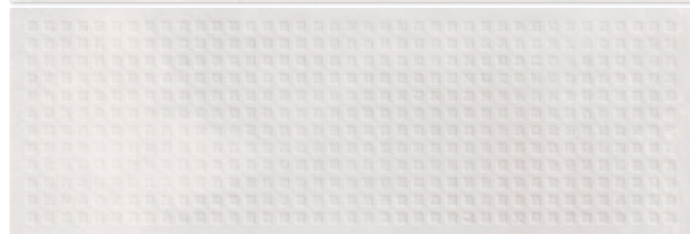
GRAVITY TITANIUM






GRAVITY LANCER NICKEL



GRAVITY LANCER TITANIUM



ADDITIONAL INFORMATION: / INFORMACIÓN ADICIONAL:

	Aesthetic classification: V.3 MODERATE VARIATION Clasificación estética: V.3 VARIACIÓN MODERADA
	This product has a matt finish with glossy effects. Este producto tiene un acabado mate con efectos brillantes.
	This product has different designs in the same box, in a random pattern. Este producto posee varios diseños diferentes que se sirven en la misma caja de forma aleatoria.

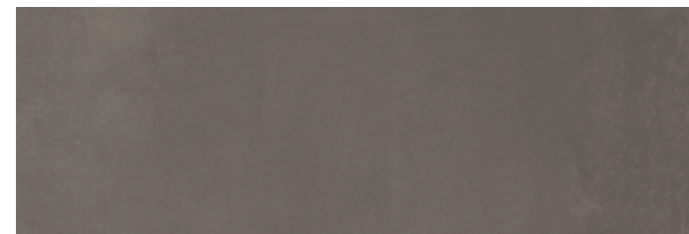
AVAILABLE FORMATS: / FORMATOS DISPONIBLES:

PIECES NAME NOMBRE DE LA PIEZA	SIZES (CM) FORMATOS [CM]	WORK SIZE (MM) FORMATO DE FABRICACIÓN [MM]	PRICE GROUP GRUPO DE PRECIO
GRAVITY RC	30x90 cm/11.8"x36"	300 x 900 x 8,7	M624
GRAVITY LANCER RC	30x90 cm/11.8"x36"	300 x 900 x 8,7	M683

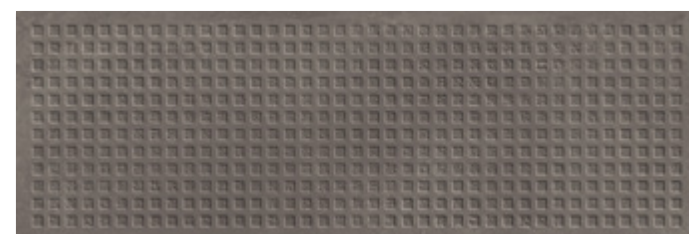
20x60 cm 8"x24"	30x90 cm 11.8"x36"
--------------------	-----------------------

GRAVITY LANCER NICKEL
 30x90 cm/11.8"x36" RC

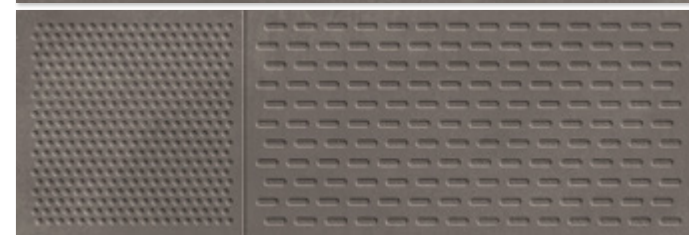
COLOURS: / COLORES:



GRAVITY IRON



GRAVITY LANCER IRON

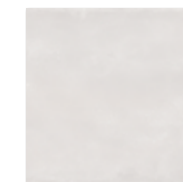
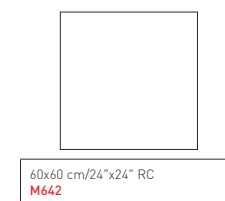


COORDINATED FLOOR TILE: / PAVIMENTO COORDINADO:

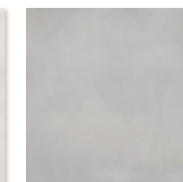
GRAVITY

GLAZED PORCELAIN STONEWARE + STD BODY + RECTIFIED + MATT
 GRES PORCELÁNICO ESMALTADO + PASTA STD + RECTIFICADO + MATE

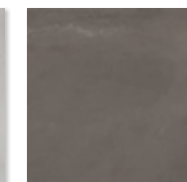
Bla **GL**   



GRAVITY NICKEL



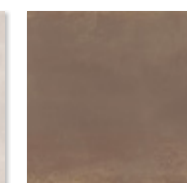
GRAVITY TITANIUM



GRAVITY IRON



GRAVITY GOLD



GRAVITY OXIDE

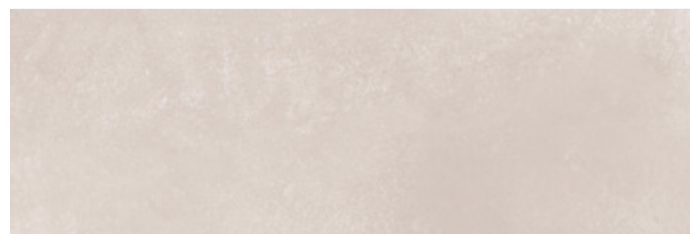
GRAVITY

WALL TILE + WHITE BODY + RECTIFIED + MATT
AZULEJO + PASTA BLANCA + RECTIFICADO + MATE
30x90 cm/11.8"x36"



View online
Ver online

COLOURS: / COLORES:



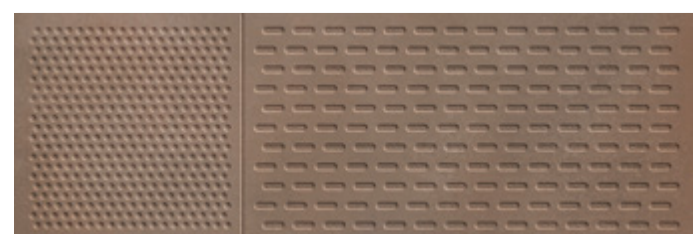
GRAVITY GOLD



GRAVITY OXIDE



GRAVITY LANCER GOLD



GRAVITY LANCER OXIDE

ADDITIONAL INFORMATION: / INFORMACIÓN ADICIONAL:

	Aesthetic classification: V.3 MODERATE VARIATION Clasificación estética: V.3 VARIACIÓN MODERADA
	This product has a matt finish with glossy effects. Este producto tiene un acabado mate con efectos brillantes.
	This product has different designs in the same box, in a random pattern. Este producto posee varios diseños diferentes que se sirven en la misma caja de forma aleatoria.

AVAILABLE FORMATS: / FORMATOS DISPONIBLES:

PIECES NAME NOMBRE DE LA PIEZA	SIZES (CM) FORMATOS [CM]	WORK SIZE (MM) FORMATO DE FABRICACIÓN [MM]	PRICE GROUP GRUPO DE PRECIO
GRAVITY RC	30x90 cm/11.8"x36"	300 x 900 x 8,7	M624
GRAVITY LANCER RC	30x90 cm/11.8"x36"	300 x 900 x 8,7	M683

20x60 cm 8"x24"	30x90 cm 11.8"x36"
--------------------	-----------------------



COORDINATED FLOOR TILE: / PAVIMENTO COORDINADO:

GRAVITY
GLAZED PORCELAIN STONEWARE + STD BODY + RECTIFIED + MATT
GRES PORCELÁNICO ESMALTADO + PASTA STD + RECTIFICADO + MATE



 60x60 cm/24"x24" RC M642	 SKIRTING: / RODAPIE: 60x8 cm/24"x3" P097	 GRADONE STRAIGHT: PELDANO GRADONE: 60x60 cm/24"x24" P749
--	---	---

GRAVITY NICKEL	GRAVITY TITANIUM	GRAVITY IRON
GRAVITY GOLD	GRAVITY OXIDE	

GRAVITY

WALL TILE + WHITE BODY + MATT
AZULEJO + PASTA BLANCA + MATE
20x60 cm/8"x24"

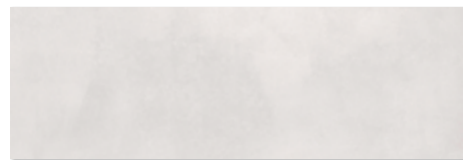


View online
Ver online

GRAVITY TITANIUM
20x60 cm/8"x24"

GRAVITY LANCER TITANIUM
20x60 cm/8"x24"

COLOURS: / COLORES:



GRAVITY NICKEL



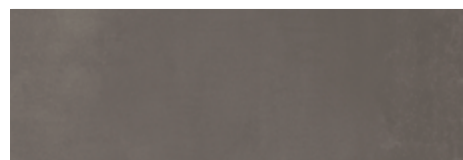
GRAVITY LANCER NICKEL



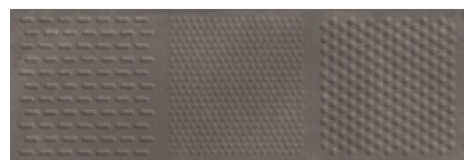
GRAVITY TITANIUM



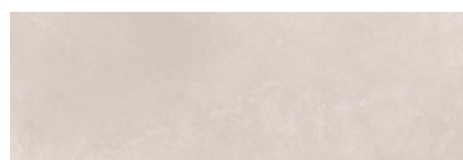
GRAVITY LANCER TITANIUM



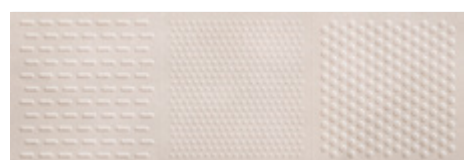
GRAVITY IRON



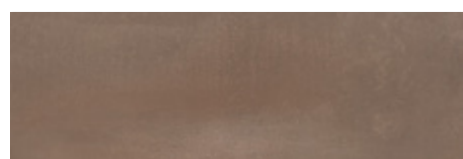
GRAVITY LANCER IRON



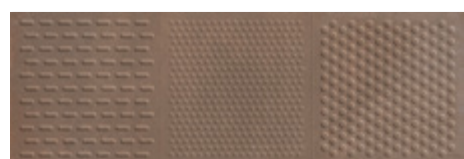
GRAVITY GOLD



GRAVITY LANCER GOLD




GRAVITY OXIDE



GRAVITY LANCER OXIDE

ADDITIONAL INFORMATION: / INFORMACIÓN ADICIONAL:

 Aesthetic classification: V.3 MODERATE VARIATION
Clasificación estética: V.3 VARIACIÓN MODERADA

AVAILABLE FORMATS: / FORMATOS DISPONIBLES:

PIECES NAME NOMBRE DE LA PIEZA	SIZES (CM) FORMATOS (CM)	WORK SIZE (MM) FORMATO DE FABRICACIÓN (MM)	PRICE GROUP GRUPO DE PRECIO
GRAVITY	20x60 cm/8"x24"	200 x 601 x 9	M387
GRAVITY LANCER	20x60 cm/8"x24"	200 x 601 x 9	M428

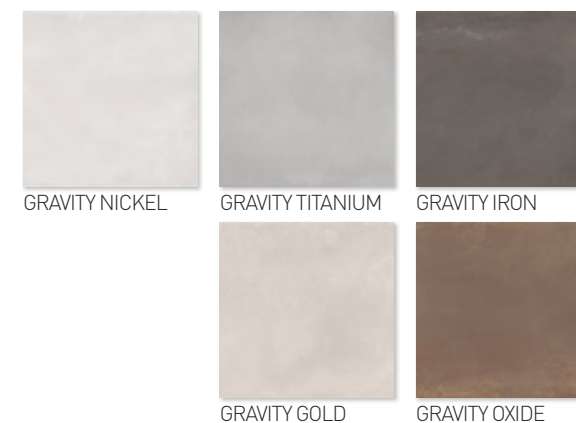
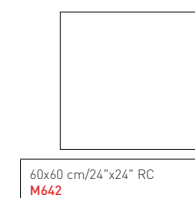
20x60 cm
8"x24"

30x90 cm
11.8"x36"

COORDINATED FLOOR TILE: / PAVIMENTO COORDINADO:

GRAVITY

GLAZED PORCELAIN STONEWARE + STD BODY + RECTIFIED + MATT
GRES PORCELÁNICO ESMALTADO + PASTA STD + RECTIFICADO + MATE



GRAVITY

GLAZED PORCELAIN STONEWARE + STD BODY + RECTIFIED + MATT
GRES PORCELÁNICO ESMALTADO + PASTA STD + RECTIFICADO + MATE
90x90 cm/36"x36" + 60x120 cm/24"x48" + 60x60 cm/24"x24"



View online
Ver online

Bla **GL**   

COLOURS: / COLORES:



GRAVITY NICKEL



GRAVITY TITANIUM



GRAVITY IRON

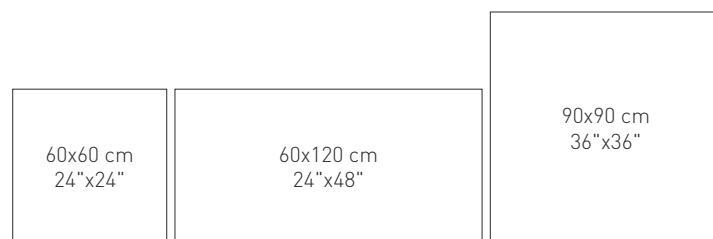
COLOURS: / COLORES:



GRAVITY GOLD







GRAVITY OXIDE





AVAILABLE FORMATS: / FORMATOS DISPONIBLES:

PIECES NAME NOMBRE DE LA PIEZA	SIZES (CM) FORMATOS (CM)	WORK SIZE (MM) FORMATO DE FABRICACIÓN (MM)	PRICE GROUP GRUPO DE PRECIO
GRAVITY RC	90x90 cm/36"x36"	900 x 900 x 11	M825
GRAVITY RC	60x120 cm/24"x48"	600 x 1200 x 10,5	M848
GRAVITY RC	60x60 cm/24"x24"	600 x 600 x 10	M642

ADDITIONAL INFORMATION: / INFORMACIÓN ADICIONAL:

 2	CLASS 2 UNE ENV 12633.2003 ANTI-SLIP Test performed in a single production / Prueba realizada en una sola producción.
 V.2	Aesthetic classification: V.2 SLIGHT VARIATION Clasificación estética: V.2 PEQUEÑA VARIACIÓN
	This product has a matt finish with glossy effects. Este producto tiene un acabado mate con efectos brillantes.
	Argenta recommends using a minimum joint width of 3 mm. Never fit tiles without joints between them. Protecting the product during placement and appropriate cleaning after grouting and other work are part of a correct fitting process. For more information, see: www.argentaceramica.com Argenta recomienda utilizar una junta mínima de 3mm. En ningún caso se puede colocar el material sin junta. La protección del producto durante su colocación y una adecuada limpieza posterior al rejuntado y las obras, hacen parte de un correcto proceso de instalación. Para más información sobre la colocación y el rejuntado del mismo ir a la página web de Argenta Cerámica S.L. www.argentaceramica.com

SKIRTING: / RODAPIE:

90x7 cm/36"x2.7"	P197	
60x8 cm/24"x3"	P097	

GRADONE STRAIGHT:
PELDAÑO GRADONE:

90x90 cm/36"x36"	P1014
60x120 cm/24"x48"	P1513
60x60 cm/24"x24"	P749



Wall/Revestimiento: GRAVITY LANCER NICKEL 30x90 cm/11.8"x36" RC + GRAVITY IRON 30x90 cm/11.8"x36" RC
Floor/Pavimento: GRAVITY IRON 90x90 cm/36"x36" RC