



Gris Vulcano





Gris Vulcano





Gris Vulcano





Gris Vulcano





Baldosa
Floor tile
40 x 40 cm.



Baldosa
Floor tile
60 x 60 cm.



Baldosa
Floor tile
40 x 60 cm.



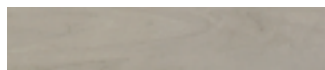
Baldosa
Floor tile
30 x 60 cm.



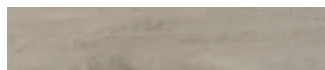
Baldosa
Floor tile
60 x 120 cm.

Gris Vulcano

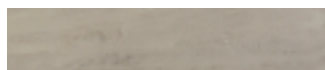




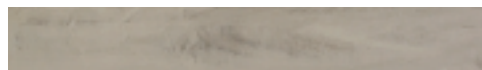
Rodapié Romo
Romo skirting
8 x 40 cm.



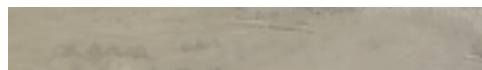
Rodapié Recto
Recto skirting
8 x 40 cm.



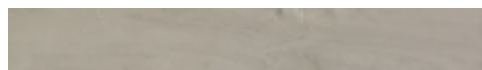
Listelo
Liners
8 x 40 cm.



Rodapié Romo
Romo skirting
8 x 60 cm.



Rodapié Recto
Recto skirting
8 x 60 cm.



Listelo
Liners
8 x 60 cm.



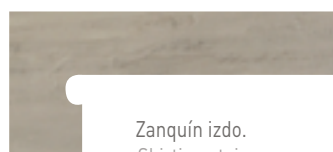
Tapa escalera
Cover stair
34,3 x 3,9 cm.



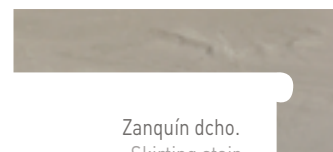
Taco
Insert
8 x 8 cm.



Taco
Insert
15 x 15 cm.



Zanquín izdo.
Skirting stair
42,4 x 19 cm.

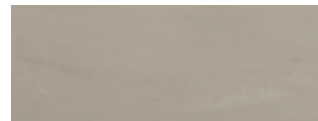


Zanquín dcho.
Skirting stair
42,4 x 19 cm.

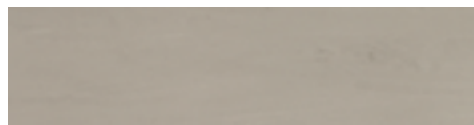
FORMATO	PESO PIEZA	PZAS. CAJA	M ² . CAJA	PESO CAJA	Nº CAJAS PALET	PESO PALET
SIZE	PIECES WEIGHT	PIECES / BOX	SQM / BOX	WEIGHT BOX	BOXES / PALLET	WEIGHT PALLET
3,9 x 34,3	0,275 Kg.	52	-----	14,300 Kg.	S.P./U.O.*	S.P./U.O.*
8 x 8	0,170 Kg.	100	-----	17,000 Kg.	S.P./U.O.*	S.P./U.O.*
8 x 40	0,860 Kg.	21	8,400 ml.	18,000 Kg.	S.P./U.O.*	S.P./U.O.*
8 x 60	1,188 Kg.	12	7,200 ml.	14,250 Kg.	S.P./U.O.*	S.P./U.O.*
15 x 15	0,550 Kg.	24	0,540 ml.	13,500 Kg.	S.P./U.O.*	S.P./U.O.*
19 x 42,4	0,975 Kg.	8	-----	7,800 Kg.	S.P./U.O.*	S.P./U.O.*
30 x 60	3,900 Kg.	5	0,900 ml.	20,000 Kg.	48	940 Kg.
40 x 40	3,550 Kg.	6	0,960 ml.	21,600 Kg.	72	1.555 Kg.
40 x 60	5,325 Kg.	5	1,200 ml.	26,000 Kg.	48	1.300 Kg.
60 x 60	8,750 Kg.	4	1,440 ml.	35,300 Kg.	24	890 Kg.
60 x 120	17,500 Kg.	2	1,440 ml.	35,300 Kg.	21	800 Kg.

*S.P. Según Pedido / U.O. Under Order

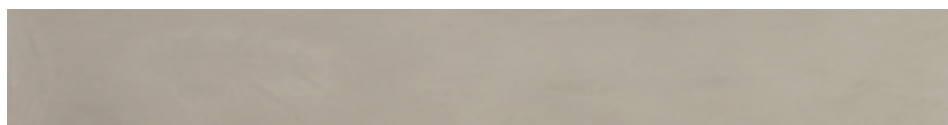




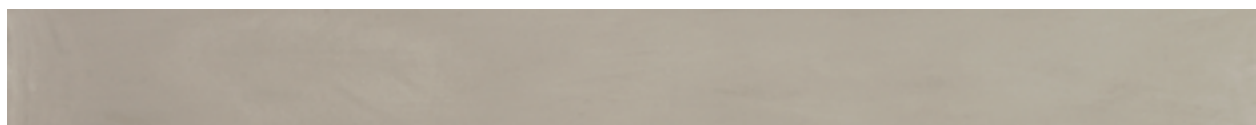
Tabica Stair risers
15 x 40 cm.



Tabica Stair risers
15 x 60 cm.



Tabica Stair risers
15 x 120 cm.



Tabica Stair risers
15 x 160 cm.



Peldaño
Stair tread
120 x 32 cm.

Peldaño
Stair tread
160 x 32 cm.





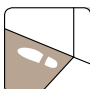
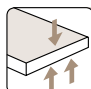
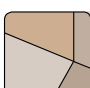
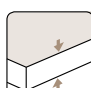

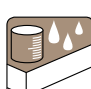
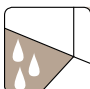
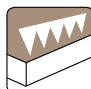
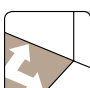




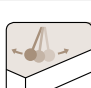
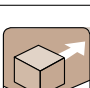

FORMATO	PESO PIEZA	PZAS. CAJA	M ² . CAJA	PESO CAJA	Nº CAJAS PALET	PESO PALET
SIZE	PIECES WEIGHT	PIECES / BOX	SQM / BOX	WEIGHT BOX	BOXES / PALLET	WEIGHT PALLET
15 x 40	-----	11	-----	-----	-----	-----
15 x 60	-----	6	-----	-----	-----	-----
15 x 120	4,905 Kg.	-----	-----	-----	S.P./U.O.*	S.P./U.O.*
15 x 160	6,540 Kg.	-----	-----	-----	S.P./U.O.*	S.P./U.O.*
120 x 32	12,600 Kg.	2	2,400 ml.	26,300 Kg.	20	540 Kg.
160 x 32	16,800 Kg.	2	3,200 ml.	33,800 Kg.	18	640 Kg.

*S.P. Según Pedido / U.O. Under Order



Características Técnicas / Technical Features

DESCRIPCIÓN ICONOGRÁFICA DE LAS CARACTERÍSTICAS TÉCNICAS DEL PRODUCTO / ICONOGRAPHIC DESCRIPTION OF THE PRODUCT'S TECHNICAL FEATURES

<p>Revestimiento Coating</p> 		<p>Dureza mohs UNE-EN 67.101 Surface scratch hardness (mohs scale) UNE-EN 67.101</p> 	<p>5 - 7</p>
<p>Pavimento Floor tile</p> 		<p>Resistencia a la flexión UNE-EN 10545-4 Bending resistance UNE-EN 10545-4</p> 	<p>35-55 N/mm²</p>
<p>Destonificado Colour Variety</p> 		<p>Grosor de pieza Thickness</p> 	<p>9 a 12 mm.</p>
<p>Alto tránsito Busy transit</p> 		<p>Higiénico: resistente a productos de limpieza con químicas fuertes. UNE-EN 10545-13 Hygienic: resistance to chemical etching UNE-EN 10545-13</p> 	<p>Resiste</p>
<p>Absorción de agua UNE-EN 10545-3 Water absorption UNE-EN 10545-3</p> 	<p>< 0,5</p>	<p>Resistencia a la abrasión profunda. UNE-EN 10545-6 Deep abrasion resistance UNE-EN 10545-6</p> 	<p><175 mm³</p>
<p>Coefficiente de dilatación térmica UNE-EN 10545-8 Lineal thermal expansion coefficient UNE-EN 10545-8</p> 	<p>< 4x10⁶/°C</p>	<p>Resistencia al choque térmico UNE-EN 10545-9 Resistance against thermal shocks UNE-EN 10545-9</p> 	<p>Resiste</p>
<p>Resistencia a las manchas UNE-EN 10545-14 Resistance to staining UNE-EN 10545-14</p> 	<p>Resiste</p>	<p>Resistencia al hielo UNE-EN 10545-12 Frost resistance UNE-EN 10545-12</p> 	<p>Resiste</p>
<p>Junta estéticamente recomendada Joint aestetically recommended</p> 	<p>Junta 2 mm</p>	<p>Resistencia al deslizamiento UNE-ENV 12633 Sliding resistance UNE-ENV 12633</p> 	<p>Clase 1</p>
<p>ASTM-C 1028-96 Coeficiente de fricción estática ASTM-C 1028-96 static coefficient of friction</p> 	<p>F_s - 0,98</p>	<p>ASTM-C 1028-96 Coeficiente de fricción estática ASTM-C 1028-96 static coefficient of friction</p> 	<p>F_h - 0,70</p>

*CLASE 3: RECOMENDADO PARA EXTERIORES, PISCINAS Y ZONAS HÚMEDAS.

*CLASS 3: RECOMMENDED FOR EXTERIORS, SWIMMING POOLS AND WET AREAS.

Gris Vulcano

