

GROHE RED®

STREAMLINE YOUR KITCHEN

Never wait for the kettle to boil again. With the innovative GROHE Red® system you can fill anything, from a mug to a large pot, with kettle-hot water in an instant – and all direct from your kitchen faucet.

With GROHE Red® you still have your standard kitchen mixer, but a second lever provides kettle-hot water on tap.

THE BENEFITS ARE CRYSTAL CLEAR

CLEAN, FRESH TASTE

filtered water heated to 100 degrees for an exceptional taste experience

CLEAR YOUR WORKTOP

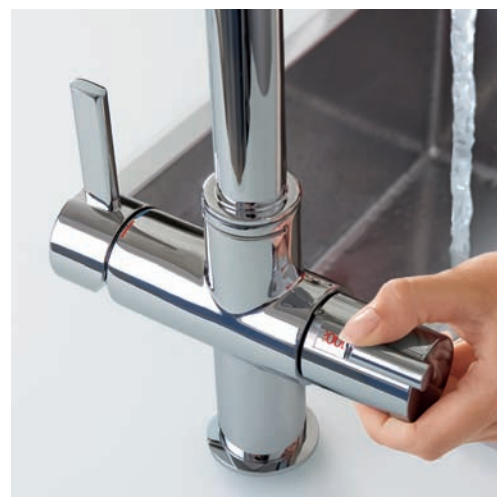
no need for the clutter of a kettle. GROHE Red® fulfils all your water needs from a single faucet

NO MORE WAITING

kettle-hot water is always available at the turn of the lever, so waiting for the kettle or pot to boil is a thing of the past

LESS WASTE

you only take the exact amount of hot water you need, so you save on water and energy consumption*



* GROHE Red Duo 8i:
Energy efficiency class water heater: B



GROHE RED®

A SINGLE, SIMPLE SOLUTION

TASTE THE DIFFERENCE

Use GROHE Red® in combination with a GROHE Blue® filter and get fresh just-filtered water served kettle-hot. Enjoy your tea and coffee with a great clean taste. The boiler where the water is heated is made of titanium, which does not impart any metallic taste to the water. It is also highly resistant to corrosion and limescale build-up, meaning a consistently great taste over the lifetime of the faucet.

DECLUTTER YOUR KITCHEN

What busy kitchen doesn't need more worktop space? With GROHE Red® you can clear the clutter of your kettle from the worktop and get both hot and cold mixed water plus kettle-hot water, all from the same faucet. The system's compact boiler is designed to fit discreetly below the sink, leaving you more counter space and a cleaner, clearer-looking kitchen.





SAVE PRECIOUS TIME

Never wait for a pot of boiling water or a much-needed cup of tea again. We all lead busy lives, and time spent waiting for water to boil all adds to the time spent on chores rather than relaxing. Whether it's cooking pasta, blanching vegetables or preparing a baby's bottle, GROHE Red® cuts out the waiting time with kettle-hot water ready for you, the instant that you want it.

SAVE WATER, SAVE ENERGY

Think for a moment about how often you boil and reboil the kettle. How often do you actually use all the water? With GROHE Red® you only take the hot water you need, saving precious water and time. In combination with the large GROHE Red® boiler*, which can replace a warm water outlet in the kitchen, the system saves even more water. The large GROHE Red® boiler delivers the heated water for both kettle-hot water and also warm water for the sink mixer, instantly. No more wasted water while you wait for it to reach optimum temperature.

* GROHE Red Duo 8l:
Energy efficiency class water heater: B

GROHE RED®

KETTLE-HOT WATER ON TAP

How many times a day do you fill and boil the kettle?
From the first cup of tea in the morning to a late night
pasta dinner, we boil up water countless times, often
heating far more than we need. With GROHE Red® you
have water heated to 100°C ready when you want it.
It's convenient and saves water and time.





GROHE RED®



CHILDLCK

Safety is paramount in a family kitchen. That's why GROHE Red® faucets are designed with a child lock that makes scalding practically impossible: for the boiling water to flow, you must first pull and then turn the left handle. This child-safe feature has been independently tested and certified.



ZERTIFIKAT

Das **ivm** Institut Verpackungsmarktforschung
akkreditiert als Zertifizierungsstelle nach DIN EN 45011 vom


Deutscher Akkreditierungs Rat
DAR
DAP-ZE-3156.00

bestätigt hiermit, dass das Testobjekt

GROHE RED®
Heißwasser-Armatur mit Öffnungssicherung
der
Grohe AG
Düsseldorf, Deutschland
als
kindergesichert
bezeichnet werden kann.

Das Testobjekt hat die Prüfung auf Konformität nach einem angepassten Prüfverfahren entsprechend ISO 8317 (2003) bestanden.

Die Heißwasser-Armatur ist kindergesichert.

Zertifizierungsnummer: **ivm ZERT 22966032008 - 8317**
Datum der Erstzertifizierung: 18.03.2008

Braunschweig, 23.09.2009


Dr. Horst Antonischki
Institutsleiter


ivm Institut Verpackungsmarktforschung GmbH
Friedrich-Seele-Straße 20, 38122 Braunschweig
fon +49(0)531-28509245; fax +49(0)531-28509246
www.ivm-childsafe.de

ZE-22966032008-8317

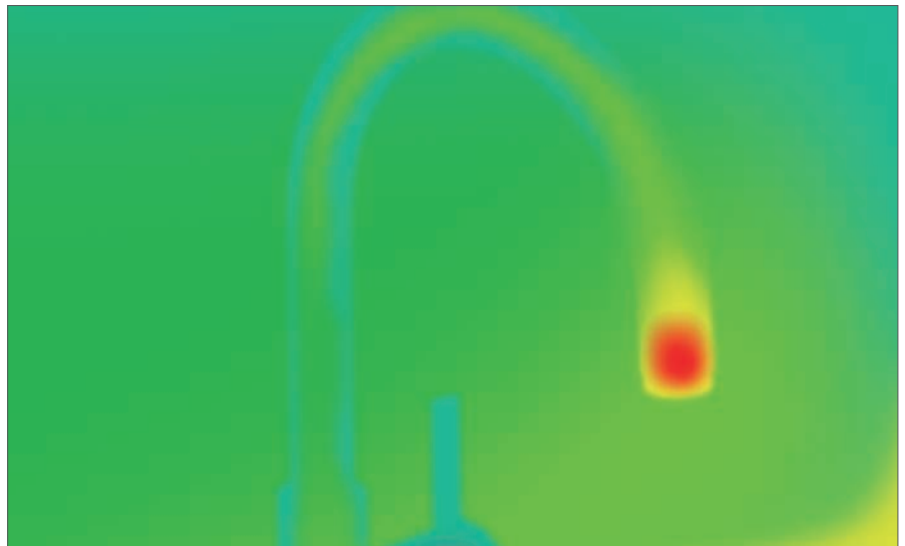


TECHNOLOGY YOU CAN TRUST



GROHE COOLTOUCH®

GROHE CoolTouch® technology offers you total peace of mind. It insulates the faucet so well that you can touch the spout without any risk of scalding, making it far preferable to a kettle in homes with young children.



GROHE RED® TITANIUM BOILER

All boilers in our GROHE Red® collection are made from titanium. Unlike stainless steel and copper, two metals traditionally used for boilers, titanium is highly resistant to corrosion and limescale build-up – ensuring perfect performance over a lifetime. It also guarantees that your water is free of any metallic taste.

GROHE RED® DUO

Kettle-hot water – optionally filtered – plus mixed hot and cold water: GROHE Red® Duo means you can have it all covered in just one faucet, replacing your standard kitchen tap. When combined with the larger Red® boiler, it is even ideal for kitchens without a hot water supply. It instantly delivers warm water for the kitchen mixer without waiting for water to heat up. Available in two spout shapes, it is also the perfect match with a GROHE Blue® Mono water system.





30 079 000* / 30 079 DC0*
GROHE Red® Duo
faucet and boiler 8 litres



30 156 000* / 30 156 DC0*
GROHE Red® Duo
faucet and boiler 8 litres



30 083 000 / 30 083 DC0
GROHE Red® Duo
faucet and boiler 4 litres



30 145 000 / 30 145 DC0
GROHE Red® Duo
faucet and boiler 4 litres



40 404 001
GROHE Blue® S-Size Filter
40 430 001
GROHE Blue® M-Size Filter
40 412 001
GROHE Blue® L-Size Filter



40 438 001
GROHE Red®
S-Size Filter complete with filter head

Colour options:

● 000 | StarLight Chrome | ● DC0 | SuperSteel



GROHE SilkMove®



GROHE StarLight®



GROHE CoolTouch®



Enhanced Water



Child Lock



Titanium Inside



Comfort Height



Swivel Stop

* GROHE Red Duo 8l:
Energy efficiency class water heater: B



GROHE RED[®] MONO

Add a GROHE Red[®] Mono to your existing kitchen faucet and say goodbye to your kettle for good. The smaller Mono faucet supplies boiling water only and is the perfect combination with a GROHE Blue[®] Duo water system. Choose from two elegant spout shapes to find the perfect fit for your kitchen.





30 080 000* / 30 080 DC0*
GROHE Red® Mono
faucet and boiler 8 litres



30 157 000* / 30 157 DC0*
GROHE Red® Mono
faucet and boiler 8 litres



30 085 000 / 30 085 DC0
GROHE Red® Mono
faucet and boiler 4 litres



30 147 000 / 30 147 DC0
GROHE Red® Mono
faucet and boiler 4 litres



40 404 001
GROHE Blue® S-Size Filter
40 430 001
GROHE Blue® M-Size Filter
40 412 001
GROHE Blue® L-Size Filter



40 438 001
GROHE Red®
S-Size Filter complete with filter head

Colour options:

● 000 | StarLight Chrome | ● DC0 | SuperSteel



GROHE SilkMove®



GROHE StarLight®



GROHE CoolTouch®



Enhanced Water



Child Lock



Titanium Inside



Comfort Height

* GROHE Red Duo 8l:
Energy efficiency class water heater: B



GROHE BLUE®

A SMART SOLUTION FOR YOUR OFFICE KITCHEN

A busy office runs on... tea, coffee and lots of fresh water. From water-cooler moments to brainstorming sessions powered by a pot of hot coffee, drinking water is at the heart of the day-to-day life of any company. Now you can find a smarter solution that saves your company time, energy and money, while offering great taste and unbelievable convenience, with GROHE's water systems.

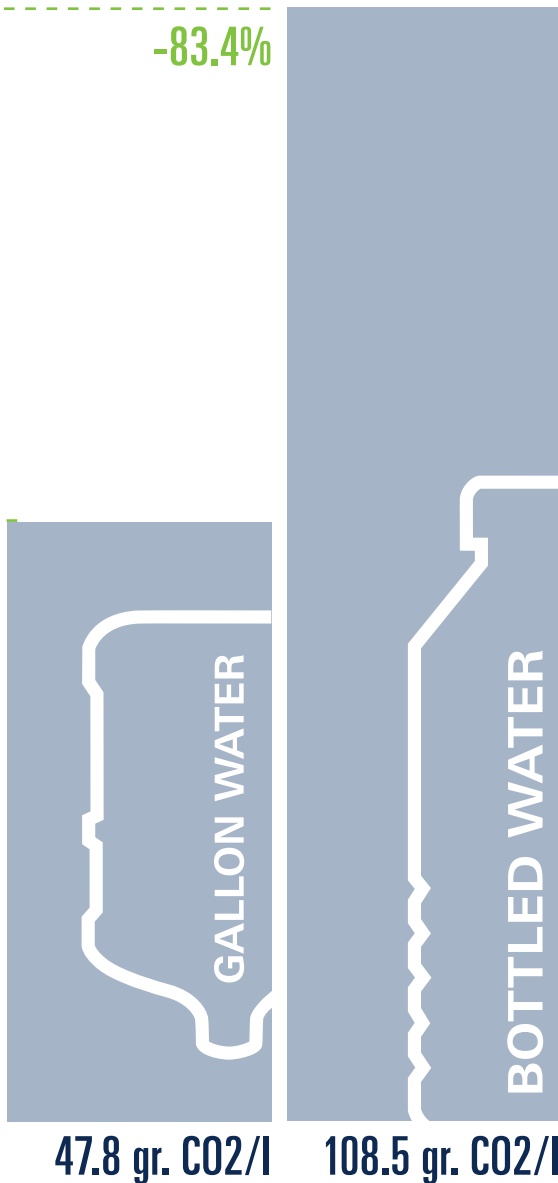


*Total consumption of 33.000 litres water (in a company with 30 employees; 1 litre/person/day; over a period of 5 years).
Source: CO₂ Carbon footprint study from Goettingen university, Germany 2013/2014



-83.4%

-62.4%



ENJOY FRESH THINKING WITH GROHE BLUE®

With a GROHE Blue® water system your company can enjoy the benefits of filtered chilled and sparkling water on tap:

BEST VALUE FOR MONEY

GROHE Blue® filters, chills and even carbonates tap water, so no more expensive and disruptive deliveries of expensive bottled water.

MOST ENVIRONMENTALLY SUSTAINABLE

With no plastic bottles and lower CO2 emissions* than for normal bottled water GROHE Blue® will reduce your office's carbon footprint.

The University of Goettingen made a detailed analysis of the influence of drinking water production on our environment. With only 17.96 gr per litre, GROHE Blue® saves up to 62.4% CO2 emissions compared to gallon water and 83.4% compared to bottled water.

FREE UP PRECIOUS SPACE

With GROHE Blue® there is no more need to set aside vast amounts of valuable office space for storing bottled water.

GROHE RED®

SAVE TIME AND MONEY IN YOUR OFFICE KITCHEN

With GROHE Red® everyone in the company can enjoy kettle-hot filtered water direct from the faucet.

NO MORE WAITING

Don't fear the tea round! With GROHE Red® you can say goodbye to waiting for the kettle to boil. Instead enjoy pure water heated to 100°C, always available at the moment you want it.

A CLEANER, CLEARER KITCHEN

With no need for a kettle your kitchen will be less cluttered and easier to keep clean and tidy.

THE MONEY-SAVING OPTION

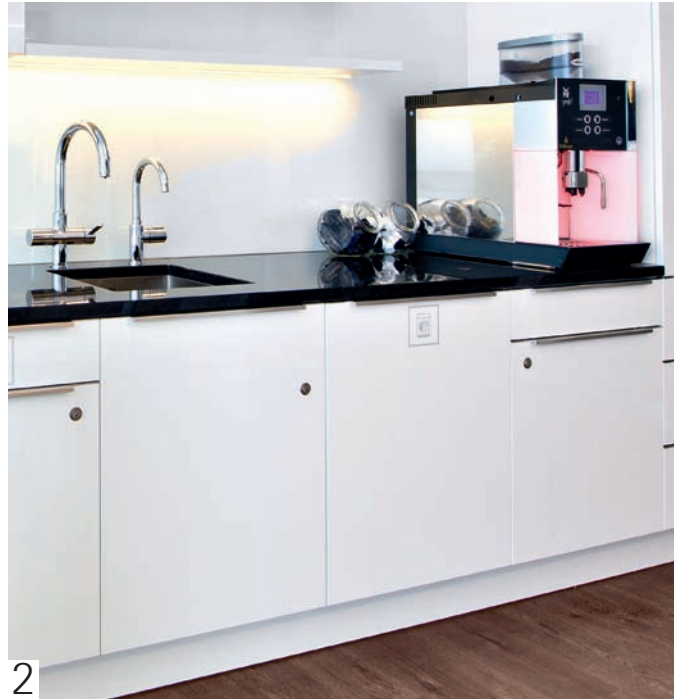
As you only heat the exact amount of water that you need, running a GROHE Red® faucet is cheaper than running a wasteful kettle.



Build a powerful team with GROHE Blue® and GROHE Red® combined

Combine both the GROHE Blue® and Red® systems for double the benefits. You can opt either for a GROHE Blue® Duo faucet in combination with a GROHE Red® Mono, or choose the GROHE Red® Duo and add a GROHE Blue® Mono. The choice is yours, the benefits will be felt throughout the company.

ALREADY @ HOME IN WELL-KNOWN COMPANIES



1 MIELE Headquarter, Guetersloh, Germany | 2 Vodafone Headquarter, Duesseldorf, Germany | 3 Vodafone Office, Munich, Germany



GROHE PREMIUM LIFESTYLE COLLECTIONS

THE SOURCE OF INDIVIDUALITY

At GROHE we understand that your kitchen is a reflection of you. It's more than just a space to cook and clean – it's where you express yourself, enjoy yourself and even stretch yourself. That's why we have created a range of products that allow your inner home chef to shine, with professional-grade functionality that won't let you down, tailored features to help you perform better and intelligent design that reflects your personal taste. With GROHE Premium Lifestyle Collections your kitchen can be as individual as you are.

A tantalising fusion of perfect design, innovative features and professional-level functionality, designed to enamour home chefs.





GROHE PREMIUM LIFESTYLE COLLECTIONS

GROHE
K7



54

GROHE
ZEDRA
TOUCH



62

GROHE
MINTA
TOUCH



64

GROHE
K7
FOOTCONTROL



68

GROHE
ESSENCE
FOOTCONTROL



70

GROHE
ZEDRA



72

GROHE
MINTA



76

GROHE
K4



84

GROHE
ESSENCE



86

GROHE
EUROCUBE



92

GROHE
AMBI



96

GROHE
PARKFIELD



98



