



 **HANSA**  
experience water

# HANSA FOR BATHROOM AND KITCHEN NEWS 2014



EXPERIENCE  
WATER —  
MORE THAN EVER  
BEFORE.



The "experience of water" is what HANSA promises – and this year yet again we keep that promise in full. With exciting new concepts for creative bathroom design.  
With intelligent new solutions for added safety, comfort and sustainability.  
With attractive new products for the bathroom and kitchen. And with **HANSASENSETION** – our entirely new product range featuring sensory electronic fittings for private bathrooms and public facilities.

Leading industry bodies have already recognised our achievements, including through the following highlight awards: **HANSATELA** side-operated, **HANSALOFT** side-operated and **HANSAMEDIJET FLEX** won the "iF product design award 2014" in recognition of their "added value design"; and **HANSAMEDIJET FLEX** and **HANSAMEDIPRO** also received the RAL Barrier-Free Quality Mark thanks to their special design concept.

Why don't you, too, let yourself be inspired, surprised and enthralled!

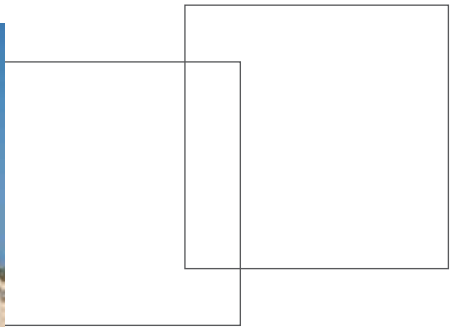


# TWO PHIL UNLIMITED DE

## X DESIGN PHILOSOPHY

Straight lines, design purism, reduced shapes, colours, materials: This is how the **X** bathroom presents itself. Understated with a twist of coolness, clarity, concentration.

Its architecture follows a strict logic structure – and **X/O** allows you to perfect this logic down to the very last detail.



**X O** On the following pages, this symbol indicates products and bathrooms that have been designed based on the **X** philosophy.

# OSOPHIES. SIGN OPTIONS.

## ○ DESIGN PHILOSOPHY

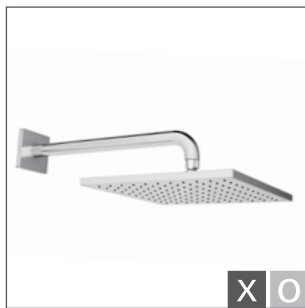
Walk in and feel relaxed. Sensual, inviting, personal: the ○ bathroom. It creates an atmosphere of warmth, harmony and relaxation; materials and shapes are pleasing on both the eyes and the hands. X/○ is able to project the philosophy of softness, calmness, gentleness to fittings throughout the bathroom.



This symbol indicates products and bathrooms that have been designed based on the ○ philosophy.



# THE X/O MODULES: SYSTEM W



The custom design concept can also be realised in every detail in the shower. Square or disk-shaped overhead showers are a key element of the characteristic look.



State-of-the-art HANSA concealed systems form the basis for the various design philosophies realised throughout the bathroom environment. HANSAMATRIX provides clearly defined, architectural solutions in X bathrooms. HANSAVAROX with its square or round collars is a universal solution for X and O bathrooms.

# ITH DESIGN FREEDOM.



The square X plates are design options. They enable washbasin fittings to be integrated into cubic bathroom designs.



With X or O basin solutions, you can either emphasise the clear and strong or the soft and rounded design aspects of a range of fittings to suit the overall design philosophy of the bathroom.





# FREE THINKING. STRAIGHT TALKING: HANSALOFT

HANSALOFT for the **X** bathroom is the perfect fitting for everyone who appreciates freedom in both the way they live and the way they view life. Challenging and thought provoking – with a formal determination that is rarely experienced. High-gloss surfaces, varying angle dimensions and perfect edges result in a functional work of art with an overwhelming presence.



Due to its impressive contours and unique spatial aura, the side-operated HANSALOFT is an essential element of the overall architectural concept in an **X** bathroom.



# FREEDOM THROUGH INTEGRATION: HANSALOFT

HANSALOFT for the **O** bathroom integrates harmoniously yet is a real eye-catcher. Obviously related to the side-operated version through its geometry and material properties, the gentle rounded shapes give this version the appearance of lightness and reserved elegance. The opposed alignment of the spout and lever axis provides a highly individual interpretation of the classic control concept.



Personal, natural, welcoming:  
The HANSALOFT **O** bathroom  
combines exterior design and  
well-equipped interior, linear  
architecture and homely ambience,  
clear structures and flowing shapes,  
which are easy on both your eyes  
and hands.





# SIDE-OPERATED. ULTRA MODERN.

Brilliantly designed: a side-mounted operating lever not only looks extravagant – it is also very practical. It helps to protect the mirror-finish chrome surface from water splashing off hands and as such makes it appear even more elegant and pristine.



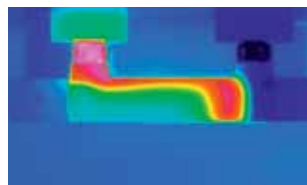
Characteristically beautiful, highly functional: the side-operated variants of **HANSARONDA** (top) and **HANSALIGNA** (bottom).

Award-winning  
design:  
HANSATELA

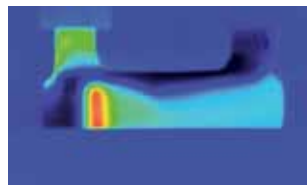


# PROVIDING AN ALL-ROUND GOOD FEELING: HANSAPRISMA.

Thanks to a function that sets standards in its class, the HANSAPRISMA range simultaneously makes having a bath and shower safer and more comfortable. **THERMO COOL** ensures that the outer metal casing hardly heats up. And the water is also always maintained at a pleasant temperature: A safety lock that is preset to 38°C provides reliable scalding protection. Important for use in public facilities: The HANSAPRISMA exposed thermostat is suitable for thermal disinfection.



Conventional thermostat



HANSAPRISMA

The thermal imaging camera shows: Compared to a conventional thermostat in this price segment, the heat development on the casing of the HANSAPRISMA thermostat is reduced considerably.



Visually attractive too:  
**HANSAPRISMA** matches both clear  
cubic styles and harmoniously  
circular forms.



# HANSAMIX: TRIED AND PROVEN. POPULAR. BETTER THAN EVER.



Being consistently better – that is the principle underlying the HANSAMIX. It is what has made it what it is: one of the most successful and popular of all HANSA fittings. Since its launch back in 1978, it has constantly embodied the key values underpinning HANSA: Solidity and safety, sophisticated technology, along with exceptional value and quality down to the finest detail. Now in its fourth generation, the HANSAMIX now features

- an updated design;
- with an expanded, now even more flexible range, including three washbasin variants;
- with larger projection, making it even more user-friendly;
- in new material quality for enhanced drinking water hygiene and safety.

HANSAMIX thus demonstrates yet again that it is a genuine classic. Consistently good. Better than ever before.







# MORE COMFORT IN THE XL CLASS.



Big is beautiful: HANSAPRIMO XL, HANSAVANTIS XL, HANSAPINTO XL and HANSATWIST XL are 20 mm higher than the basic version and so make optimal use of available space at the washbasin. The increased height also means more projection: You have more space beneath the tap, resulting in even greater freedom of hand movement and noticeably enhanced comfort.

The new HANSAVANTIS  
side-operated – from Autumn 2014.



The XL  
version of  
**HANSATWIST.**  
is available for  
both lever  
variants: solid  
(pictured) and  
loop.



# HANSAMEDICA: IDEAL FOR SPECIAL NEEDS.

**HANSAMEDICA** is a series of fittings which offers a wide range of beneficial features making it a highly versatile option for the care sector. The two variants of the one-hole fitting on the washbasin feature highly user-friendly projections (141 mm and 157 mm respectively), providing even more room for hands and enhanced comfort in everyday use. The spout of the 157 mm projection variant can also be swivelled 95° – a major functional benefit, especially in hospitals, where special demands are imposed with regard to handling of fittings!



Functional and economical: The **HANSAMEDICA** also impresses by its low water consumption.





HANSAMEDIPRO is available as a one-hole basin mixer as well as a wall-mounted fitting with three lever variants (object lever, object lever loop shape, object safety lever) and three spout lengths.

# AWARD-WINNING COMFORT: HANSAMEDIPRO.

Developed in line with the latest findings in gerontology, the **HANSAMEDIPRO** features outstanding levels of safety user-friendliness and drinking water hygiene. Interchangeable lever variants make the already double-award-winning special fitting highly versatile – for the public sector as well as in supervised residential facilities.



The new **HANSACARE** exposed thermostat, with concealed connections and a new connection technique, features a special flow control knob, temperature limiter and temperature selector knob. **HANSACARE** is suitable for simple thermal disinfection in accordance with the DVGW W 551 standard without handle fitting.

# EVERYTHING UNDER CONTROL: HANSAMEDIJET FLEX.

HANSAMEDIJET FLEX is designed specially for the care sector, and meets high functional demands. The ergonomically designed, 360° rotatable handle facilitates easy use of the hand shower for all generations. The HANSAPROTEC system guarantees maximum safety and comfort – and the pleasure of a perfect shower.



The HANSAMEDIJET FLEX shower base can be removed for easy cleaning – so delivering better hygiene and longer service life.







The diameter of the  
HANSAMEDIJET shower heads is  
100 mm, 40 individual soft jets treat  
you to the perfect shower sensation.



# *e*LECTRONIC. *e*FFICIENT. *e*FORTLESSLY CLEVER: HANSASENSE*TION*.

HANSASENSE*TION* sensory fittings make life a little bit nicer and easier each day. Their intelligent design makes them safe, simple and hygienic to use, while at the same time minimising consumption of water and energy.

Sensory fittings also stay clean longer, and need less cleaning generally.

The HANSASENSE*TION* range comprises attractive product series for modern private bathrooms and for public facilities.

Versions powered by a standard 6V lithium battery and via a 230/12 V mains adapter are available.





# HANSAFIT: MATCHING ALL.

The washbasin fittings from the HANSAFIT range will surprise you with the variety of options available. In addition to the sensory model, there are three classic lever mixer designs with a separate Tiptronik-Flex push button for simple remote control and a hand shower providing a mobile source of water. One common feature is the ergonomically optimised design concept that was developed in conjunction with GGT Gesellschaft für Gerontotechnik® (German Association for Gerontechnology). Thanks to the high-quality materials used, all of the water-bearing parts of HANSAFIT have a low lead content thus ensuring excellent drinking water hygiene.



Classic, with soft-touch  
operating lever



With Tiptronik-Flex remote  
actuator



With hand shower





HANSAFIT washbasin fittings are easy for all generations to use in comfort. This version provides a flow of water without having to touch the fitting. The complete series is a joy, not only thanks to its timeless design; it also offers a range of surprising and impressively practical additional features which make day-to-day life more agreeable.



The hand shower has an EcoFlow function built-in to the shower head. This controls the flow of water without impairing the shower experience.



# HANSAFIT: MORE COMFORT FOR THE SHOWER AND BATHROOM.



The HANSAFIT shower rail range is suitable for private bathrooms as well as exhibition and CARE facilities. The particularly strong rail provides security and an all-round good feeling. This range can be perfectly combined with HANSAFIT shower or bath thermostats. The non-slip control elements in contrasting colours have a soft touch surface finish making them safe to operate. **THERMO COOL** ensures that the casings do not get hot.







# HANSA**FORSENSES**: SENSUAL AND FUNCTIONAL.



Enjoy a luxurious shower with an all-round good feeling: The luxury spa shower system **HANSA**FORSENSES**** will ensure you can enjoy this every day. A practical soap and shampoo storage, large hydra rain shower and hand shower with massage function will pamper you, while the intelligent water saving system ensures that having a shower is economical. The unique Tiptronik button uses colour signals to indicate the perfect length of a shower and simultaneously controls the flow volume. This button is also used to start the flow of water for exactly four minutes, to stop it intermittently or extend it at any time. The thermostat enables you to set the exact water temperature that is required, while a safety lock that is preset to 38°C provides maximum protection.



Multi-functional: You can switch from overhead to hand shower using the Tiptronik button too.

# HANSA**CONCERTO**: ONE RANGE, LOTS OF OPTIONS.



Whatever you expect from a sensory fitting – **HANSA**CONCERTO**** will meet your requirements. The range includes a variety of models to meet very different needs. **HANSA**CONCERTO**** is available as a pre-tempered water fitting or can be converted into a cold water fitting that is either battery-operated or connected to the mains power supply. One version of the flexible series models can also be implemented as a modern free-standing fitting on pedestal washbasins by increasing the height of the base. Thanks to its range of possible options and functions, **HANSA**CONCERTO**** is convincing in private bathrooms as well as in public spaces.



# HANSALANO: STYLISH AND MINIMALIST.



It has everything you need: The timeless modern design of **HANSALANO** is an elegant, user-friendly solution for your private bathroom or (as a second fitting) for your kitchen. The sensory function of the **HANSALANO** ensures that the chrome surface is not covered in annoying finger-prints. Not only does this save time on cleaning, but also guarantees good hand hygiene. This mixer fitting is operated with a 6 V battery. The water temperature can be set simply and accurately to save water and energy.



# HANSAFIT FOR THE KITCHEN: INNOVATIVE MULTI-TALENT.

Thought-out to the smallest detail: HANSAFIT has two ergonomically designed, easy-grip levers with which you can easily adjust the flow rate of cold and warm water. Thanks to the additional sensory function of the spout, that can be swivelled by 120°, pre-tempered water will flow out for 10 seconds – perfect for quickly washing your hands and maintaining a hygienic working environment. The temperature is preset via the anthracite-coloured ring and shown in the display. The temperature display issues a warning if the water is too hot, thus ensuring optimum safety.



HANSAFIT: Hygienically flawless  
and also available with appliance  
shut-off valve.





# PURE WATER. PURE ENJOYMENT: HANSA**PROTEC**

Our new kitchen fittings help preserve the quality of your drinking water. As the material we exclusively use a special HANSA brass alloy which is highly resistant to dezincification and corrosion. All surfaces coming into contact with drinking water are free of nickel coating.

The HANSA**PROTEC** system additionally signifies that all a product's brass components coming into contact with drinking water have a minimal lead content of less than 0.3 %. The WATER SAFE Hitec functional core is a further guarantee of optimum water quality. Your drinking water remains safe and clean at all times.





# HANSA|LIVING: VERSATILE KITCHEN CONCEPTS

The characteristic **HANSA|LIVING** series meet unique aesthetic and functional demands.

Various series designs and versions – e.g. with pull-out showers and side operation – enable the realisation of bespoke practical solutions.

**HANSA|LIVING** series offer optimum functionality and perfect comfort.

High-quality materials and innovative technologies guarantee maximum safety and drinking water hygiene.





NEW



HANSALIGNA



HANSASTELA



HANSARONDA



HANSARONDA

# HANSA|HOME: CLASSIC KITCHEN FITTINGS

Thanks to their ultra-modern functions, the **HANSA|HOME** series focus on the core products for classic kitchens. The programme includes a wide selection of proven, universal range of fittings with traditional and modern design elements. All the **HANSA|HOME** series combine comfort of use with top HANSA quality. High-quality materials ensure maximum safety and drinking water hygiene.



HANSADISC



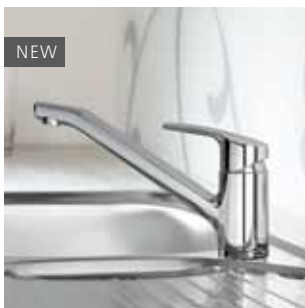
HANSAMIX



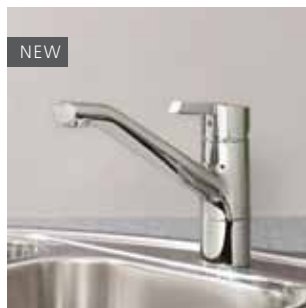
HANSAFORM



HANSAPICO



HANSAPOLO



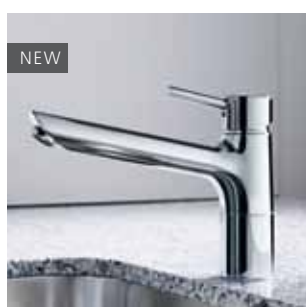
HANSAPINTO



HANSATWIST



HANSAPRIMO



HANSAVANTIS

# HANSA – ALWAYS THERE FOR YOU.

## HANSA HEAD OFFICE

HANSA Metallwerke AG  
Head Office  
Sigmaringer Str. 107  
70567 Stuttgart, Germany  
Tel.: +49 711 1614 0  
Fax: +49 711 1614 368  
Customer Service Centre  
Tel.: +49 711 1614 888  
Fax: +49 711 1614 801  
[info@hansa.de](mailto:info@hansa.de)

## AQUAPUNKT<sup>®</sup>

Rediscover water.  
Visit us in Stuttgart.  
[www.aquapunkt.com](http://www.aquapunkt.com)

[www.hansa.com](http://www.hansa.com)



a member of  orasgroup