

# Hydraulic Tiles

PORCELÁNICO ESMALTADO / GLAZED PORCELAIN TILE  
CEMENTO / CEMENT

8"x8" / 20x20



Mix Norfolk 20x20

V2010



Severn White  
20x20 V2010



Severn Light Grey  
20x20 V2010



Severn Beige  
20x20 V2010



Severn Dark Grey  
20x20 V2010



Mix Somerset 20x20

V2010



Severn White  
20x20 V2010



Severn Light Grey  
20x20 V2010



Severn Beige  
20x20 V2010



Severn Dark Grey  
20x20 V2010



PACKING		cajas/box		palet/pallets		
formato/size	piezas/pieces	m <sup>2</sup> /sqm	peso/weight	cajas/boxes	m <sup>2</sup> /sqm	peso/weight
20x20 (10mm)	27	1,080	24,58	48	51,84	1200



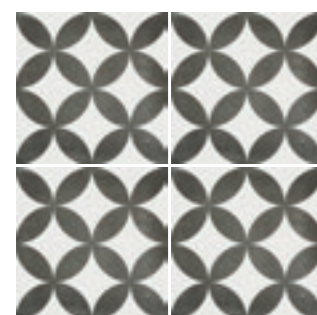
# Hydraulic Tiles

8"x8" / 20x20

PORCELÁNICO ESMALTADO / GLAZED PORCELAIN TILE  
CEMENTO / CEMENT



Yorkshire 20x20  
V2010



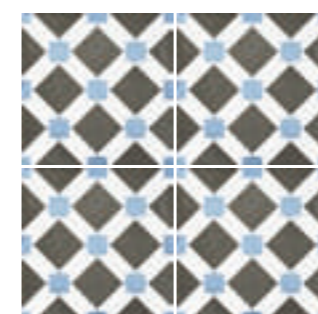
Surrey 20x20  
V2010



Midlands 20x20  
V2010



Essex 20x20  
V2010



PACKING				cajas/box		palet/pallets	
formato/size	piezas/pieces	m <sup>2</sup> /sqm	peso/weight	cajas/boxes	m <sup>2</sup> /sqm	peso/weight	
20x20 (10mm)	27	1,080	24,58	48	51,84	1200	



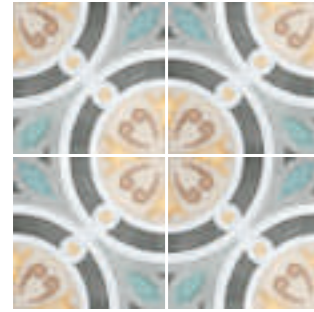
# Hydraulic Tiles

8"x8" / 20x20

PORCELÁNICO ESMALTADO / GLAZED PORCELAIN TILE  
CEMENTO / CEMENT



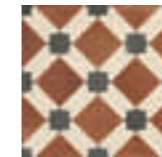
Cumbria 20x20  
V2010



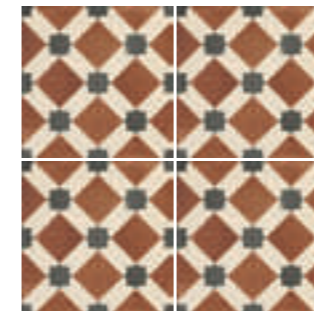
Dorset 20x20  
V2010



Cornwall 20x20  
V2020



Kent 20x20  
V2020



PACKING		cajas/box		palet/pallets		
formato/size	piezas/pieces	m <sup>2</sup> /sqm	peso/weight	cajas/boxes	m <sup>2</sup> /sqm	peso/weight
20x20 (10mm)	27	1,080	24,58	48	51,84	1200