



**ice**  
wall tiles







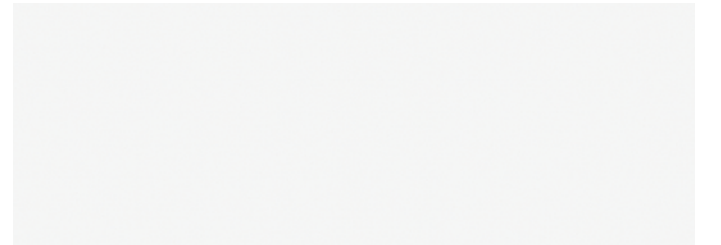
**ice** wall tiles



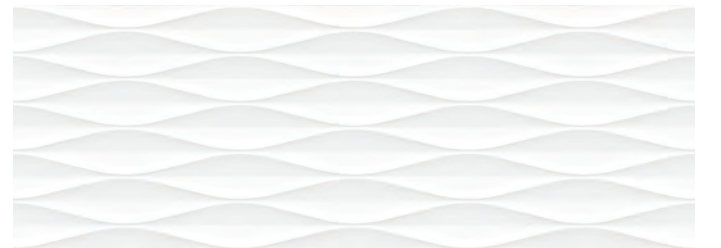
ICE 33,3x100 Fold

ALPINE 90x90 AS Grey





ICE 33,3x100



ICE 33,3x100 Diamond



DOWNTOWN 4D 100x100 SP Anthracite



ICE

ICE Waves

ICE Fold

ICE Diamond



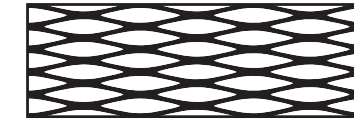
ICE



33,3 \* 100 \* 7 cm | 13 \* 39"

RECTIFIED	EXTRAWHITE
	<b>BN4</b>
ICE	30853

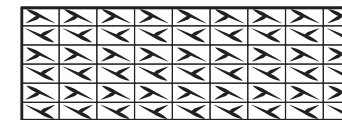
ICE DIAMOND



33,3 \* 100 \* 0,86 cm | 13 \* 39"

RECTIFIED	EXTRAWHITE
	<b>BN5</b>
DIAMOND	30858

ICE FOLD



33,3 \* 100 \* 0,86 cm | 13 \* 39"

RECTIFIED	EXTRAWHITE
	<b>BN5</b>
FOLD	30859

ICE WAVES



33,3 \* 100 \* 0,86 cm | 13 \* 39"

RECTIFIED	EXTRAWHITE
	<b>BN5</b>
WAVES	30857

CARACTERÍSTICAS TÉCNICAS | TECHNICAL CHARACTERISTICS

joint	wall tiles	gloss	thickness

EMBALAJE | PACKING

(Los pesos aquí reflejados pueden sufrir ligeras variaciones en función del lote de producción. Weights shown here may slightly vary depending on the production lot.)

Formato   Sizes	Cajas   Boxes			Pallet				Cont./20'	Cont./20'
	Piezas	m2/ sq.m	kg	Cajas	m2/ sq.m	kg	Tamaño cm aprox.	m2/ sq.m	m2/ sq.m
33,3 * 100 * 0,7	6	2	26,60	24	48	663	118 * 110 * 48	1556,56	1737,56
33,3 * 100 * 0,86	5	1,67	22,20	24	40,08	558	118 * 110 * 48	1544,30	1723,87
<b>inch</b>	<b>units</b>	<b>ft2</b>	<b>lb</b>	<b>Boxes</b>	<b>ft2</b>	<b>lb</b>	<b>Sizes Inch approx.</b>	<b>ft2</b>	<b>ft2</b>
13 1/8 * 39 3/8 * 1/4	6	21,53	58,65	24	516,67	1461,92	46 7/16 * 43 5/16 * 18 7/8	16754,82	18703,06
13 1/8 * 39 3/8 * 5/16	5	17,98	48,95	24	431,42	1230,39	46 7/16 * 43 5/16 * 18 7/8	16622,86	18555,75