

# INDUSTRY



INDUSTRY SILVER ARR.1/ 9X20,5 · INDUSTRY SILVER ARR.2/9X20,5

These industrial-look wood-effect tiles stand out for their neutral colours and worn aged appeal. The collection's wood chevron and hexagon formats on a porcelain tile body can be mixed and matched to raise the art of marquetry to new heights.

Madera cerámica de tendencia industrial pintada en tonos neutros y desgastada por el tiempo. Piezas chevron y hexágonos fabricados en porcelánico que invitan a la combinabilidad y a llevar la marquetería a una nueva dimensión.



INDUSTRY WHITE ARR.1/ 9X20,5 · INDUSTRY WHITE ARR.2/9X20,5 · INDUSTRY WHITE HEXA/17,5X20

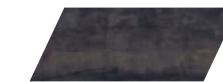


INDUSTRY WHITE ARR.1/9x20,5 · INDUSTRY WHITE ARR.2/9x20,5 · INDUSTRY WHITE HEXA/17,5x20

# INDUSTRY



26119 INDUSTRY BLACK ARR.1/9x20,5  
Q22 (9x20,5 cm) (3 9/16 x 8 1/16")  
72 patterns



26116 INDUSTRY BLACK ARR.2/9x20,5  
Q22 (9x20,5 cm) (3 9/16 x 8 1/16")  
72 patterns



26120 INDUSTRY SILVER ARR.1/9x20,5  
Q22 (9x20,5 cm) (3 9/16 x 8 1/16")  
72 patterns



26114 INDUSTRY SILVER ARR.2/9x20,5  
Q22 (9x20,5 cm) (3 9/16 x 8 1/16")  
72 patterns



26115 INDUSTRY WHITE ARR.1/9x20,5  
Q22 (9x20,5 cm) (3 9/16 x 8 1/16")  
72 patterns



26117 INDUSTRY WHITE ARR.2/9x20,5  
Q22 (9x20,5 cm) (3 9/16 x 8 1/16")  
72 patterns



26122 INDUSTRY BLACK HEXA/17,5x20  
Q23 (20x17,5 cm) (7 7/8 x 6 7/8")  
36 patterns



26121 INDUSTRY SILVER HEXA/17,5x20  
Q23 (20x17,5 cm) (7 7/8 x 6 7/8")  
36 patterns



26123 INDUSTRY WHITE HEXA/17,5x20  
Q23 (20x17,5 cm) (7 7/8 x 6 7/8")  
36 patterns

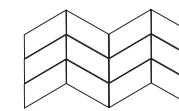
## TECHNICAL CHARACTERISTICS

	CERAMIC	SHOWER WALL	SHOWER FLOOR	INDOOR	OUTDOOR	SHADE VARIATION	MATT	GLOSS	HANDMADE DECORS	CLEANING NON-ABRASIVE	MESH	FLOOR TRAFFIC	ANTISLIP				SELF UNIT	SELF m <sup>2</sup>	PIECES m <sup>2</sup>	PIECES sq f	PIECES BOX	m <sup>2</sup> BOX	sq ft BOX	WEIGHT BOX	WEIGHT BOX (lb)	BOXES PALLET	m <sup>2</sup> PALLET	sq ft PALLET	CHP SIZE	THICKNESS (mm)	THICKNESS (inch)
													DIN 51130	UNE-EN 12633	BS 7076-2	ANSI A137.1															
IND. HEXA	•	•	•	•	•	•	•	•	•	•	•	•	R10	C2	+36WET	>0,42	•	•	29	2.65	25	0.71	9.42	18.225	40.1	80	56.8	611.39	•	9	0.35
IND. ARR.1	•	•	•	•	•	•	•	•	•	•	•	•	R10	C2	+36WET	>0,42	•	•	54	5.04	54	1	10.72	22.83	50.23	60	60	645.83	•	9	0.35
IND. ARR.2	•	•	•	•	•	•	•	•	•	•	•	•	R10	C2	+36WET	>0,42	•	•	54	5.04	54	1	10.72	22.83	50.23	60	60	645.83	•	9	0.35

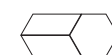
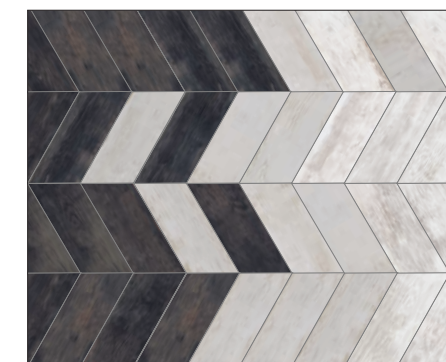
## PACKING



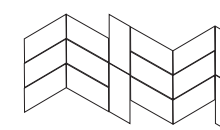
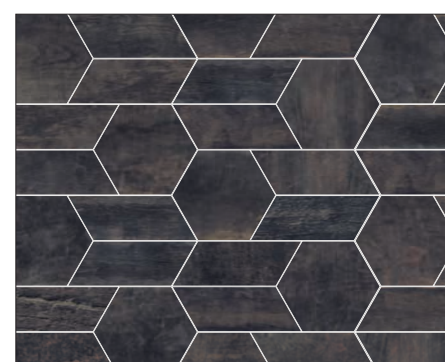
PIECES 1m<sup>2</sup>  
 42 pieces,  
 INDUSTRY HEXA/17,5x20



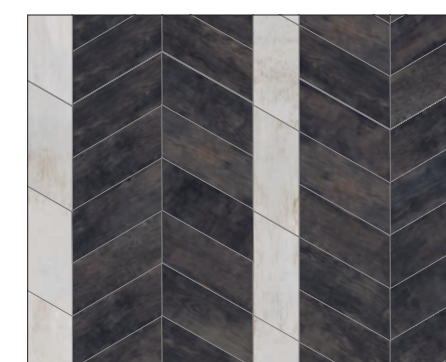
PIECES 1m<sup>2</sup>  
 33 pieces,  
 INDUSTRY ARR.1/9x20,5  
 33 pieces,  
 INDUSTRY ARR.2/9x20,5



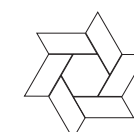
PIECES 1m<sup>2</sup>  
 19 pieces,  
 INDUSTRY HEXA/17,5x20  
 18 pieces,  
 INDUSTRY ARR.1/9x20,5  
 18 pieces,  
 INDUSTRY ARR.2/9x20,5



PIECES 1m<sup>2</sup>  
 33 pieces,  
 INDUSTRY ARR.1/9x20,5  
 33 pieces,  
 INDUSTRY ARR.2/9x20,5



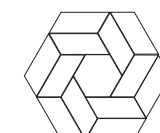
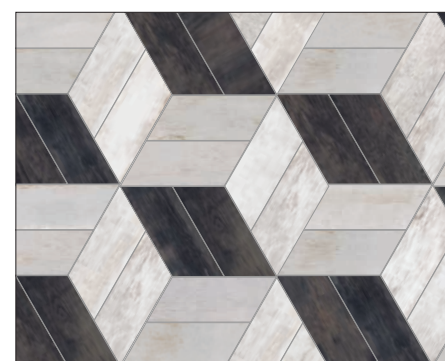
PIECES 1m<sup>2</sup>  
 65 pieces,  
 INDUSTRY ARR.2/9x20,5



PIECES 1m<sup>2</sup>  
 14 pieces,  
 INDUSTRY HEXA/17,5x20  
 44 pieces,  
 INDUSTRY ARR.1/9x20,5



PIECES 1m<sup>2</sup>  
 65 pieces,  
 INDUSTRY ARR.2/9x20,5



PIECES 1m<sup>2</sup>  
 4 pieces,  
 INDUSTRY HEXA/17,5x20  
 28 pieces,  
 INDUSTRY ARR.1/9x20,5  
 28 pieces,  
 INDUSTRY ARR.2/9x20,5

