

# IRRIDIS



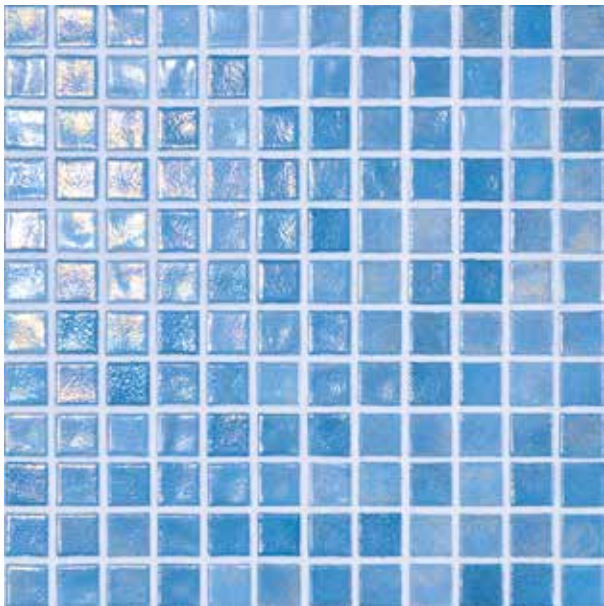
A close-up photograph of several peacock feathers. The feathers are arranged in a way that shows their intricate structure and vibrant colors. The most prominent feature is the iridescent 'eye' pattern, which consists of concentric rings of color: a dark blue center, followed by a bright cyan ring, then a golden-yellow ring, and an outer ring of reddish-brown. The background of the feathers is a mix of green and brown tones. The lighting is soft, highlighting the fine details of the feather barbs.

# mosavit Iridis



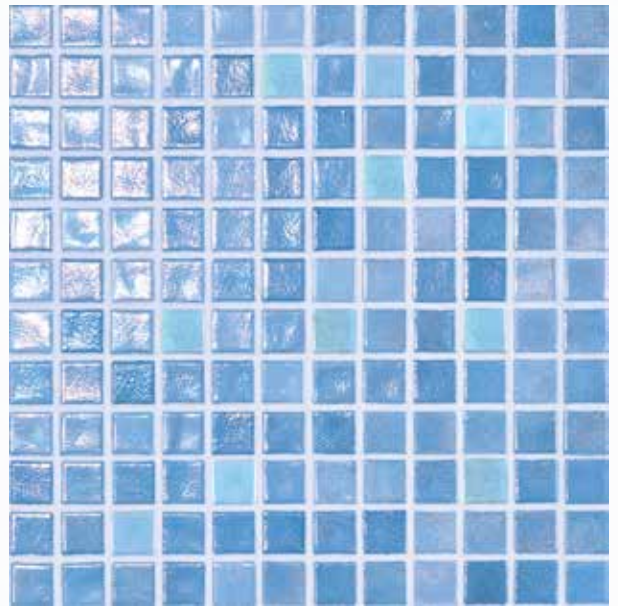


*Iridis 21*



**IRIDIS 21**

G-2050



**IRIDIS 21+ FOSVIT**

G-2380





IRIDIS 21+ FOSVIT / CON LUZ

DAY LIGHT



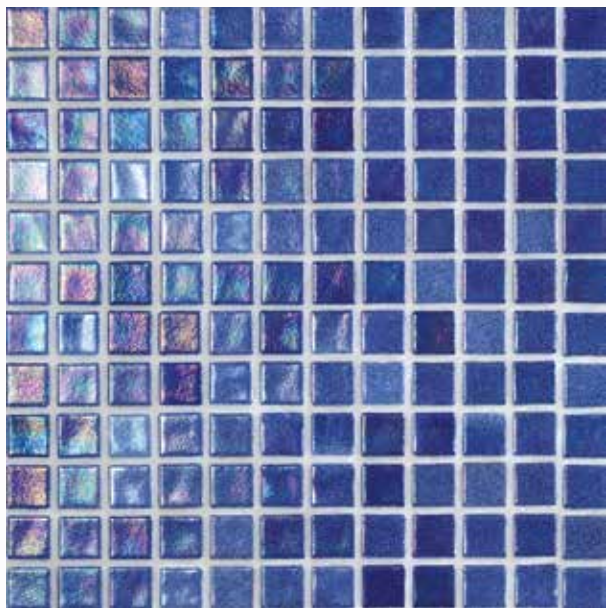
IRIDIS 21+ FOSVIT / SIN LUZ

GLOW IN THE DARK



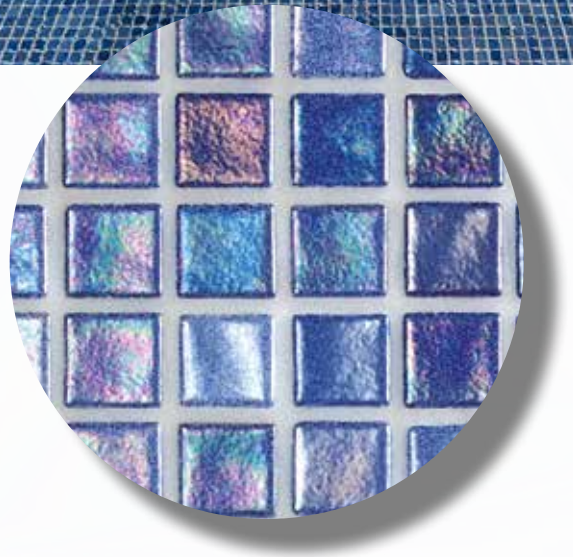


Iridis 22



IRIDIS 22

G-2050





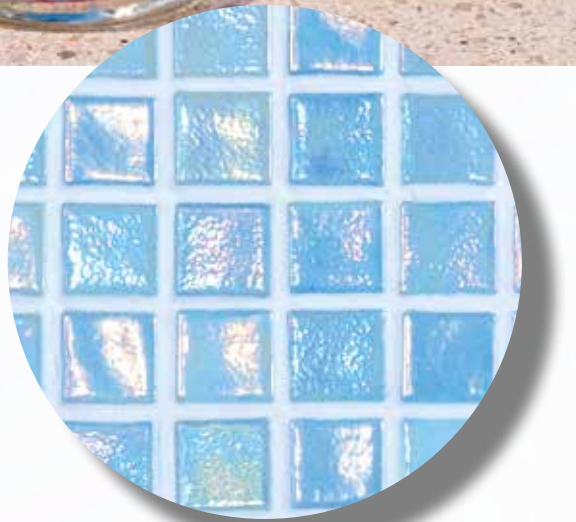


Iridis 23



IRIDIS 23

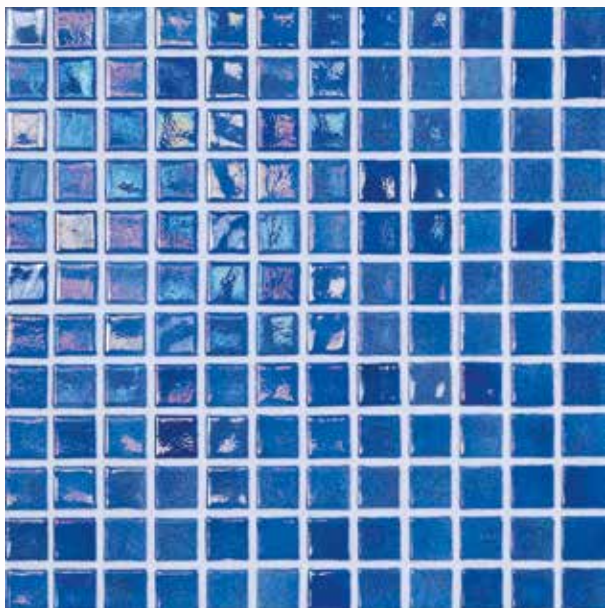
G-2050





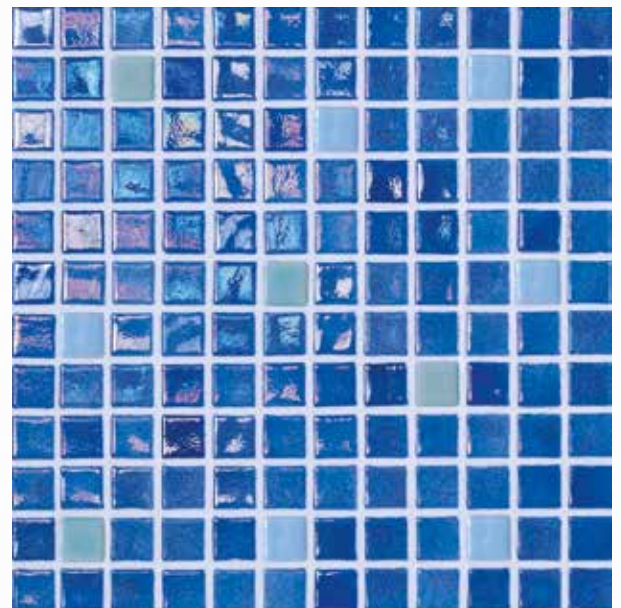


Iridis 24



**IRIDIS 24**

G-2050



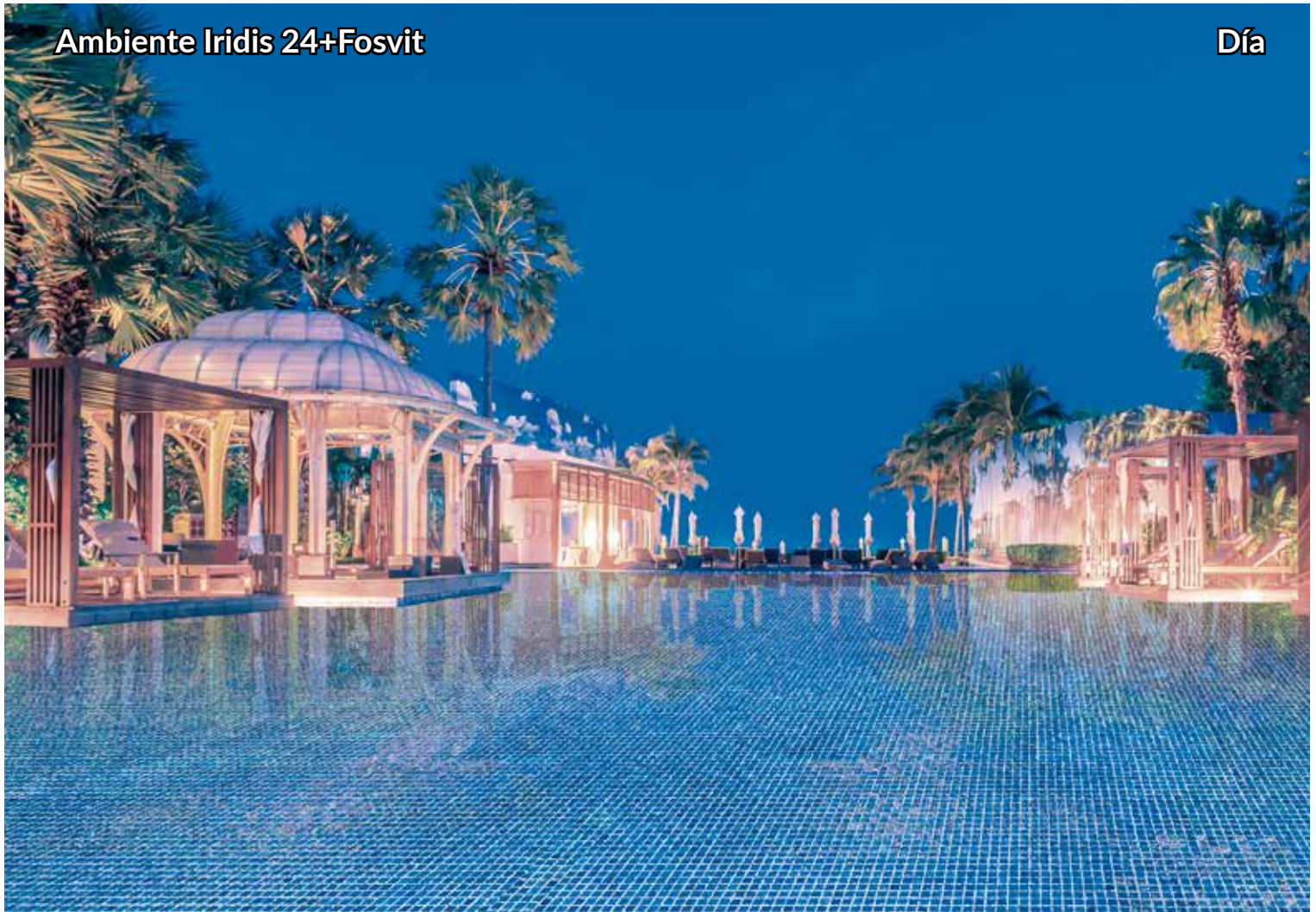
**IRIDIS 24+ FOSVIT**

G-2380



Ambiente Iridis 24+Fosvit

Día

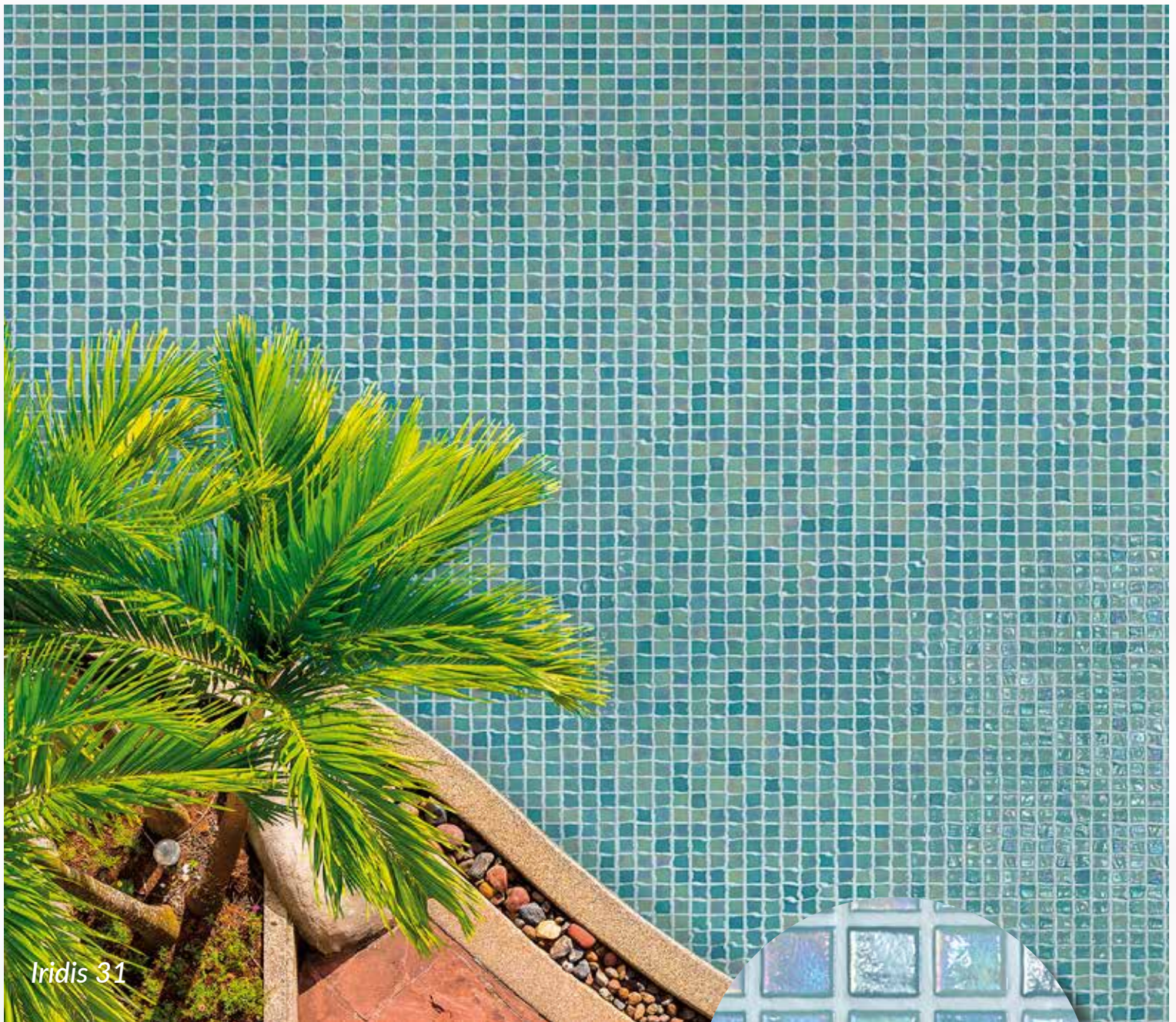


Ambiente Iridis 24+Fosvit

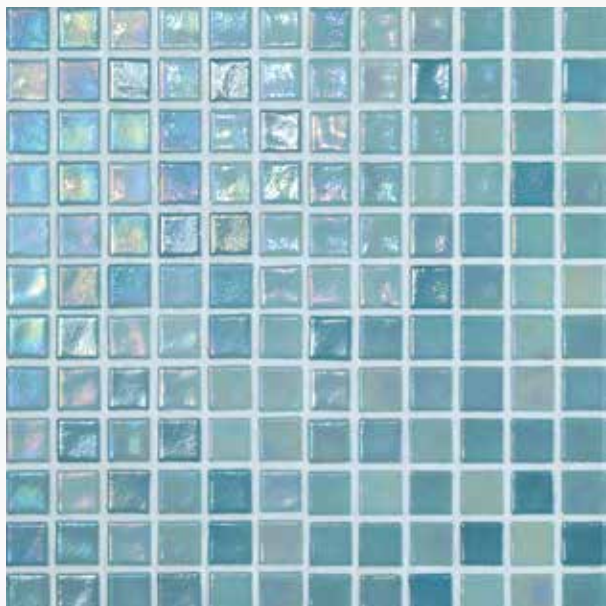
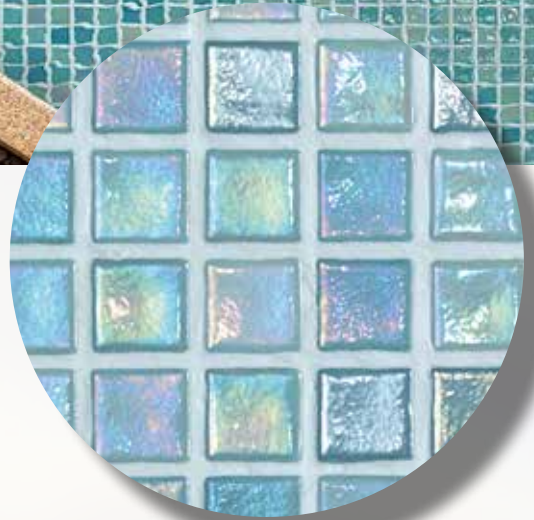
Noche







Iridis 31



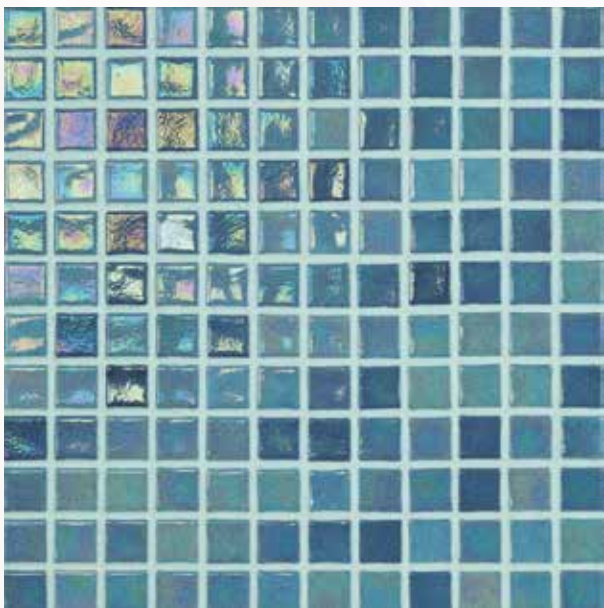
**IRIDIS 31**

G-2050



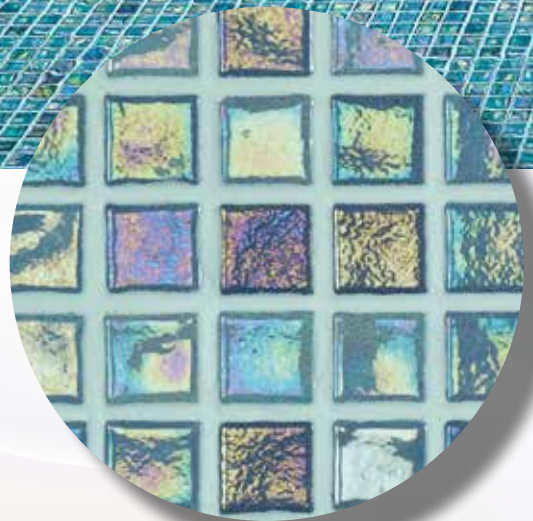


Iridis 33



IRIDIS 33

G-2050





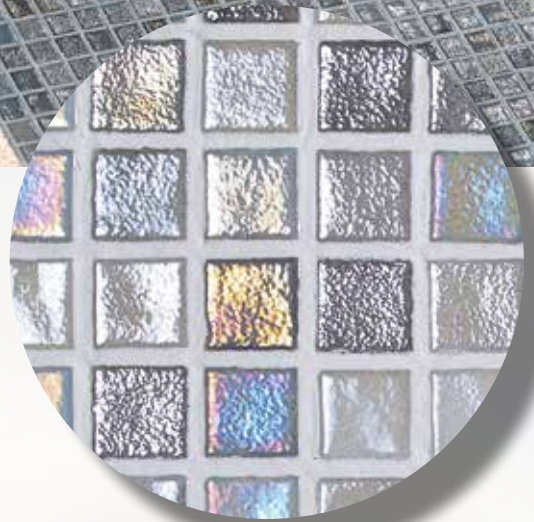


Iridis 41



**IRIDIS 41**

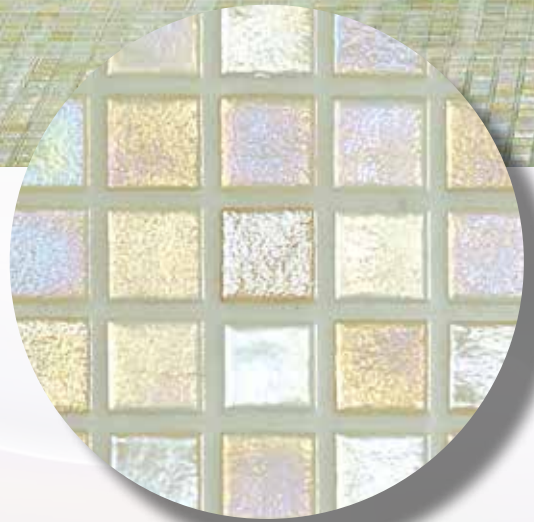
G-2050







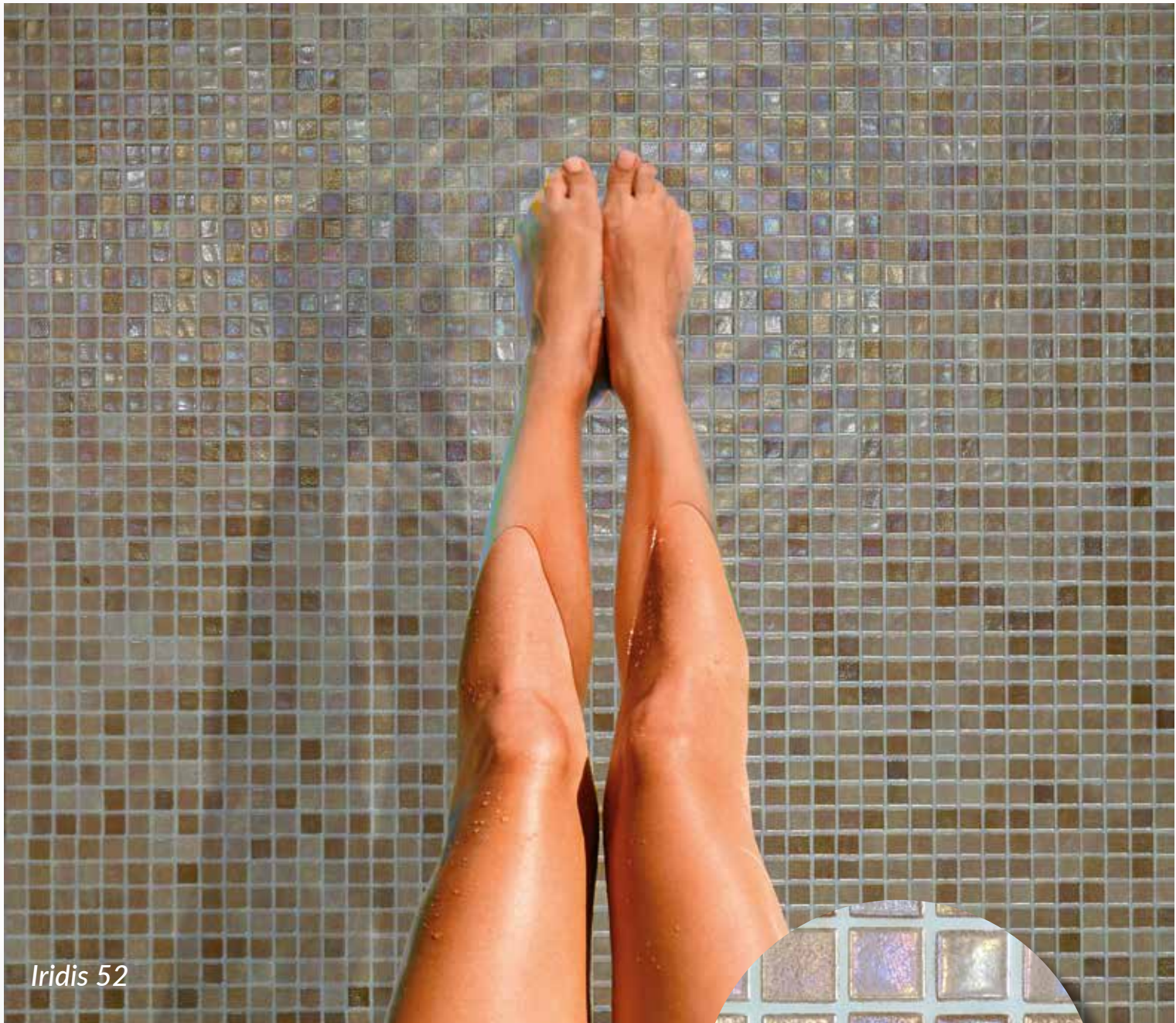
Iridis 51



**IRIDIS 51**

G-2050



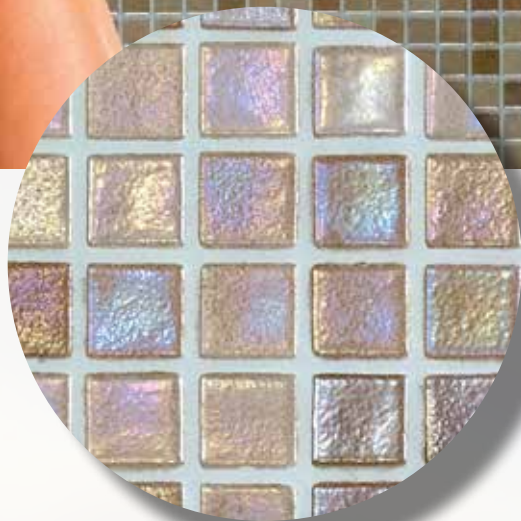


*Iridis 52*

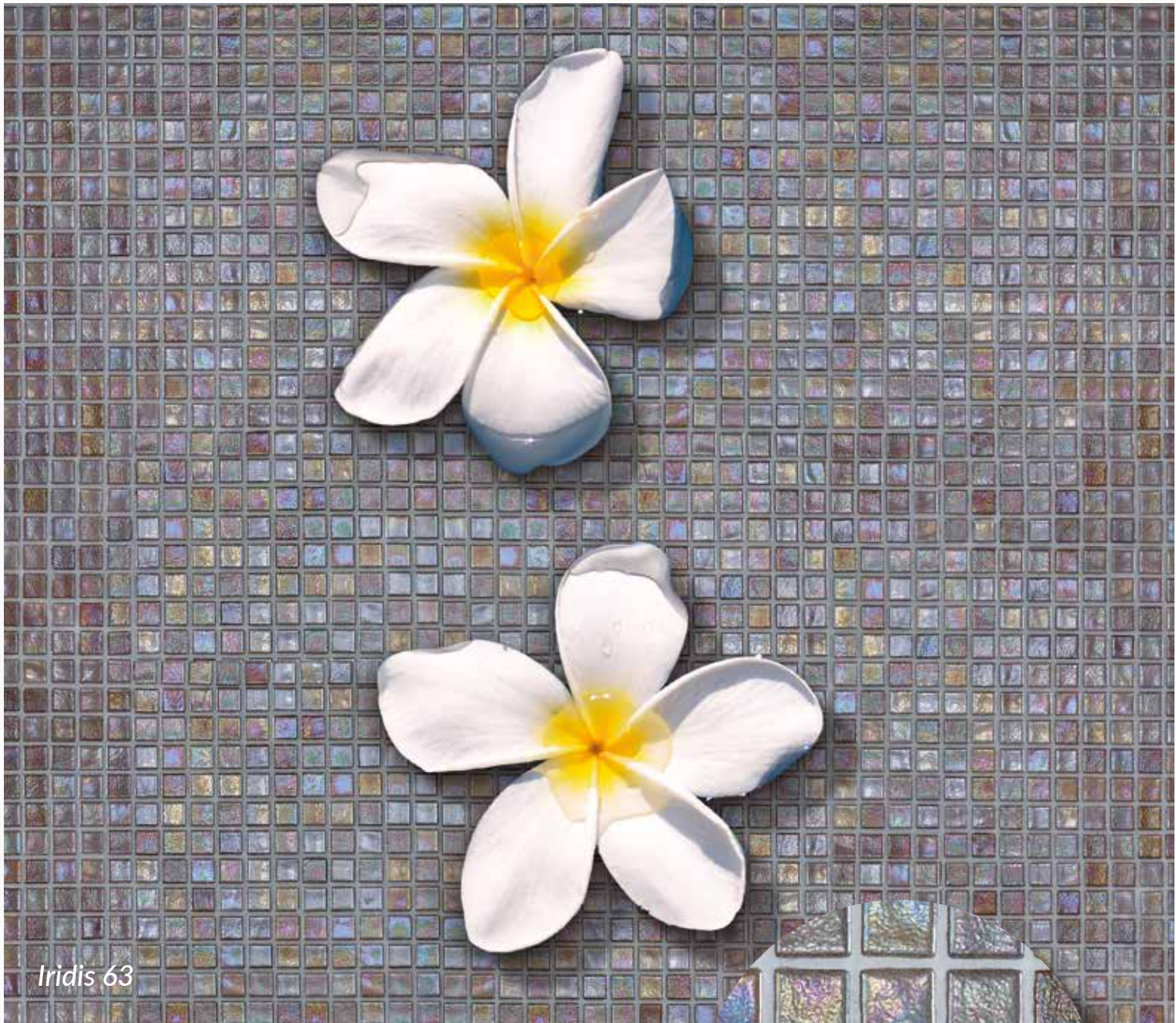


**IRIDIS 52**

G-2050





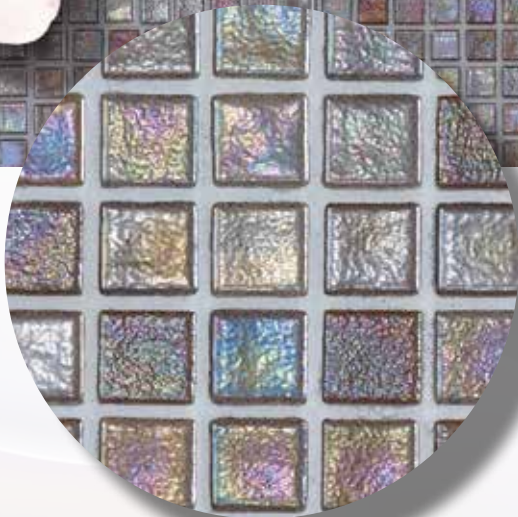


Iridis 63

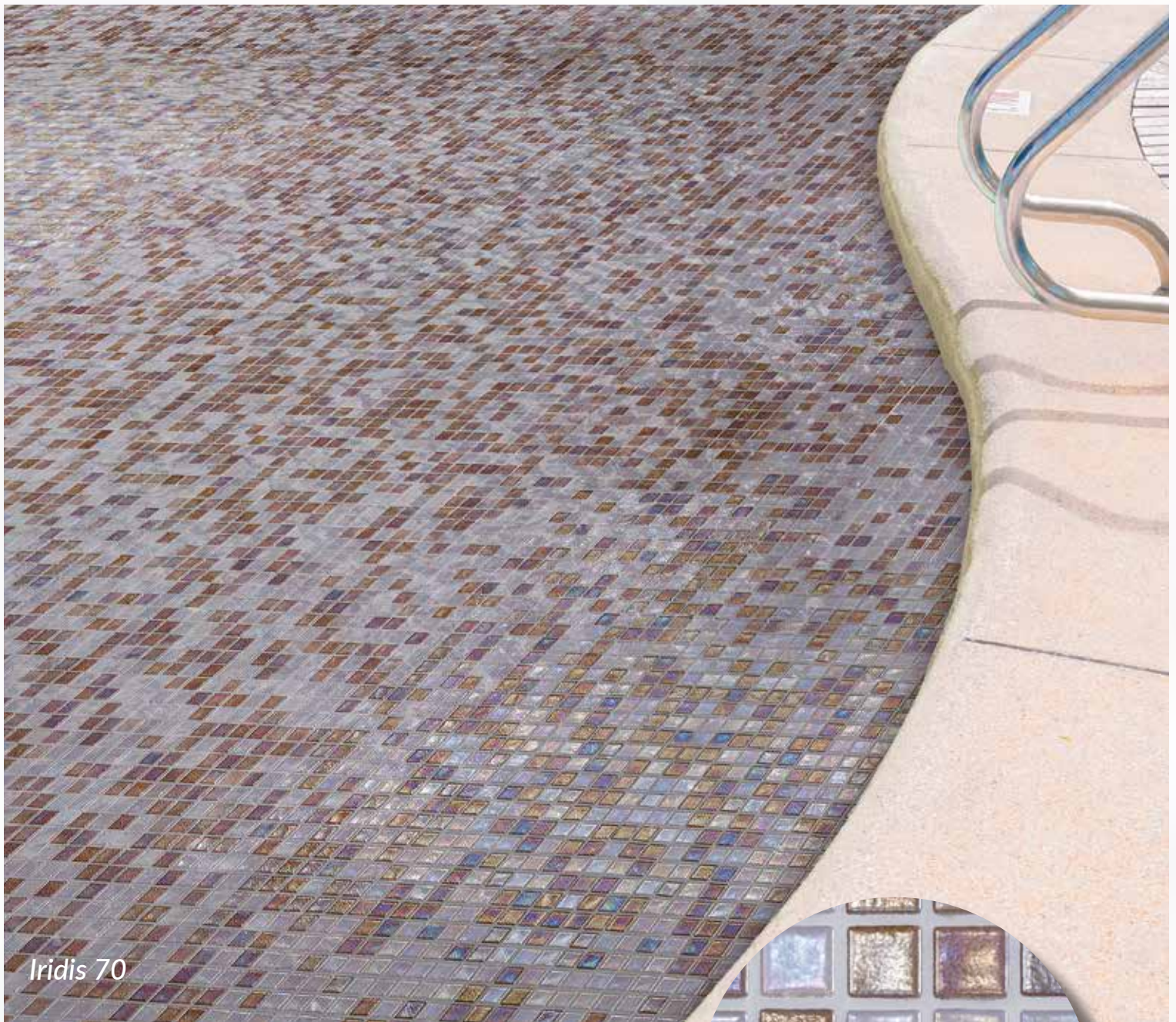


IRIDIS 63

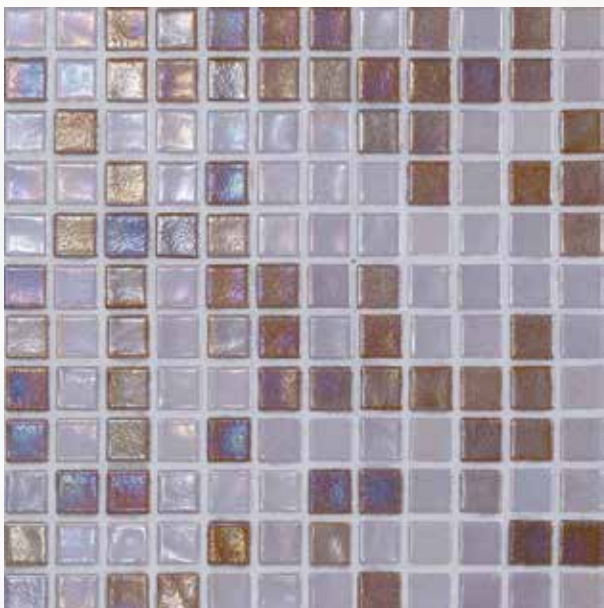
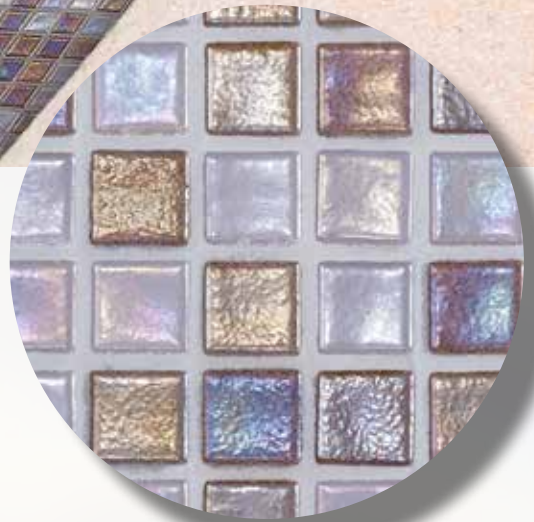
G-2050







Iridis 70



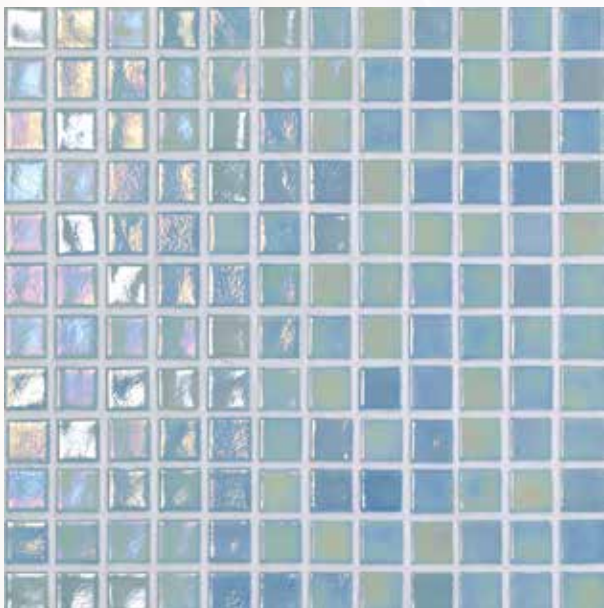
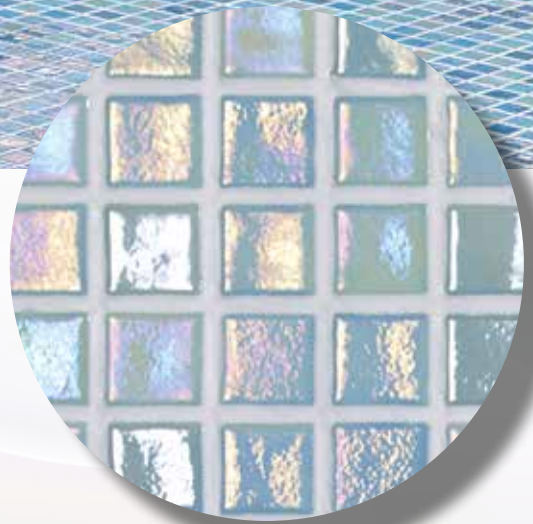
**IRIDIS 70**

G-2050





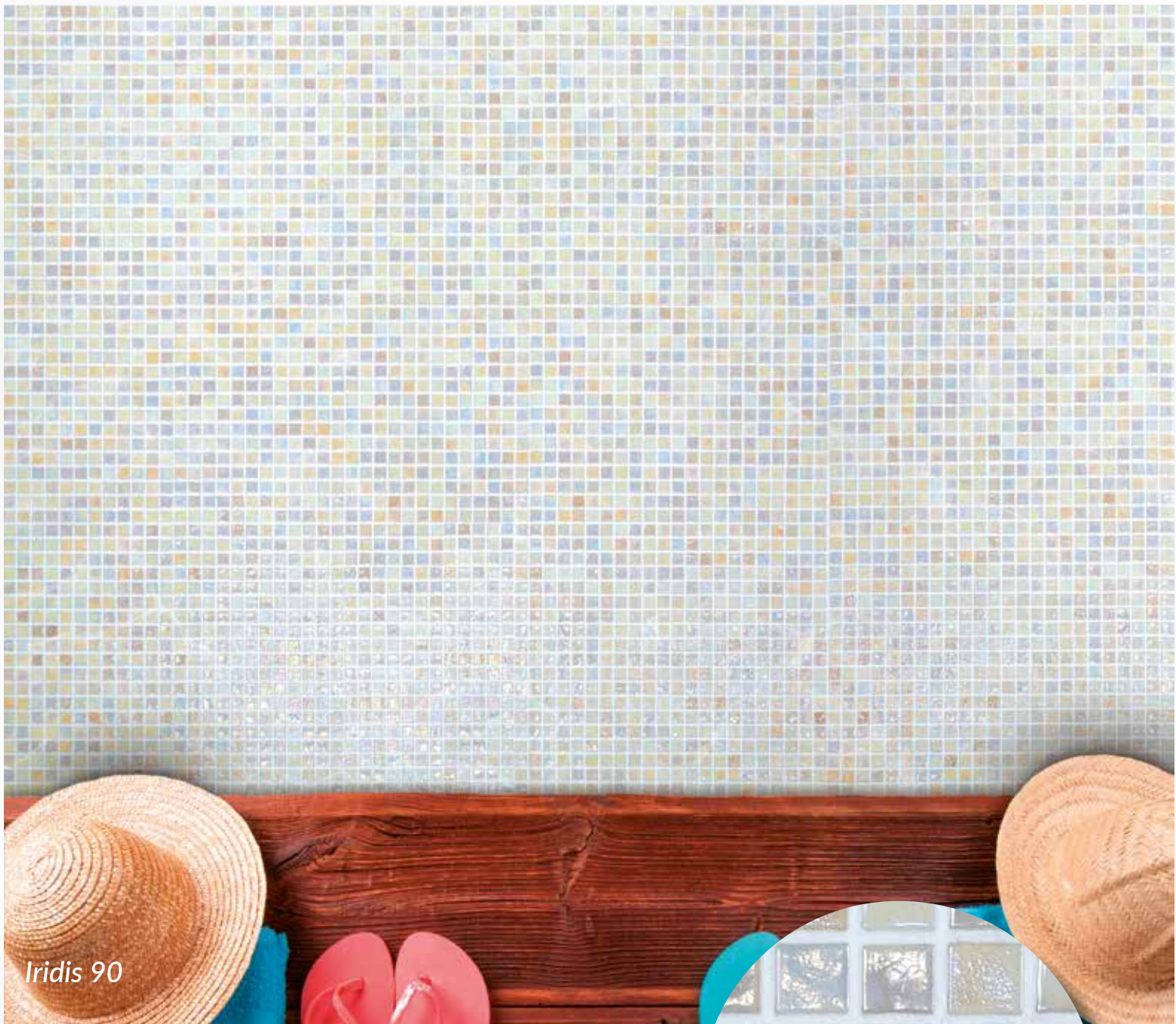
Iridis 80



**IRIDIS 80**

G-2050





Iridis 90



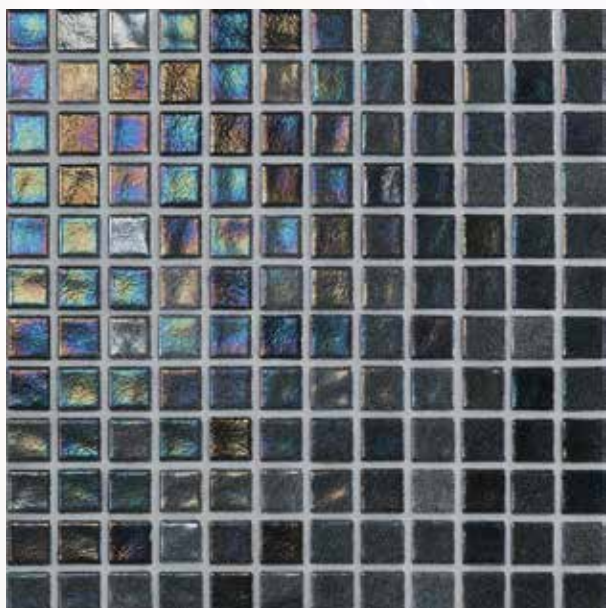
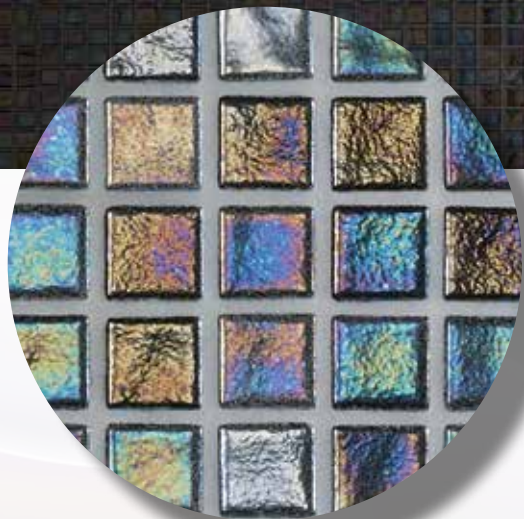
IRIDIS 90

G-2050





Iridis 91



IRIDIS 91

G-2050