

GRES PORCELÁNICO RECTIFICADO  
RECTIFIED PORCELAIN TILES  
GRÈS CÉRAMÉ RECTIFIÉ

GRES PORCELÁNICO RECTIFICADO  
RECTIFIED PORCELAIN TILES  
GRÈS CÉRAMÉ RECTIFIÉ

# K-SINTEX

**60x120**  
23,62"x47,24"

**37,5x75**  
14,76"x29,53"

**20x120**  
7,87"x47,24"

**30x60**  
11,81"x23,62"



Rvto / Wall / Rvtm: KONCEPT NÁCAR 37.5X75  
Pvto / Floor / Sol: K-SINTEX IRON 20X120

**EMPAQUETADO**  
PACKAGING  
EMBALLAGE

Formato	pz/cj	m <sup>2</sup> /cj	m <sup>2</sup> /pl	cj/pl	kg/cj	kg/pl	Formato	pz/cj	m <sup>2</sup> /cj	m <sup>2</sup> /pl	cj/pl	kg/cj	kg/pl
60X120	2	1,44	38,88	27	38,90	1070,3	30X60	8	1,44	46,08	32	31	1012
20X120	6	1,44	43,2	30	36,40	1112	37,5X75	6	1,69	54,08	32	41,00	1332
							30X30 Malla	11	1,00	42,00	42	23,10	970,20

Piezas complementarias, ver en página 387.  
Special pieces, see page 387.  
Pièces supplémentaires, voir page 387.

## K-KONCEPT



■ K-SINTEX Cooper	60x120	M32	17.869.287.2970	●
■ K-SINTEX Cooper	60x120	<b>M40</b>	50.869.287.2970	⊗
■ K-SINTEX Cooper	20x120	M30	17.871.287.2970	●
■ K-SINTEX Cooper	20x120	<b>M34</b>	50.871.287.2970	⊗
■ K-SINTEX Cooper	37,5x75	M30	17.860.287.2970	●
■ K-SINTEX Cooper	37,5x75	<b>M38</b>	50.860.287.2970	⊗
■ K-SINTEX Cooper	30x60	M18	17.450.287.2970	●
■ K-SINTEX Cooper	30x60	<b>M28</b>	50.450.287.2970	⊗



■ K-SINTEX Iron	60x120	M32	17.869.230.2970	●
■ K-SINTEX Iron	60x120	<b>M40</b>	50.869.230.2970	⊗
■ K-SINTEX Iron	20x120	M30	17.871.230.2970	●
■ K-SINTEX Iron	20x120	<b>M34</b>	50.871.230.2970	⊗
■ K-SINTEX Iron	37,5x75	M30	17.860.230.2970	●
■ K-SINTEX Iron	37,5x75	<b>M38</b>	50.860.230.2970	⊗
■ K-SINTEX Iron	30x60	M18	17.450.230.2970	●
■ K-SINTEX Iron	30x60	<b>M28</b>	50.450.230.2970	⊗

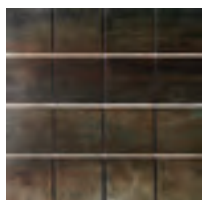


■ K-SINTEX Steel	60x120	M32	17.869.351.2970	●
■ K-SINTEX Steel	60x120	<b>M40</b>	50.869.351.2970	⊗
■ K-SINTEX Steel	20x120	M30	17.871.351.2970	●
■ K-SINTEX Steel	20x120	<b>M34</b>	50.871.351.2970	⊗
■ K-SINTEX Steel	37,5x75	M30	17.860.351.2970	●
■ K-SINTEX Steel	37,5x75	<b>M38</b>	50.860.351.2970	⊗
■ K-SINTEX Steel	30x60	M18	17.450.351.2970	●
■ K-SINTEX Steel	30x60	<b>M28</b>	50.450.351.2970	⊗



■ K-SINTEX Silver	60x120	M32	17.869.183.2970	●
■ K-SINTEX Silver	60x120	<b>M40</b>	50.869.183.2970	⊗
■ K-SINTEX Silver	20x120	M30	17.871.183.2970	●
■ K-SINTEX Silver	20x120	<b>M34</b>	50.871.183.2970	⊗
■ K-SINTEX Silver	37,5x75	M30	17.860.183.2970	●
■ K-SINTEX Silver	37,5x75	<b>M38</b>	50.860.183.2970	⊗
■ K-SINTEX Silver	30x60	M18	17.450.183.2970	●
■ K-SINTEX Silver	30x60	<b>M28</b>	50.450.183.2970	⊗

### MALLA 30x30 (7x7)



■ Malla K-SINTEX Cooper	M43	25.590.287.2970	●
■ Malla K-SINTEX Cooper	<b>M43</b>	51.590.287.2970	⊗
■ Malla K-SINTEX Iron	M43	25.590.230.2970	●
■ Malla K-SINTEX Iron	<b>M43</b>	51.590.230.2970	⊗
■ Malla K-SINTEX Steel	M43	25.590.351.2970	●
■ Malla K-SINTEX Steel	<b>M43</b>	51.590.351.2970	⊗
■ Malla K-SINTEX Silver	M43	25.590.183.2970	●
■ Malla K-SINTEX Silver	<b>M43</b>	51.590.183.2970	⊗

Disponible en todos los colores de la serie  
Available in all colors of the series  
Disponible dans toutes les couleurs de la série