



**VARMORA GRANITO PVT. LTD.**

HEAD OFFICE : 8/A National Highway, At.-Dhuva, Tal.-Wankaner, Dist. Morbi.  
Mob.: +91 98252 23068  
E-mail: marketing@varmora.com

CORPORATE OFFICE : A-54, 1st Floor, Elite Auto House, Mathuradas VasANJI Road,  
Andheri - Kurla Road, Andheri (EAST).  
Tel.: +91-22-28389790 / 91 / 92, Fax: +91-22-28389794  
Email: mumbai@varmora.com, www.varmora.com

Customer Care: 1800 212 0053



**XTRA SLIM**<sup>7mm</sup>

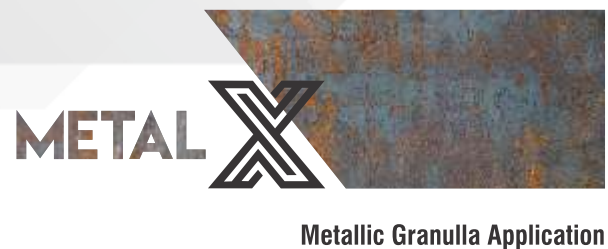


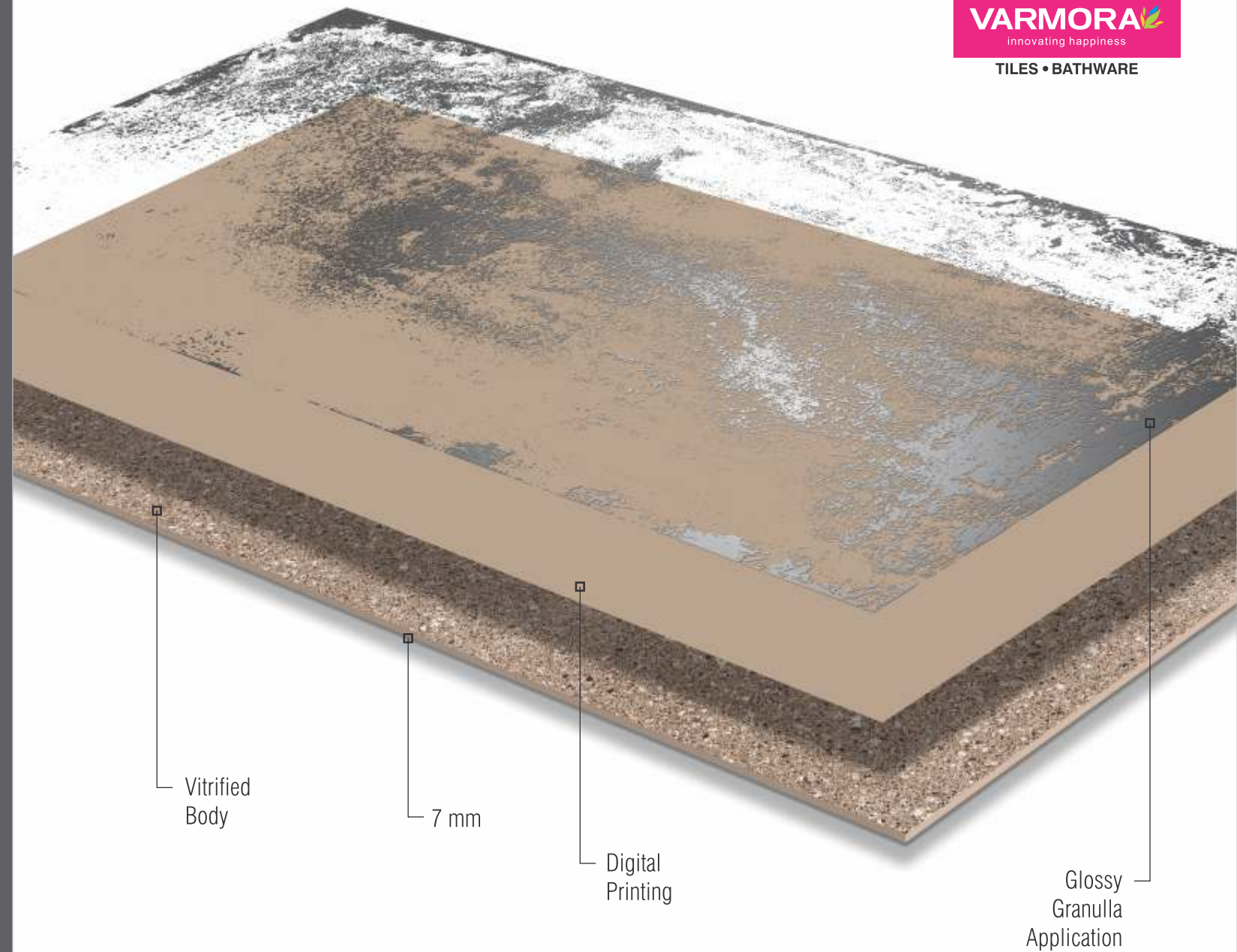
**VARMORA** 



Glorious and eye-catching finishes and designs never go out of style. And Varmora has developed a series of finishes that are the epitome of aesthetic brilliance. Varmora's X-series includes a number of exquisite finishes for designer ceramic tiles that can spread the magic of eternal panache in your spaces.

Stand  
For  
Versatility.  
Reflect  
Vivacity.





**GLOW**

Glossy  
Granulla  
Application  
600x1200MM

This finish is designed to bring the confident aesthetics at the surface

GlowX is produced with digital printing technology to give it a sheen like no other. On the surface of GlowX a layer of glossy granulla is applied to give it the necessary surface texture. These aesthetic properties complemented by the high flexibility of GlowX make it the perfect choice for creating breathtaking spaces.

- Digital Printing+
- Low Water Absorption
- Eco Friendly
- Zero Maintenance
- Random Design
- Highly Durable
- Glossy Granulla Application
- Appx. 30% Less Weight
- Better Flexibility
- High Strength
- Wall & Floor



**ARORA BEIGE**



ARORA BEIGE



**GLOW X** Glossy Granulla Application

**VARMORA**  
innovating happiness

TILES • BATHWARE



ARORA CHOCO



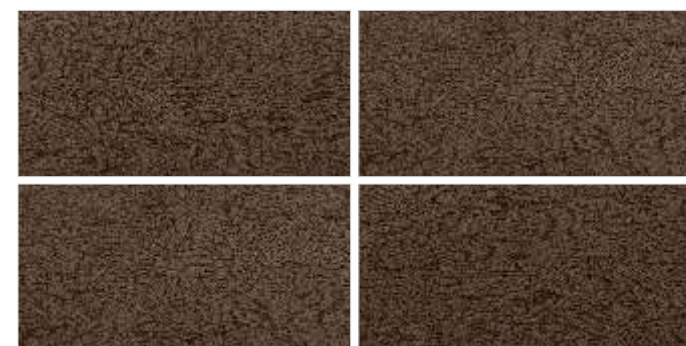
ARORA BIANCO



ARORA NERO



ARORA COPPER





MARCO NATURAL

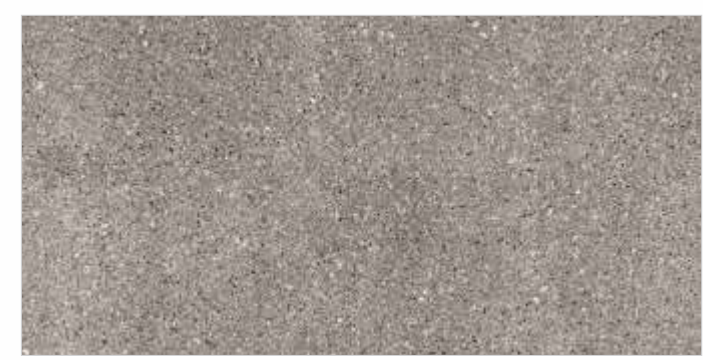


**GLOW X** Glossy Granulla Application

**VARMORA**  
innovating happiness  
TILES • BATHWARE



MARCO BIANCO



MARCO NERO



MARCO TUSK



MARCO CHOCO





STEFANO BROWN



Minimum 3mm Spacer Recommend

**GLOW X** Glossy Granulla Application

**VARMORA** innovating happiness  
TILES • BATHWARE



STEFANO CHIFFON



STEFANO CHOCO



STEFANO PEARL



STEFANO NERO







LUCA BEIGE



**GLOW X** Glossy Granulla Application

**VARMORA**  
innovating happiness  
TILES • BATHWARE



LUCA COPPER



LUCA GRAY



LUCA NERO



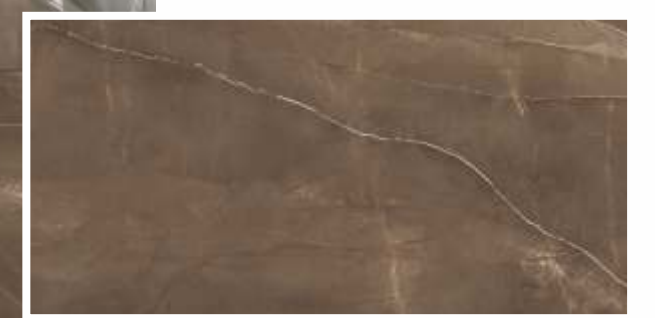
**B R I G H T** Crystal Glaze Application  
600x1200MM

Shining as bright as the diamonds; these will spread eternal glamour all around



BrightX is the shining star of the X series. BrightX is conceived with the use of liquid glaze to give it a smooth and glorious finish. On top of that, extra polishing on the surface gives it a glare-free and consistent shine. BrightX allows you to add glamour to your space without the risk of looking ostentatious.

- Better Flexibility
- HD Printing
- Low Water Absorption
- Eco Friendly
- Random Design
- Zero Maintenance
- Crystal Glaze Application
- Nano Technology
- 100% Replacement for Italian Marble
- Appx. 30% Less Weight
- High Strength
- Wall & Floor
- More Brightness
- More Glossiness
- Sharpness



**BRENZO WHISKY** 



**BRENZO GRISS**

 **XTRA SLIM** 7mm

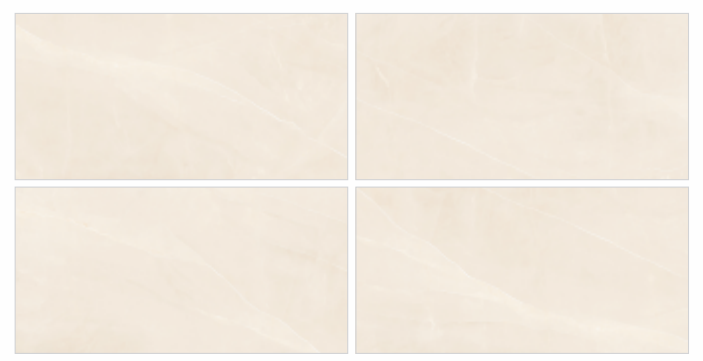
Minimum  
**3mm**  
Spacer  
Recommend 

**B R I G H T X** Crystal  
Glaze  
Application - - - - -

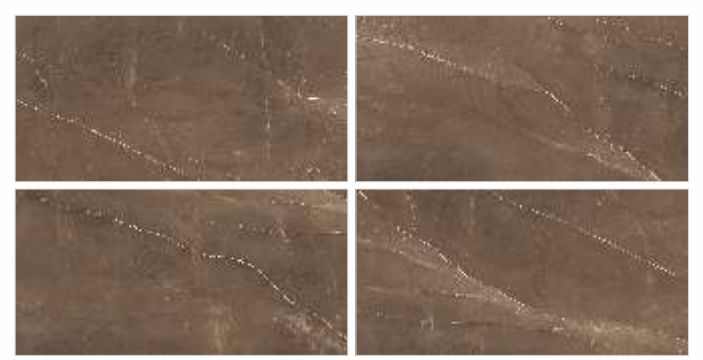
**VARMORA**  
innovating happiness  
**TILES • BATHWARE**



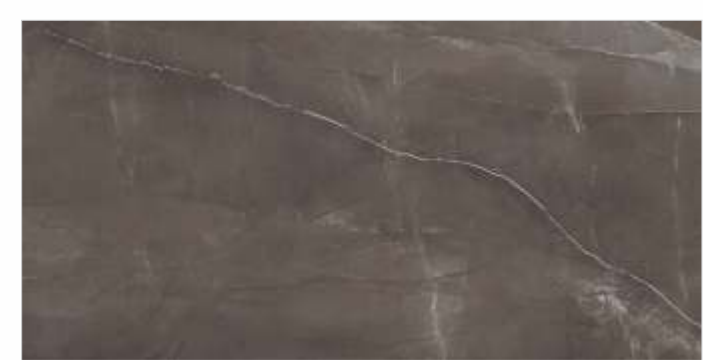
BRENZO CREMA



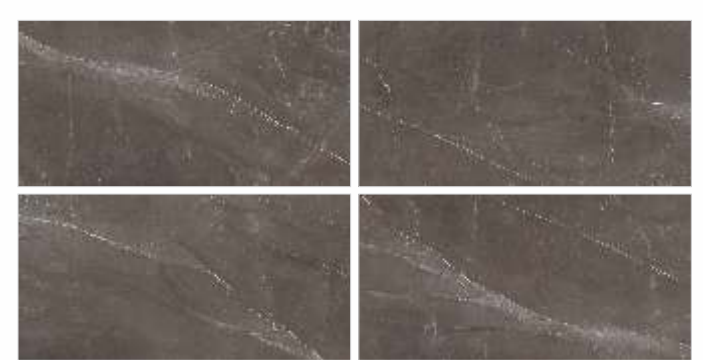
BRENZO WHISKY



BRENZO WHITE



BRENZO NERO





DECOTA BEIGE 



DECOTA DOVE



**B R I G H T X** Crystal Glaze Application

**VARMORA**  
innovating happiness

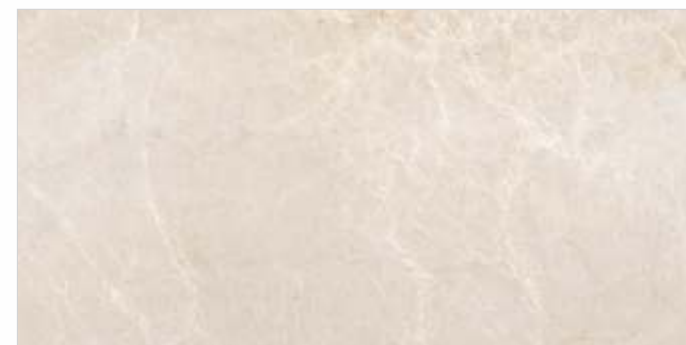
TILES • BATHWARE



DECOTA TUSK



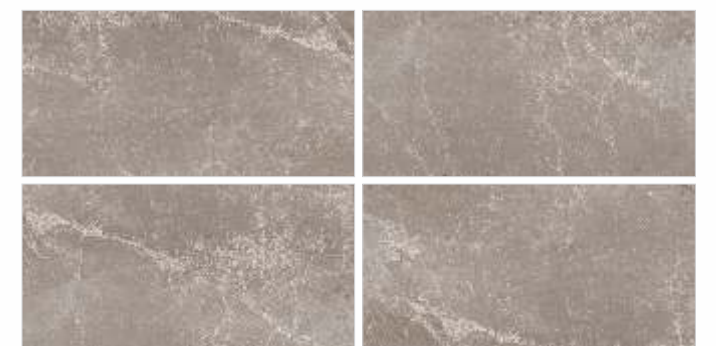
DECATO CHOCO



DECOTA WHITE



DECOTA ASH





STROMI BIANCO



Minimum 3mm Spacer Recommend

BRIGHTX Crystal Glaze Application

VARMORA innovating happiness TILES • BATHWARE



STROMI BLONDE



STROMI BROWN



STROMI DOVE



STROMI NEGRO





LINT BEIGE 



LINT BIANCO



 XTRA SLIM<sup>7mm</sup>

Minimum  
3mm  
Spacer  
Recommend 

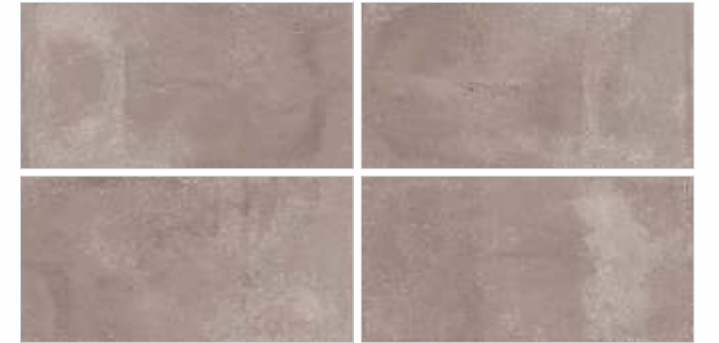
**B R I G H T X** Crystal  
Glaze  
Application - - - - -

**VARMORA**  
innovating happiness

TILES • BATHWARE



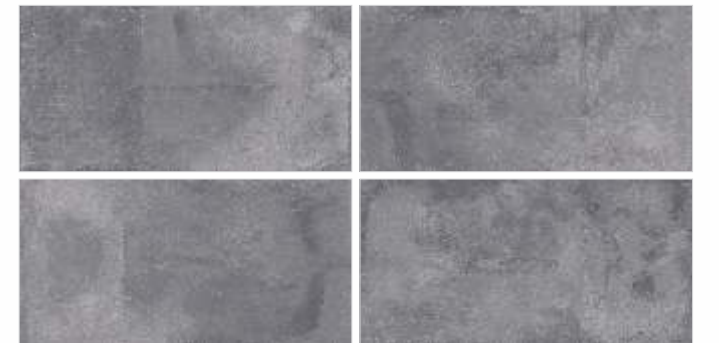
LINT BROWN



LINT GREY



LINT NERO




LINT TUSK





**DYNA DELICATO**

 **XTRA SLIM** 7mm

Minimum  
**3mm**  
Spacer  
Recommend 

**B R I G H T X** Crystal Glaze Application

**VARMORA**  
innovating happiness  
TILES • BATHWARE



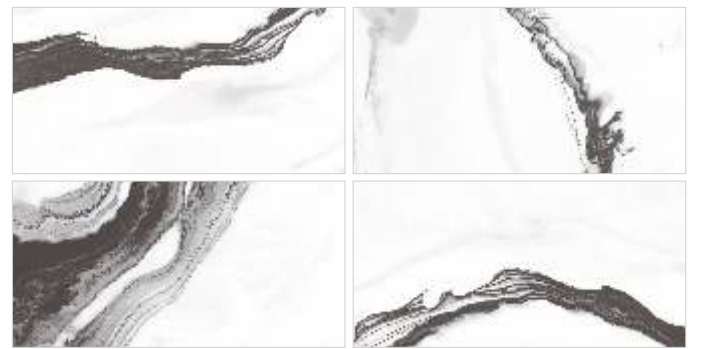
Breccian Arbascato



CURIOUS BROWN



FLORENTINA



CLOT SATUARIO







DENILO GRAY LT



DENILO GRAY DK



DENILO GRAY DECOR



DENILO ALTO LT



DENILO ALTO DK



DENILO ALTO DECOR



DENILO MARIO LT



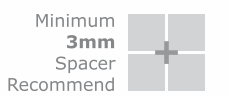
DENILO MARIO DK



DENILO MARIO DECOR



ANTIQUÉ ICE





Glare-free natural marble finish

7 mm

Suitable for both wall applications

Superlative finish with natural look and feel

**SILKX**

Silk Sattin Finish .....  
600x1200MM

Reflect your love for grace and glory by placing these sparkling gems all around you

SilkX has properties that seem like being touched by an angel. With natural marble finish and feel, SilkX is a masterpiece in all sense of the word. A super satin finish with natural looks and high flexibility, SilkX is ideal for both wall applications.

- Better Flexibility
- Digital Printing +
- Low Water Absorption
- Eco Friendly
- Random Design
- Zero Maintenance
- Imported Super Glaze
- Nano Technology
- 100% Replacement for Italian Marble
- Appx. 30% Less Weight
- High Strength
- Wall
- Smooth Surface
- Super Sattin Finish



**METAL GRAY**

**SILKX** Silk Sattin Finish



MEDRID WHITE



MEDRID STATE

**MEDRID ASH**



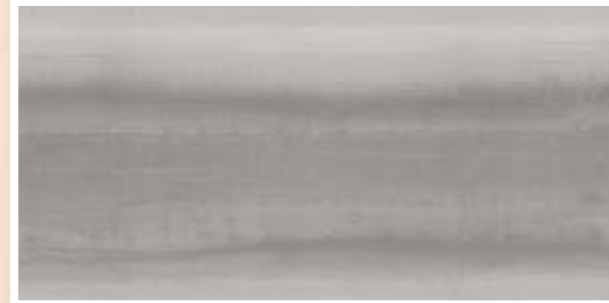
Minimum 3mm Spacer Recommend



**SILKX** Silk Sattin Finish



METAL BIANCO



METAL GRAY

**METAL BEIGE**



Minimum 3mm Spacer Recommend





**TORANO**

 **XTRA SLIM** <sup>7mm</sup>

Minimum  
**3mm**  
Spacer  
Recommend 

**SILKX** Silk  
Satin  
Finish

**VARMORA**  
innovating happiness  
TILES • BATHWARE



AUSTIN



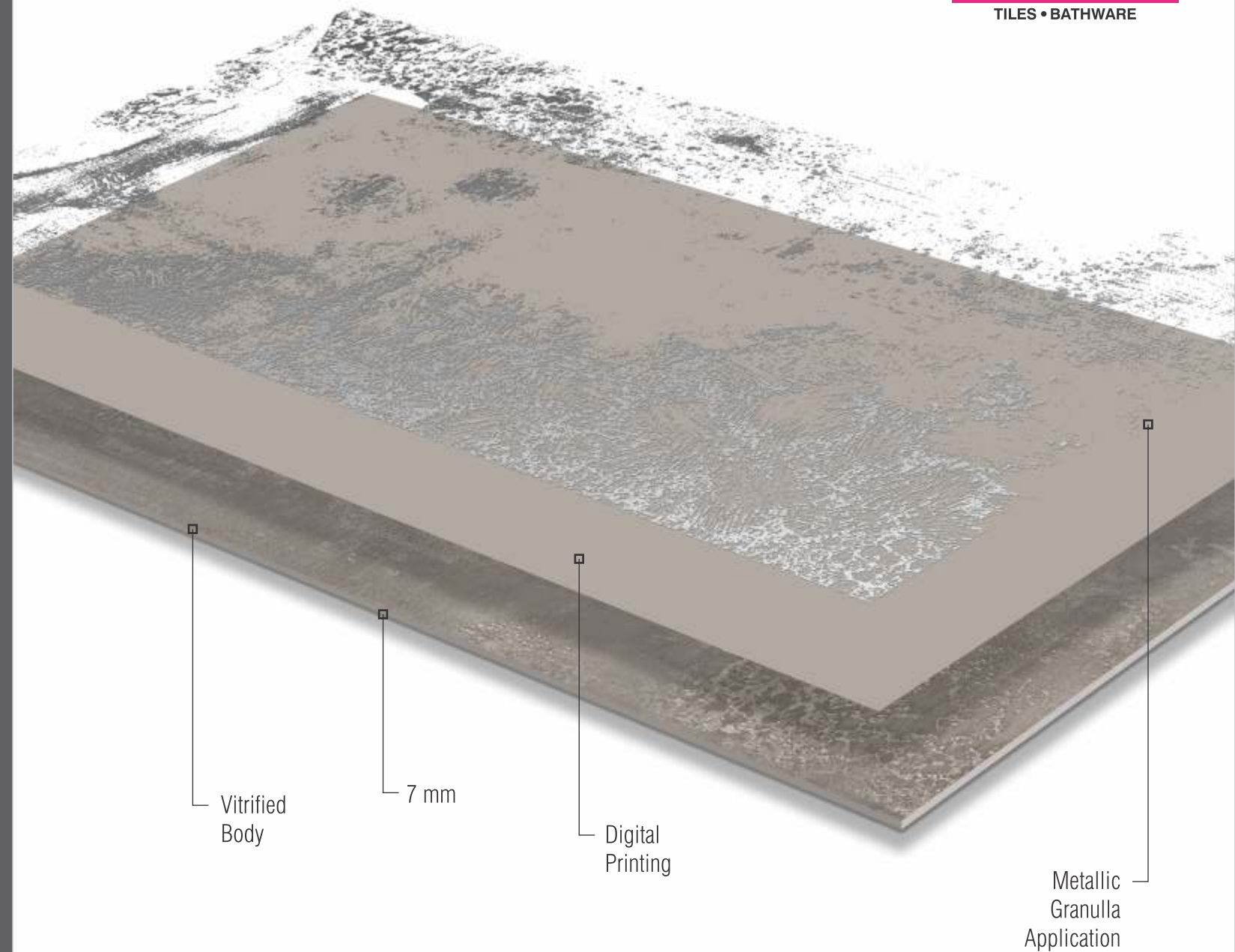
PRO SATHVARIO





**M E T A L** Metallic Granulla Application  
600x1200MM

Metal is for forever  
and its charm is here in its  
glowing avatar to woo your space



MetalX brings forth the innate appearance and rough texture of metal in this finish. To capture the natural allure of metallic texture and finish, the surface of MetalX is covered with a layer of high-quality metallic granulla. Apart from its aesthetics, MetalX has high MOR for better durability.

-  Better Flexibility
-  Digital Printing +
-  Low Water Absorption
-  Eco Friendly
-  Random Design
-  Zero Maintenance
-  Highly Durable
-  Metallic Granulla Application
-  Matt Setting Effect
-  Appx. 30% Less Weight
-  High Strength
-  Wall & Floor



CAMPUS BROWN 



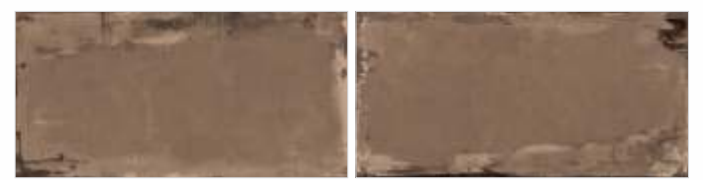
CAMPUS BROWN



METALX Metallic Granulla Application



CAMPUS CHOCO



CAMPUS IVORY



CAMPUS PISTA







DECAY BROWN

METALX Metallic Granulla Application



Minimum 3mm Spacer Recommend



DECAY MULTI

VARMORA innovating happiness  
TILES • BATHWARE



Minimum 3mm Spacer Recommend



WINTER SWISS



Minimum 3mm Spacer Recommend

METALX Metallic Granulla Application



WINTER CREMA



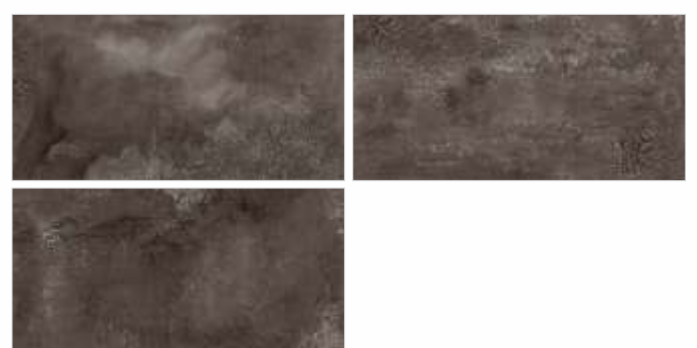
WINTER COPPER



WINTER GRAY



WINTER NERO

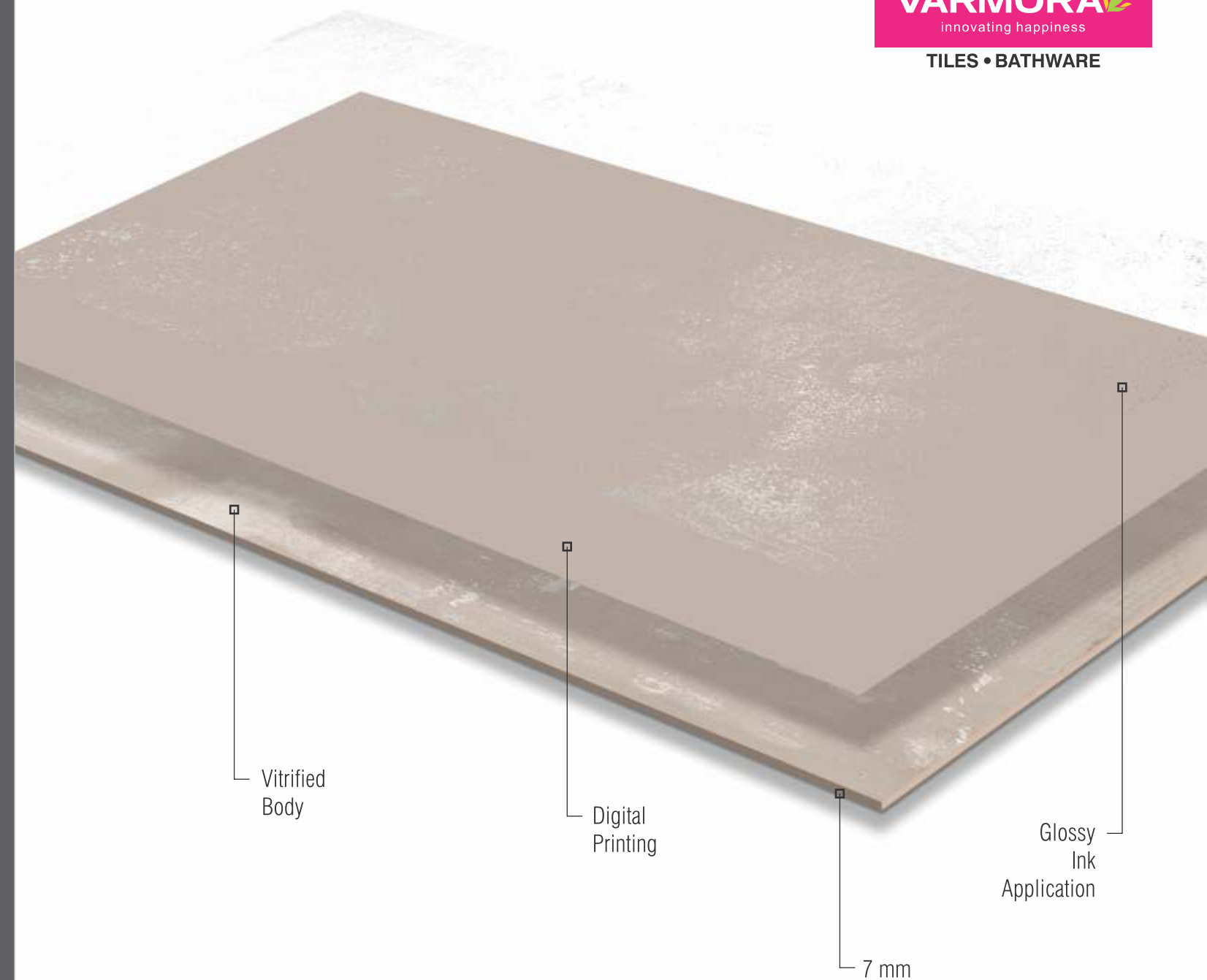




**S H I N E**

Glossy Ink Application  
600x1200MM

Reveling in all its glory, this gleaming beauty is the epitome of exquisite craftsmanship



ShineX easily stands out from the crowd. A vitrified body with an application glossy ink, ShineX showcases a gleam for all to see. The lightweight body of ShineX makes it suitable for wall and floor applications, while also making it easier to transport it.

- Better Flexibility
- Digital Printing +
- Low Water Absorption
- Eco Friendly
- Random Design
- Zero Maintenance
- Highly Durable
- Glossy Ink Application
- Matt
- Appx. 30% Less Weight
- High Strength
- Wall & Floor



ALVISE VERDE 



ALVISE CREMA



Minimum 3mm Spacer Recommend

SHINEX Glossy Ink Application

VARMORA innovating happiness TILES • BATHWARE



ALVISE PEARL



ALVISE GRAY



ALVISE VERDE

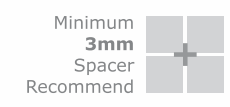


ALVISE GRISS





**COSMA ASH**



COSMA IVORY



COSMA CHOCO



COSMA PEARL



COSMA NERO



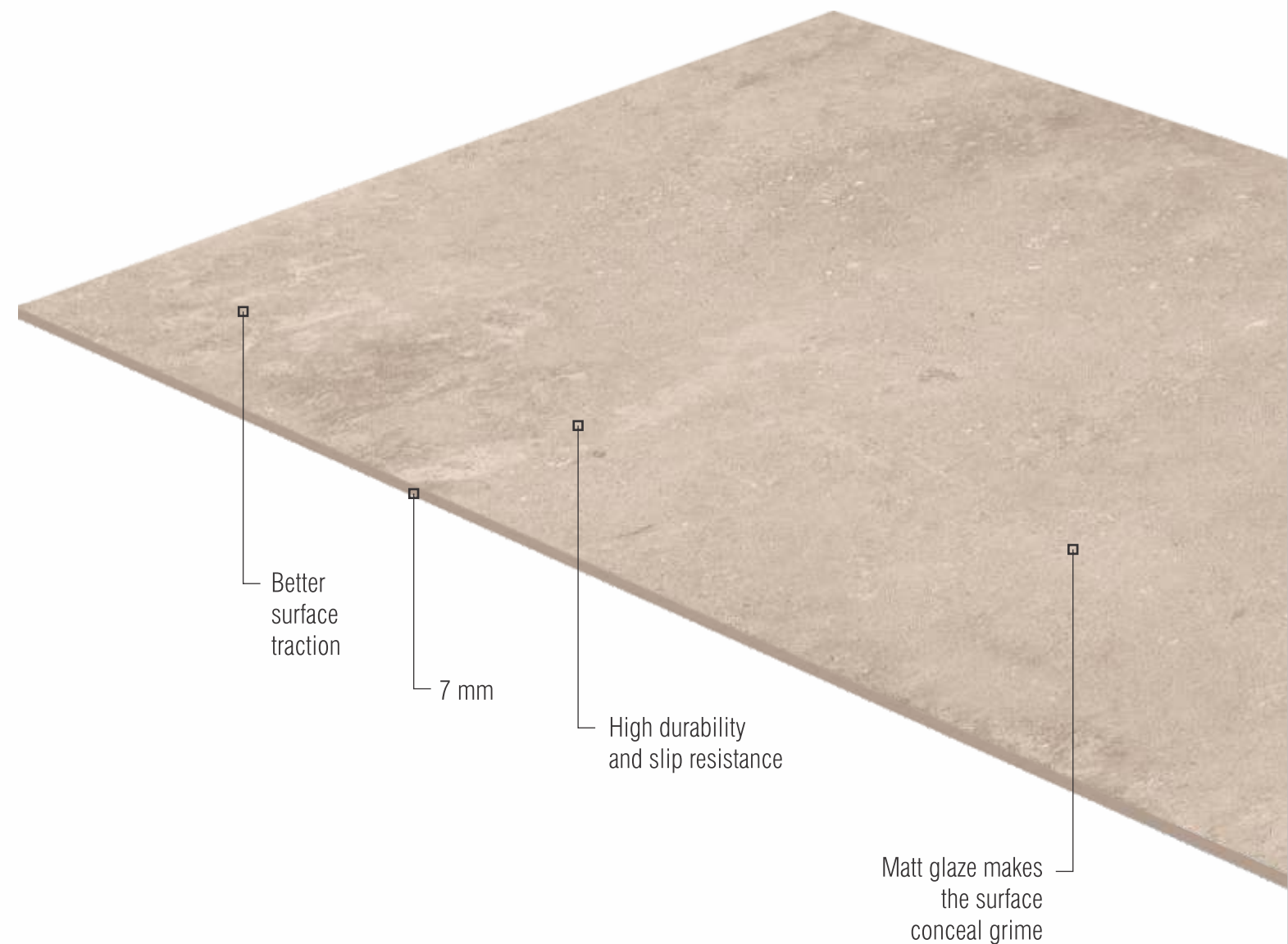
COSMA PEACH



**M A T T**

Matt  
Finish  
600x1200MM

Sense the presence of supreme  
finesse and earthen glory



MattX is a new rendition an old classic. The modern techniques used in manufacturing make MattX highly durable and the matt glaze give the surface more traction to make it slip resistant. MattX can be your go-to choice for creating modern, sophisticated and practical décors.

-  Better Flexibility
-  Digital Printing +
-  Low Water Absorption
-  Eco Friendly
-  Random Design
-  Zero Maintenance
-  Highly Durable
-  Matt
-  Appx. 30% Less Weight
-  High Strength
-  Wall & Floor



STELLA CHOCO 





STELLA DOVE

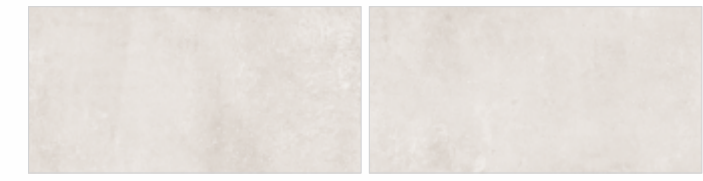


M A T T X Matt Finish

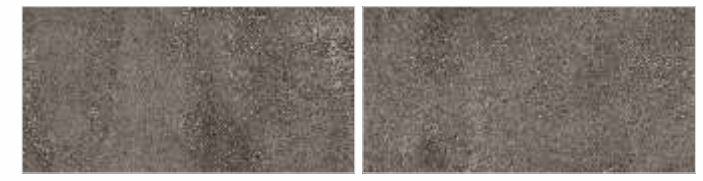
VARMORA innovating happiness  
TILES • BATHWARE



STELLA PEARL



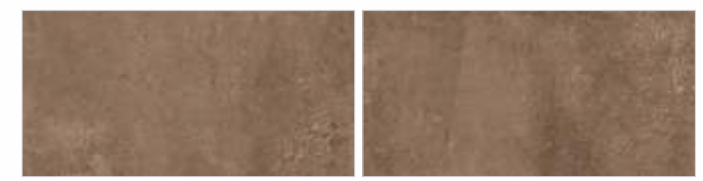
STELLA NERO



STELLA CREMA

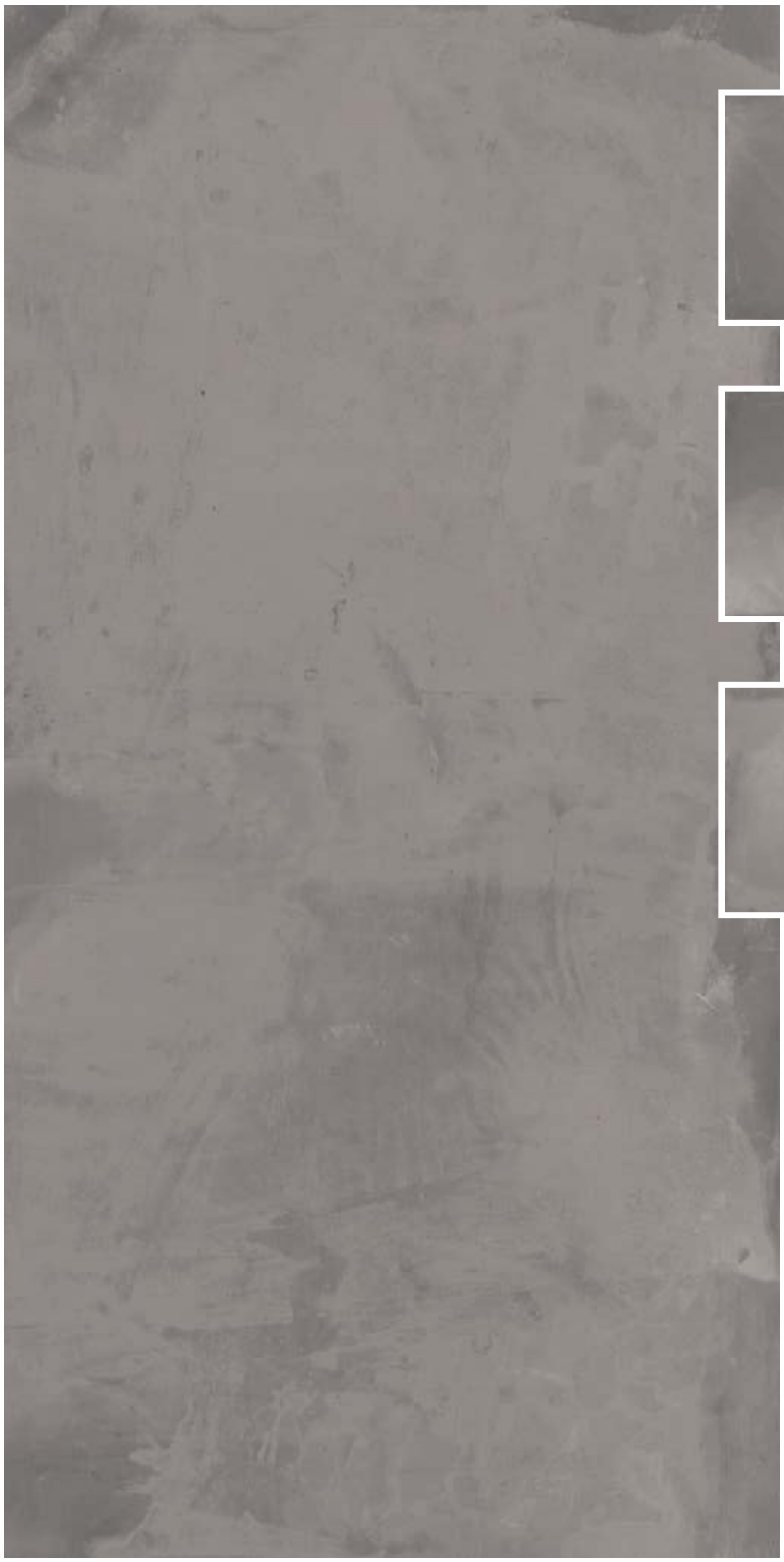


STELLA CHOCO



STELLA SRUCE





**BOND NERO**



# MATTX Matt Finish



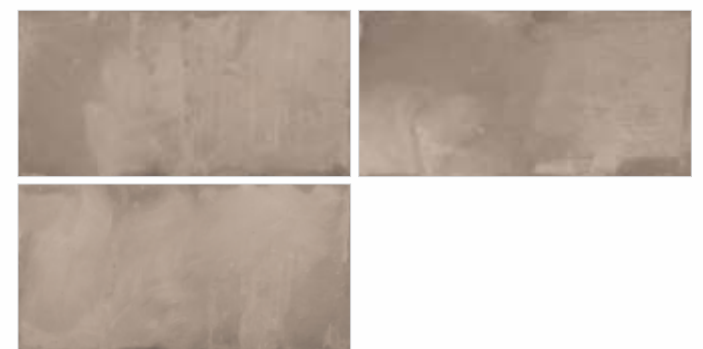
BOND CHIFON



BOND CREMA



BOND BUFF





**GROUT MERINO**



Minimum  
**3mm**  
Spacer  
Recommend

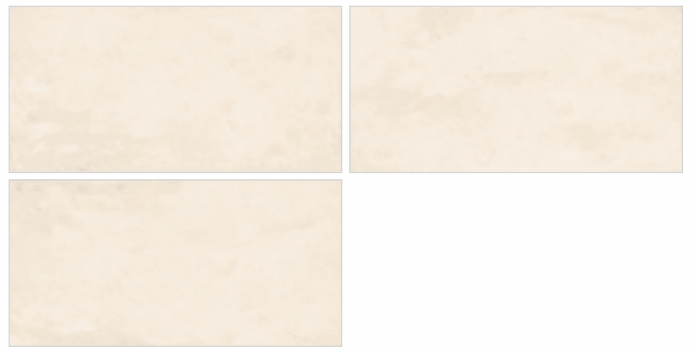


**M A T T X** Matt  
Finish

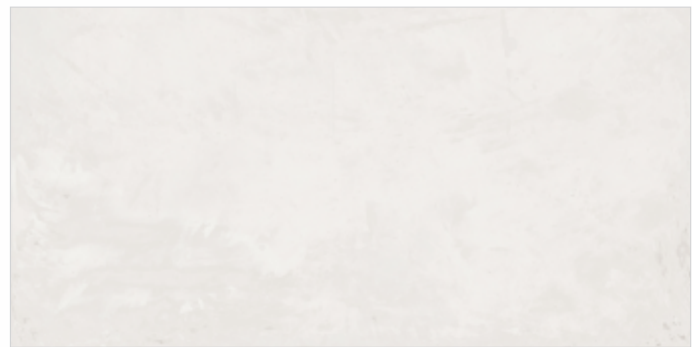
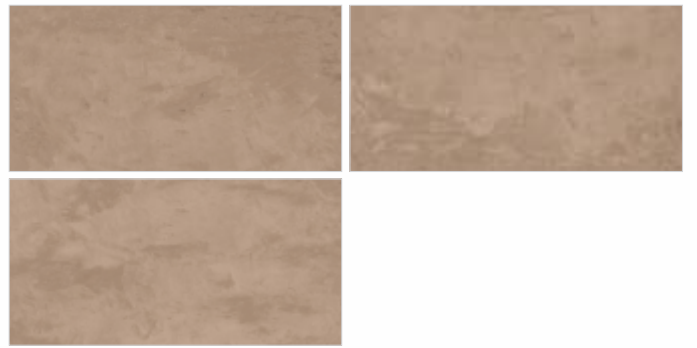
**VARMORA**  
innovating happiness  
TILES • BATHWARE



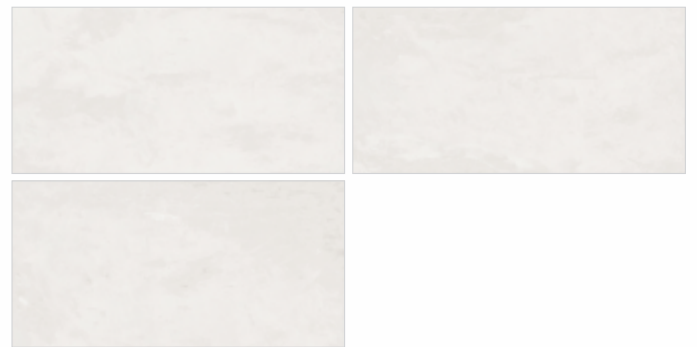
GROUT IVORY



GROUT DUST STROM



GROUT BIANCO



GROUT GRAY



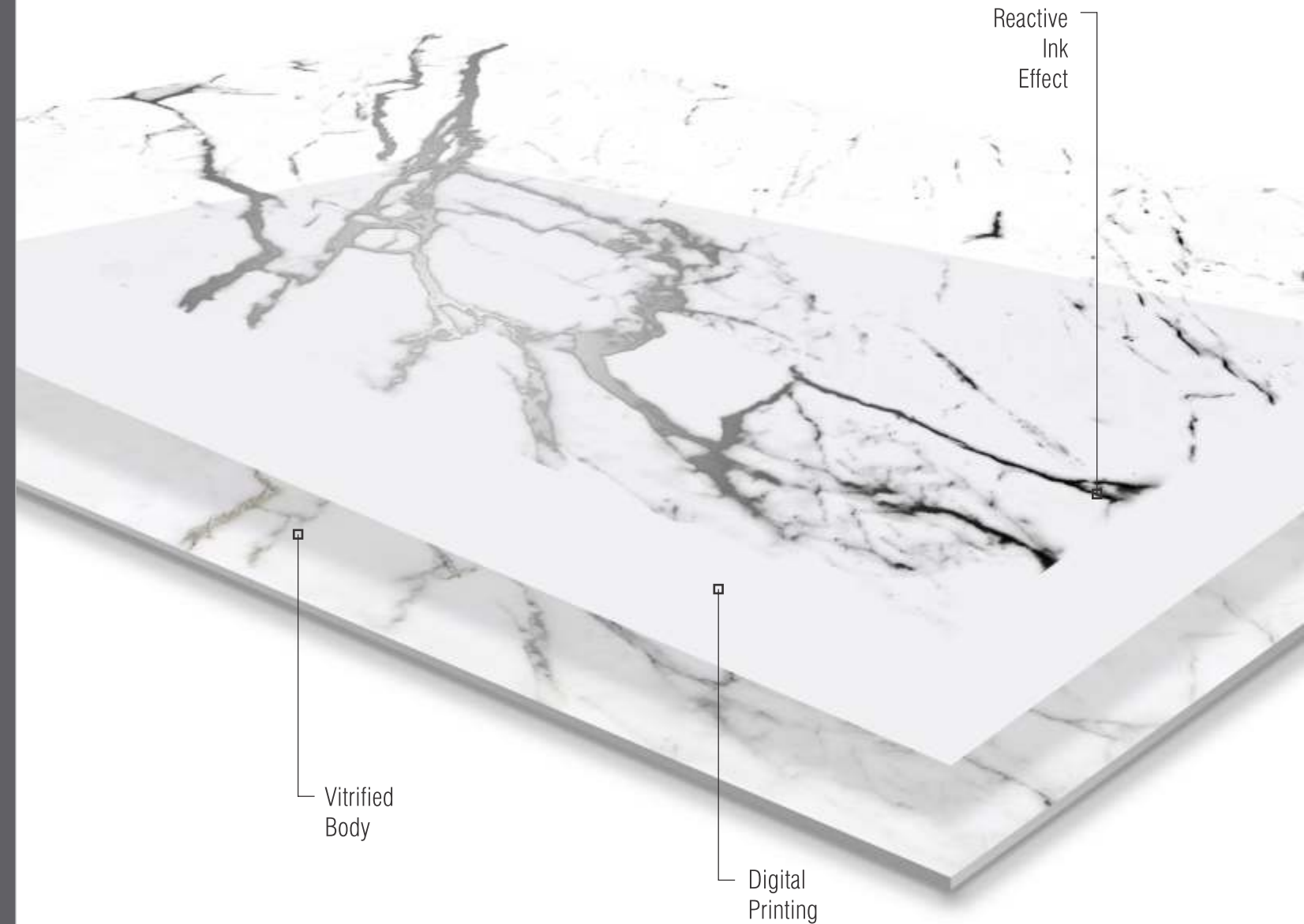
25+  
NEW DESIGNS

VARMORA  
innovating happiness

TILES • BATHWARE

ROCKER Reactive Ink Effect  
600x1200MM

Explore the essence of aesthetics,  
ingrained deeply into this  
masterpiece

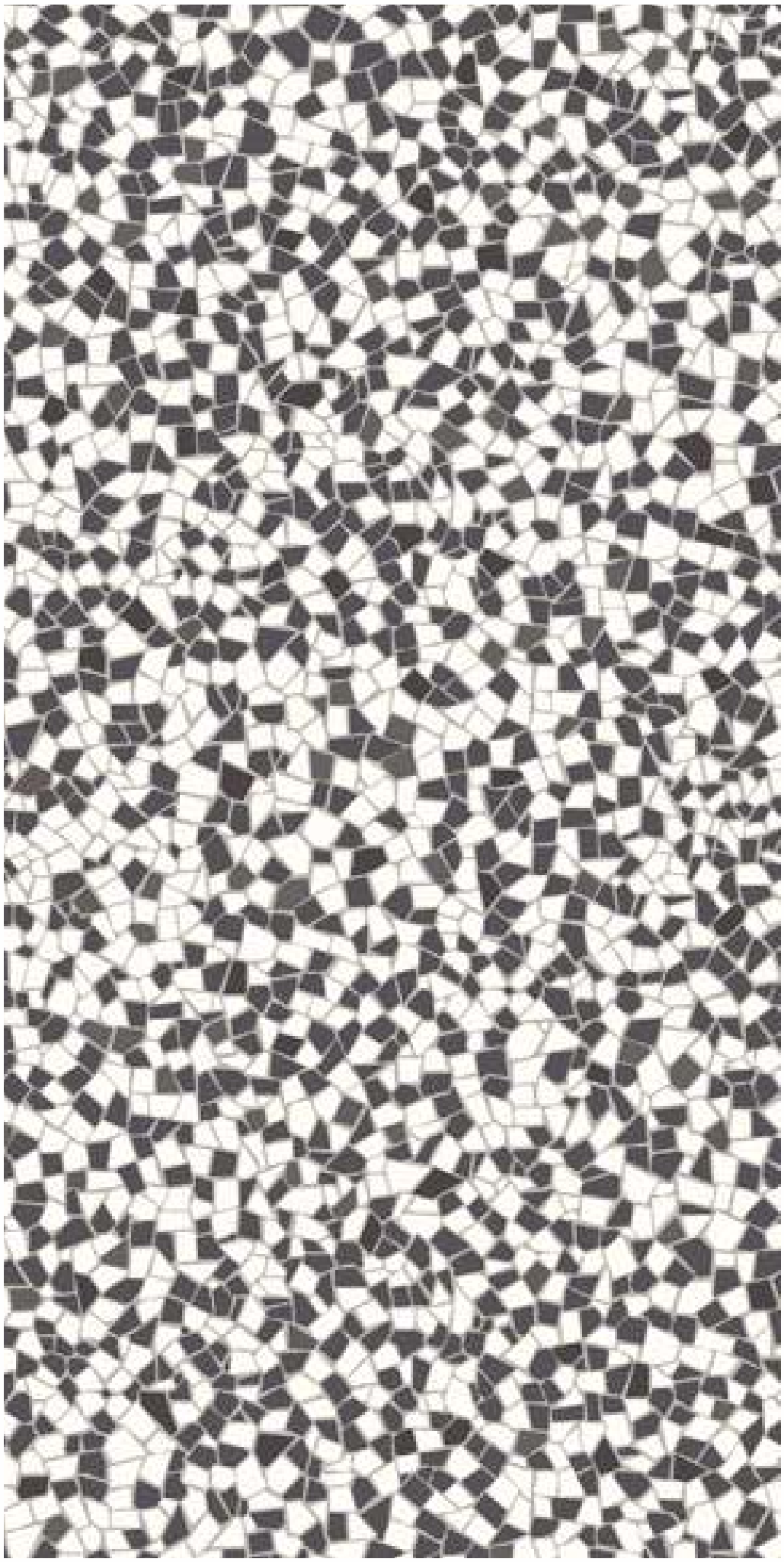


Rocker finish works as the perfect glory enhancer for a variety of abodes. It gives a unique appeal to the overall aura of the room. Non-slippery, abrasion resistant and easy to maintain reactive finish tiles come with a promise of durability and reliability. The pigments used for making reactive ink finish surfaces are non-combustible when exposed to extreme heat and do not allow seepage of water which in turn adds life into the tile. Also, as solid color composition is its biggest forte; pleasing surface beauty is guaranteed.

- Rectified
- Reactive Effect
- Digital Printing +
- Low Water Absorption
- Eco Friendly
- Random Design
- Zero Maintenance
- Highly Durable
- Special Glaze
- 100% Replacement for Natural Marble
- Wall & Floor
- Embossed Effect Digital Tech
- High Strength



**BRICK STONE BIANCO**



BRICK STONE HL

Rocker finish works as the perfect glory enhancer for a variety of abodes. It gives a unique appeal to the overall aura of the room. Non-slippery, abrasion resistant and easy to maintain reactive finish tiles come with a promise of durability and reliability. The pigments used for making reactive ink finish surfaces are non-combustible when exposed to extreme heat and do not allow seepage of water which in turn adds life into the tile. Also, as solid color composition is its biggest forte; pleasing surface beauty is guaranteed.

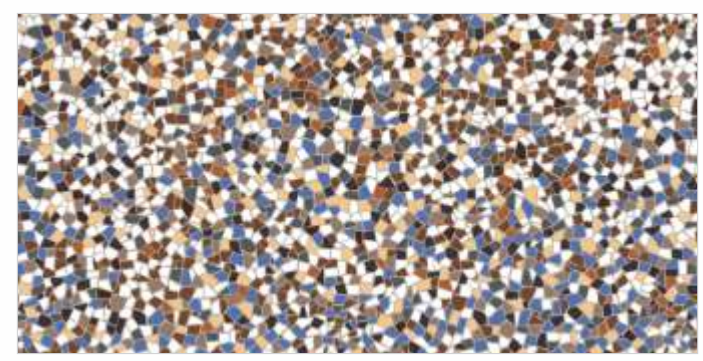
Minimum  
3mm  
Spacer  
Recommend



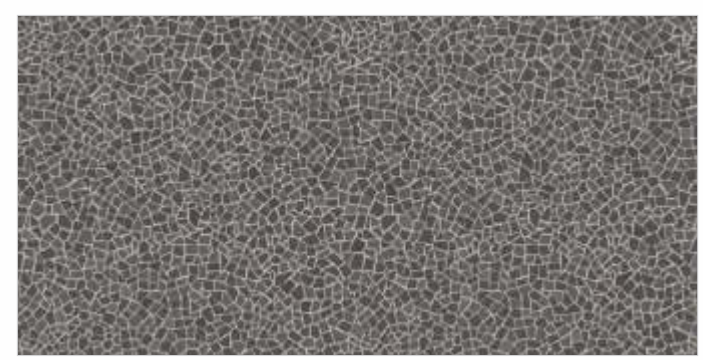
# R O C K E R Reactive Effect



BRICK STONE BIANCO



BRICK STONE MULTI

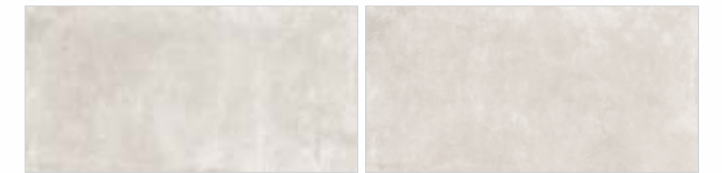


BRICK STONE BLACK

**R O C K E R** Reactive  
Effect



CREA BIANCO



CREA TUSK



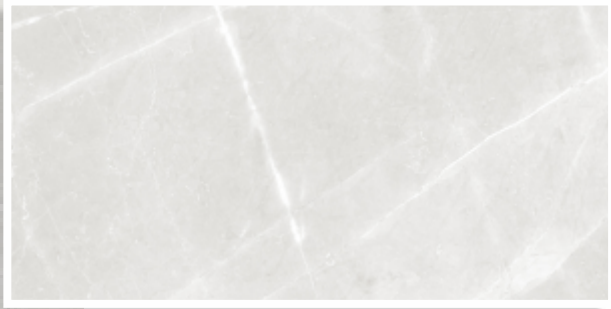
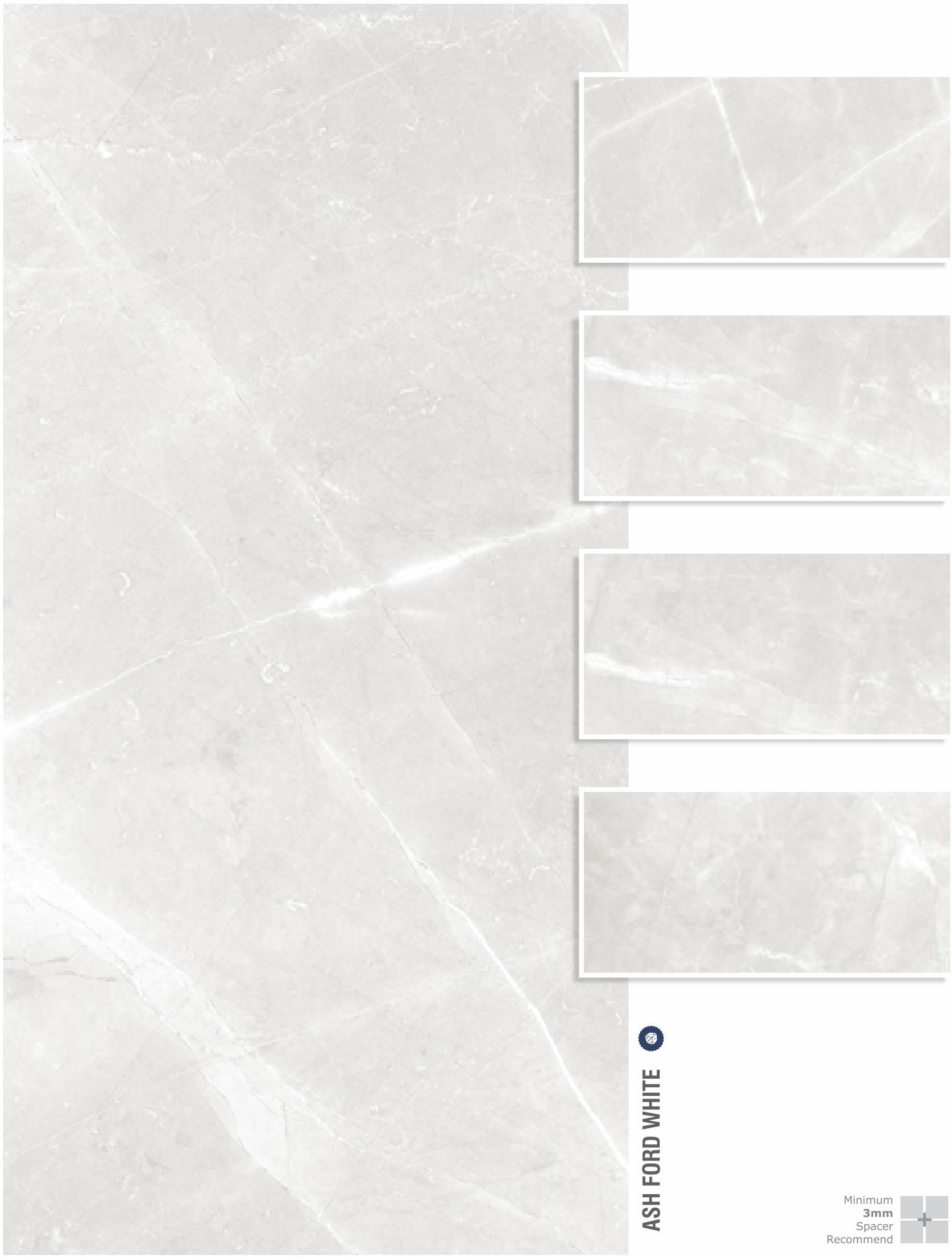
CREA COPPER



CREA NERO

Minimum  
3mm  
Spacer  
Recommend





ASH FORD WHITE

Minimum  
3mm  
Spacer  
Recommend



# ROCKER

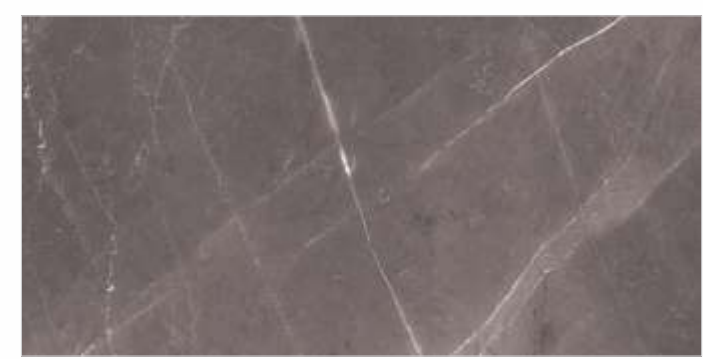
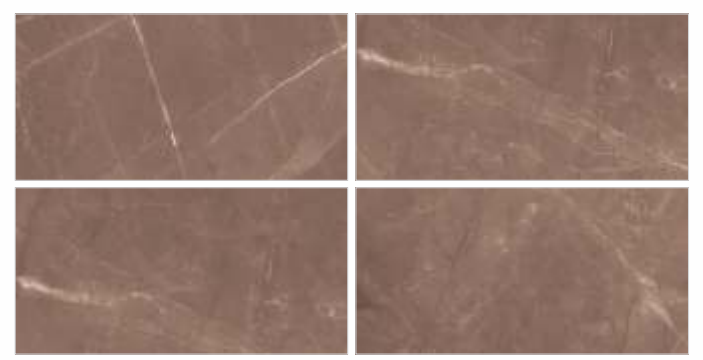
Reactive  
Effect



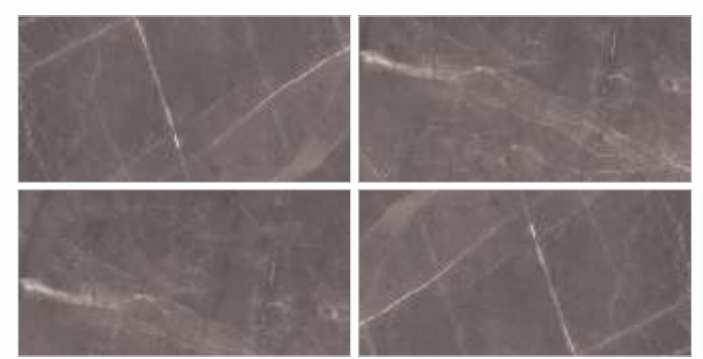
ASH FORD CREMA



ASH FORD WHISKY



ASH FORD NERO







**SPIRO ALBASTER**

Minimum  
**3mm**  
Spacer  
Recommend



# ROCKER

Reactive  
Effect



SPIRO CREMA



SPIRO BROWN



SPIRO WHITE



SPIRO DOVE





**PARKER BIANCO**

Minimum  
**3mm**  
Spacer  
Recommend



# ROCKER

Reactive  
Effect



PARKAR NERO



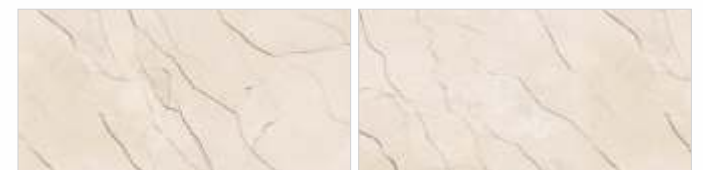
PARKAR IVORY



PARKAR COFFE



TORANTO TUSK





**INOX BIANCO**

Minimum  
**3mm**  
Spacer  
Recommend

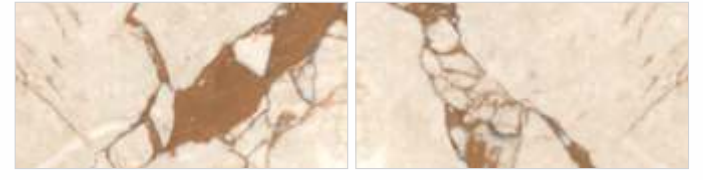


# ROCKER

Reactive  
Effect



ANTALYA



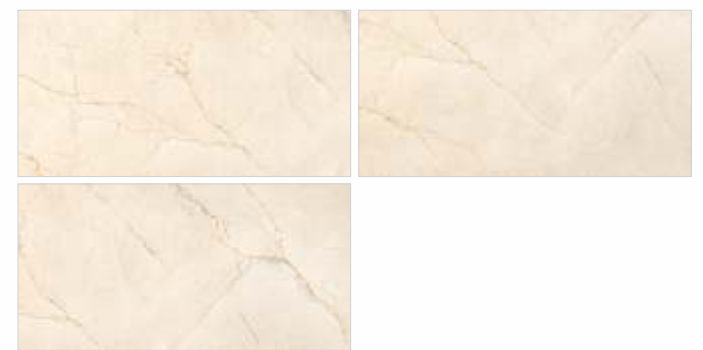
ELSON



MISTY FORD



AFYON CREMA



# ROCKER

Reactive  
Effect



BROMIN WOOD BIANCO



BROMIN WOOD COFFE



BROMIN WOOD DAWN



BROMIN WOOD NATURAL



**BROMIN WOOD COPPER**

Minimum  
**3mm**  
Spacer  
Recommend





TAVETTI BEIGE

Minimum  
3mm  
Spacer  
Recommend



# ROCKER

Reactive  
Effect



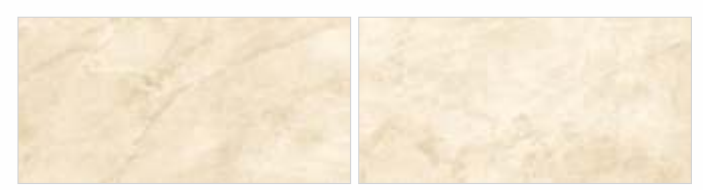
TAVETTI BIANCO



TAVETTI NERO



TENUIZ IVORY



TEUNIZ CHOCO





**MECABE**

Minimum  
**3mm**  
Spacer  
Recommend



# ROCKER

Reactive  
Effect

**VARMORA**  
innovating happiness  
TILES • BATHWARE



BIXBITE SAND



BIXBITE CARBON



OCEAN BIANCO



OCEAN NERO





**ALKARZ**

Minimum  
**3mm**  
Spacer  
Recommend



# ROCKER

Reactive  
Effect

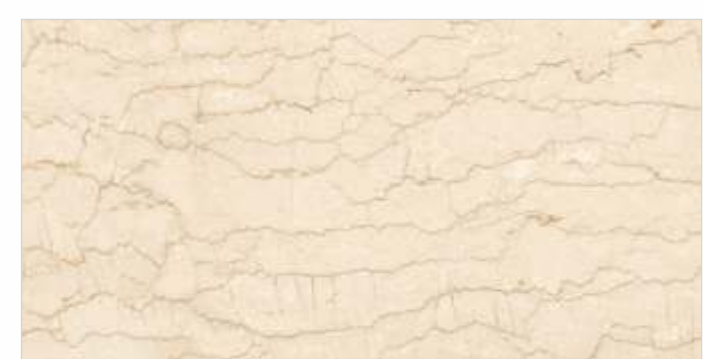
**VARMORA**  
innovating happiness  
TILES • BATHWARE



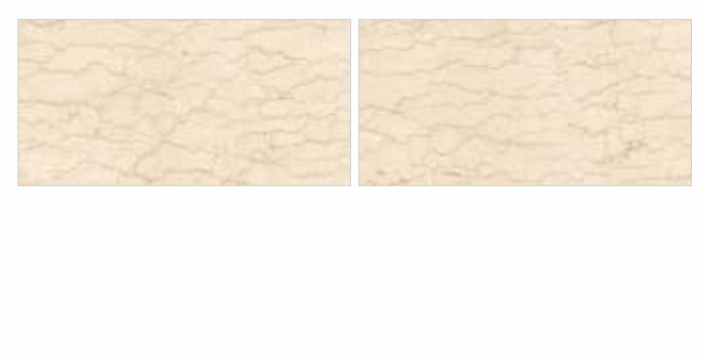
SATHVARIYO CLASSIC



HERICAN TUSK



DELLSUN



## Slimtile

## TECHNICAL SPECIFICATION

Sr. No.	Characteristic	ISO Test Method	IS 15622 :2017 (GROUP B I a)	Varmora Value
<b>A</b>	<b>Dimension &amp; Surface Quality</b>			
1	Deviation in Length & Width	IS - 13630 - 1	± 0.10%	± 0.10%
2	Deviation in Thickness	IS - 13630 - 1	± 5.00%	± 3.50%
3	Straightness of sides	IS - 13630 - 1	± 0.10%	± 0.10%
4	Rectangularity	IS - 13630 - 1	± 0.10%	± 0.10%
5	Surface Flatness	IS - 13630 - 1	± 0.50%	± 0.20%
6	Surface Quality	IS - 13630 - 1	Minimum 95 % Of Tile shall be free from visible defects	95%
<b>B</b>	<b>Physical Properties</b>			
1	Water Absorption	IS - 13630 - 2	≤ 0.08%, Avg.	0.06%, Avg.
2	Modulus of Rapture(N/mm <sup>2</sup> )	IS - 13630 - 6	Avg. 35 N/mm <sup>2</sup>	Avg. 40 N/mm <sup>2</sup>
3	Breaking Strength (N)	IS - 13630 - 6	700 N	1500 N
4	Moisture Expansion (mm/m)	IS - 13630 - 3	0.02 Max.	0.01 Max.
5	Scratch Hardness of Surface (Mohs' Scale)	IS - 13630 - 13	5, Min	5*
6	Resistance of Surface Abrasion(Glazed Tiles)	IS - 13630 - 11	Class II, Min.	Class II
7	Co-efficient of linear thermal expansion	IS - 13630 - 4	6x10 <sup>-6</sup> Max	6x10 <sup>-6</sup> Max
8	Thermal Shock Resistance	IS - 13630 - 5	10 Cycles, Min	10 Cycles, Pass
9	Crazing Resistance	IS - 13630 - 9	4 Cycles at 7.5 Bar ,Min	4 Cycles, Pass
10	Impact Resistance-Co-efficient of Restitution	IS - 13630 - 14	0.55 ,Min	0.55 ,Min
11	Co-efficient of Friction	-	Manufacturer Norms	Manufacturer Norms
12	Frost Resistance	IS - 13630 - 10	Manufacturer Norms	No Damage
14	Bulk Density (g/cc)	IS - 13630 - 2	2.2 gm/cc, Min	2.3 gm/cc, Min
<b>C</b>	<b>Chemical Properties</b>			
1	Resistance of Staining	IS - 13630 - 8	Class 1, Min	Class 2, Min
2	Resistance of Household Chemicals	IS - 13630 - 8	Class AA, Min	Class AA
3	Resistance to Acids & Alkalis	IS - 13630 - 8	Required If agreed according to chemical resistance class indicated by manufacturer	Resistance

\* Minimum 5 on unpolished tiles.

\*VARMORA Values given above are our values, Which we tries to maintain, how ever test results may differ up to the limit prescribed under ISO 13006/EN 176 Group Bla

## PACKING DETAILS

SERIES	TILE SIZE	THICKNESS (approx in mm)	NO. OF TILES / BOX	WEIGHT / BOX (approx in Kg)	COVERAGE AREA / BOX (approx in sq. mtr.)	COVERAGE AREA / BOX (approx in sq. ft.)
GLOW X, SHINE X, BRIGHT X, SILK X, MATT X, METAL X, BRIGHT X	600x1200mm	7.2 to 7.60	3	35	2.16	23.24
ROCKER	600x1200mm	10.20 to 10.60	2	34	1.44	15.49

## GVT

## TECHNICAL SPECIFICATION

Sr. No.	Characteristic	ISO Test Method	IS 15622 :2017 (GROUP B I a)	Varmora Value
<b>A</b>	<b>Dimension &amp; Surface Quality</b>			
1	Deviation in Length & Width	IS - 13630 - 1	± 0.10%	± 0.10%
2	Deviation in Thickness	IS - 13630 - 1	± 5.00%	± 3.50%
3	Straightness of sides	IS - 13630 - 1	± 0.10%	± 0.10%
4	Rectangularity	IS - 13630 - 1	± 0.10%	± 0.10%
5	Surface Flatness	IS - 13630 - 1	± 0.50%	± 0.20%
6	Surface Quality	IS - 13630 - 1	Minimum 95 % of Tile shall be free from visible defects	95%
<b>B</b>	<b>Physical Properties</b>			
1	Water Absorption	IS - 13630 - 2	≤ 0.08%, Avg.	0.06%, Avg.
2	Modulus of Rapture(N/mm <sup>2</sup> )	IS - 13630 - 6	Avg. 35 N/mm <sup>2</sup>	Avg. 40 N/mm <sup>2</sup>
3	Breaking Strength (N)	IS - 13630 - 6	Thickness < 7.5 = 700 N Thickness ≥ 7.5 = 1300 N	Thickness ≥ 7.5 = 1700 N
4	Moisture Expansion (mm/m)	IS - 13630 - 3	0.02 Max.	0.01 Max.
5	Scratch Hardness of Surface (Mohs' Scale)	IS - 13630 - 13	5, Min	5*
6	Resistance of Surface Abrasion(Glazed Tiles)	IS - 13630 - 11	Class II, Min.	Class II
7	Co-efficient of linear thermal expansion	IS - 13630 - 4	6x10 <sup>-6</sup> Max	6x10 <sup>-6</sup> Max
8	Thermal Shock Resistance	IS - 13630 - 5	10 Cycles, Min	10 Cycles, Pass
9	Crazing Resistance	IS - 13630 - 9	4 Cycles at 7.5 Bar ,Min	4 Cycles, Pass
10	Impact Resistance-Co-efficient of Restitution	IS - 13630 - 14	0.55 ,Min	0.55 ,Min
11	Co-efficient of Friction	-	Manufacturer Norms	Manufacturer Norms
12	Frost Resistance	IS - 13630 - 10	Manufacturer Norms	No Damage
13	Bulk Density (g/cc)	IS - 13630 - 2	2.2 gm/cc, Min	2.3 gm/cc, Min
<b>C</b>	<b>Chemical Properties</b>			
1	Resistance of Staining	IS - 13630 - 8	Class 1, Min	Class 2, Min
2	Resistance of Household Chemicals	IS - 13630 - 8	Class AA, Min	Class AA
3	Resistance to Acids & Alkalis	IS - 13630 - 8	Required If agreed according to chemical resistance class indicated by manufacturer	Resistance

\* Minimum 5 on unpolished tiles.

\*VARMORA Values given above are our values, Which we tries to maintain, how ever test results may differ up to the limit prescribed under ISO 13006/EN 176 Group Bla



