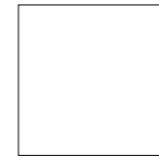
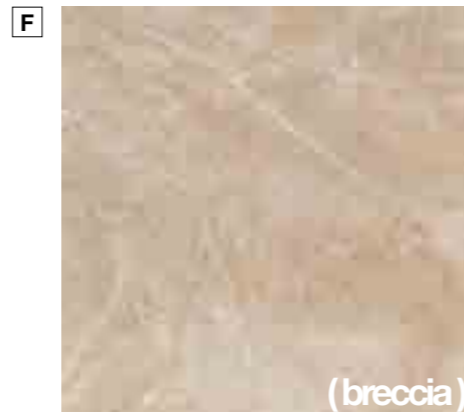
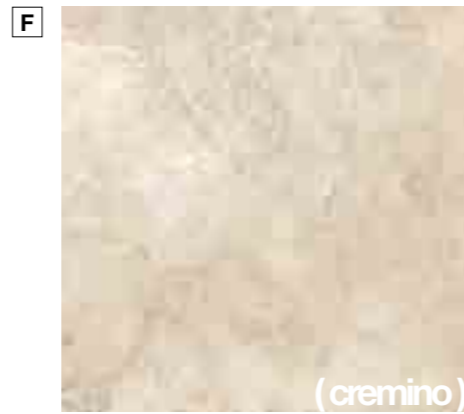


LUX 60X60

RETTIFICATO MONOCALIBRO
RECTIFIED MONOCALIBER
RECTIFIÉ MONOCALIBRE
REKTIFIZIERT, IN EINEM WERKMASSE
RECTIFICADO MONOCALIBRE
РЕКТИФИЦИРОВАННЫЙ МОНОКАЛИБЕРНЫЙ



Conforme/According to/Conforme
Gemäß/Conforme/Соответствует
UNI EN 14411 - G Bla



60X60 RETT. LAPPATO

- D821 RT-LITHOS MARFIL LAP 60X60
- D819 RT-LITHOS CREMINO LAP 60X60
- D817 RT-LITHOS BRECCIA LAP 60X60
- D822 RT-LITHOS VENATTO LAP 60X60
- D818 RT-LITHOS CARRARA LAP 60X60
- D816 RT-LITHOS ALABASTRO LAP 60X60
- D820 RT-LITHOS GRIGIO LAP 60X60
- D823 RT-LITHOS ZIMBAWE LAP 60X60



DAJQ RT-D-ROSETÓN LITHOS BEIGE-60 LAP 60X60



DAJT RT-D-ROSETÓN LITHOS GRIS-60 LAP 60X60



DAJR RT-CE-LITHOS BEIGE LAP 20X60



DAJU RT-CE-LITHOS GRIS LAP 20X60



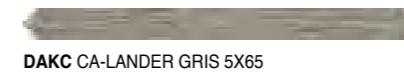
DAJS RT-T-LITHOS BEIGE LAP 20X20



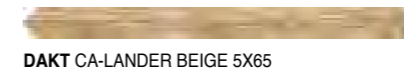
DAJI RT-T-LITHOS GRIS LAP 20X20



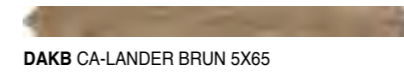
DAGS CA-LANDER BLANC 5X65



DAKC CA-LANDER GRIS 5X65



DAKT CA-LANDER BEIGE 5X65



DAKB CA-LANDER BRUN 5X65



Composizione 4 pezzi Rt-D-Rosetón 60x60
Composition 4 tiles Rt-D-Rosetón 60x60
Composition 4 pièces Rt-D-Rosetón 60x60
Vierteilige Komposition Rt-D-Rosetón 60x60
Composición 4 piezas Rt-D-Rosetón 60x60
Композиция из 4 штук Rt-D-Rosetón 60x60

PEZZI SPECIALI SPECIAL TRIMS PIECES SPECIALES SONDERSTÜCKE PIEZAS ESPECIALES СПЕЦИАЛЬНЫЕ ИЗДЕЛИЯ	GRADONE 30x60	BATTISCOPA 8,4x60	IMBALLI PACKING EMBALLAGES VERPACKUNGEN EMBALAJES УПАКОВКИ	Pezzi Pieces Stk Pièces Piezas Штуки		Mq Sq. Mt Om Mq Mq Кв. м		Kg Kr Kg		Spessore Thickness Dicke Épaisseur Толщина
				Scatole Box Karton Boite Caja Коробки	Mq Sq. Mt Om Mq Mq Кв. м	Kg Kr Kg				
Lithos Breccia	D995 Lithos Breccia-60-Lap	DAIQ Lithos Breccia-60 Lap	60x60 Rettificato	3	1,08	27,81	40	43,20	1.112,54	9,5
Lithos Cremino	D997 Lithos Cremino-60-Lap	DAID Lithos Cremino-60 Lap	30x60 Gradone	2	0,36	10,00	-	-	-	-
Lithos Marfil	D999 Lithos Marfil-60-Lap	DAHP Lithos Marfil-60 Lap	8,4x60 Battiscopa	15	0,77	19,89	-	-	-	9,5
Lithos Venatto	DA65 Lithos Venatto-60-Lap	DAIP Lithos Venatto-60 Lap	60x60 D-Rosetón Lithos	4	1,44	36,47	-	-	-	-
Lithos Alabastro	D994 Lithos Alabastro-60-Lap	DAIN Lithos Alabastro-60 Lap	20x60 Rt-Ce-Lithos	4	0,48	12,15	-	-	-	9,5
Lithos Carrara	D996 Lithos Carrara-60-Lap	DAIM Lithos Carrara-60 Lap	20x20 Rt-T-Lithos	4	0,16	4,17	-	-	-	9,5
Lithos Grigio	D998 Lithos Grigio-60-Lap	DAIL Lithos Grigio-60 Lap	5x65 Ca-Lander	8	0,26	6,94	-	-	-	11,2
Lithos Zimbabwe	DA66 Lithos Zimbabwe-60-Lap	DAIJ Lithos Zimbabwe-60 Lap								

(lithos)

RIVESTIMENTO IN PASTA BIANCA / WHITE BODY WALL TILE / CARREAUX DE MUR EN PÂTE BLANCHE
WEISSSCHERBIGE WANDFLIESEN / REVESTIMIENTOS DE PASTA BLANCA / ОБЛИЦОВОЧНАЯ ПЛИТКА БЕЛОЙ ПASTЫ



25X76



Conforme/According to/Conforme
Gemäß/Conforme/Соответствует
UNI EN 14411 - L BIII



D756 LITHOS CARRARA 25X76



D758 LITHOS ALABASTRO 25X76



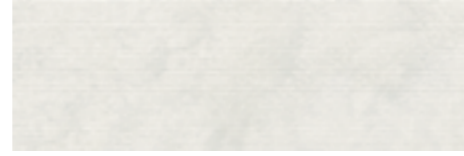
D754 LITHOS GRIGIO 25X76



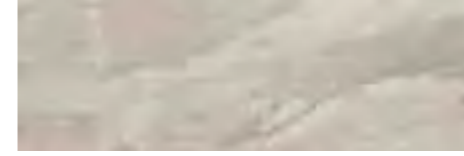
D752 LITHOS ZIMBAWE 25X76



D761 LITHOS CARRARA TRACCE 25X76



D759 LITHOS ALABASTRO TRACCE 25X76



D763 LITHOS GRIGIO TRACCE 25X76



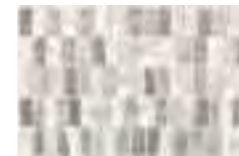
D765 LITHOS ZIMBAWE TRACCE 25X76



DAFB D-VERSALLES GRIS 25X76



D767 LITHOS SQUARE GRIS 25X76



DAER PEBBLE LITHOS
GREY 25X38 (4)



DAF9 MS-LITHOS
GREY MIX 30X30 (1)



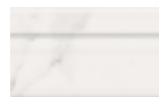
DAFN L-VERSALLES GRIS 5X76



DABP L-PERFIL-76 0,5X76 (12)



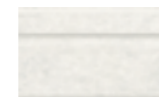
DAFQ L-PARTERRE GRIS 2,5X76



DAGB Z-LITHOS
CARRARA 15X25



DAFG L-LITHOS
CARRARA 5X25



DAGA Z-LITHOS
ALABASTRO 15X25



DAFF L-LITHOS
ALABASTRO 5X25



DAG9 Z-LITHOS
GRIGIO 15X25



DAFE L-LITHOS
GRIGIO-25 5X25



DAG8 Z-LITHOS
ZIMBAWE 15X25

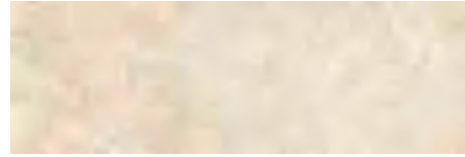


DAFD L-LITHOS
ZIMBAWE 5X25

RIVESTIMENTO IN PASTA BIANCA / WHITE BODY WALL TILE / CARREAUX DE MUR EN PÂTE BLANCHE
WEISSSCHERBIGE WANDFLIESEN / REVESTIMIENTOS DE PASTA BLANCA / ОБЛИЦОВОЧНАЯ ПЛИТКА БЕЛОЙ ПАСТЫ



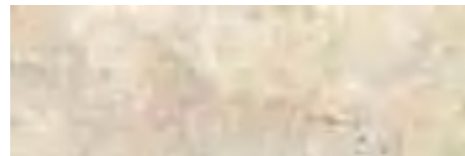
D753 LITHOS MARFIL 25X76



D755 LITHOS CREMINO 25X76



D764 LITHOS MARFIL TRACCE 25X76



D762 LITHOS CREMINO TRACCE 25X76



DAFM D-VERSALLES MARFIL 25X76



D768 LITHOS SQUARE BEIGE 25X76



DAFP L-VERSALLES MARFIL 5X76



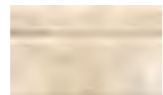
DAFR L-PARTERRE BEIGE 2,5X76



DAFZ L-LITHOS
MARFIL 15X25



DAFK L-LITHOS
MARFIL 5X25



DAFL Z-LITHOS
CREMINO 15X25

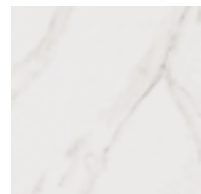


DAFV L-LITHOS
CREMINO 5X25

PAVIMENTI COORDINATI / CO-ORDINATED FLOORS / CARREAUX DE SOL ASSORTIS / KOORDINIERT-BODENBELÄGE / PAVIMENTOS COORDINADOS / КООРДИНИРОВАННЫЕ ПОЛЫ

LITHOS 60X60

Conforme/According to/Conforme
Gemäß/Conforme/Соответствует
UNI EN 14411 - G Bla



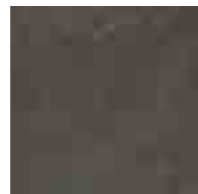
D818 RT-LITHOS
CARRARA LAP 60X60
F



D816 RT-LITHOS
ALABASTRO LAP 60X60
F



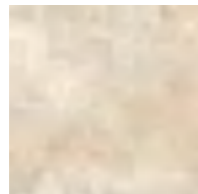
D820 RT-LITHOS
GRIGIO LAP 60X60
F



D823 RT-LITHOS
ZIMBAWE LAP 60X60
F



D821 RT-LITHOS
MARFIL LAP 60X60
F



D819 RT-LITHOS
CREMINO LAP 60X60
F



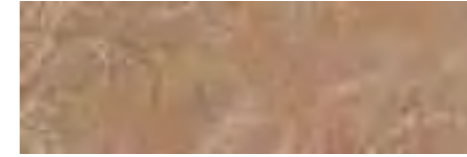
D817 RT-LITHOS
BRECCIA LAP 60X60
F



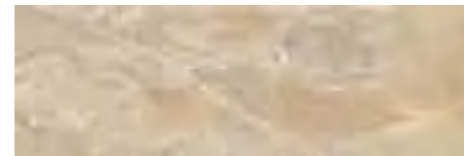
D822 RT-LITHOS
VENATTO LAP 60X60
F



D757 LITHOS BRECCIA 25X76



D751 LITHOS VENATTO 25X76



D760 LITHOS BRECCIA TRACCE 25X76



D766 LITHOS VENATTO TRACCE 25X76



DAES PEBBLE LITHOS
BEIGE 25X38 (4)



DAEV MS-LITHOS
BEIGE MIX 30X30 (1)



DAG3 Z-LITHOS
BRECCIA 15X25



DAFI L-LITHOS
BRECCIA 5X25



DAGC Z-LITHOS
VENATTO 15X25



DAFH L-LITHOS
VENATTO 5X25

lithos

FONDI / BASES / FONDS
GRUNDFLIESEN / FONDOS
ФОНОВАЯ ПЛИТКА



LITHOS
CARRARA



LITHOS
ALABASTRO



LITHOS
GRIGIO



LITHOS
ZIMBAWE



LITHOS
MARFIL



LITHOS
CREMINO



LITHOS
BRECCIA



LITHOS
VENATTO

PAVIMENTI ABBINATI / MATCHING FLOOR TILES / REVÊTEMENTS DE SOL POUVANT ÊTRE ASSORTIS / KOMBINIERBARE BODENBELÄGE / PAVIMENTOS COMBINABLES / СОЧЕТАЮЩИЕСЯ НАПОЛЬНЫЕ МАТЕРИАЛЫ

TREVERKMOOD



FAGGIO



ROVERE



NOCE



MOGANO



FAGGIO



ROVERE



NOCE



MOGANO



FAGGIO



ROVERE



NOCE



MOGANO

IMBALLI PACKING EMBALLAGES VERPACKUNGEN EMBALAJES УПАКОВКИ	Pezzi Pieces Stck Pièces Piezas Штуки			Mq Sq. Mt Qm Mq Mq Кв. м			Kg Kr Kg Kr Kg Kr			Spessore Thickness Dicke Épaisseur Толщина																																													
	25x76	25x76 Tracce	25x76 Lithos Square	25x76 D-Versalles	25x38 Pebble	60x60 Rettificato	30x30 Ms-Lithos	2,5x76 L-Parterre	5x25 L-Lithos		5x76 L-Versalles	15x25 Alzata	0,5x76 L-Perfil-76																																										
	5	5	5	2	14	3	0,95	0,95	0,95	0,38	1,33	1,08	18,64	18,64	18,64	7,46	19,01	27,81	54	54	54	-	54	40	51,30	51,30	51,30	-	71,82	43,20	1.112,54	11,5	11,5	11,5	11,5	8,5	9,5	0,36	0,08	0,08	0,15	0,23	0,02	6,00	1,15	1,80	2,10	5,60	0,35	11,5	11,5	11,5	11,5	11,5	-