

# Special articles



The sanitary ware used in public buildings is subject to far more demanding requirements than its domestic counterpart. In hospitals, schools and public conveniences they need to work perfectly over long periods and thus have to fulfil very different requirements. LAUFEN calls the products it designs to fulfil these

requirements "special articles". Particular special features, such as the clean lines they have on their upper surfaces and continuous overflow channel, give our robust sanitary ware exceptional hygiene, clear lines without nooks and crannies where germs can accumulate, and lasting quality.



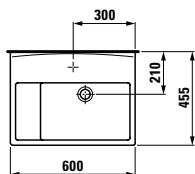
# Special articles

85760.0.000

college, school washbasin, without tap hole

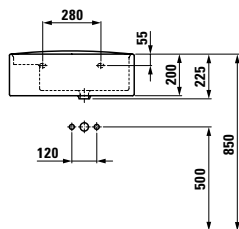
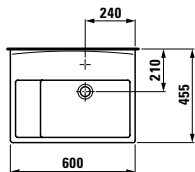
85760.0.104

college, school washbasin, with tap hole at centre of washbasin



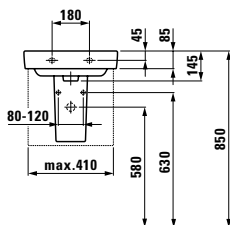
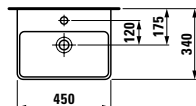
85760.0.503

college, school washbasin, with tap hole at centre of basin



81596.1

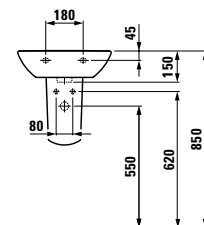
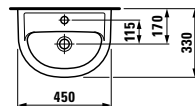
LAUFEN pro S washbasin, without overflow, without open drain



Options: .142 .156

81595.2

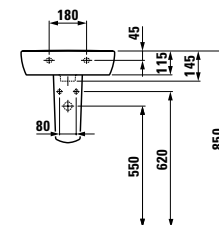
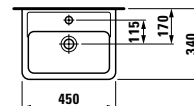
LAUFEN pro B washbasin, without overflow, without open drain



Options: .142 .156

81195.1

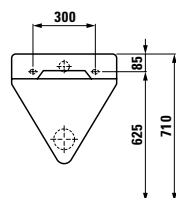
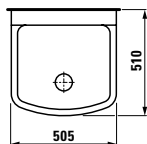
LAUFEN pro A washbasin, without overflow, without open drain



Options: .142 .156

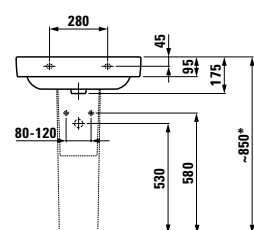
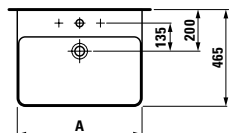
85421.1

bernina wall sink including grating



LAUFEN pro S washbasin, without overflow, without open drain

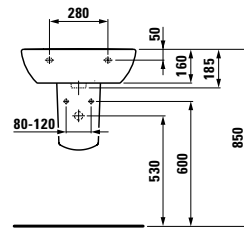
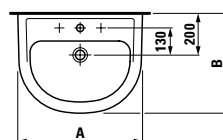
	A
81096.2	550
81096.3	600
81096.4	650
81096.7	700



Options: .142 .156

LAUFEN pro B washbasins, without overflow, without open drain

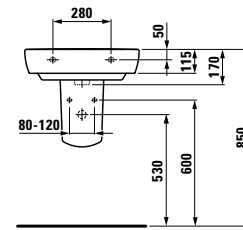
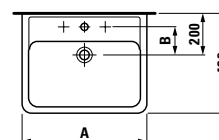
	A	B
81095.1	550	440
81095.2	600	480
81095.3	650	500



Options: .142 .156

LAUFEN pro A washbasins, without overflow, without open drain

	A	B
81895.1	550	135
81895.2	600	135
81895.3	650	130



Options: .142 .156