

LIS Laufen Installation Systems



The Laufen installation systems are the perfect solution to mount WCs of Laufen easily and quickly. Different dry-wall and brick-wall construction elements belong to the assortment tailored to help realize highly diverse building scenarios in main or guest bathrooms. All construction elements feature a cistern equipped with a dual flush of 6/3 Liter, that can be adjusted to 4.5/3 Liter. Two matching Laufen actuator plates, AW1 and AW2 Inox are available in a distinct simple and timeless design.



CW1



CW2



CW3

Wall-hung WCs can be mounted effectively and securely in dry-wall construction thanks to LIS. Only a minimum space width of 140 millimeter is required. In addition, a freestanding version is also available that does not require a supporting wall. A water saving cistern with dual flush is already built into the construction elements, the flush volume can be chosen from 6/3 to 4.5/3 Liter. A fixing kit as well as the connecting pipes are included in the scope of delivery, the version CW2 also comes with a connecting pipe needed for the shower toilet installation. Matching the modules, the actuator plates AW1 and AW2 Inox conclude the assortment.



TW1

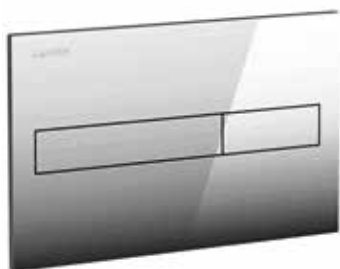


TW2

LIS allows the installation of WCs with high-level cisterns on half-wall or brick wall constructions, requiring only 125 millimeter width of space. A water saving, dual flush cistern with 6/3 liter adjustable to 4.5/3 liter as well as the connecting pipe to the WC belong to the assortment. As compatible actuator plates AW1 or AW2 Inox can be chosen.

LIS Laufen Installation Systems

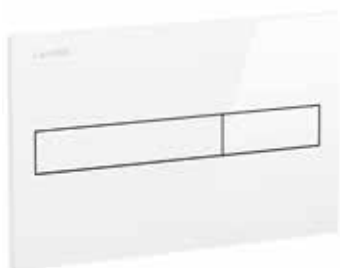
AW1



.004 chrome



.007 chrome matt



.000 white

AW2

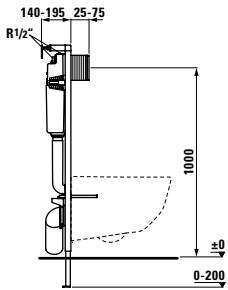
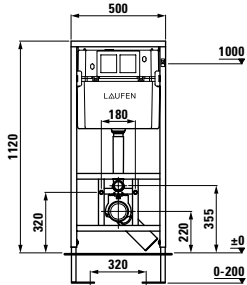


With LIS LAUFEN provides a reliable construction system for dry-wall and brick-wall installation. Matching actuator plates in the best design tradition of LAUFEN are also available. All of them are designed for water-saving dual flush. The variant AW1 ce chosen with different surfaces, whereas the variant AW2 consists of extremely durable stainless steel and is therefore particularly suitable for public and semi-public sanitary rooms.

LIS Laufen Installation Systems

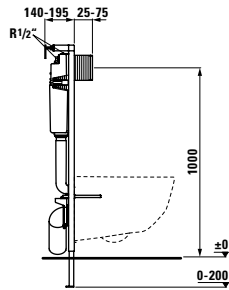
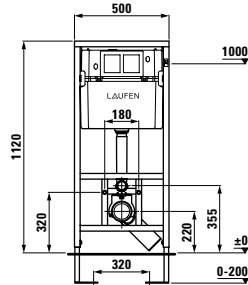
CW1, 89466.0

Concealed frame with cistern for wallhung WC, dual flush 6/3L, adjustable to 4.5/3L



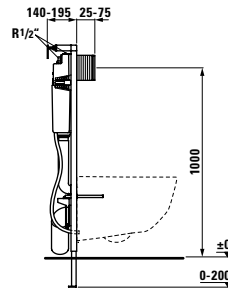
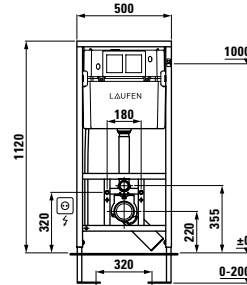
CW1, 4.5L 89466.5

Concealed frame with cistern for wallhung WC, dual flush 4.5/3L, adjustable to 6/3L



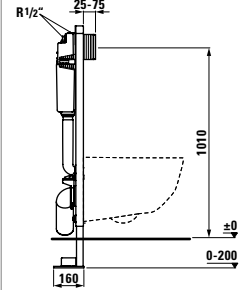
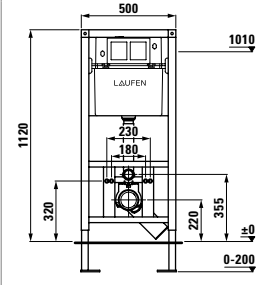
CW2, 89466.1

Concealed frame with cistern for wallhung WC with integrated pipe for water supply, dual flush 6/3L, adjustable to 4.5/3L



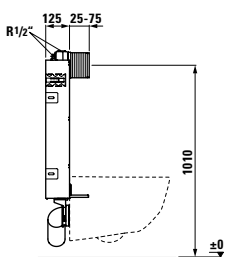
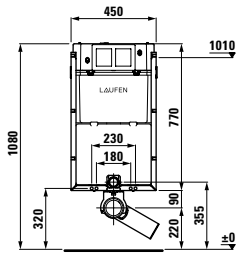
CW3, 89466.2

Concealed self-supporting frame with cistern for wallhung WC, dual flush 6/3L, adjustable to 4.5/3L



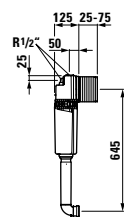
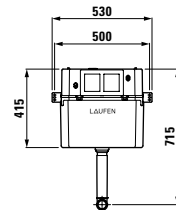
TW1, 89466.3

Concealed cistern for wallhung WC, dual flush 6/3L, adjustable to 4.5/3L



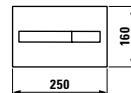
TW2, 89466.4

Concealed cistern, dual flush 6/3L, adjustable to 4.5/3L



AW1, 89566.1

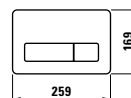
Actuator plate, dual flush



Colours: .000 .004 .007

AW2, 89566.2

Actuator plate, dual flush



Colours: .000

For European water label see page 358