

Steel bathtubs and shower trays



There are few things in life that will last a lifetime. Bathtubs and shower trays of LAUFEN are produced using heavy 3 and 3.5 millimetres enamelled steel, which is extremely durable and dimensionally stable, as well as resistant to scratching, impacts and abrasion. As steel is a good conductor of heat, you will immediately have a warm, pleasant feeling, when your skin touches the surface.

Shower trays and bathtubs made of enamelled steel are very easy to clean – the non-porous surface gives dirt and bacteria less chance to adhere. In addition, the smooth glass finish that covers the steel is resistant to acidic cleaning agents. That's hygiene made easy!

To give a free hand for planning, the bathtubs and shower trays are available in many different heights and sizes. In addition, LAUFEN paid special attention that the available colours match perfectly with the colours of the ceramics in your bathroom – because relaxation starts with the visual impression.

For maximum convenience, several shower trays can be installed floor even to avoid stumbling hazards and both the bathtubs and shower trays are equipped with an anti-slip coating. Furthermore there is a bunch of accessories like handles or gel pillows to increase your comfort while taking a bath or a shower – and an optional structural sound insulation system that ensures that you are not disturbed in doing so.

- 1 LAUFEN pro
- 2 thallium
- 3 indura
- 4 platina



Steel bathtubs and shower trays

Bathtubs, steel Rectangular



LAUFEN pro
1700x750 mm
1800x800 mm



LAUFEN pro
1500x700 mm
1500x750 mm
1600x700 mm
1700x700 mm
1700x750 mm



thallium
1800x800 mm



palladium
1700x750 mm
1800x800 mm

Bathtubs, steel oval



thallium oval
1800x800 mm

Shower trays, steel
Square



platina
extra flat, 25 mm deep
800x800 mm
900x900 mm
1000x1000 mm



platina
flat, 65 mm deep
800x800 mm
900x900 mm
1000x1000 mm



platina
150 mm deep
800x800 mm
900x900 mm



indura
900x900 mm
1000x1000 mm

Shower trays, steel
Rectangular



platina
extra flat, 25 mm deep
900x750 mm
1200x800 mm
1400x800 mm



platina
extra flat, 65 mm deep
900x750 mm
1200x800 mm
1400x800 mm



platina
150 mm deep
900x750 mm



indura
1000x800 mm
1200x800 mm



indura
1400x700 mm
1400x800 mm

Shower trays, steel
Corner



platina
extra flat, 25 mm deep
900x900 mm
1000x1000 mm



platina
flat, 65 mm deep
900x900 mm
1000x1000 mm

22095.0.040

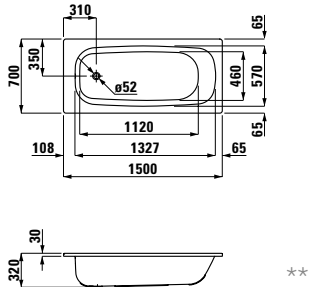
Bathtub, enameled steel 3 mm, 1500x700x320 mm, fitted version, with anti-noise pads

22095.3.040

Same as above, with holes for handles

29410.2

Bathtub handles chrome plated



22395.0.040

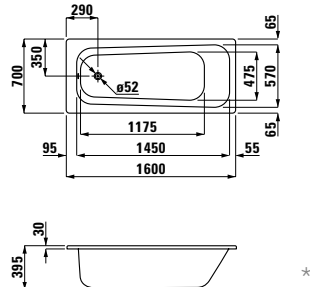
Bathtub, enameled steel 3.5 mm, 1600x700 mm, fitted version, with anti-noise pads

22395.3.040

with holes for handle

29618.2

Bathtub handles, chrome plated



22695.0.040

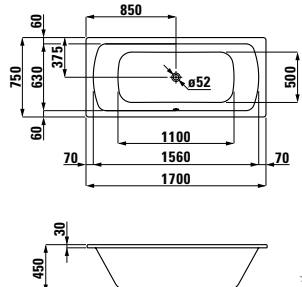
Bathtub, enameled steel 3.5 mm, 1700x800 mm, fitted version, outlet at centre, with anti-noise pads

22695.3.040

with holes for handles

29618.5

Bathtub handles, chrome plated



22509.0.040

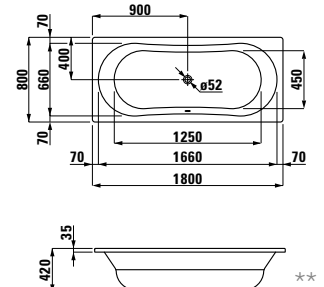
Bathtub, enameled steel 3 mm, 1800x800 mm, fitted version, outlet at centre, with anti-noise pads

22509.3.040

with holes for handle

29618.4

single bathtub handle, chrome plated



22195.0.040

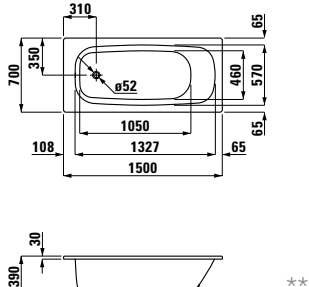
Bathtub, enameled steel 3 mm, 1500x700x400 mm, fitted version, with anti-noise pads

22195.3.040

Same as above, with holes for handles

29410.2

Bathtub handles chrome plated



22495.0.040

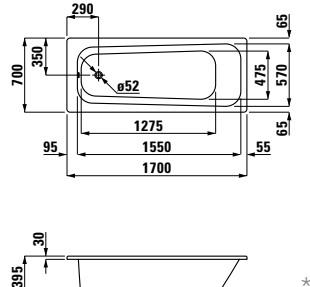
Bathtub, enameled steel 3.5 mm, 1700x700 mm, fitted version, with anti-noise pads

22495.3.040

with holes for handles

29618.2

Bathtub handles chrome plated



22795.0.040

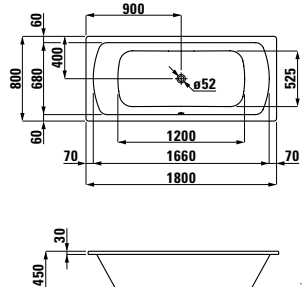
Bathtub, enameled steel 3.5 mm, 1800x800 mm, fitted version, outlet at centre, with anti-noise pads

22795.3.040

with holes for handles

29618.5

Bathtub handles chrome plated



22508.0.040

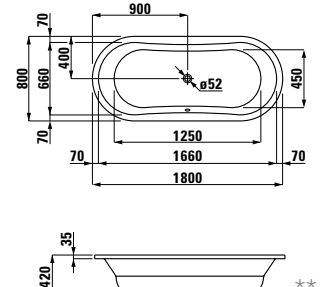
Bathtub, enameled steel 3 mm, 1800x800 mm, fitted version, outlet at centre, with anti-noise pads

22508.3.040

with holes for handles

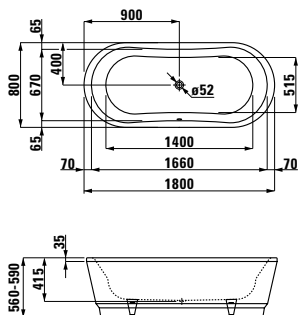
29618.4

single bathtub handle, chrome plated



22508.2.040

freestanding bathtub with acrylic panel and pre-installed siphon



22295.0.040

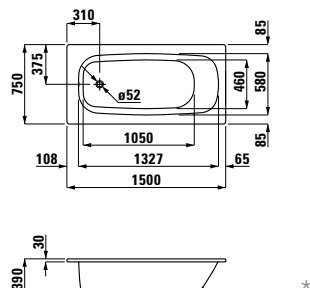
Bathtub, enameled steel 3 mm, 1500x750x400 mm, fitted version, with anti-noise pads

22295.3.040

Same as above, with holes for handles

29410.2

Bathtub handles chrome plated



22595.0.040

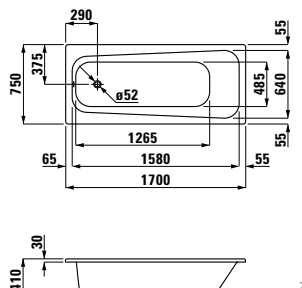
Bathtub, enameled steel 3.5 mm, 1700x750 mm, fitted version, with anti-noise pads

22595.3.040

with holes for handles

29618.2

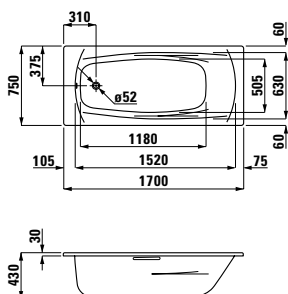
Bathtub handles, chrome plated



palladium

22511.0.040

Bathtub, enameled steel 3,5 mm, 1700x750 mm, fitted version, with anti-noise pads



22511.3.040

Bathtub, enameled steel 3,5 mm, 1700x750 mm, fitted version, with anti-noise pads, with holes for handles

29410.2

Bathtub handles chrome plated, for palladium 22511.3

29617.1

Feet, adjustable height 13,5-19cm

29410.3.016.000.1

Self-adhesive gel cushion



Colours bathtubs

 .000 white

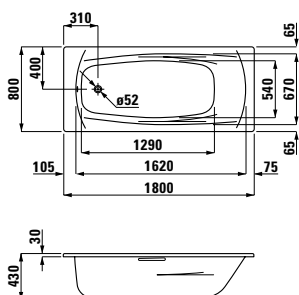
 .600 white antislip

* 29617.1 Feet

** 29617.2 Feet, adjustable height 13,5-19cm

22510.0.040

Bathtub, enameled steel 3,5 mm, 1800x800 mm, fitted version, with anti-noise pads



22510.3.040

Bathtub, enameled steel 3,5 mm, 1800x800 mm, fitted version, with anti-noise pads, with holes for handles

29410.2

Bathtub handles chrome plated

29617.1

Feet, adjustable height 13,5-19cm

platina (25 mm)

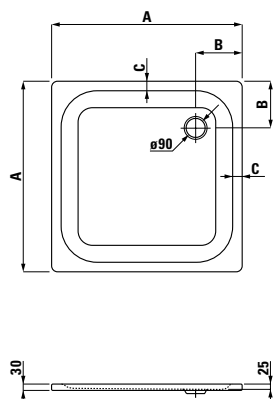
Square shower tray, enameled steel 3,5 mm, 25 mm extra flat, with anti-noise pads

	A	B	C
21500.1.040	800	220	45
21500.2.040	900	220	45
21500.4.040	1000	270	95

Styrofoam carrier for installation flush with floor:

29598.0 for shower tray 21500.2

29598.1 for shower tray 21500.4



platina (65 mm)

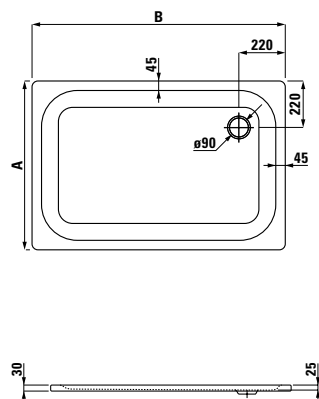
Rectangular shower tray, enameled steel 3,5 mm, 25 mm extra flat, with anti-noise pads

	A	B
21500.3.040	750	900
21500.5.040	800	1200
21500.6.040	800	1400

Styrofoam carrier for installation flush with floor:

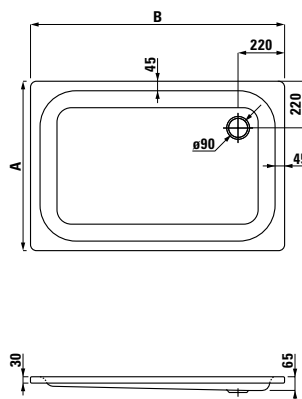
29598.2 for shower tray 21500.5

29598.3 for shower tray 21500.6



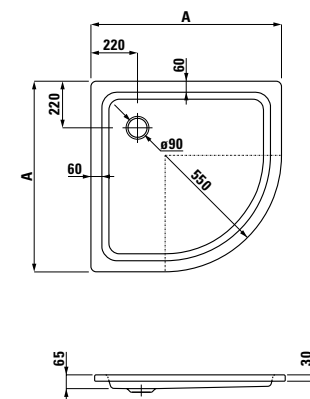
Rectangular shower tray, enameled steel 3,5 mm, 65 mm flat, with anti-noise pads

	A	B
21501.3.040	750	900
21501.5.040	800	1200
21501.6.040	800	1400



Corner shower tray, enameled steel 3,5 mm, 65 mm flat, with anti-noise pads

	A
21501.8.040	900
21501.9.040	1000



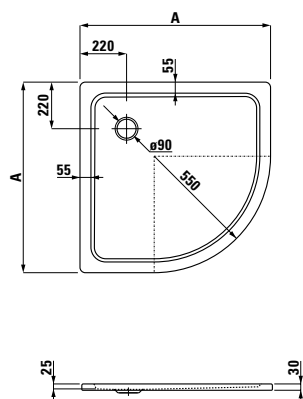
Corner shower tray, enameled steel 3,5 mm, 25 mm extra flat, with anti-noise pads

	A
21500.8.040	900
21500.9.040	1000

Styrofoam carrier for installation flush with floor:

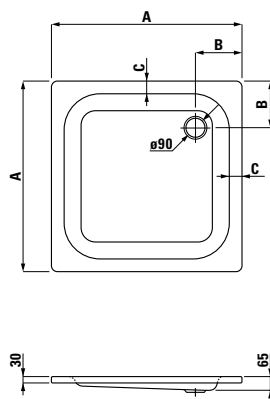
29598.4 for shower tray 21500.8

29598.5 for shower tray 21500.9



Square shower tray, enameled steel 3,5 mm, 65 mm flat, with anti-noise pads

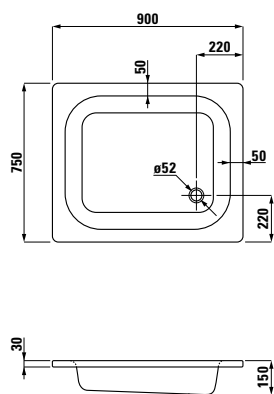
	A	B	C
21501.1.040	800	220	55
21501.2.040	900	220	55
21501.4.040	1000	270	100



platina (150 mm) indura

21502.3.040

Rectangular shower tray, enameled steel 3,5 mm, 900x750 mm, 150 mm deep, with anti-noise pads






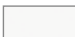


Square shower tray, enameled steel 3,5 mm, even to floor, with anti-noise pads

	A	B	C
21507.1.040	900	900	450
21507.2.040	1000	1000	500

Rectangular shower tray, enameled steel 3,5 mm, even to floor, with anti-noise pads

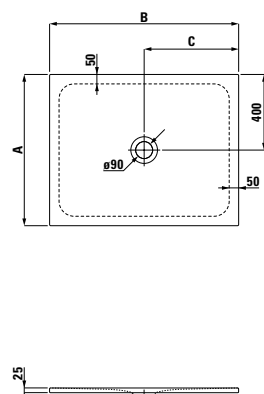
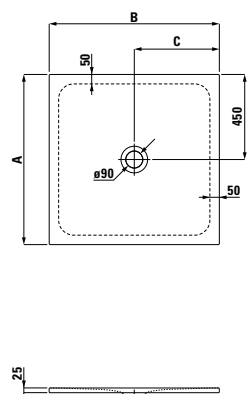
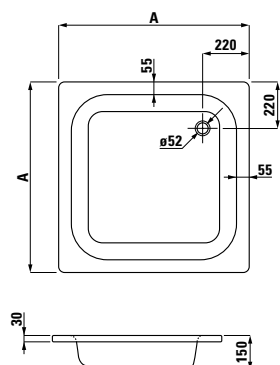
	A	B	C
21507.3.040	800	1000	500
21507.4.040	800	1200	600
21507.5.040	700	1400	700
21507.6.040	800	1400	700

Colours shower trays indura

-  .000 white
-  .600 white anti-slip
-  .757 white matt
-  .657 white matt anti-slip
-  .076 anthracite
-  .676 anthracite anti-slip

Square shower tray, enameled steel 3,5 mm, 800x800 mm, 150 mm deep, with anti-noise pads

	A
21502.1.040	800
21502.2.040	900



Colours shower trays platina

-  .000 white
-  .600 white anti-slip