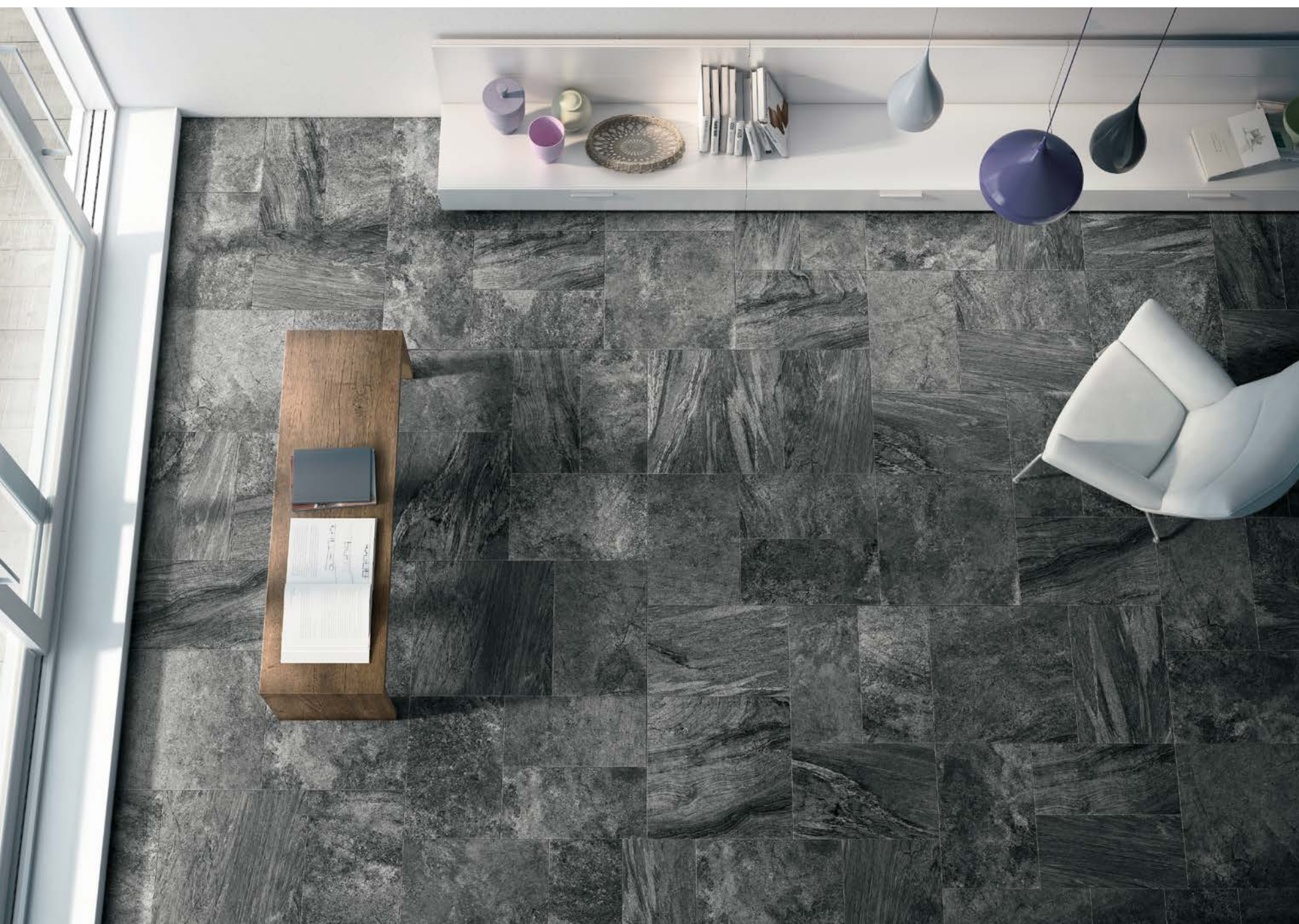


Pretiosa

Pietre naturali in un elegante matrimonio di stile. Pretiosa è un'avvolgente miscela di elementi e movimenti diversi, amalgamati da un unico timbro di fondo. Vivacizzati da formati, colori e decori di moderna progettazione.

 **LAFENZA**
CERAMICA

bece  Italian dal 1874





Pretiosa

PRETIOSA 36A

PRETIOSA 46A

PRETIOSA 46T

PRETIOSA 60A

Pietre naturali in un elegante matrimonio di stile. Pretiosa è un'avvolgente miscela di elementi e movimenti diversi, amalgamati da un unico timbro di fondo. Vivacizzati da formati, colori e decori di moderna progettazione.

Natural stones in an elegant blend of styles. Pretiosa is an encompassing mixture of different elements and movements, united by a single background tone. Brought to life by shapes, colours and decorations with a modern design.

Pierres naturelles dans un élégant mariage de style. Pretiosa un mélange d'éléments et de mouvements superbes qui s'amalgament dans un fond de ton unique. Des formats, couleurs et décorums modernes les animent.

Natürliche Steine, elegant und stilvoll miteinander verbunden. Pretiosa ist eine faszinierende Melange aus verschiedenen Elementen und Bewegungen, die sich über einen einzigen Grundton vermischen. Lebendig gemacht durch Formate, Farben und Dekors, die der modernen Planung gerecht werden.

Piedras naturales creadoras de una elegante unión de estilo. Pretiosa es una mezcla envolvente de elementos y movimientos distintos, amalgamados por un único timbre de fondo. Avivados por formatos, colores y decoraciones de proyección moderna.

Натуральные камни в элегантной гармонии безупречного вкуса. Pretiosa – это захватывающее смешение элементов и движений, объединенных одним фоновым тоном. Оживленное форматами, расцветками и декорами современного проектирования.

Prirodni kamen u elegantnom stilskom braku. Pretiosa je klupko miješanih elemenata i pokreta, u fuziji jedinstvenog temeljnog pečata. Oživljena formatima, bojama i ukrasima modernog dizajna.

天然石材与优雅风格的完美结合。Pretiosa系列将各种元素和潮流融合为独一无二的底色，令人神往。各种不同规格、颜色和现代设计装饰细节更增添丰富多样性。

Pretiosa

A.PRETIOSA 15T

L.PRETIOSA 156W

PRETIOSA 60G





Pretiosa

PRETIOSA 36G

PRETIOSA 46G

PRETIOSA 60G





Pretiosa

L.PRETIOSA 156W

PRETIOSA 36W

PRETIOSA 60W

Pretiosa

PRETIOSA 36T

PRETIOSA 46T

PRETIOSA 60T





Pretiosa

L.PRETIOSA 156W

PRETIOSA 36W

PRETIOSA 60W

Pretiosa

A.ROS.PRETA LP

L.ROS.PRETA LP

PRETIOSA 60A LP

ROS.PRETA LP





Pretiosa

PRETIOSA 36A

PRETIOSA 46A

PRETIOSA 46T

PRETIOSA 60A



bianco



almond



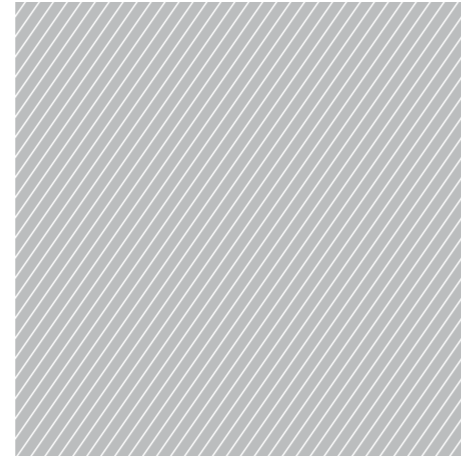
grigio



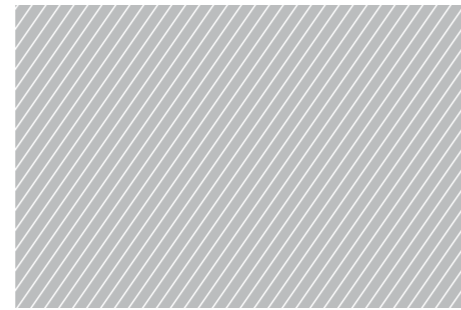
marrone



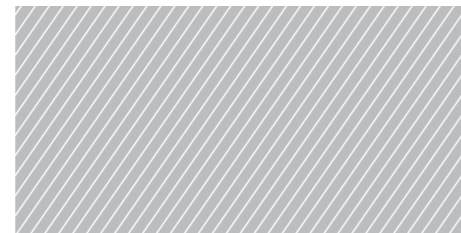
grigio scuro



60x60 / 24"x24"



40x60 / 16"x24"



30x60 / 12"x24"

PORCELLANATO SMALTATO

GLAZED PORCELAIN TILES
GRÈS CÉRAME EMAILLÉ
GLASIERTES FEINSTEINZEUG
PORCELÁNICO ESMALTADO
КЕРАМОГРАНИТ ГЛАЗУРОВАННЫЙ
PORCULANSKO-KAMENE PLOČICE GLAZIRANE
上釉仿石瓷磚

COLORI

COLOURS
COLORIS
FARBEN
COLDRI
ЦВЕТА
BOJE
顏色

FORMATI

SIZES
FORMATS
FORMATE
FORMATOS
ФОРМАТЫ
FORMATI
版型

SUGGESTED APPLICATIONS
DESTINATION
ANWENDUNGSBEREICH
LUGAR DE EMPLEO
ПРЕДНАЗНАЧЕНИЕ
KRAJNJA NAMJENA
用途

DESTINAZIONI D'USO



abitazioni

DOMESTIC PURPOSE
HABITATION
WOHNBEREICH
HABITACIÓN
ЖИЛОЕ ПОМЕЩЕНИЕ
STANOVANJE
住宅

INDICATIONS FOR USE
INSTRUCTIONS D'UTILISATION
ANWENDUNGSBEREICH
INDICACIONES DE USO
УКАЗАНИЯ ПО ИСПОЛЬЗОВАНИЮ
UPUTE O KORIŠTENJU
使用说明

INDICAZIONI D'USO



pavimento

FLOOR TILES
SOL
BODEN
PISO
ПОЛ
PODOVI
地板



rivestimento

WALL TILES
REVÊTEMENT
WAND
REVESTIMIENTO
ОБЛИЦОВКА
ZIDOVİ
墙面

TIPOLOGY OF GLAZE
TYPOLOGIE D'EMAIL
TYPOLOGIE DER GLASUR
TIPOLOGÍA DE ESMALTE
ТИПОЛОГИЯ ЭМАЛИ
TIPOLOGIJA EMAJLA
釉料类型

TIPOLOGIA DI SMALTO



smalto
lucido

GLOSSY GLAZE
EMAIL BRILLANT
GLÄNZENDE GLASUR
ESMALTE BRILLANTE
ГЛЯНЦЕВАЯ ГЛАЗУРЬ
EMAJLIRANE SJAJNO
高光釉



smalto
opaco

MATT GLAZE
EMAIL OPAQUE
MATTE GLASUR
ESMALTE OPACO
МАТОВАЯ ГЛАЗУРЬ
EMAJLIRANE MAT
亚光釉

SURFACE FINISH
FINITION SUPERFICIELLE
OBERFLÄCHEN
ACABADO SUPERFICIAL
ПОВЕРХНОСТНАЯ ОТДЕЛКА
POVRŠINSKA DOVRSENJA
表面处理

FINITURA SUPERFICIALE



naturale

NATURAL
NATUREL
NATUR
MATT
ПРИРОДНЫЙ
PRIRODNE
自然式



lappato

HONED
ADOUCI
ANPOLIERT
ESMERILLADO
ПОЛУПОЛИРОВАННЫЙ
POLIRANE
磨砂式



strutturato

SLATE CUT
STRUCTURÉ
STRUKTURIERT
ESTRUCTURADO
СТРУКТУРИРОВАННЫЙ
STRUKTURIRANE
结构式

EDGE
BORD
RAND
BORDE
КРОМКА
RUB
边缘

BORDO



rettificato
monocalibro

MONOCALIBER, RECTIFIED
RECTIFIÉ MONOCALIBRE
RETTIFIZIERT MONOCALIBER
RECTIFICADO MONOCALIBRE
РЕКТИФИЦИРОВАННЫЙ МОНОКАЛИБР
RETFICIRANE MONOKALIBARSKE
单尺寸研磨式



modulare 2mm

MODULAR 2 mm
MODULAIRE 2 mm
MODUL 2 mm
MODULAR 2 mm
МОДУЛЬНЫЙ 2 mm
MODULARNE 2 mm
模块式 2 mm

SHADE VARIATION
VARIATION DE NUANCES
SCHATTIERUNG
DESTONALIZACIÓN
РАЗБОС ЦВЕТОВОГО ТОНА
GRADACIJA
石质化

STONALIZZAZIONE



V3

Pretiosa

SIMBOLOGIA

SYMBOLS
SYMBOLES
SYMBOLE
SIMBOLOS
СИМВОЛЫ
СИСТЕМА СИМВОЛОВ
SIMBOLI
标识

N



PRETIOSA 60A
60x60 - 24"x24"



PRETIOSA 46A
40x60 - 16"x24"



PRETIOSA 36A
30x60 - 12"x24"

LP



PRETIOSA 60A LP
60x60 - 24"x24"



PRETIOSA 46A LP
40x60 - 16"x24"



PRETIOSA 36A LP
30x60 - 12"x24"

R



PRETIOS.60A R10
60x60 - 24"x24"



PRETIOS.46A R10
40x60 - 16"x24"



PRETIOS.36A R10
30x60 - 12"x24"

LP



ROS.PRETA LP
120x120 - 48"x48"



L.ROS.PRETA LP
20x60 - 8"x24"



A.ROS.PRETA LP
20x20 - 8"x8"

N



PRETIOSA 60AT 1
60x60 - 24"x24"



PRETIOSA 60AW 1
60x60 - 24"x24"



L.PRETIOSA 156A
15x60 - 6"x24"



A.PRETIOSA 15A
15x15 - 6"x6"



MK.PRETIOSA 30A
30x30 - 12"x12"

Pretiosa

PAVIMENTI E RIVESTIMENTI
 FLOOR TILES AND WALL TILES
 SOL ET REVÊTEMENT
 BODENFLIESE UND WANDFLIESE
 PAVIMENTO Y RIVESTIMIENTO
 НАПОЛЬНАЯ И ОБЛИЦОВОЧНАЯ ПЛИТКА
 PODOVI I ZIDOVİ
 地面与墙面

PORCELLANATO SMALTATO
 GLAZED PORCELAIN TILES
 GRÉS CÉRAME ÉMAILLÉ
 GLASIERTES FEINSTEINZEUG
 PORCELÁNICO ESMALTADO
 КЕРАМОГРАНИТ ГЛАЗУРОВАННЫЙ
 PORCULANSKO-KAMENE PLOŠICE GLAZIRANE
 上釉仿石瓷砖

N 



PRETIOSA 60T
60x60 - 24"x24"



PRETIOSA 46T
40x60 - 16"x24"



PRETIOSA 36T
30x60 - 12"x24"

LP 



PRETIOSA 60T LP
60x60 - 24"x24"



PRETIOSA 46T LP
40x60 - 16"x24"



PRETIOSA 36T LP
30x60 - 12"x24"

R 



PRETIOS.60T R10
60x60 - 24"x24"



PRETIOS.46T R10
40x60 - 16"x24"



PRETIOS.36T R10
30x60 - 12"x24"

LP 



ROS.PRET.T LP
120x120 - 48"x48"



L.ROS.PRET.T LP
20x60 - 8"x24"



A.ROS.PRET.T LP
20x20 - 8"x8"

N 



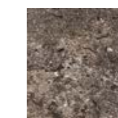
PRETIOSA 60AT 1
60x60 - 24"x24"



PRETIOSA 60GT 1
60x60 - 24"x24"



L.PRETIOSA 156T
15x60 - 6"x24"



A.PRETIOSA 15T
15x15 - 6"x6"



MK.PRETIOSA 30T
30x30 - 12"x12"

N



PRETIOSA 60W
60x60 - 24"x24"



PRETIOSA 46W
40x60 - 16"x24"



PRETIOSA 36W
30x60 - 12"x24"

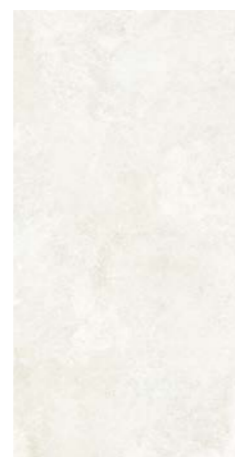
LP



PRETIOSA 60W LP
60x60 - 24"x24"



PRETIOSA 46W LP
40x60 - 16"x24"



PRETIOSA 36W LP
30x60 - 12"x24"

R



PRETIOS.60W R10
60x60 - 24"x24"



PRETIOS.46W R10
40x60 - 16"x24"



PRETIOS.36W R10
30x60 - 12"x24"

LP



ROS.PRET.W LP
120x120 - 48"x48"



L.ROS.PRET.W LP
20x60 - 8"x24"



A.ROS.PRET.W LP
20x20 - 8"x8"

N



PRETIOSA 60AW 1
60x60 - 24"x24"



L.PRETIOSA 156W
15x60 - 6"x24"



A.PRETIOSA 15W
15x15 - 6"x6"



MK.PRETIOSA 30W
30x30 - 12"x12"

N 



PRETIOSA 60G
60x60 - 24"x24"



PRETIOSA 46G
40x60 - 16"x24"



PRETIOSA 36G
30x60 - 12"x24"

LP 



PRETIOSA 60G LP
60x60 - 24"x24"



PRETIOSA 46G LP
40x60 - 16"x24"



PRETIOSA 36G LP
30x60 - 12"x24"

R 



PRETIOS.60G R10
60x60 - 24"x24"

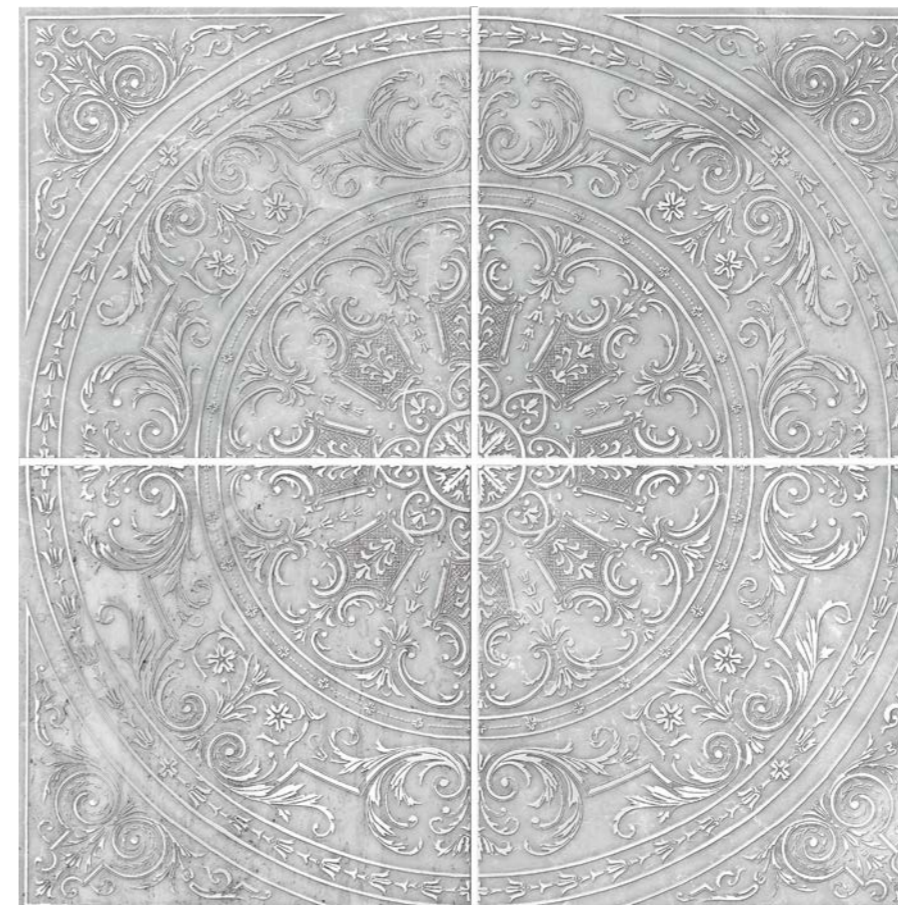


PRETIOS.46G R10
40x60 - 16"x24"



PRETIOS.36G R10
30x60 - 12"x24"

LP 



ROS.PRET.G LP
120x120 - 48"x48"



L.ROS.PRET.G LP
20x60 - 8"x24"



A.ROS.PRET.G LP
20x20 - 8"x8"

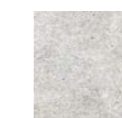
N 



PRETIOSA 60GT 1
60x60 - 24"x24"



L.PRETIOSA 156G
15x60 - 6"x24"



A.PRETIOSA 15G
15x15 - 6"x6"



MK.PRETIOSA 30G
30x30 - 12"x12"

N 



PRETIOSA 60DG
60x60 - 24"x24"



PRETIOSA 46DG
40x60 - 16"x24"



PRETIOSA 36DG
30x60 - 12"x24"

LP 



PRETIOSA 60DGLP
60x60 - 24"x24"



PRETIOSA 46DGLP
40x60 - 16"x24"

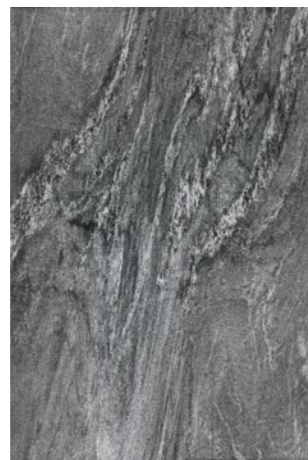


PRETIOSA 36DGLP
30x60 - 12"x24"

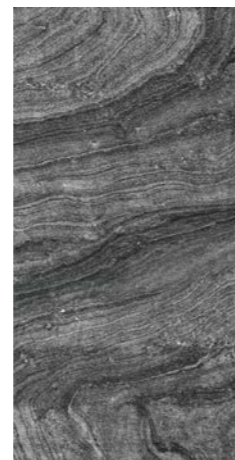
R 



PRETIOS.60DGR10
60x60 - 24"x24"

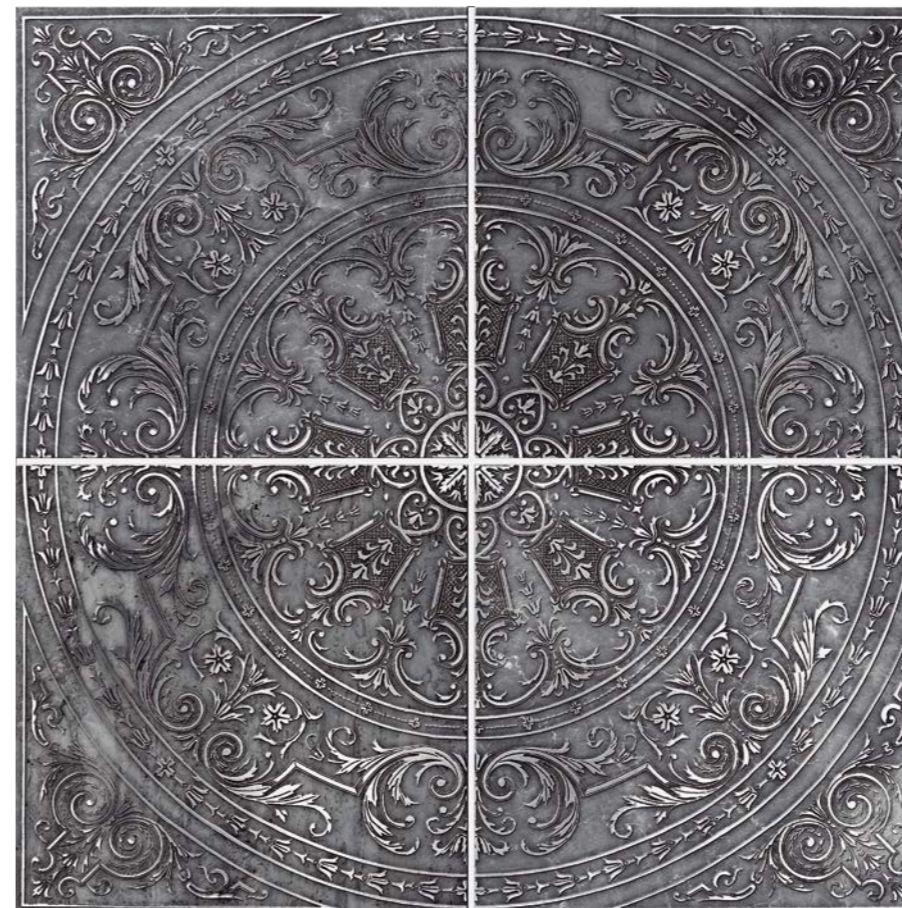


PRETIOS.46DGR10
40x60 - 16"x24"



PRETIOS.36DGR10
30x60 - 12"x24"

LP 



ROS.PRET.DG LP
120x120 - 48"x48"

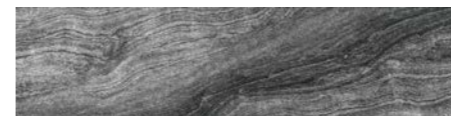


L.ROS.PRET.DG LP
20x60 - 8"x24"

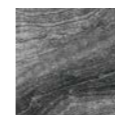


A.ROS.PRET.DG LP
20x20 - 8"x8"

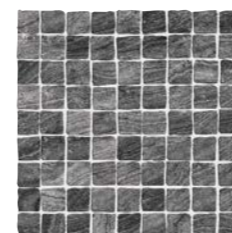
N 



L.PRETIOSA 156DG
15x60 - 6"x24"



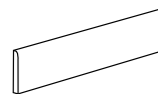
A.PRETIOSA 15DG
15x15 - 6"x6"



MK.PRETIOSA 30DG
30x30 - 12"x12"

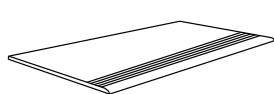
PEZZI SPECIALI

TRIMS / PIÈCES SPÉCIALES / SONDERSTÜCKE / PIEZAS ESPECIALES
СПЕЦИАЛЬНЫЕ ЭЛЕМЕНТЫ / NARČIŠTI DIJELOVI / 特制件



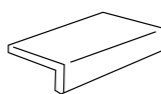
9,5x60 - 3.7"x24"

PRETIOSA BT60A
PRETIOSA BT60T
PRETIOSA BT60W
PRETIOSA BT60G
PRETIOSA BT60DG



30x60 - 12"x24"

PRETIOSA S60A
PRETIOSA S60T
PRETIOSA S60W
PRETIOSA S60G
PRETIOSA S60DG



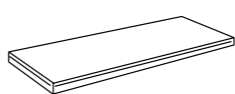
15x30x4 - 6"x12"x1.6"

PRETIOSA E30A R10
PRETIOSA E30T R10
PRETIOSA E30W R10
PRETIOSA E30G R10
PRETIOSA E30DG R10



60x32,5 - 24"x12.8"

PRETIOSA G60A R10
PRETIOSA G60T R10
PRETIOSA G60W R10
PRETIOSA G60G R10
PRETIOSA G60DG R10

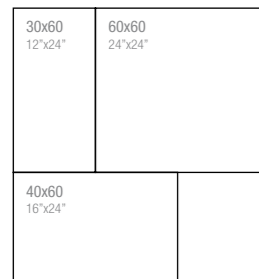


60x32,5 - 24"x12.8"

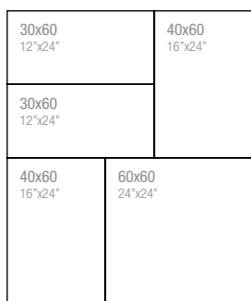
PRETIOSA A60ASX R10
PRETIOSA A60TSX R10
PRETIOSA A60WSX R10
PRETIOSA A60GSX R10
PRETIOSA A60DGSXR10
PRETIOSA A60ADX R10
PRETIOSA A60TDX R10
PRETIOSA A60WDX R10
PRETIOSA A60GDX R10
PRETIOSA A60GDXR10

MODULARE

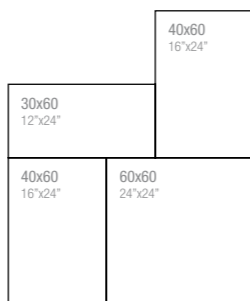
MODULAR / MODULAIRE / MODULE / MODULAR
МОДУЛЬНОСТЬ / MODULARNOST / 模块式



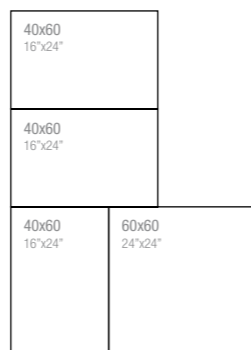
PERCENTUALI
30x60 - 12"x24" 23,08%
40x60 - 16"x24" 30,77%
60x60 - 24"x24" 46,15%



PERCENTUALI
30x60 - 12"x24" 30,00%
40x60 - 16"x24" 40,00%
60x60 - 24"x24" 30,00%



PERCENTUALI
30x60 - 12"x24" 17,65%
40x60 - 16"x24" 47,06%
60x60 - 24"x24" 35,29%



PERCENTUALI
40x60 - 16"x24" 66,67%
60x60 - 24"x24" 33,33%

CARATTERISTICHE TECNICHE SPECIFICHE

TECHNICAL FEATURES SPECIFICATIONS / CARACTÉRISTIQUES TECHNIQUES SPÉCIFIQUE / TECHNISCHE EIGENSCHAFTEN / CARACTERÍSTICAS TÉCNICAS ESPECIFICAS
ТРЕБУЕМЫЕ ТЕХНИЧЕСКИЕ ХАРАКТЕРИСТИКИ / SPECIFIČNA TEHNIČKA SVOJSTVA / 特殊技术规格

G = Gres porcellanato smaltato / Glazed porcelain tiles / Grès cérame émaillé / Glasiertes Feinsteinzeug / Porcelánico esmaltado/ Керамогранит глазурованный / Porculansko-kamene pločice glazirane / 上釉仿石瓷砖

| PROGETTO | TIP | ARTICOLO | DIN 51130 (R) | DIN 51130 (R) | DIN 51097 (A+B+C) | ASTM C1028/96 | | BCR Rep.CEC 6/81 | | DM 14/6/89 n.236 | |
|--------------|-----|----------------|---------------|---------------|-------------------|---------------|-------|------------------|-------|------------------|-------|
| | | | | | | n.a. | n.b. | g.a. | g.b. | c.a. | g.b. |
| PRETIOSA | G | PRETIOSA A | 5 | R9 | A | > 0,6 | > 0,6 | > 0,4 | > 0,4 | > 0,4 | > 0,4 |
| | | PRETIOSA G | 5 | | | | | | | | |
| | | PRETIOSA DG | 4 | | | | | | | | |
| | | PRETIOSA T | 4 | | | | | | | | |
| | | PRETIOSA W | 5 | | | | | | | | |
| PRETIOSA R10 | G | PRETIOS. A R10 | 5 | R10 | A+B | > 0,7 | > 0,6 | > 0,4 | > 0,4 | > 0,4 | > 0,4 |
| | | PRETIOS. G R10 | 5 | | | | | | | | |
| | | PRETIOS.DG R10 | 4 | | | | | | | | |
| | | PRETIOS. T R10 | 4 | | | | | | | | |
| | | PRETIOS. W R10 | 5 | | | | | | | | |
| PRETIOSA LP | G | PRETIOSAA LP | 5 | - | - | - | - | - | - | - | - |
| | | PRETIOSA G LP | 5 | | | | | | | | |
| | | PRETIOSA DG LP | 4 | | | | | | | | |
| | | PRETIOSA T LP | 4 | | | | | | | | |
| | | PRETIOSA W LP | 5 | | | | | | | | |

La natura e la tecnologia si fondono per dar vita a un nuovo concetto di ceramica che mette al centro il rapporto tra l'uomo e l'ambiente; un binomio inscindibile per il conseguimento consapevole dei principi di eco-efficienza aziendale ed eco-compatibilità ambientale sigillato da importanti riconoscimenti.

Nature and technology combine to give birth to a new concept in ceramic tiles which places the relationship between man and the environment at the centre; an inseparable combination for the conscious achievement of eco-efficient corporate principles as well as those of environmental eco-compatibility, sealed with important recognitions.

La nature et la technologie se fondent pour donner naissance à un nouveau concept de céramique qui met au centre le rapport entre l'homme et l'environnement; un binôme indissociable pour que les principes d'éco-efficience de l'entreprise et d'éco-compatibilité environnementale une fois acquis soient reconnus par d'importants labels.

Natur und Technik verbinden sich, um ein neues Konzept der Keramik zu schaffen, in dessen Mitte die Beziehung zwischen Mensch und Umwelt steht; eine untrennbare Zweisamkeit für die bewusste Durchführung der Prinzipien der ökologischen Effizienz auf Firmenebene und der Umweltverträglichkeit, die durch wichtige Anerkennungen besiegelt sind.

La naturaleza y la tecnología se funden para dar vida a un nuevo concepto de cerámica que subraya la relación entre el hombre y el ambiente; un binomio inseparable para alcanzar los principios de eco-eficiencia empresarial y eco-compatibilidad ambiental sellado por importantes reconocimientos.

Природа и технология слились воедино для воплощения новой концепции в керамике, ставящей в центр отношение между человеком и окружающей средой; неразрывный симбиоз для сознательного достижения принципов эффективного природосбережения и экологической совместимости, скрепленных значительными признаниями.

Priroda i tehnologija se spajaju u rađanju novog koncepta keramike što se usredotočuje na odnos čovjeka i okoliša; nerazdvojna kombinacija za svjesno ostvarivanje načela ekološke učinkovitosti poduzeća i ekološke kompatibilnosti, potvrđena značajnim priznanjima.

自然与技术结合，带来全新的陶瓷理念，以人与自然的关系为中心，落实企业生态效率和环境兼容性原则，获得多项重要认证。



eco



COOPERATIVA
CERAMICA
D'IMOLA

Cooperativa Ceramica d'Imola S.c.

Via V. Veneto, 13 - 40026 Imola BO, Italia
Tel. +39 0542 601601 - Fax +39 0542 31749
info@ccimola.it - **ccimola.it**

LAFENZA
CERAMICA

lafaenzaceramica.it
info@lafaenzaceramica.it

be Italian dal 1874

