

Nami 45x45

Created on_24/12/15

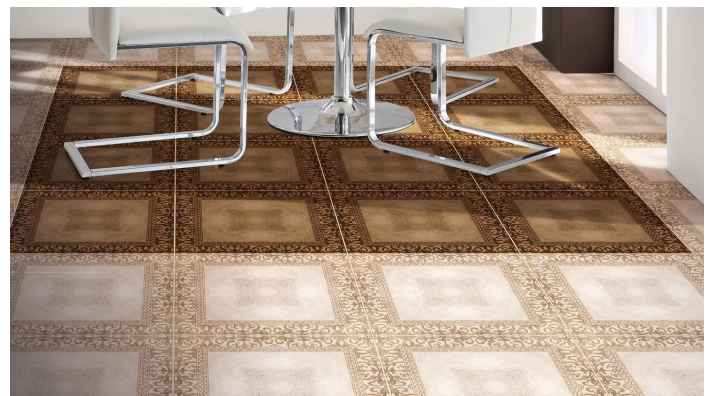


ABSOLUT KERAMIKA

www.absolutkeramika.com



Gallery



tel.: (+34) 964 657 738
fax: (+34) 964 322 151

info@absolutkeramika.com
www.absolutkeramika.com

The results shown are approximate. This document does not constitute a contractual relationship.
To order or check availability of products, contact the company.

Nami 45x45

Created on_24/12/15



ABSOLUT KERAMIKA

www.absolutkeramika.com



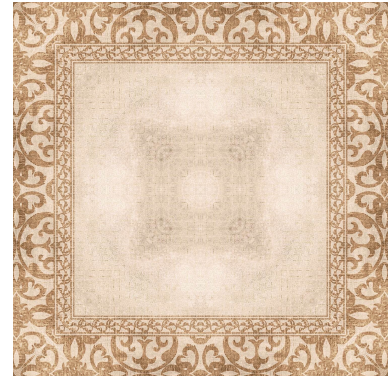
Base



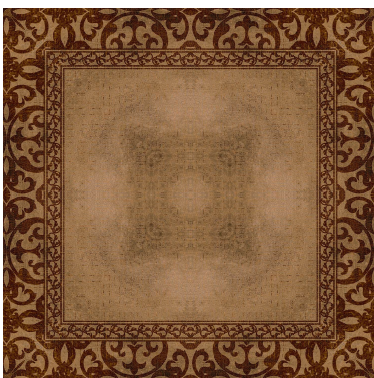
NAMI GRIS 45X45
B16



NAMI BEIGE 45X45
B16



NAMI CREMA 45X45
B16

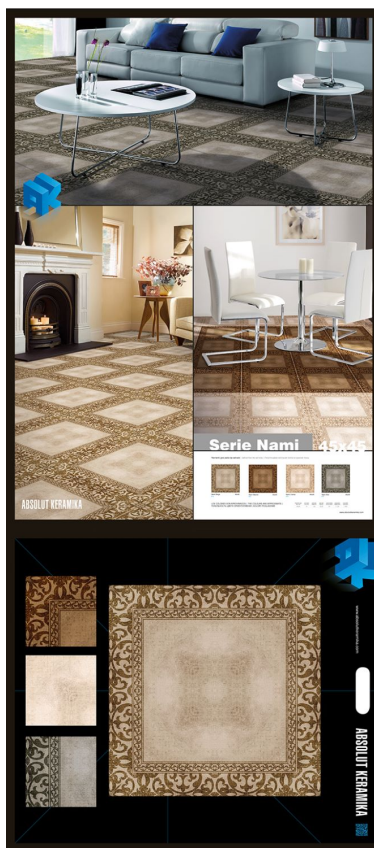


NAMI MARRON 45X45
B16

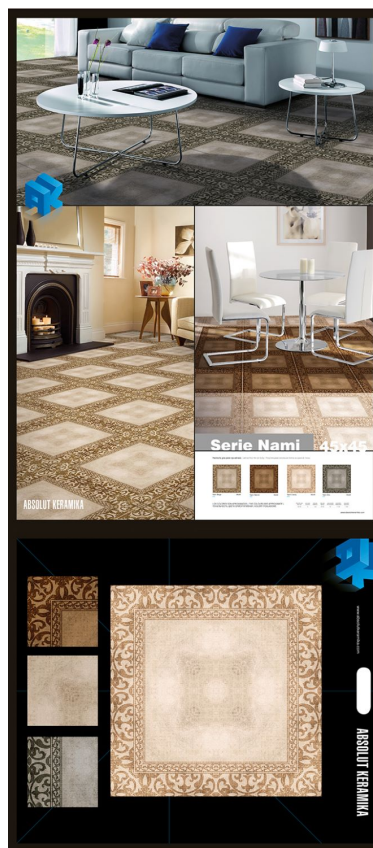
Packing

Size	Pieces/Box	m2/Box	Kg/Box	Boxes/Pallet	m2/Pallet	Kg/Pallet
45x45	8	1.62	32	44	71.28	1408

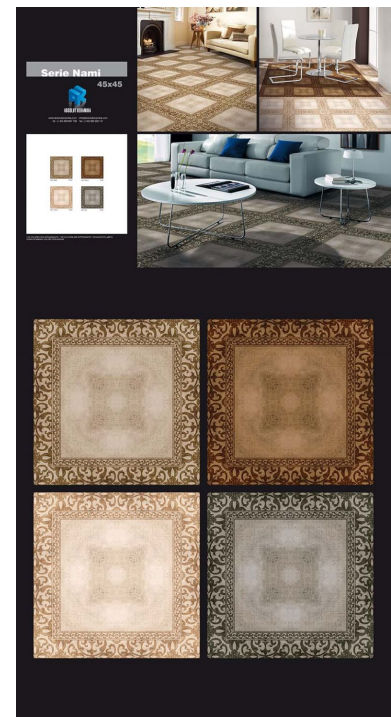
Merchandising



PE NAMI BEIG 45X45 (80X180)



PE NAMI CREMA 45X45 (80X180)



PT NAMI (45X45) 1925X1005