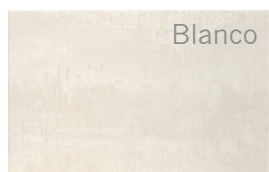




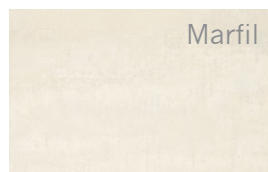
Rvto / Wall / Rvrm: LONDON Blanco 25x40 · LONDON Grafito 25x40 · Dec.Cali Grafito 25X40
Pvto / Floor / Sol: MEDICI Grafito 31,6x31,6. Pasta Roja



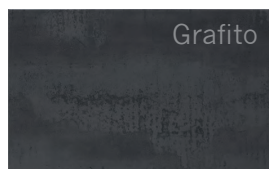
LONDON Blanco	M07	2.405.12.2054
LONDON Marfil	M07	2.405.33.2054
LONDON Grafito	M07	2.405.68.2054
LONDON Marrón	M07	2.405.9.2054



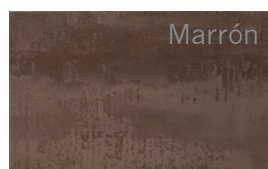
Blanco



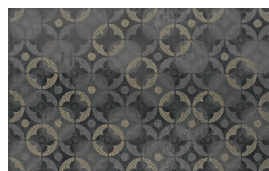
Marfil



Grafito



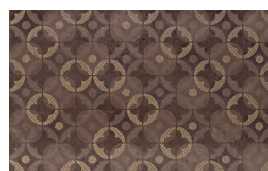
Marrón



Dec. CALI Grafito
25x40 P78
5.156.68.387



12,7



Dec. CALI Marrón
25x40 P78
5.156.9.387



12,7



Dec. LIMA Grafito
25x40 P76
5.156.68.521



12,74



Dec. LIMA Marrón
25x40 P76
5.156.9.521



12,74



List. ISLA Blanco
5x25 P21
5.152.12.86



3,90



List. ISLA Marfil
5x25 P21
5.152.33.86



3,90



List. TIBOR Plata
0,6x25 P27
5.679.31.814



0,44






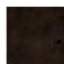
List. TIBOR Oro
0,6x25 P27
5.679.32.814



0,44

Pavimentos sugeridos.

Recommended flooring. / Revêtements de sol conseillés.

LONDON Blanco LONDON Marfil	LONDON Grafito	LONDON Marrón
 		
AVALON Marfil	MEDICI Grafito	MEDICI Marrón
MEDICI Blanco		

Empaquetado.

Packaging. / Emballage.

Formato	pz/cj	m²/cj	cj/pl	m²/pl	kg/cj	kg/pl
25x40	17	1,70	52	88,40	23,50	1248

Piezas complementarias, ver en página 354.
Special pieces, see page 354.
Pièces supplémentaires, voir page 354.