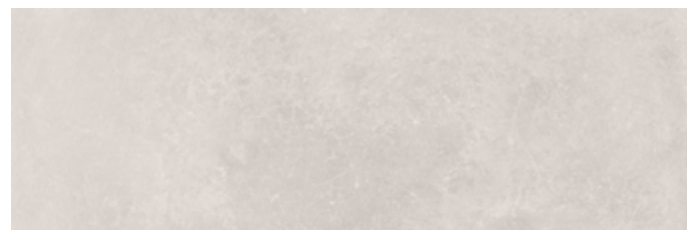


SLIM WALL TILE + WHITE BODY + RECTIFIED + MATT
AZULEJO DE ESPESOR FINO + PASTA BLANCA + RECTIFICADO + MATE

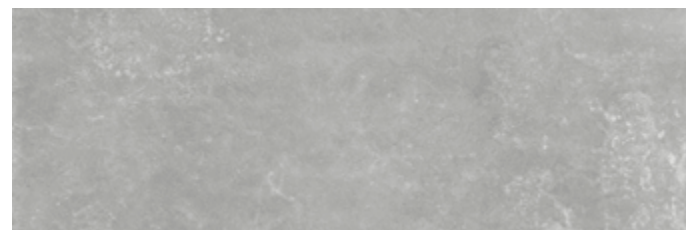
BIII **GL** **V.2**



40x120 cm/16"x48"



MATERICA LIGHT



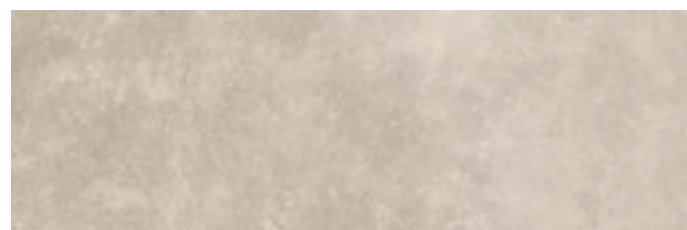
MATERICA GREY



MATERICA RAW LIGHT



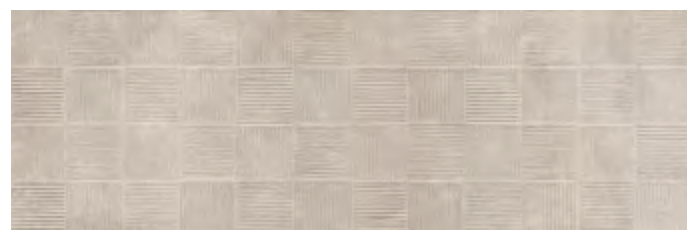
MATERICA RAW GREY



MATERICA CREAM



MATERICA DARK



MATERICA RAW CREAM



MATERICA RAW DARK



Extra Slim

This material considerably reduces environmental impact. Increases the load capacity by 20m2 extra than in a normal thickness. Este material reduce considerablemente las emisiones e impacto medioambiental. Aumenta la capacidad de carga en 20m2extra que en un espesor normal.

AVAILABLE FORMATS: / FORMATOS DISPONIBLES:

PIECES NAME NOMBRE DE LA PIEZA	SIZES FORMATOS (cm)	WORK SIZE DIMENSIÓN DE FABRICACIÓN (mm)	BOX CAJA			PALLET PALET			
			PIECES PIEZAS	sqm m ²	MAX. AVERAGE WEIGHT PESO MEDIO MÁXIMO (Kg)	BOXES CAJAS	sqm m ²	MAX. AVERAGE WEIGHT PESO MEDIO MÁXIMO (Kg)	SIZE PALLET FORMATO DEL PALET (mm)
MATERICA	40x120 XS RC	400 x 1200 x 7	5	2,400	30,000	20	48,000	630	800x1200x540
MATERICA RAW	40x120 XS RC	400 x 1200 x 8	4	1,920	28,000	20	38,400	570	800x1200x540

MATERICA GREY
40x120 cm/16"x48" XS RC
↘

CONCRETE
CEMENTOS



GLAZED PORCELAIN STONEWARE + COLOUR BODY + RECTIFIED + MATT
PORCELÁNICO ESMALTADO + PASTA COLOREADA + RECTIFICADO + MATE

Bla **GL** **V.2** **LOW** **2** **3**



120x120 cm/48"x48" + 90x90 cm/36"x36" + 75x150 cm/30"x60" + 75x75/30"x30" + 60x120 cm/24"x48" + 60x60 cm/24"x24" + 30x60 cm/11.8"x24"



GRAVEL WHITE GRAVEL CREAM GRAVEL EARTH GRAVEL GREY GRAVEL SHADOW GRAVEL BLACK