

# Matter

- Gres Szklwiony • Porcelain Stoneware • Feinsteinzeug • Gres Porcellanato • Gres Porcelánico • Керамогранит

**Natural/Matt**  
60x60 · 30x60

Rektyfikowane • Rectified Monocaliber  
• Rektifiziert Monokaliber •  
Rettificato Monocalibro • Rectificado  
Monocalibre • Ректифицированный  
Монокалиберный



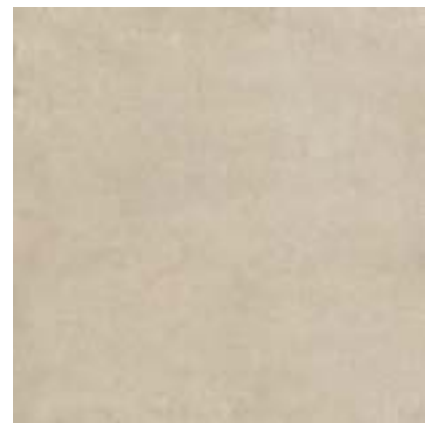
Zgodne z • According to • Gemäß •  
Conforme • Conforme • Соответствует  
**UNI EN 14411 - G Bla**



White G



Grey G



Beige G



Black G



M152  
Matter White Mosaic 30x60 (2)



M153  
Matter Beige Mosaic 30x60 (2)



M155  
Matter Grey Mosaic 30x60 (2)



M154  
Matter Black Mosaic 30x60 (2)





**Formaty** • Sizes • Formate • Formati • Formatos • Форматы



**60x60**  
MOXH Matter White Rett.  
MOXJ Matter Beige Rett.  
MOXK Matter Grey Rett.  
MOXL Matter Black Rett.



**30x60**  
MOXM Matter White Rett.  
MOXN Matter Beige Rett.  
MOXQ Matter Grey Rett.  
MOXP Matter Black Rett.

Elementy dedykowane Special Trims Formteile Pezzi Speciali Piezas Especiales Специальные Изделия	 <b>L TILE</b> 15x60x4		 <b>SKIRTING</b> 7x60 (6)		 <b>Karton</b> Pieces Stck Pezzi Piezas Штуки	<b>M2</b> Sq. Mt Qm Mq Кв. м	<b>Kg</b> Kf	 <b>Paleta</b> Box Karton Scatole Caja Коробки	<b>M2</b> Sq. Mt Qm Mq Кв. м	<b>Kg</b> Kf	<b>Grubość</b> Thickness Stärke Spessore Espesor Толщина
Matter White	M9L5	M9LP	60x60 Rett.	3	1,08	21,99	40	43,20	979,78	9,5	
Matter Beige	M9L9	M9LT	30x60 Rett.	6	1,08	21,94	40	43,20	877,69	9,5	
Matter Grey	M9L7	M9LR	30x60 Mosaic	4	0,72	18,70	27	19,44	504,90	9,5	
Matter Black	M9LC	M9LV	15x60x4 L Tile	4	0,36	6,12	-	-	-	-	
			7x60 Skirting	15	9 ml	15	-	-	-	9,5	



MOXJ Matter Beige Rett. 60x60