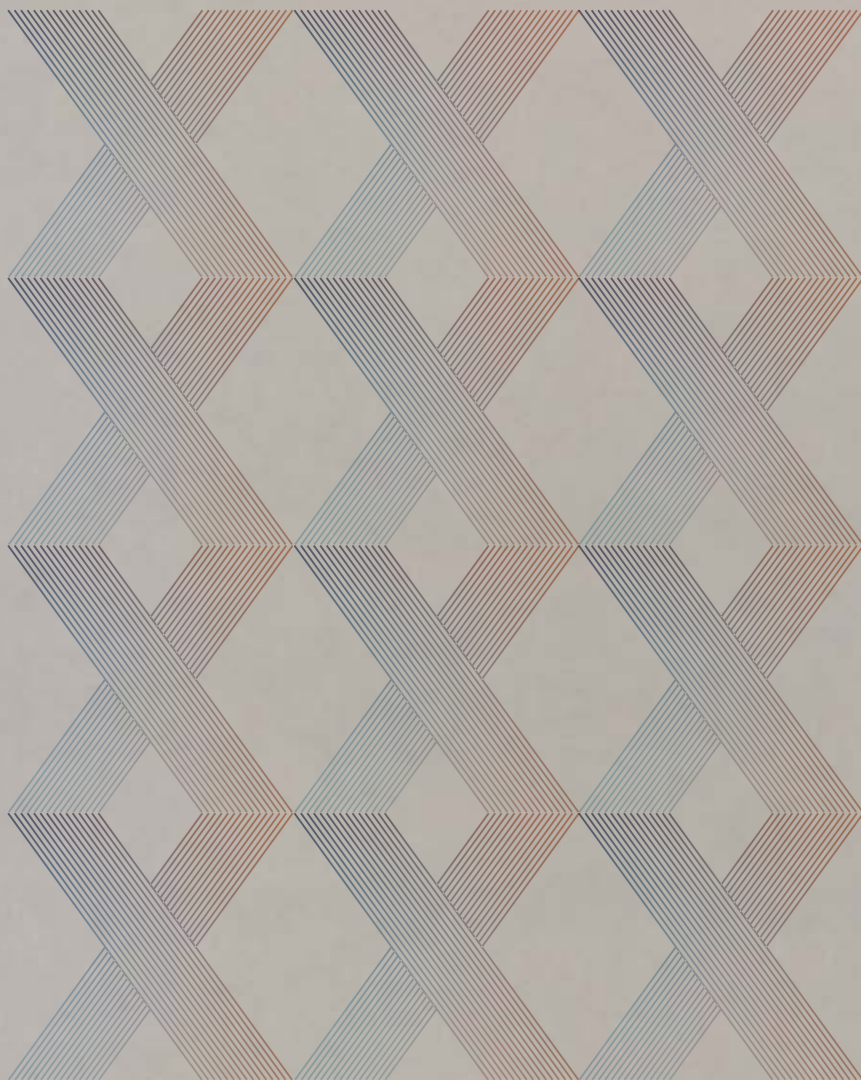


# MAXI

WALL FLOOR & DESIGN





# MAXI

GRANDI LASTRE MODULARI PER PAVIMENTI,  
RIVESTIMENTI E DESIGN.

LARGE MODULAR SLABS FOR FLOORS,  
WALLS AND DESIGN SOLUTIONS.

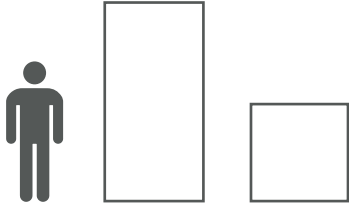
GRANDES LAMES MODULAIRES POUR  
REVELEMENTS DES SOLS, MURS E DESIGN.

GROSSFORMATIGE MODULARE PLATTEN FÜR  
BODEN, WAND UND DESIGN.



# MAXI

 6 mm - 1/4"



**120x240**    **120x120**  
48"x96"    48"x48"

MASSIMA RESA ESTETICA.  
LE LASTRE DONANO  
CONTINUITÀ A PAVIMENTO  
E RIVESTIMENTO  
RIDUCENDO LE FUGHE.  
MASSIMA VERSATILITÀ  
DI UTILIZZO NEL GRANDE  
FORMATO.

MAXIMUM STYLE.  
THE SLABS BRING  
CONTINUITY TO THE  
FLOORS AND WALLS,  
REDUCING JOINTS.  
MAXIMUM VERSATILITY,  
TO THE BIG FORMATS.

ESTHETIQUE EXCELLENTE.  
LES GRANDES LAMES  
DONNENT UNE CONTINUITE  
AU REVETEMENT DE SOL  
ET MUR EN REDUISSANT  
LES JOINTS. GRANDES  
VERSATILITE D'UTILISATION  
DANS LE GRAND FORMAT.

DIE GROSSFORMATIGEN PLATTEN  
LEISTEN EINE HÖCHSTE  
ÄSTHETISCHE ERGEBNIS, GEBEN  
KONTINUITÄT ALS BODEN- UND  
WUNDFLÄCHE, INDEM DER  
FUGENANTEIL VERRINGERT WIRD.  
BESTE FLEXIBILITÄT IN DER  
ANWENDUNG, IM GROSSFORMAT.

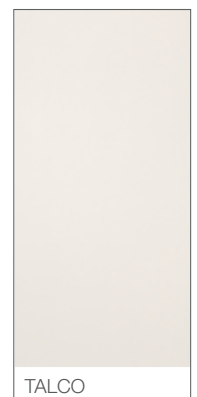
## CARRIERE DU KRONOS



## PRIMA MATERIA



## TALCO



\ PAVIMENTI E RIVESTIMENTI

\ RIVESTIMENTI FACCIATE

\ CUCINE E BAGNI

\ ARREDO INDOOR E OUTDOOR

\ HOTEL E WELLNESS

\ SPAZI COMMERCIALI

\ ARREDO URBANO

\ PORTE

\ FLOOR AND WALL COVERINGS

\ FACADES

\ KITCHENS AND BATHROOMS

\ INDOOR AND OUTDOOR FURNISHINGS

\ HOTEL AND WELLNESS

\ COMMERCIAL SETTINGS

\ URBAN FURNISHINGS

\ DOORS

\ REVETEMENT DE SOL ET MUR

\ FACADES EXTERIEURES

\ CUISINES ET SALLES DES BAINS

\ UTILISATION EN INTERIEUR ET EXTERIEUR

\ HOTELS ET WELLNESS

\ ESPACES COMMERCIAUX

\ PORTES

\ WAND UND BODENBELÄGE

\ FASSADENVERKLEIDUNG

\ GESTALTUNG IN KÜCHEN- UND BÄDERBEREICH

\ AUSSTATTUNG IM INNEN- UND AUSSENBEREICH

\ HOTEL UND WELLNESS

\ EINSATZ IN GEWERBLICHEN UND ÖFFENTLICHEN OBJEKTE

\ STÄDTISCHE EINRICHTUNGEN

\ TÜRVERKLEIDUNG





---

floor: 120x240 - 48"x96" Carriere du Kronos Bruges Lapp. Rett.  
wall: 120x240 - 48"x96" Carriere du Kronos Bruges Rett.  
stair & landing: 120x240 - 48"x96" Carriere du Kronos Bruges Rett.





\10

---

floor: 120x240- 48"x96" Carriere du Kronos Bruges Lapp. Rett.  
wall: 120x240 - 48"x96" Carriere du Kronos Bruges Rett.  
stair & landing: 120x240 - 48"x96" Carriere du Kronos Bruges Rett.







\12

---

floor: 120x120 - 48"x48" Prima Materia Cenere Rett.  
wall: 120x240 - 48"x96" Prima Materia Cenere Rett.  
reception desk: Carriere du Kronos Namur Rett.  
volume: Carriere du Kronos Namur - Namur Lignes Rett.  
banck: Carriere du Kronos Namur - Namur Lignes Rett.





floor: 120x120 - 48"x48" Prima Materia Genere Rett.  
wall: 120x240 - 48"x96" Prima Materia Genere Rett.  
reception desk: Carriere du Kronos Namur Rett.  
volume: Carriere du Kronos Namur - Namur Lignes Rett.  
banch: Carriere du Kronos Namur - Namur Lignes Rett.





\16

---

volume: Carriere du Kronos Namur - Namur Lignes Rett.  
banch: Carriere du Kronos Namur - Namur Lignes Rett.





\18

---

floor: 120x120- 48"x48" Carriere du Kronos Gent rett.  
wall: 120x240 - 48"x96" Carriere du Kronos Gent - Mosaico Exa Gent Rett.  
washbasin: Gent Rett.  
shelf: Gent Rett.







wall: 120x240 - 48"x96" Carriere du Krónos Gent - Mosaico Exa Gent Rett.  
washbasin: Gent Rett.



Aesop.

MOUTHWASH  
BAIN DE BOUCHE

ECLECTIC  
BY  
YONI  
DEROCH

ECLECTIC  
BY  
YONI  
DEROCH



\22

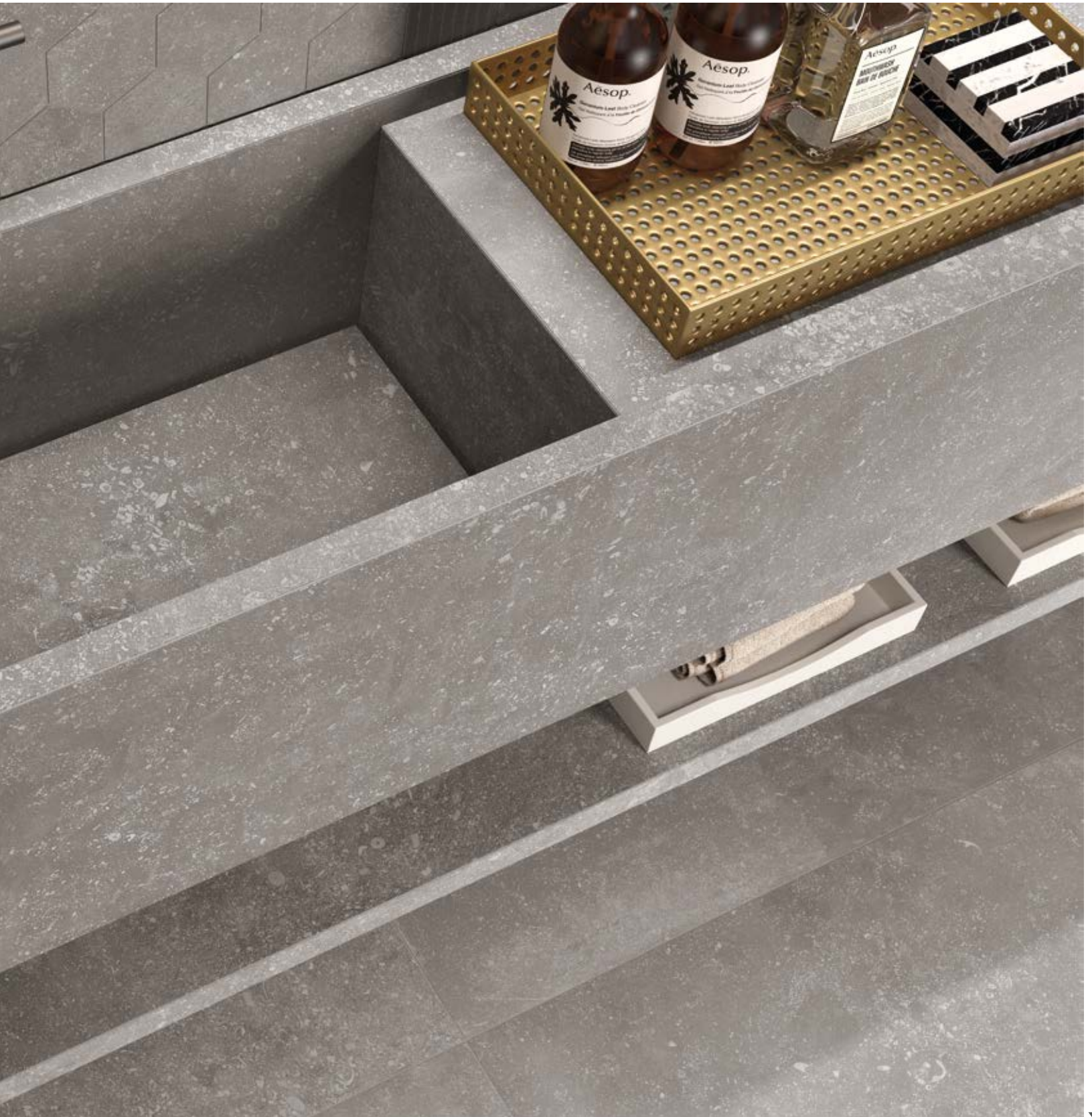
---

floor: 120x120 - 48"x48" Carriere du Kronos Gent Rett.

wall: 120x240 - 48"x96" Carriere du Kronos Gent - Mosaico Exa Gent Rett.

washbasin: Gent Rett.

shelf: Gent Rett.





\24

---

floor: 120x120- 48"x48" Carriere du Kronos Gent Rett.  
wall: 120x240 - 48"x96" Carriere du Kronos Gent Rett.





---

floor: 120x120 - 48"x48" Prima Materia Cemento Rett.  
shutter: Talco Rett.  
top: Talco Rett.







\28

---

floor: 120x120 - 48"x48"  
Prima Materia Cemento Rett.  
shutter: Talco Rett.  
top/banch: Talco Rett.





\ 30

---

floor: 120x120 - 48"x48" Prima Materia Cemento Rett.  
wall: 120x240 - 48"x96" Talco Rett.



---

floor: 120x120 - 48"x48" Prima Materia Cemento Rett.  
wall: 120x240 - 48"x96" Talco Rett.





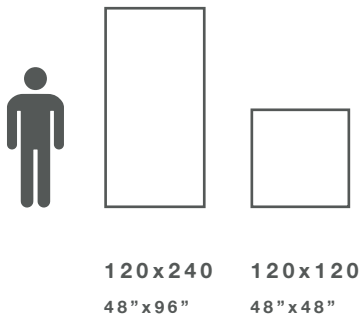






# MAXI

 6 mm - 1/4"



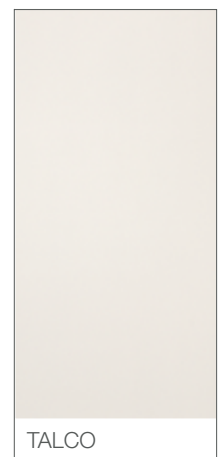
## CARRIERE DU KRONOS

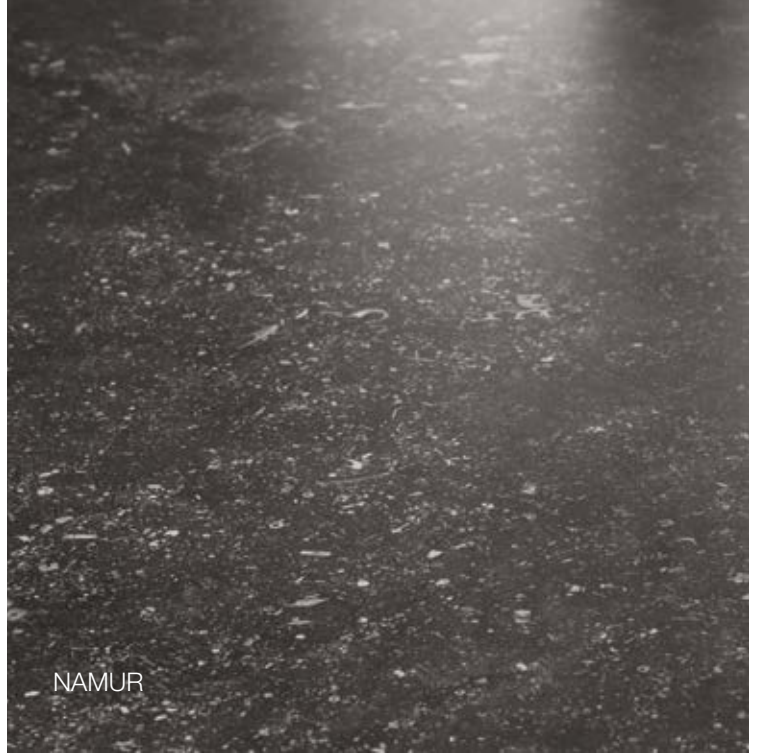


## PRIMA MATERIA



## TALCO





**CARRIERE DU KRONOS**



120x240 - 48"x96" NAMUR  
8452 rett. ■ K0785  
8454 lapp. rett. ■ K0818



120x120 - 48"x48" NAMUR  
8456 rett. ■ K0745  
8458 lapp. rett. ■ K0785



## CARRIERE DU KRONOS

\ 38



120x240 - 48"x96" GENT

8453 rett. ■ K0785  
8455 lapp. rett. ■ K0818



120x120 - 48"x48" GENT

8457 rett. ■ K0745  
8459 lapp. rett. ■ K0785



**CARRIERE DU KRONOS**



120x240 - 48"x96" BRUGES  
8462 rett. ■ K0785  
8463 lapp. rett. ■ K0818



120x120 - 48"x48" BRUGES  
8464 rett. ■ K0745  
8465 lapp. rett. ■ K0785

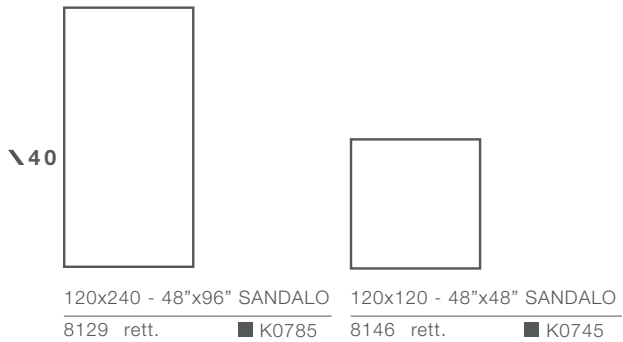


SANDALO

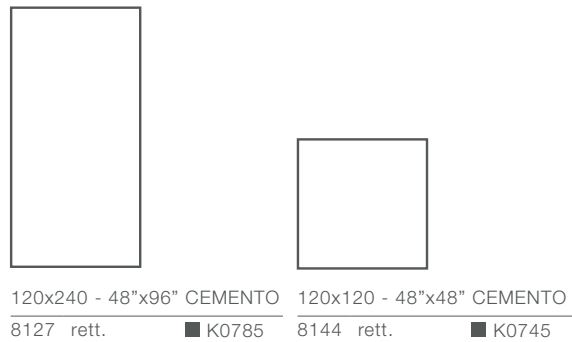


CEMENTO

**PRIMA MATERIA**



**PRIMA MATERIA**





CENERE



TALCO

**PRIMA MATERIA**



120x240 - 48"x96" CENERE  
8128 rett. ■ K0785



120x120 - 48"x48" CENERE  
8145 rett. ■ K0745

**PRIMA MATERIA**



120x240 - 48"x96" TALCO  
4273 rett. ■ K0785



120x120 - 48"x48" TALCO  
4274 rett. ■ K0745

# MAXI

## IMBALLI\_PACKAGING\_EMBALLAGES\_VERPACKUNGEN

MAXI	Thickness	Pezzi per scatola	M <sup>2</sup> per scatola	Kg per scatola	Scatole per pallet	M <sup>2</sup> per pallet	KG per pallet
120x240 - 48"x96"	6 - 1/4"	1	2,88	40,00	20	57,60	820
120x120 - 48"x48"	6 - 1/4"	2	2,88	42,00	24	69,12	1.028

## VARIAZIONE CROMATICA\_SHADE VARIATION\_VARIATION CHROMATIQUE\_CHROMATISCHE ABWEICHUNG


 <b>V1</b> aspetto uniforme - uniform appearance aspect uniforme - Gleichmäßiges Bild	 <b>V2</b> lieve variazione - slight variation légère différence de nuance - Leichte Abweichung	 <b>V3</b> moderata variazione - moderate variation variation modérée - Mäßige Abweichung	 <b>V4</b> forte variazione - substantial variation variation intense - Stärke Abweichung
---	--	--	--

TALCO

PRIMA MATERIA

CARRIERE DU KRONOS



<b>CARATTERISTICHE E PROPRIETÀ</b> CHARACTERISTICS OR PROPERTIES CARACTERISTIQUES OU PROPRIETES EIGENSCHAFTEN UND GÜTEMERKMALE	<b>NORME</b> STANDARDS NORMES NORMEN	<b>SECONDO LE NORME</b> COMPLIANCE WITH STANDARDS CONFORME AUX NORMES ENTSPRECHEND DEN NORMEN UNI EN 14411 G																																								
<b>QUALITÀ DELLA SUPERFICIE</b> - SURFACE QUALITY - QUALITE DE LA SURFACE - OBERFLAECHEQUALITAET	ISO <b>10545-2</b>	<b>IL 95% MIN DELLE PISTRELLE DEVE ESSERE ESENTI DA DIFETTI VISIBILI</b> / AT LEAST 95% OF THE TILES MUST BE FREE FROM VISIBLE FLAWS / 95% MIN DES CARREUX NE DOIVENT PRESENTER AUCUN DEFOUT VISIBLE / MINDESTENS 95% DER FLIESEN MÜSSEN FREI VON SICHTBAREN	CONFORME ALLE NORME - COMPLIES WITH STANDARD - CONFORME AUX NORMES - NORMGERECHT																																							
		<table border="1"> <tr> <td data-bbox="861 463 968 555">N ≥ 15cm %</td> <td data-bbox="968 463 1090 555">N ≥ 15cm</td> <td data-bbox="1090 463 1203 555">RISULTATI TEST TEST RESULTS RESULTSTES DES ESSAIS PRÜFERGEBNIS</td> </tr> </table>	N ≥ 15cm %	N ≥ 15cm	RISULTATI TEST TEST RESULTS RESULTSTES DES ESSAIS PRÜFERGEBNIS	CONFORME ALLE NORME COMPLIES WITH STANDARD CONFORME AUX NORMES - NORMGERECHT																																				
N ≥ 15cm %	N ≥ 15cm	RISULTATI TEST TEST RESULTS RESULTSTES DES ESSAIS PRÜFERGEBNIS																																								
<b>DEVIAZIONE MASSIMA DI RETTILINEITÀ IN %</b> - MAXIMUM STRAIGHTNESS DEVIATION IN % - MARGE DE TOLERANCE DE RECTITUDE EN % - ZULAESSIGE HOECHSTABWEICHUNG DER KANTENGERADHEIT IN PROZENTEN		<table border="1"> <tr> <td data-bbox="861 555 968 625">± 0,5 %</td> <td data-bbox="968 555 1090 625">± 1,5 mm</td> <td data-bbox="1090 555 1203 625">± 0,10%</td> </tr> </table>	± 0,5 %	± 1,5 mm	± 0,10%	CONFORME ALLE NORME COMPLIES WITH STANDARD CONFORME AUX NORMES - NORMGERECHT																																				
± 0,5 %	± 1,5 mm	± 0,10%																																								
<b>DEVIAZIONE AMMISSIBILE IN %, DELLO SPESSORE MEDIO DI OGNI PIASTRELLA DALLA DIMENSIONE DI FABBRICAZIONE</b> - ADMITTED DEVIATION, IN %, OF THE AVERAGE THICKNESS OF EACH TILE FROM THE PRODUCTION DIMENSIONS - MARGE DE TOLERANCE, EN POURCENTAGE, ENTRE L'EPASSEUR MOYENNE DE CHAQUE CARREAU ET LA DIMENSION DE FABRICATION - ZULÄSSIGE ABWEICHUNG DER DURCHSCHNITTSDICKE JEDER FLIESE VOM HERSTELLMASS IN PROZENTEN		<table border="1"> <tr> <td data-bbox="861 625 968 772">± 0,5 %</td> <td data-bbox="968 625 1090 772">± 0,5 mm</td> <td data-bbox="1090 625 1203 772">± 5%</td> </tr> </table>	± 0,5 %	± 0,5 mm	± 5%	CONFORME ALLE NORME COMPLIES WITH STANDARD CONFORME AUX NORMES - NORMGERECHT																																				
± 0,5 %	± 0,5 mm	± 5%																																								
<b>DEVIAZIONE MASSIMA DI ORTOGONALITÀ IN %</b> - MAXIMUM RIGHT-ANGLE DEVIATION IN % - MARGE DE TOLERANCE D'ANGULARITE IN % - HOECHSTABWEICHUNG DER RECHTWINKLIGKEIT IN PROZENTEN		<table border="1"> <tr> <td data-bbox="861 772 968 846">± 0,5 %</td> <td data-bbox="968 772 1090 846">± 2,0 mm</td> <td data-bbox="1090 772 1203 846">± 0,20%</td> </tr> </table>	± 0,5 %	± 2,0 mm	± 0,20%	CONFORME ALLE NORME COMPLIES WITH STANDARD CONFORME AUX NORMES - NORMGERECHT																																				
± 0,5 %	± 2,0 mm	± 0,20%																																								
<b>PLANARITÀ</b> - FLATNESS - PLANEITE - EBENFLAECHEIGKEIT		<table border="1"> <tr> <td data-bbox="861 846 968 906">± 0,5 %</td> <td data-bbox="968 846 1090 906">± 2,0 mm</td> <td data-bbox="1090 846 1203 906">± 0,2%</td> </tr> </table>	± 0,5 %	± 2,0 mm	± 0,2%	CONFORME ALLE NORME COMPLIES WITH STANDARD CONFORME AUX NORMES - NORMGERECHT																																				
± 0,5 %	± 2,0 mm	± 0,2%																																								
<b>LUNGHEZZA E LARGHEZZA</b> - LENGTH AND WIDTH LONGUEUR ET LARGEUR - LÄNGE UND BREITE		<table border="1"> <tr> <td data-bbox="861 906 968 963">± 0,6 %</td> <td data-bbox="968 906 1090 963">± 2,0 mm</td> <td data-bbox="1090 906 1203 963">± 0,15%</td> </tr> </table>	± 0,6 %	± 2,0 mm	± 0,15%	CONFORME ALLE NORME COMPLIES WITH STANDARD CONFORME AUX NORMES - NORMGERECHT																																				
± 0,6 %	± 2,0 mm	± 0,15%																																								
<b>ASSORBIMENTO D'ACQUA</b> - WATER ABSORPTION ABSORPTION D'EAU - WASSERAUFNAHME	ISO <b>10545-3</b>	≤ 0,5 %	E < = 0,1%																																							
<b>FORZA DI ROTTURA IN N (sp. &lt; 7,5 mm)</b> - BREAKING STRENGTH IN N (sp. < 7,5 mm) FOCE DE RUPTURE EN N (ép. < 7,5 mm) - BRUCHLAST IN N (Dicke < 7,5 mm)	ISO <b>10545-4</b>	R ≥ 700	≥ 1300																																							
<b>RESISTENZA ALLA FLESSIONE</b> - BENDING STRENGTH RESISTANCE À LA FLEXION - BIEGEZUGFESTIGKEIT	ISO <b>10545-4</b>	35 MIN.	≥ 50 N/ mm <sup>2</sup>																																							
<b>RESISTENZA ALL'ABRASIONE PROFONDA</b> - RESISTANCE TO DEEP ABRASION RESISTANCE A L'ABRASION PROFONDE - WINDERSTANDSFAKKGKEIT GEGEN TIEFENABRIEB	ISO <b>10545-6</b>	≤175 mm <sup>3</sup>	<150 mm <sup>3</sup>																																							
<b>RESISTENZA AGLI SBALZI TERMICI</b> - THERMAL SHOCK RESISTANCE RESISTANCE AUX ECARTS THERMIQUES - TEMPERATURWECHSELBESTÄNDIGKEIT	ISO <b>10545-9</b>	TEST SUPERATO SECONDO EN ISO 10545-1 - PASS ACCORDING EN ISO 10545-1 - TEST OBTENUS SELON EN ISO 10545-1 - TEST LAUT EN ISO 10545-1 BESTANDEN	NESSUN DANNO - NO DAMAGE - AUCUN DOMMAGE - KEIN SCHADEN																																							
<b>RESISTENZA AL GELO</b> - FROST RESISTANCE RESISTANCE AU GEL - FROSTBESTÄNDIGKEIT	ISO <b>10545-12</b>	TEST SUPERATO SECONDO EN ISO 10545-1 - PASS ACCORDING EN ISO 10545-1 - TEST OBTENUS SELON EN ISO 10545-1 - TEST LAUT EN ISO 10545-1 BESTANDEN	NESSUN DANNO - NO DAMAGE - AUCUN DOMMAGE - KEIN SCHADEN																																							
<b>RESISTENZA AGLI AGENTI CHIMICI</b> - CHEMICAL RESISTANCE RESISTANCE A L'ATTAQUE CHIMIQUE - BASTÄNDIGKEIT GEGEN CHEMIKALIEN	ISO <b>10545-13</b>	UB MIN.	UA ULA UHA																																							
<b>RESISTENZA ALLE MACCHIE</b> - RESISTANCE TO STAIN RESISTANCE AUX TACHES - FLECKENFESTIGKEIT	ISO <b>10545-14</b>	VALORE DICHIARATO - DECLARED VALUE - VALEUR DECLAREE - ANGEGBENER WERT	Classe 4																																							
<b>RESISTENZA AL FUOCO</b> - FIRE RESISTANCE RESISTANCE AU FEU - FEUERWIDERSTAND	EN <b>13501 - 1</b>	VALORE DICHIARATO - DECLARED VALUE - VALEUR DECLAREE - ANGEGBENER WERT	CLASSE A1 - A1 FL																																							
<b>RESISTENZA ALLO SCIVOLAMENTO</b> - SLIP RESISTANCE RESISTANCE AU GLISSEMENT - BESTIMMUNG DER RUSTCHEMMENDE EIGENSCHAFT	<table border="1"> <tr> <td data-bbox="696 1517 861 1602"> <b>B.C.R. C.A.</b>  <b>B.C.R. G.B</b>  <b>D. M. 236 DEL 4.6 1989</b> </td> <td data-bbox="861 1517 1203 1602">           &gt; 0,40         </td> <td data-bbox="1203 1517 1315 1602">           CARRIERE DU KRONOS NAT.         </td> <td data-bbox="1315 1517 1428 1602">           CARRIERE DU KRONOS LAPP.         </td> <td data-bbox="1428 1517 1541 1602">           PRIMA MATERIA         </td> <td data-bbox="1541 1517 1661 1602">           TALCO         </td> </tr> <tr> <td data-bbox="696 1602 861 1655"> <b>ASTM C 1028/07 BOT 3000</b> </td> <td data-bbox="861 1602 1203 1655">           Dry SCOF &gt; 0,60         </td> <td data-bbox="1203 1602 1315 1655">           CONF         </td> <td data-bbox="1315 1602 1428 1655">           CONF         </td> <td data-bbox="1428 1602 1541 1655">           CONF         </td> <td data-bbox="1541 1602 1661 1655">           CONF         </td> </tr> <tr> <td data-bbox="696 1655 861 1708"> <b>ASTM C 1028/07 BOT 3000</b> </td> <td data-bbox="861 1655 1203 1708">           Wet SCOF &gt; 0,60         </td> <td data-bbox="1203 1655 1315 1708">           CONF         </td> <td data-bbox="1315 1655 1428 1708">           CONF         </td> <td data-bbox="1428 1655 1541 1708">           CONF         </td> <td data-bbox="1541 1655 1661 1708">           CONF         </td> </tr> <tr> <td data-bbox="696 1708 861 1761"> <b>ANSI A137.1 BOT 3000</b> </td> <td data-bbox="861 1708 1203 1761">           Wet DCOF &gt; 0,42         </td> <td data-bbox="1203 1708 1315 1761">           CONF         </td> <td data-bbox="1315 1708 1428 1761">           CONF         </td> <td data-bbox="1428 1708 1541 1761">           CONF         </td> <td data-bbox="1541 1708 1661 1761">           CONF         </td> </tr> <tr> <td data-bbox="696 1761 861 1793"> <b>DIN 51130</b> </td> <td data-bbox="861 1761 1203 1793">           -         </td> <td data-bbox="1203 1761 1315 1793">           R9         </td> <td data-bbox="1315 1761 1428 1793">           N.C.         </td> <td data-bbox="1428 1761 1541 1793">           R9         </td> <td data-bbox="1541 1761 1661 1793">           N.C.         </td> </tr> <tr> <td data-bbox="696 1793 861 1836"> <b>DIN 51097</b> </td> <td data-bbox="861 1793 1203 1836">           -         </td> <td data-bbox="1203 1793 1315 1836">           CL. A         </td> <td data-bbox="1315 1793 1428 1836">           -         </td> <td data-bbox="1428 1793 1541 1836">           -         </td> <td data-bbox="1541 1793 1661 1836">           -         </td> </tr> </table>	<b>B.C.R. C.A.</b> <b>B.C.R. G.B</b> <b>D. M. 236 DEL 4.6 1989</b>	> 0,40	CARRIERE DU KRONOS NAT.	CARRIERE DU KRONOS LAPP.	PRIMA MATERIA	TALCO	<b>ASTM C 1028/07 BOT 3000</b>	Dry SCOF > 0,60	CONF	CONF	CONF	CONF	<b>ASTM C 1028/07 BOT 3000</b>	Wet SCOF > 0,60	CONF	CONF	CONF	CONF	<b>ANSI A137.1 BOT 3000</b>	Wet DCOF > 0,42	CONF	CONF	CONF	CONF	<b>DIN 51130</b>	-	R9	N.C.	R9	N.C.	<b>DIN 51097</b>	-	CL. A	-	-	-					
<b>B.C.R. C.A.</b> <b>B.C.R. G.B</b> <b>D. M. 236 DEL 4.6 1989</b>	> 0,40	CARRIERE DU KRONOS NAT.	CARRIERE DU KRONOS LAPP.	PRIMA MATERIA	TALCO																																					
<b>ASTM C 1028/07 BOT 3000</b>	Dry SCOF > 0,60	CONF	CONF	CONF	CONF																																					
<b>ASTM C 1028/07 BOT 3000</b>	Wet SCOF > 0,60	CONF	CONF	CONF	CONF																																					
<b>ANSI A137.1 BOT 3000</b>	Wet DCOF > 0,42	CONF	CONF	CONF	CONF																																					
<b>DIN 51130</b>	-	R9	N.C.	R9	N.C.																																					
<b>DIN 51097</b>	-	CL. A	-	-	-																																					
<b>STABILITÀ DEI COLORI ALLA LUCE E AI RAGGI U.V.</b> COLOUR STABILITY ON EXPOSURE TO LIGHT AND UV RAYS STABILITE DES COULEURS A LA LUMIERE ET AUX RAYONS U.V. FARBECHTHEIT UNTER LICHTEINLUSS UND UV-STRAHLUNG	DIN <b>51094</b>	VALORE DICHIARATO - DECLARED VALUE - VALEUR DECLAREE - ANGEGBENER WERT	CONFORME ALLE NORME, NO VARIAZIONI COMPLIES WITH STANDARD, NO VARIATION CONFORME AUX NORMES, PAS DE CHANGEMENTS NORMGERECHT, KEINE AENDERUNG																																							

MAXI







**Kronos 2 ceramiche S.p.A.**

Sede legale: Strada delle Fornaci, 20 41126 Modena

Sede amministrativa: Via Monte Bianco, 3 41042 Fiorano Modenese (Modena) Italy

Tel. 0039 0536 927711 - Fax 0039 0536 845608 - Fax Estero 0039 0536 1815811

info@kronos2.it - www.kronosceramiche.it

