



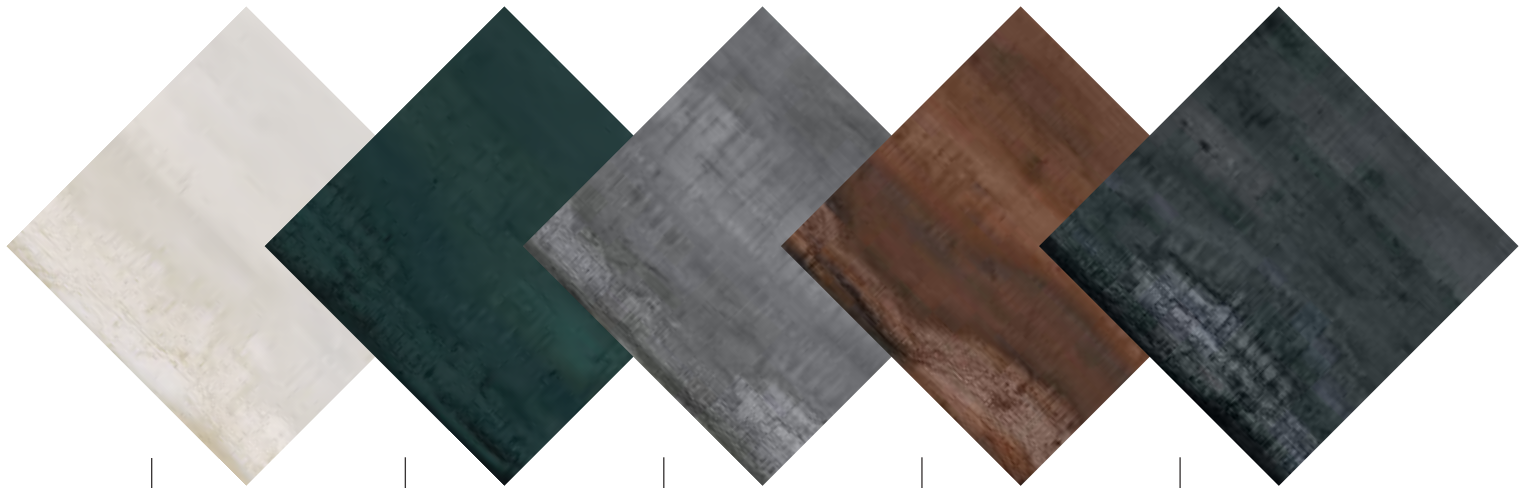
MET ARCH

gres porcellanato colorato in massa (digitale)

porcelain tiles with coloured body (digital) . grès cérame teinte dans la masse (digital)

Eingefärbtes Feinsteinzeug (digital) . gres porcelánico coloreado en masa (digital)

цветной керамогранит, прокрашенный по всей массе (струйный)



LIGHT SILVER

OXIDE

STEEL

COPPER

DARK

LIGHT SILVER



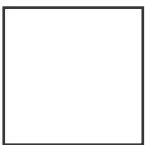
60,4x121
24"x48"

LIGHT SILVER ret | 2 pz **802**



30x121
12"x48"

LIGHT SILVER ret | 4 pz **803**



60,4x60,4
24"x24"

LIGHT SILVER | 4 pz **710**

LIGHT SILVER tech | 4 pz - R10 **730**

LIGHT SILVER ret 60x60 | 4 pz **745**



30x60,4
12"x24"

LIGHT SILVER | 8 pz **690**

LIGHT SILVER tech | 8 pz - R10 **693**

LIGHT SILVER ret 30x60 | 8 pz **730**



OXIDE



60,4x121
24"x48"

OXIDE ret | 2 pz **802**



30x121
12"x48"

OXIDE ret | 4 pz **803**

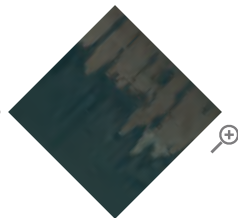


60,4x60,4
24"x24"

OXIDE | 4 pz **710**

OXIDE tech | 4 pz - R10 **730**

OXIDE ret 60x60 | 4 pz **745**

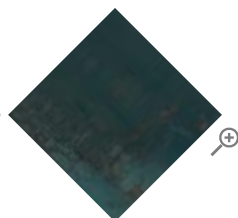


30x60,4
12"x24"

OXIDE | 8 pz **690**

OXIDE tech | 8 pz - R10 **693**

OXIDE ret 30x60 | 8 pz **730**



STEEL



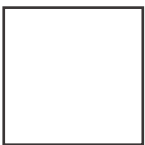
60,4x121
 24"x48"

STEEL ret | 2 pz **802**



30x121
 12"x48"

STEEL ret | 4 pz **803**

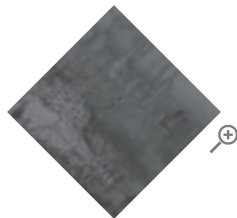


60,4x60,4
 24"x24"

STEEL | 4 pz **710**

STEEL tech | 4 pz - R10 **730**

STEEL ret 60x60 | 4 pz **745**

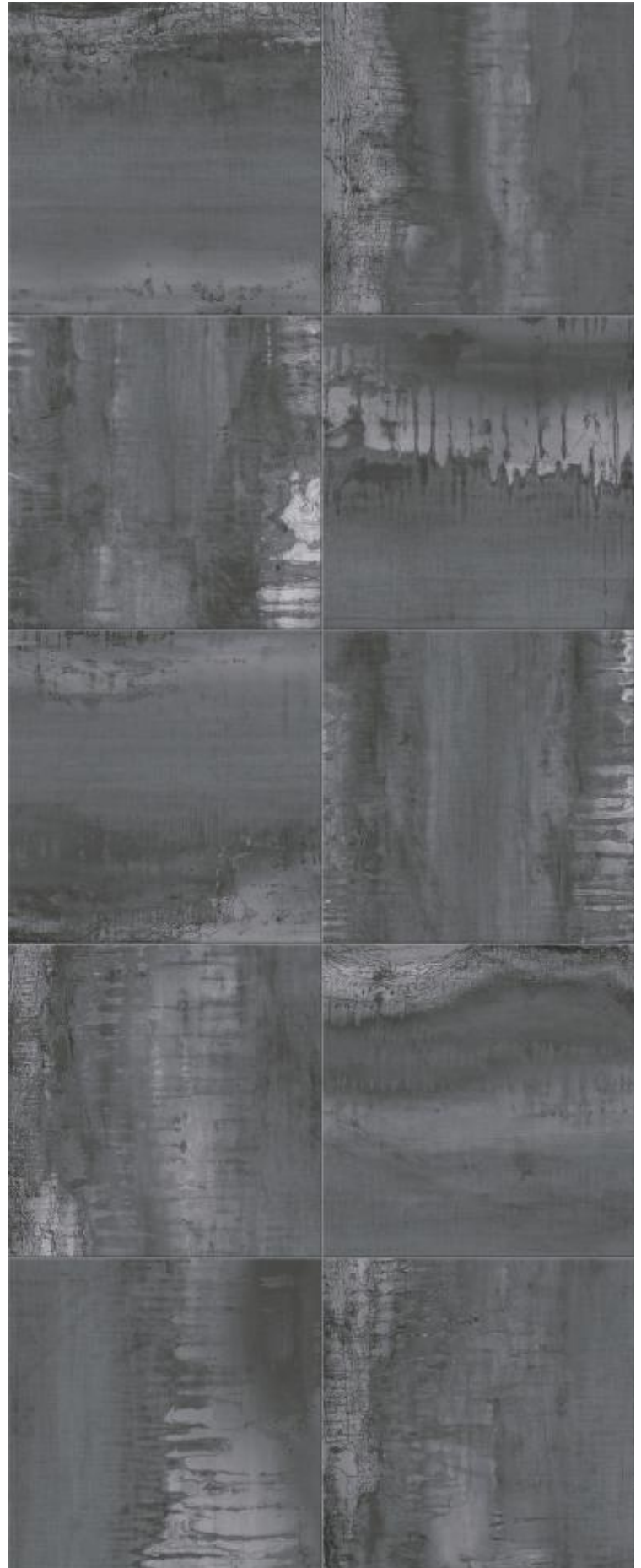
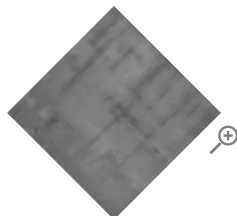


30x60,4
 12"x24"

STEEL | 8 pz **690**

STEEL tech | 8 pz - R10 **693**

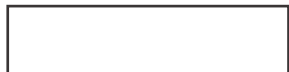
STEEL ret 30x60 | 8 pz **730**



COPPER



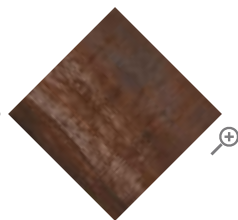
60,4x121
24"x48"
COPPER ret | 2 pz **802**



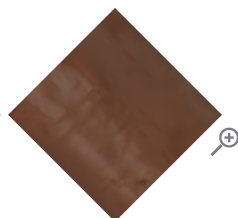
30x121
12"x48"
COPPER ret | 4 pz **803**



60,4x60,4
24"x24"
COPPER | 4 pz **710**
COPPER tech | 4 pz - R10 **730**
COPPER ret 60x60 | 4 pz **745**



30x60,4
12"x24"
COPPER | 8 pz **690**
COPPER tech | 8 pz - R10 **693**
COPPER ret 30x60 | 8 pz **730**



DARK



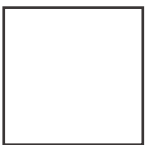
60,4x121
24"x48"

DARK ret | 2 pz **802**



30x121
12"x48"

DARK ret | 4 pz **803**

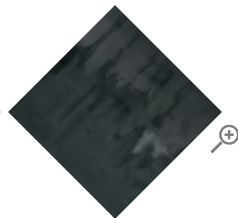


60,4x60,4
24"x24"

DARK | 4 pz **710**

DARK tech | 4 pz - R10 **730**

DARK ret 60x60 | 4 pz **745**

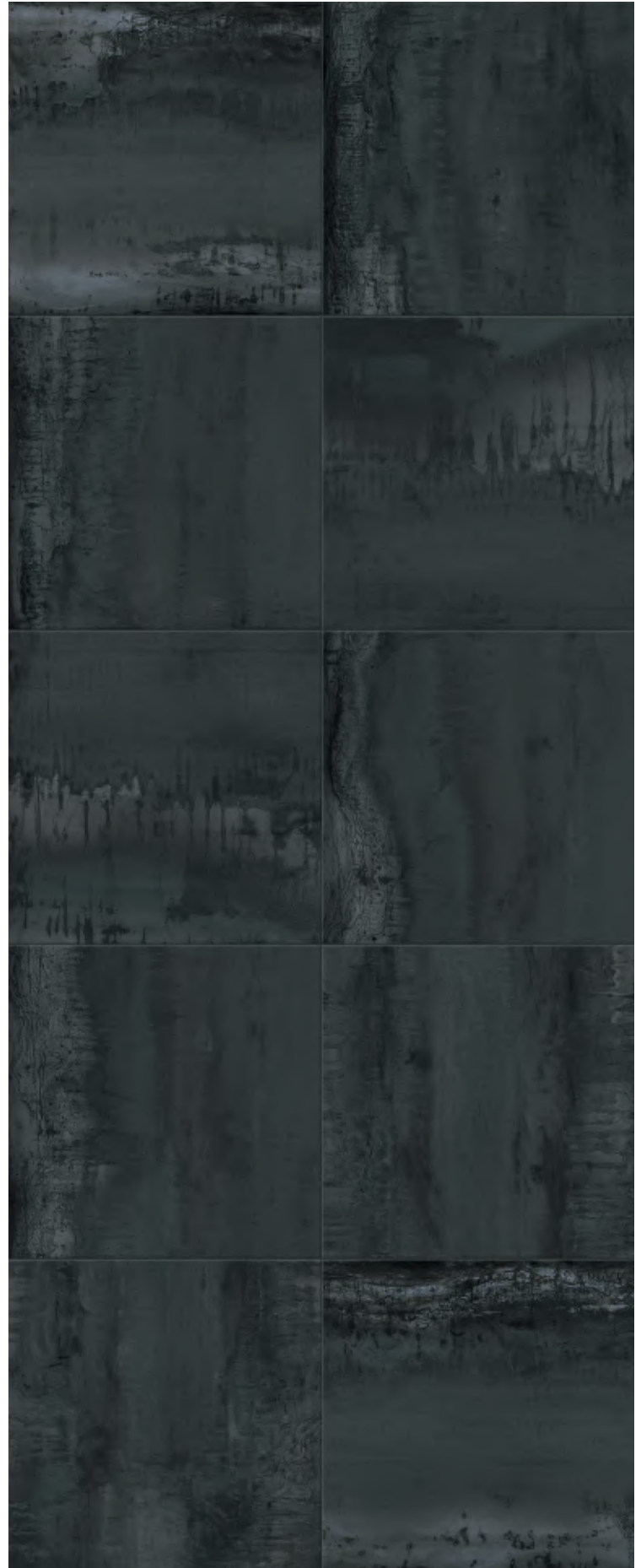
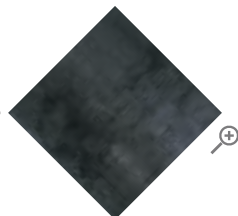


30x60,4
12"x24"

DARK | 8 pz **690**

DARK tech | 8 pz - R10 **693**

DARK ret 30x60 | 8 pz **730**





MET ARCH

pezzi speciali . special pieces . pièces spéciales . Formteile . piezas especiales . нестандартные детали



battiscopa 7,5x30 | 25 pz **50**

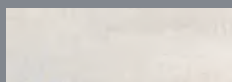
met arch **LIGHT SILVER** bat
 met arch **OXIDE** bat
 met arch **STEEL** bat
 met arch **COPPER** bat
 met arch **DARK** bat

tabella imballi . packing . emballages . Verpackung . tabla de embalajes . таблица вариантов упаковки

	📏	pz/box	m ² /box	kg/m ²	box/plt	m ² /plt	kg/plt
60,4x121 ret	10	2	1,47	22,00	30	44,10	995
30x121 ret	10	4	1,46	22,00	36	52,56	1181
60,4x60,4 / tech	9	4	1,46	17,50	32	46,72	843
60x60 ret	9	4	1,44	17,50	32	46,08	831
30x60,4 / tech	8,2	8	1,45	16,20	40	58,00	965
30x60 ret	8,2	8	1,44	16,20	40	57,60	958
10x30 ret	8,2	32	0,96	16,20	68	65,28	1082
30x30 mosaico	8,2	11	1,00	16,20	30	30,00	511
30x34 mosaico esagono	8,2	5	0,51	16,20	60	30,60	521



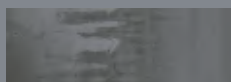
decori . decors . décors . Dekore . decoraciones . декоры



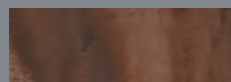
10x30 | 32 pz **750**
met arch **LIGHT SILVER** ret



10x30 | 32 pz **750**
met arch **OXIDE** ret



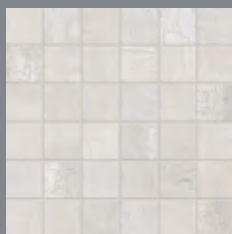
10x30 | 32 pz **750**
met arch **STEEL** ret



10x30 | 32 pz **750**
met arch **COPPER** ret



10x30 | 32 pz **750**
met arch **DARK** ret



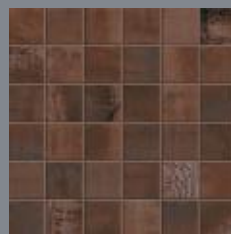
mosaico 30x30 **810**
| 11 pz
met arch **LIGHT SILVER**



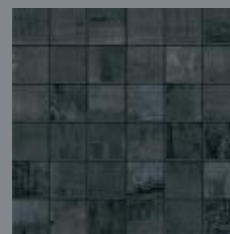
mosaico 30x30 **810**
| 11 pz
met arch **OXIDE**



mosaico 30x30 **810**
| 11 pz
met arch **STEEL**



mosaico 30x30 **810**
| 11 pz
met arch **COPPER**



mosaico 30x30 **810**
| 11 pz
met arch **DARK**



mosaico esagono 30x34 | 5 pz **870**
met arch **LIGHT SILVER**



mosaico esagono 30x34 | 5 pz **870**
met arch **OXIDE**



mosaico esagono 30x34 | 5 pz **870**
met arch **STEEL**



mosaico esagono 30x34 | 5 pz **870**
met arch **COPPER**



mosaico esagono 30x34 | 5 pz **870**
met arch **DARK**



Mosaico su rete utilizzabile anche per rivestimento. Mosaic on net to be used for wall or tiling too.
Netzwerklebets Mosaik, welches sich auch als Wandverkleidung eignet. Mosaïque sur support utilisable également pour le revêtement.
Mosaico en red utilizable también como revestimiento. Мозаика на сетке, может использоваться также и для облицовки.



