

METALIC 31.2X31.2

Created on\_04/11/2017



ABSOLUT KERAMIKA

[www.absolutkeramika.com](http://www.absolutkeramika.com)



## Gallery



tel: (+34) 964 657 738  
fax: (+34) 964 322 151

[www.absolutkeramika.com](http://www.absolutkeramika.com)  
[info@absolutkeramika.com](mailto:info@absolutkeramika.com)

The results shown are approximate. This document does not constitute a contractual relationship. To order or check availability of products, contact the company.

## METALIC 31.2X31.2

Created on\_04/11/2017



# ABSOLUT KERAMIKA

[www.absolutkeramika.com](http://www.absolutkeramika.com)



tel: (+34) 964 657 738  
fax: (+34) 964 322 151

[www.absolutkeramika.com](http://www.absolutkeramika.com)  
[info@absolutkeramika.com](mailto:info@absolutkeramika.com)

The results shown are approximate. This document does not constitute a contractual relationship. To order or check availability of products, contact the company.

# METALIC 31.2X31.2

Created on\_04/11/2017



# ABSOLUT KERAMIKA

[www.absolutkeramika.com](http://www.absolutkeramika.com)



tel: (+34) 964 657 738  
fax: (+34) 964 322 151

[www.absolutkeramika.com](http://www.absolutkeramika.com)  
[info@absolutkeramika.com](mailto:info@absolutkeramika.com)

The results shown are approximate. This document does not constitute a contractual relationship. To order or check availability of products, contact the company.

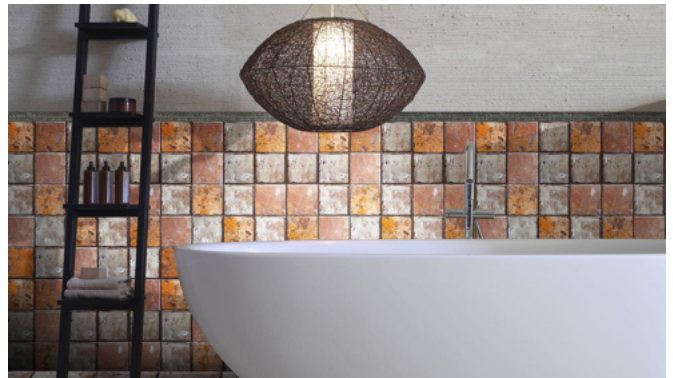
# METALIC 31.2X31.2

Created on\_04/11/2017



# ABSOLUT KERAMIKA

[www.absolutkeramika.com](http://www.absolutkeramika.com)



tel: (+34) 964 657 738  
fax: (+34) 964 322 151

[www.absolutkeramika.com](http://www.absolutkeramika.com)  
[info@absolutkeramika.com](mailto:info@absolutkeramika.com)

The results shown are approximate. This document does not constitute a contractual relationship. To order or check availability of products, contact the company.

## METALIC 31.2X31.2

Created on\_04/11/2017



# ABSOLUT KERAMIKA

[www.absolutkeramika.com](http://www.absolutkeramika.com)



## Base



METALIC WHITE 31.2X31.2  
B28



METALIC BEIGE 31.2X31.2  
B28



METALIC COBALTO 31.2X31.2  
B28

# METALIC 31.2X31.2

Created on\_04/11/2017



# ABSOLUT KERAMIKA

[www.absolutkeramika.com](http://www.absolutkeramika.com)



METALIC GREEN 31.2X31.2  
B28



METALIC RED 31.2X31.2  
B28



METALIC SILVER 31.2X31.2  
B28



METALIC PRE WHITE 31.2X31.2  
B28



METALIC PRE BEIGE 31.2X31.2  
B28



METALIC PRE COBALTO 31.2X31.2  
B28



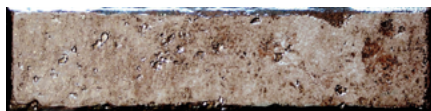
METALIC PRE GREEN 31.2X31.2  
B28



METALIC PRE RED 31.2X31.2  
B28



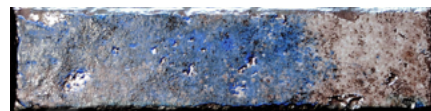
METALIC PRE SILVER 31.2X31.2  
B28



METALIC WHITE 7.5X31.2  
B56



METALIC BEIGE 7.5X31.2  
B56



METALIC COBALTO 7.5X31.2  
B56



METALIC GREEN 7.5X31.2  
B56



METALIC RED 7.5X31.2  
B56



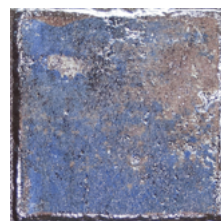
METALIC SILVER 7.5X31.2  
B56



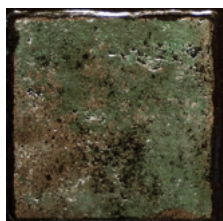
METALIC WHITE 15.5X15.5  
B56



METALIC BEIGE 15.5X15.5  
B56



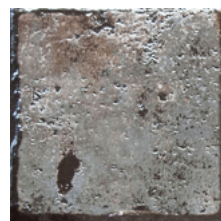
METALIC COBALTO 15.5X15.5  
B56



METALIC GREEN 15.5X15.5  
B56



METALIC RED 15.5X15.5  
B56



METALIC SILVER 15.5X15.5  
B56

## Border/Listelo/Molding



Moldura Metallic Silver 2.5x33.3  
P11



Moldura Metallic Silver 5x33.3  
P12

# METALIC 31.2X31.2

Created on\_04/11/2017



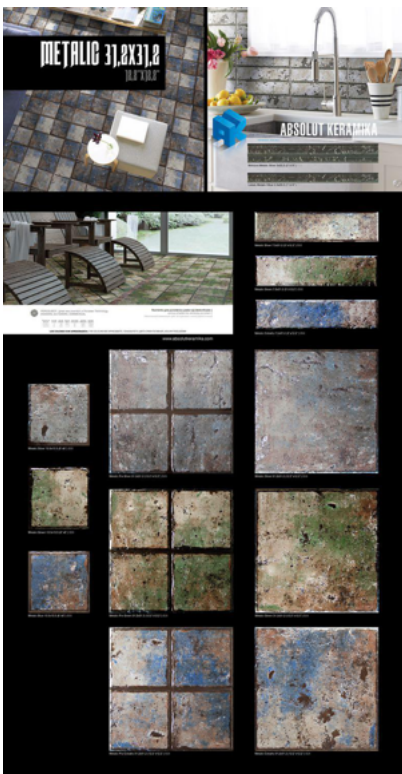
# ABSOLUT KERAMIKA

www.absolutkeramika.com

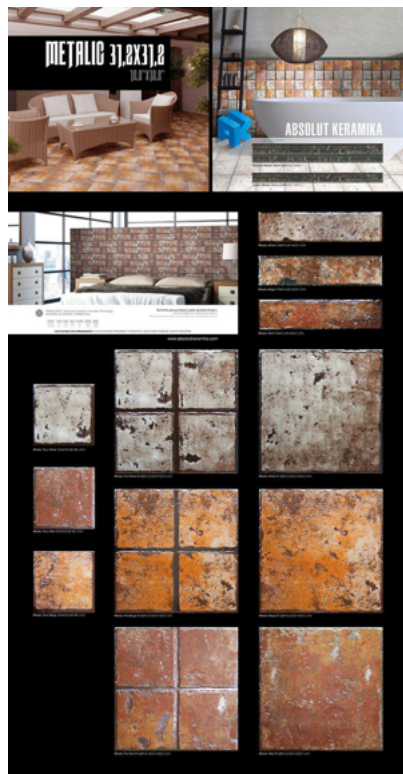
## Packing

Size	units/box	m <sup>2</sup> /box	kg/box	boxes/pallet	m <sup>2</sup> /pallet	kg/pallet
15.5x15.5	24	0.5766	11.14	69	39.79	768.66
2.5x33.3	21		1.40			
31.2x31.2	14	1.3630	16.00	46	62.69	1191.40
5x33.3	21		1.40			
7.5x31.2	20	0.4680	10.1250	69	32.39	698.62

## Merchandising



PT METALIC FRIOS 31.2X31.2 (100.5x192.5)



PT METALIC CALIDOS 31.2X31.2  
(100.5x192.5)

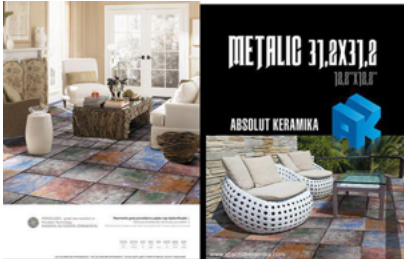


PE METALIC MIX BRICK+TACO (80x180)



# METALIC 31.2X31.2

Created on\_04/11/2017



PE METALIC MIX 31.2X31.2 (80x180)