

# MEWS

design Edward Barber & Jay Osgerby

colours

sizes

technical features

packing

MU  
TIN  
A<sup>®</sup>

**MEWS** / colours

chalk

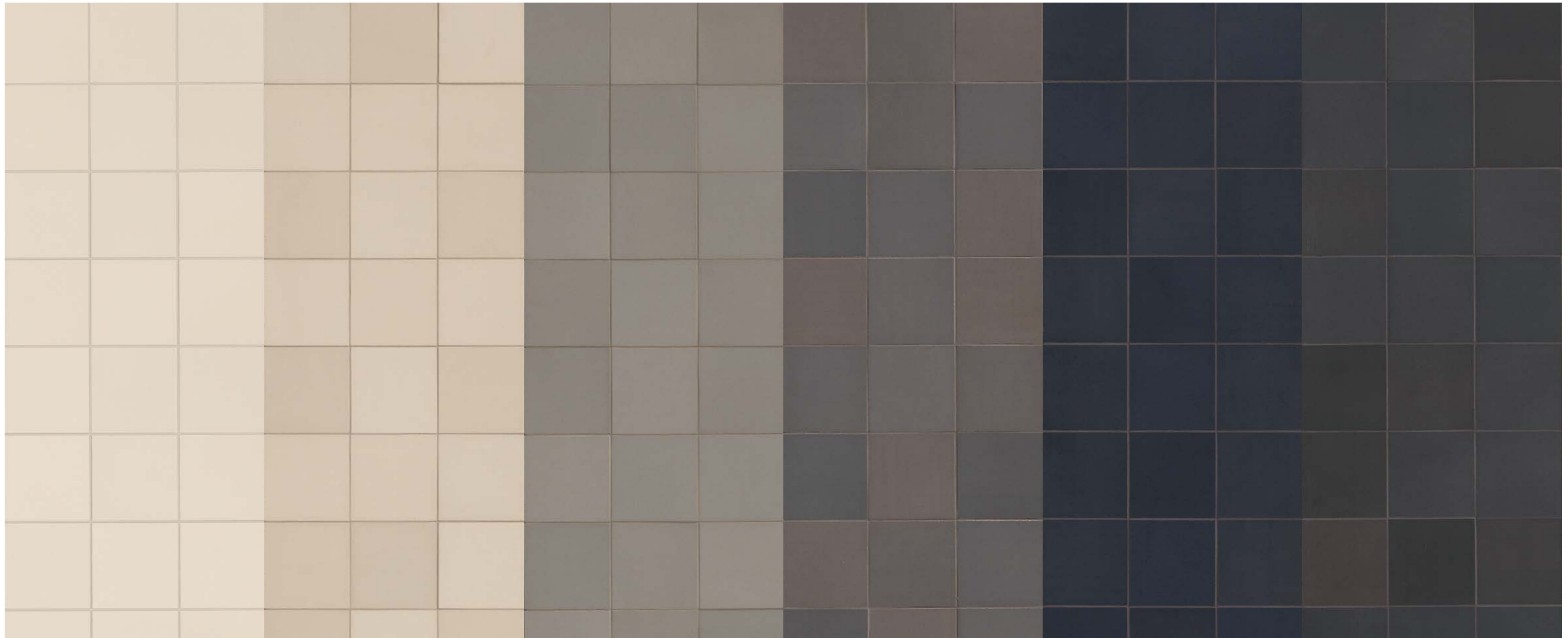
fog

pigeon

lead

ink

soot



## MEWS

Modello depositato n° 002336909-0005/0012 – data di deposito: 31/10/2013 - Registered design n° 002336909-0005/0012 – date of registration: 31/10/2013

**design** Edward Barber and Jay Osgerby 2013

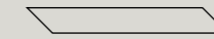
**production** industrial

**material** gres porcellanato smaltato ad impasto omogeneo - glazed homogeneous porcelain stoneware

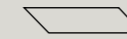
**features** pezzi tagliati ognuno esattamente uguale all'altro - cut pieces each one exactly the same as the others

**thickness** 10 mm

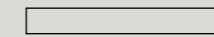
\*misure nominali - nominal sizes



5,5-39,4 chevron  
\* 2<sup>1</sup>/<sub>5</sub>"·15<sup>1</sup>/<sub>2</sub>"



5,5-19,6 chevron  
\* 2<sup>1</sup>/<sub>5</sub>"·7<sup>3</sup>/<sub>4</sub>"

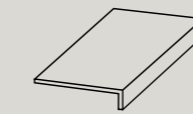


5,5-45  
\* 2<sup>1</sup>/<sub>5</sub>"·18"

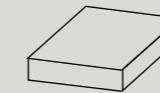


11-11  
\* 4<sup>1</sup>/<sub>3</sub>"·4<sup>1</sup>/<sub>3</sub>"

### complementary pieces



33-45-4,5  
\* 13"<sup>1</sup>/<sub>2</sub>"·18"<sup>1</sup>/<sub>4</sub>"  
gradone - step



33-33-4,5  
\* 13"<sup>1</sup>/<sub>2</sub>"·13"<sup>1</sup>/<sub>4</sub>"  
angolare - corner tile



3,8-45  
\* 1<sup>1</sup>/<sub>2</sub>"·18"  
battiscopa - skirting

## MEWS / technical features

### Bla GROUP

norma standard	caratteristiche features	valore prescritto value required	MEWS
<b>ISO 10545/2</b>	DIMENSIONI - SIZES lunghezza e larghezza - length and width spessore - thickness rettilinearità degli spigoli - straightness of edges ortogonalità - wedging planarità - flatness	± 0,6% ± 5% ± 0,5% ± 0,6% ± 0,5%	conforme in conformity with standard
<b>ISO 10545/3</b>	assorbimento d'acqua water absorption	<0,5%	0,04%
<b>ASTM C373</b>		<0,5%	0,04%
<b>EN 101</b>	durezza superficiale (scala mohs) surface hardness (scala mohs)	> 5	7
<b>ISO 10545/9</b>	resistenza agli sbalzi termici resistance to thermal shock	nessuna alterazione visibile no visible alteration	resiste resistant
<b>ASTM C484</b>		no samples must show visible defects	unaffected
<b>ISO 10545/12</b>	resistenza al gelo frost resistance	nessuna alterazione visibile no visible alteration	resiste resistant
<b>ASTM C1026</b>		unaffected	unaffected
<b>ISO 10545/13</b>	resistenza agli attacchi chimici resistance to chemical attacks	nessuna alterazione visibil no visible alteration	resiste resistant
<b>ASTM C650</b>			unaffected
<b>BCRA</b>	scivolosità antislip	> 0,40	dry 0,6 wet 0,42
<b>DIN 51130 - 04</b>		valori medi 6° ÷ 10° 10° ÷ 19° 19° ÷ 27° 27° ÷ 35° > 35°	R9 R10 R11 R12 R13
<b>ASTM C1028</b>		> 0,60	dry 0,75 wet 0,75

## MEWS / packing

formato size	pz-mq pcs-sqm	pz-scat. pcs-box	mq-scat. sqm-box	scat.·pal. box-pal.	kg-scat. kg-box	kg-pal. kg-pal.	mq-pal sqms-pal
5,5-39,4 chevron	46,15	36	0,78	40	17,55	702	31,20
5,5-19,6 chevron	92,76	72	0,78	40	17,40	696	31,20
5,5-45	40,40	36	0,89	40	20,20	808	35,60
11-11	82,64	60	0,73	48	16,70	802	35,04
gradone 33-45-4,5	-	2	0,9 ml	-	8,00	-	-
angolare 33-33-4,5	-	1	0,33 ml	-	6,10	-	-
battiscopa 3,8-45	-	10	4,5 ml	-	3,65	-	-



V4  
variazione forte  
dramatic variation

**MUTINA.IT**

Follow us on

