

NUMI

design Konstantin Grcic

colours

sizes

technical features

packing

MU
TIN
A[®]

NUMI / sizes and colours

NUMI / *60·60 (24"·24") - *30·30 (12"·12")



WHITE



LIGHT GREY



BLUE



TAUPE



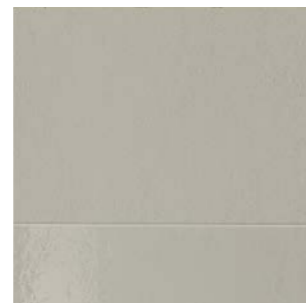
DARK GREY



BLACK



CLIMB / A



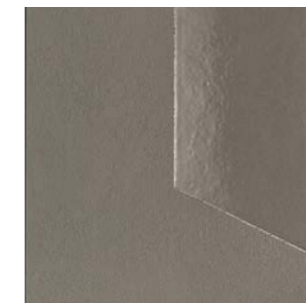
HORIZON / A



MOON / A



COURT / A



CLIFF / A



SLOPE / A



CLIMB / B



HORIZON / B



MOON / B



COURT / B



CLIFF / B

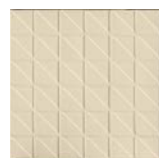


SLOPE / B

complementary pieces

skirting *3,8·60 - *2"·24" / step *30·60·4,5 - 12"·24"·1 7/8" / corner tile *30·60·4,5 - *12"·24"·1 7/8"

NUMINI / *5·5 su rete *31,6·31,6 - *2"·2" on net *12"·12"



SINGLE PIECE



CLIMB



SINGLE PIECE



BAY



SINGLE PIECE



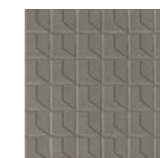
MOON



SINGLE PIECE



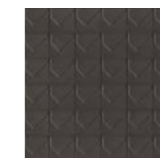
COURT



SINGLE PIECE



CLIFF



SINGLE PIECE



PEAK

NUMI / technical features

BI GROUP

norma standard	caratteristiche features	valore prescritto value required	NUMI
ISO 10545/3	assorbimento d'acqua water absorption	<0,5%	<0,5%
ASTM C373		<0,5%	<0,5%
EN 101	durezza superficiale (scala mohs) surface hardness (scala mohs)	≥ 5	5
ISO 10545/9	resistenza agli sbalzi termici resistance to thermal shock	nessuna alterazione visibile no visible alteration	resiste resistant
ASTM C484		no samples must show visible defects	unaffected
ISO 10545/12	resistenza al gelo frost resistance	nessuna alterazione visibile no visible alteration	resiste resistant
ASTM C1026		unaffected	unaffected
ISO 10545/13	resistenza agli attacchi chimici resistance to chemical attacks	nessuna alterazione visibile no visible alteration	resiste resistant
ASTM C650		unaffected	unaffected
ISO 10545/4	sforzo di rottura (N) breaking strength (N)	Sp≥ 7,5 min 1300	resiste resistant
ISO 10545/7	resistenza all'abrasione superficiale resistance to superficial abrasion		PEI 3

BI GROUP

norma standard	caratteristiche features	valore prescritto value required	NUMINI
ISO 10545/3	assorbimento d'acqua water absorption	<0,5%	< 0,5%
ASTM C373		<0,5%	< 0,5%
ISO 10545/9	resistenza agli sbalzi termici resistance to thermal shock	nessuna alterazione visibile no visible alteration	resiste resistant
ASTM C484		no samples must show visible defects	unaffected
ISO 10545/12	resistenza al gelo frost resistance	nessuna alterazione visibile no visible alteration	resiste resistant
ASTM C1026		unaffected	unaffected
ISO 10545/13	resistenza agli attacchi chimici resistance to chemical attacks	nessuna alterazione visibile no visible alteration	resiste resistant
ASTM C650		unaffected	unaffected
ISO 10545/4	sforzo di rottura (N) breaking strength (N)	N/mm2 > 35	resiste resistant
DIN 51130 - 04		valori medi 6° ÷ 10° 10° ÷ 19° 19° ÷ 27° 27° ÷ 35° > 35°	R9 R10 R11 R12 R13 R10
ISO 10545/14	resistenza alle macchie stains resistance	CLASSE 3 MIN. MINIMUM 3	5

NUMI / packing

formato size	pz-mq pcs-sqm	pz-scat. pcs-box	mq-scat. sqm-box	scat.-pal. box-pal.	kg-scat. kg-box	kg-pal. kg-pal.	mq-pal sqms-pal
60-60	2,77	3	1,08	32	22	704	34,56
30-30	11,11	11	0,99	22	20	440	21,78
numini 31,6-31,6	10	5	0,5	90	6,7	603	45
battiscopa 3,8-60	-	10	6 ml	-	5,00	-	-
gradone 33-60-4,5	-	2	1,2 ml	-	9,00	-	-
angolare 33-60-4,5	-	1	0,6 ml	-	9,60	-	-

MUTINA.IT

Follow us on

