

On Square

27

E1N7 303B8RA
On Square Decor
Cemento/Lavagna Nat. Rett.
30x30 - 11^{13/16}" x 11^{13/16}"

E1NN 633B8R
Cemento Nat. Rett.
30x60 - 11^{13/16}" x 23^{5/8}"

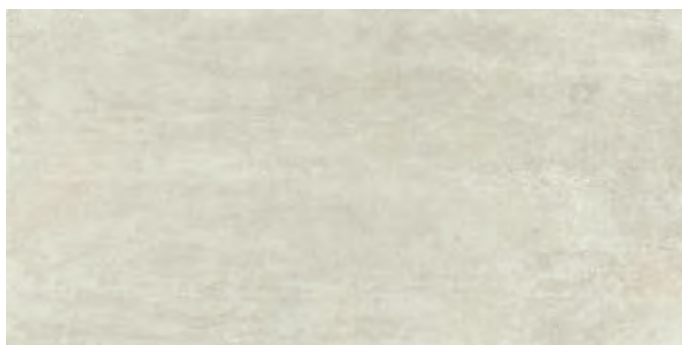
E1NE 603B8R
Cemento Nat. Rett.
60x60 - 23^{5/8}" x 23^{5/8}"

COLORI/FORMATI

COLOURS / SIZES - COULEURS / FORMATS - FARBEN / FORMATE - COLORES / TAMAÑOS - ЦВЕТА / ФОРМАТЫ

Avorio

28



60x120 - 23^{5/8}" x 47^{1/4}"

E78J 983B0R Naturale Rett.

● 771

E7HH 983B0P Lappato Rett.

● 80



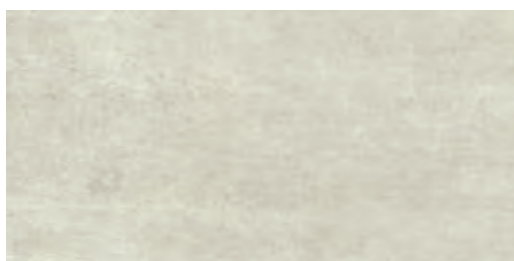
60x60 - 23^{5/8}" x 23^{5/8}"

E1N9 603B0R Nat. Rett.

● 662

E1N8 603B0P Lapp. Rett.

● 771



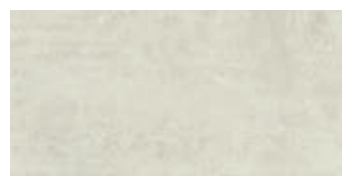
45x90 - 17^{11/16}" x 35^{7/16}"

E2LA 943B0R Naturale Rett.

● 73

E2L9 943B0P Lappato Rett.

● 81



30x60 - 11^{13/16}" x 23^{5/8}"

E1NJ 633B0R Nat. Rett.

● 61

E1NH 633B0P Lapp. Rett.

● 73

20MM



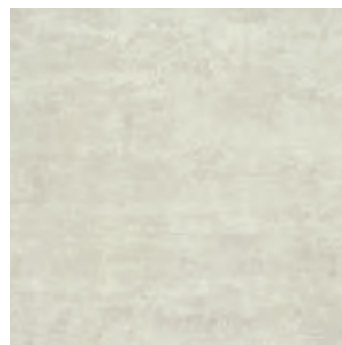
80x80 - 31^{1/2}" x 31^{1/2}"

E1NS 803B0R Naturale Rett.

● 78

E1NR 803B0P Lappato Rett.

● 81



60x60 - 23^{5/8}" x 23^{5/8}"

E2PE X603B0R Nat. Rett.

● 83

20MM



45x90 - 17^{11/16}" x 35^{7/16}"

E7TU X943B0R Naturale Rett.

● 84

Si consiglia la posa con fuga 2 mm. - Laying with a 2 mm-joint is recommended.
Pose recommandée avec joints de 2 mm. - Es wird eine Fugenbreite von 2 mm empfohlen.
Se recomienda la colocación con juntas de 2 mm. - Рекомендується укладка с швом 2 мм.

Sabbia



60x120 - 23^{5/8}" x 47^{1/4}"

E78K 983B3R Naturale Rett.

E7HJ 983B3P Lappato Rett.

● 771

● 80



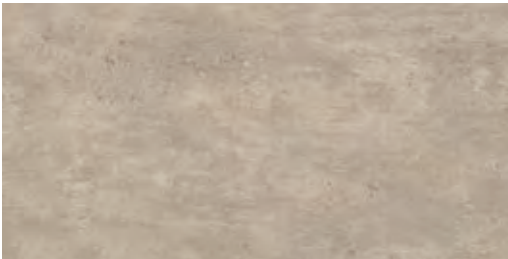
60x60 - 23^{5/8}" x 23^{5/8}"

E1NC 603B3R Nat. Rett.

E1NA 603B3P Lapp. Rett.

● 662

● 771



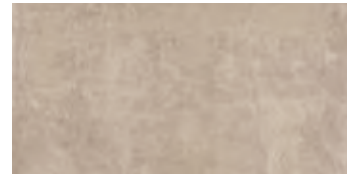
45x90 - 17^{11/16}" x 35^{7/16}"

E2LD 943B3R Naturale Rett.

E2LC 943B3P Lappato Rett.

● 73

● 81



30x60 - 11^{13/16}" x 23^{5/8}"

E1NL 633B3R Nat. Rett.

E1NK 633B3P Lapp. Rett.

● 61

● 73

20MM



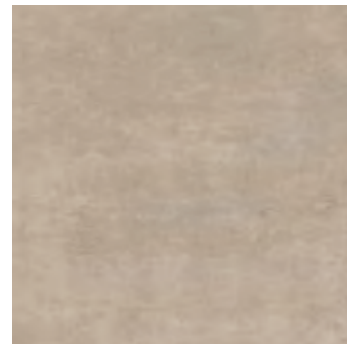
80x80 - 31^{1/2}" x 31^{1/2}"

E1NU 803B3R Naturale Rett.

E1NT 803B3P Lappato Rett.

● 78

● 81



60x60 - 23^{5/8}" x 23^{5/8}"

E2PF X603B3R Nat. Rett.

● 83

20MM



45x90 - 17^{11/16}" x 35^{7/16}"

E7TV X943B3R Naturale Rett.

● 84

Si consiglia la posa con fuga 2 mm. - Laying with a 2 mm-joint is recommended.
 Pose recommandée avec joints de 2 mm. - Es wird eine Fugenbreite von 2 mm empfohlen.
 Se recomienda la colocación con juntas de 2 mm. - Рекомендується укладка с швом 2 мм.

COLORI/FORMATI

COLOURS / SIZES - COULEURS / FORMATS - FARBEN / FORMATE - COLORES / TAMAÑOS - ЦВЕТА / ФОРМАТЫ

Cemento

30



60x120 - 23^{5/8}" x 47^{1/4}"

E78L 983B8R Naturale Rett.

● 771

E7GN 983B8P Lappato Rett.

● 80



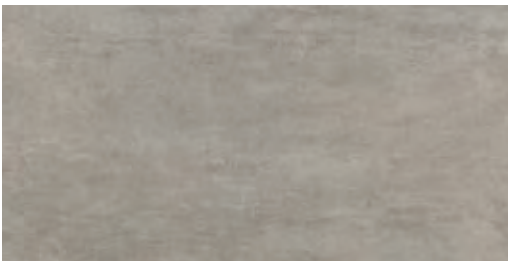
60x60 - 23^{5/8}" x 23^{5/8}"

E1NE 603B8R Nat.Rett.

● 662

E1ND 603B8P Lapp. Rett.

● 771



45x90 - 17^{11/16}" x 35^{7/16}"

E2LF 943B8R Naturale Rett.

● 73

E2LE 943B8P Lappato Rett.

● 81



30x60 - 11^{13/16}" x 23^{5/8}"

E1NN 633B8R Nat.Rett.

● 61

E1NM 633B8P Lapp. Rett.

● 73

20MM



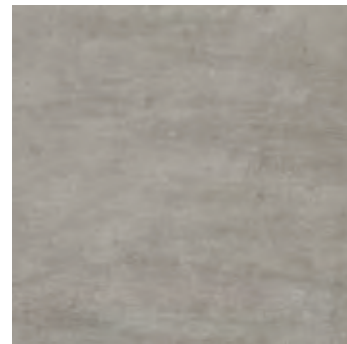
80x80 - 31^{1/2}" x 31^{1/2}"

E1NW 803B8R Naturale Rett.

● 78

E1NV 803B8P Lappato Rett.

● 81

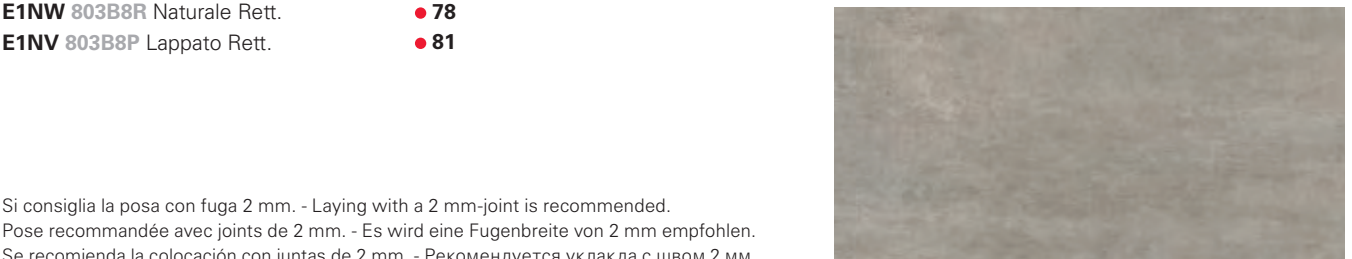


60x60 - 23^{5/8}" x 23^{5/8}"

E2PG X603B8R Nat.Rett.

● 83

20MM



45x90 - 17^{11/16}" x 35^{7/16}"

E7TW X943B8R Naturale Rett.

● 84

Si consiglia la posa con fuga 2 mm. - Laying with a 2 mm-joint is recommended.
Pose recommandée avec joints de 2 mm. - Es wird eine Fugenbreite von 2 mm empfohlen.
Se recomienda la colocación con juntas de 2 mm. - Рекомендуются укладка с швом 2 мм.

Lavagna



60x120 - 23^{5/8}" x 47^{1/4}"

E78M 983B9R Naturale Rett.

● 771

E7HK 983B9P Lappato Rett.

● 80



60x60 - 23^{5/8}" x 23^{5/8}"

E1NG 603B9R Nat. Rett.

● 662

E1NF 603B9P Lapp. Rett.

● 771



45x90 - 17^{11/16}" x 35^{7/16}"

E2LH 943B9R Naturale Rett.

● 73

E2LG 943B9P Lappato Rett.

● 81



30x60 - 11^{13/16}" x 23^{5/8}"

E1NQ 633B9R Nat. Rett.

● 61

E1NP 633B9P Lapp. Rett.

● 73

20MM



80x80 - 31^{1/2}" x 31^{1/2}"

E1NY 803B9R Naturale Rett.

● 78

E1NX 803B9P Lappato Rett.

● 81

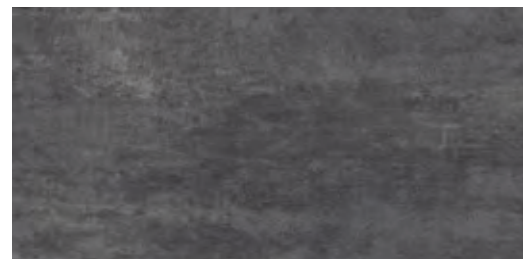


60x60 - 23^{5/8}" x 23^{5/8}"

E37L X603B9R Nat. Rett.

● 83

20MM



45x90 - 17^{11/16}" x 35^{7/16}"

E7TX X943B9R Naturale Rett.

● 84

Si consiglia la posa con fuga 2 mm. - Laying with a 2 mm-joint is recommended.
 Pose recommandée avec joints de 2 mm. - Es wird eine Fugenbreite von 2 mm empfohlen.
 Se recomienda la colocación con juntas de 2 mm. - Рекомендуется укладка с швом 2 мм.

DECORI

DECORS - DECORS - DEKORE - DECORADOS - ДЕКОРЫ

32

MOSAICO*

Tessera - Chip 4,8x4,8 - 17/8"x17/8"

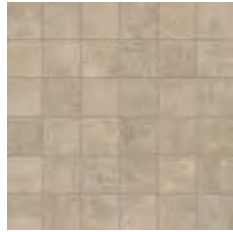


30x30 - 11 13/16" x 11 13/16"

E2Y9 I303B0R

Avorio Nat.

● 92

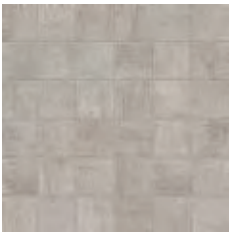


30x30 - 11 13/16" x 11 13/16"

E2YA I303B3R

Sabbia Nat.

● 92



30x30 - 11 13/16" x 11 13/16"

E2YC I303B8R

Cemento Nat.

● 92



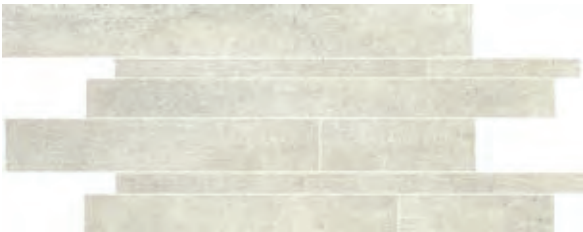
30x30 - 11 13/16" x 11 13/16"

E2YD I303B9R

Lavagna Nat.

● 92

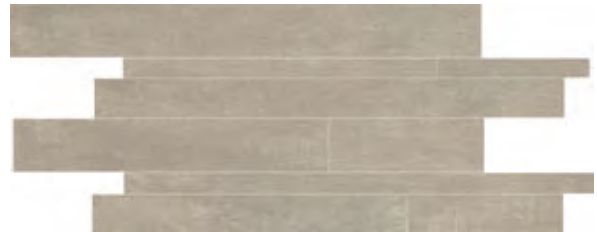
LISTELLI SFALSATI*



30x60 - 11 13/16" x 23 5/8"

E1N2 M633B0R Avorio Naturale

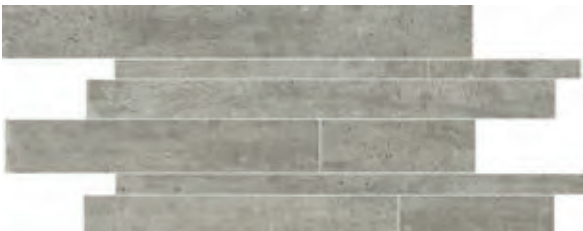
● 87



30x60 - 11 13/16" x 23 5/8"

E1N3 M633B3R Sabbia Naturale

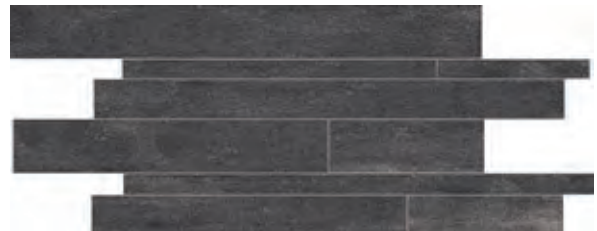
● 87



30x60 - 11 13/16" x 23 5/8"

E1N4 M633B8R Cemento Naturale

● 87



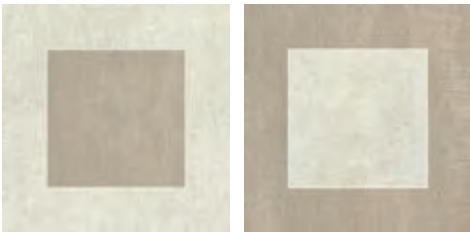
30x60 - 11 13/16" x 23 5/8"

E1N5 M633B9R Lavagna Naturale

● 87

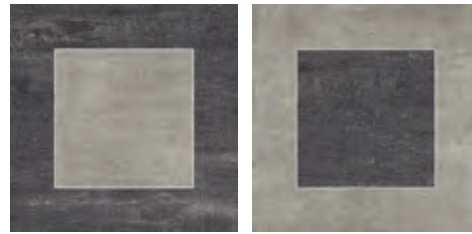
* Su rete in fibra - On fibre mesh backing - Sur filet en fibre de verre - Auf Glasfasernetz - Sobre malla de fibra - На волоконной сетке

ON SQUARE DECOR



30x30 - 11 13/16" x 11 13/16"
E1N6 303B0RA
Avorio/Sabbia Nat. Rett.
Pcs. Box 4

● 25



30x30 - 11 13/16" x 11 13/16"
E1N7 303B8RA
Cemento/Lavagna Nat. Rett.
Pcs. Box 4

● 25



E1NG 603B0R
Lavagna Naturale
60x60 - 23 5/8" x 23 5/8"

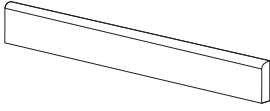
E1NL 633B3R
Sabbia Naturale
30x60 - 11 13/16" x 23 5/8"

E1N6 303B0RA
On Square Decor Avorio/Sabbia
30x30 - 11 13/16" x 11 13/16"

PEZZI SPECIALI

TRIMS - PIECES SPECIALES - FORMTEILE - PIEZAS ESPECIALES - СПЕЦИАЛЬНЫЕ ИЗДЕЛИЯ

34

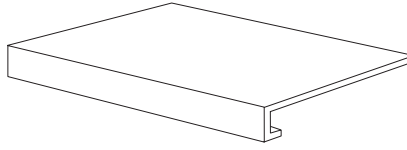


BATTISCOPIA - SKIRTING

7,5x60 - 2^{15/16}"x23^{5/8}"

Pcs. Box 15 - ML x Box 9

- E1QM 873B0R** Avorio Nat. Rett. ● 11
- E1QN 873B3R** Sabbia Nat. Rett. ● 11
- E1QP 873B8R** Cemento Nat. Rett. ● 11
- E1QQ 873B9R** Lavagna Nat. Rett. ● 11

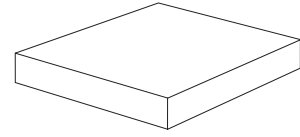


GRADONE - STEP

33x60x3,2x3,2 - 12^{15/16}"x23^{5/8}"x1^{1/4}"x1^{1/4}"

Pcs. Box 4 - ML x Box 2,40

- E2DP 1C3B0R** Avorio Nat. Rett. ● 661
- E8L7 1C3B3R** Sabbia Nat. Rett. ● 661
- E8L8 1C3B8R** Cemento Nat. Rett. ● 661
- E2DQ 1C3B9R** Lavagna Nat. Rett. ● 661

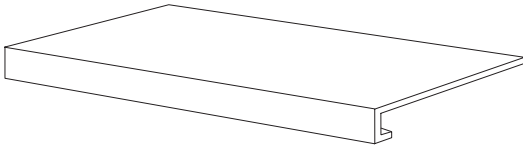


ANGOLARE - CORNERTILE

33x33x3,2x3,2 - 12^{15/16}"x12^{15/16}"x1^{1/4}"x1^{1/4}"

Pcs. Box 2 - ML x Box 0,66

- E8L6 1A3B0R** Avorio Nat. Rett. ● 58
- E8LE 1A3B3R** Sabbia Nat. Rett. ● 58
- E8LF 1A3B8R** Cemento Nat. Rett. ● 58
- E8LG 1A3B9R** Lavagna Nat. Rett. ● 58

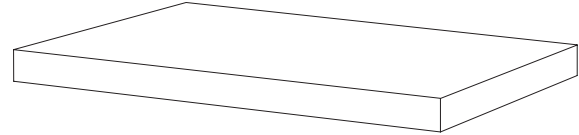


GRADONE - STEP

33x120x3,2x3,2 - 12^{15/16}"x47^{1/4}"x1^{1/4}"x1^{1/4}"

Pcs. Box 2 - ML x Box 2,40

- E8T8 CR3B0R** Avorio Nat. Rett. ● 95
- E8CZ CR3B3R** Sabbia Nat. Rett. ● 95
- E8TC CR3B8R** Cemento Nat. Rett. ● 95
- E8TE CR3B9R** Lavagna Nat. Rett. ● 95
- E8T7 CR3B0P** Avorio Lapp. Rett. ● 99
- E8T9 CR3B3P** Sabbia Lapp. Rett. ● 99
- E8TA CR3B8P** Cemento Lapp. Rett. ● 99
- E8TD CR3B9P** Lavagna Lapp. Rett. ● 99



ANGOLARE DX / SX - CORNERTILE DX / SX

33x120x3,2x3,2 - 12^{15/16}"x47^{1/4}"x1^{1/4}"x1^{1/4}"

Pcs. Box 1 - ML x Box 1,20

- E8SG AC3B0RD / E8SH AC3B0RS** Avorio Nat. Rett. ● 100
- E8SL AC3B3RD / E8SM AC3B3RS** Sabbia Nat. Rett. ● 100
- E8SQ AC3B8RD / E8SR AC3B8RS** Cemento Nat. Rett. ● 100
- E8SU AC3B9RD / E8SV AC3B9RS** Lavagna Nat. Rett. ● 100
- E8SE AC3B0PD / E8SF AC3B0PS** Avorio Lapp. Rett. ● 101
- E8SJ AC3B3PD / E8SK AC3B3PS** Sabbia Lapp. Rett. ● 101
- E8SN AC3B8PD / E8SP AC3B8PS** Cemento Lapp. Rett. ● 101
- E8SS AC3B9PD / E8ST AC3B9PS** Lavagna Lapp. Rett. ● 101

IMBALLI E PESI

PACKING AND WEIGHT - EMBALLAGES ET POIDS - VERPACKUNG UND GEWICHT - EMBALAJES Y PESOS - УПАКОВКА И ВЕС

Formato Size Format Format Тamaño Формат cm	Spessore Thickness Epaisseur Stärke Espesor Толщина mm	Pz. x Mq. Pieces x Sqm Pcs / M ² Stk. x Qm Pzs x Mc. Шт x Кв.М.	Pz. x Scat. Pieces x Box Pcs / Bte Stk. x Krt. Pzs x Caja Шт x Кор.	Mq. x Scat. Sqm x Box M ² / Bte Qm x Krt. Mc. x Caja Кв.М. x Кор.	Peso x Scat. Weight x Box Poids / Bte Gewicht x Krt. Peso x Caja Вес x Кор. Kg	Scat. x Pal. Boxes x Pal. Bte / Pal. Krt. x Pal. Cajas x Pal. Кор. x Подд.	Mq. x Pal. Sqm x Pal. M ² / Pal. Qm x Pal. Mc. x Pal. Кв.М x Подд.	Peso x Pal. Weight x Pal. Poids / Pal. Gewicht x Pal. Peso x Pal. Вес x Подд. Kg
80x80 Naturale - Lappato	10	1,56	2	1,280	30,37	42	53,76	1276
45x90 Naturale - Lappato	10	2,47	3	1,215	28,01	32	38,88	896
60x120 Naturale - Lappato	10	1,39	2	1,440	33,28	36	51,84	1198
60x60 Naturale - Lappato	10	2,78	3	1,080	23,79	40	43,20	952
30x60 Naturale - Lappato	10	5,56	6	1,080	24,18	40	43,20	967
45x90 Naturale 20MM	20	2,47	2	0,810	36,05	27	21,87	973
60x60 Naturale 20MM	20	2,78	2	0,720	33,30	32	23,04	1066
30x60 Listelli sfalsati	10	5,56	4	0,720	16,65	30	21,60	500
30x30 Mosaico	10	11,11	5	0,450	10,40	60	27,00	624



GRADONE - STEP

33x60x5 - 12^{15/16}" x 23^{5/8}" x 1^{15/16}"

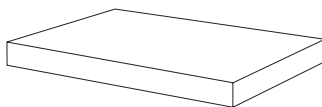
Pcs. Box 2 - ML x Box 1,20

- E95R 2S3B0R** Avorio Nat. Rett. ● **83**
- E95U 2S3B3R** Sabbia Nat. Rett. ● **83**
- E2W9 2S3B8R** Cemento Nat. Rett. ● **83**
- E9F3 2S3B9R** Lavagna Nat. Rett. ● **83**

33x90x5 - 12^{15/16}" x 35^{7/16}" x 1^{15/16}"

Pcs. Box 2 - ML x Box 1,80

- E9U1 6G3B0R** Avorio Nat. Rett. ● **90**
- E9U4 6G3B3R** Sabbia Nat. Rett. ● **90**
- E9U7 6G3B8R** Cemento Nat. Rett. ● **90**
- E9UA 6G3B9R** Lavagna Nat. Rett. ● **90**



ANGOLARE DX / SX - CORNER TILE DX / SX

33x60x5 - 12^{15/16}" x 23^{5/8}" x 1^{15/16}"

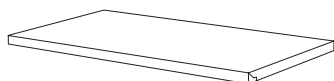
Pcs. Box 2 - ML x Box 1,20

- E95S 2S3B0RD / E95T 2S3B0RS** Avorio Nat. Rett. ● **93**
- E95V 2S3B3RD / E95W 2S3B3RS** Sabbia Nat. Rett. ● **93**
- E95X 2S3B8RD / E95Y 2S3B8RS** Cemento Nat. Rett. ● **93**
- E9F4 2S3B9RD / E9F5 2S3B9RS** Lavagna Nat. Rett. ● **93**

33x90x5 - 12^{15/16}" x 35^{7/16}" x 1^{15/16}"

Pcs. Box 2 - ML x Box 1,80

- E9U2 6G3B0RD / E9U3 6G3B0RS** Avorio Nat. Rett. ● **97**
- E9U5 6G3B3RD / E9U6 6G3B3RS** Sabbia Nat. Rett. ● **97**
- E9U8 6G3B8RD / E9U9 6G3B8RS** Cemento Nat. Rett. ● **97**
- E9UC 6G3B9RD / E9UD 6G3B9RS** Lavagna Nat. Rett. ● **97**



TERMINALE - ENDINGPIECE

33x60x2,5 - 12^{15/16}" x 23^{5/8}" x 1^{15/16}"

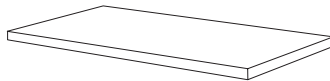
Pcs. Box 2 - ML x Box 1,20

- E968 3S3B0R** Avorio Nat. Rett. ● **83**
- E96C 3S3B3R** Sabbia Nat. Rett. ● **83**
- E2WA 3S3B8R** Cemento Nat. Rett. ● **83**
- E9F6 3S3B9R** Lavagna Nat. Rett. ● **83**

33x90x2,5 - 12^{15/16}" x 35^{7/16}" x 1^{15/16}"

Pcs. Box 2 - ML x Box 1,80

- E9US 7G3B0R** Avorio Nat. Rett. ● **90**
- E9UV 7G3B3R** Sabbia Nat. Rett. ● **90**
- E9UY 7G3B8R** Cemento Nat. Rett. ● **90**
- E9V1 7G3B9R** Lavagna Nat. Rett. ● **90**



ANG. TERMINALE DX / SX - ENDINGPIECE CORNER DX / SX

33x60x2,5 - 12^{15/16}" x 23^{5/8}" x 1^{15/16}"

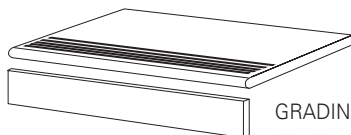
Pcs. Box 2 - ML x Box 1,20

- E969 3S3B0RD / E96A 3S3B0RS** Avorio Nat. Rett. ● **93**
- E96D 3S3B3RD / E96E 3S3B3RS** Sabbia Nat. Rett. ● **93**
- E96F 3S3B8RD / E96G 3S3B8RS** Cemento Nat. Rett. ● **93**
- E9F7 3S3B9RD / E9F8 3S3B9RS** Lavagna Nat. Rett. ● **93**

33x90x2,5 - 12^{15/16}" x 35^{7/16}" x 1^{15/16}"

Pcs. Box 2 - ML x Box 1,80

- E9UT 7G3B0RD / E9UU 7G3B0RS** Avorio Nat. Rett. ● **97**
- E9UW 7G3B3RD / E9UX 7G3B3RS** Sabbia Nat. Rett. ● **97**
- E9UZ 7G3B8RD / E9V0 7G3B8RS** Cemento Nat. Rett. ● **97**
- E9V2 7G3B9RD / E9V3 7G3B9RS** Lavagna Nat. Rett. ● **97**



GRADINO - STAIR TREAD

33x60 - 12^{15/16}" x 23^{5/8}"

Pcs. Box 2 - ML x Box 1,20

- E96H 4S3B0R** Avorio Nat. Rett. ● **77**
- E96J 4S3B3R** Sabbia Nat. Rett. ● **77**
- E2WC 4S3B8R** Cemento Nat. Rett. ● **77**
- E9F9 4S3B9R** Lavagna Nat. Rett. ● **77**

33x90 - 12^{15/16}" x 35^{7/16}"

Pcs. Box 2 - ML x Box 1,80

- E9VH 8G3B0R** Avorio Nat. Rett. ● **88**
- E9VJ 8G3B3R** Sabbia Nat. Rett. ● **88**
- E9VK 8G3B8R** Cemento Nat. Rett. ● **88**
- E9VL 8G3B9R** Lavagna Nat. Rett. ● **88**

ALZATA - RISER

16,5x60 - 6^{1/2}" x 23^{5/8}"

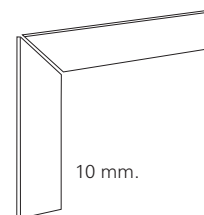
Pcs. Box 2 - ML x Box 1,20

- E2W6 1T3B0R** Avorio Nat. Rett. ● **40**
- E2W7 1T3B3R** Sabbia Nat. Rett. ● **40**
- E2W8 1T3B8R** Cemento Nat. Rett. ● **40**
- E37M 1T3B9R** Lavagna Nat. Rett. ● **40**

16,5x90 - 6^{1/2}" x 35^{7/16}"

Pcs. Box 4 - ML x Box 3,60

- E9TT 3T3B0R** Avorio Nat. Rett. ● **53**
- E9TU 3T3B3R** Sabbia Nat. Rett. ● **53**
- E9TV 3T3B8R** Cemento Nat. Rett. ● **53**
- E9TW 3T3B9R** Lavagna Nat. Rett. ● **53**

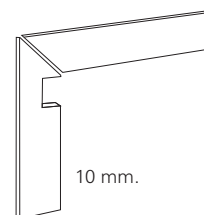


BATTISCOPA SCALA DX / SX
TREAD SKIRTING DX / SX

7,5x60x60 - 2^{15/16}" x 23^{5/8}" x 23^{5/8}"

Pcs. Box 2 - ML x Box 1,20

- E2W1 / E954**
- BA3B0RD / BA3B0RS** Avorio Nat. Rett. ● **42**
- E955 / E956**
- BA3B3RD / BA3B3RS** Sabbia Nat. Rett. ● **42**
- E957 / E958**
- BA3B8RD / BA3B8RS** Cemento Nat. Rett. ● **42**
- E32X / E9F0**
- BA3B9RD / BA3B9RS** Lavagna Nat. Rett. ● **42**



BATTISCOPA SCALA DX / SX
TREAD SKIRTING DX / SX

7,5x60x60 - 2^{15/16}" x 23^{5/8}" x 23^{5/8}"

Pcs. Box 2 - ML x Box 1,20

- E959 / E95A**
- BB3B0RD / BB3B0RS** Avorio Nat. Rett. ● **42**
- E95C / E95D**
- BB3B3RD / BB3B3RS** Sabbia Nat. Rett. ● **42**
- E95E / E95F**
- BB3B8RD / BB3B8RS** Cemento Nat. Rett. ● **42**
- E9F1 / E9F2**
- BB3B9RD / BB3B9RS** Lavagna Nat. Rett. ● **42**