



Wall Tile: Oyster Ivory, Dc. Oyster Warm, 33,3x100 / 13"x40"



Oyster

Colores / Colours



Oyster Ivory



Rlv. Oyster Ivory



Oyster Noce



Rlv. Oyster Noce



Rlv. Oyster Warm



Oyster White



Rlv. Oyster White



Oyster Grey



Rlv. Oyster Grey

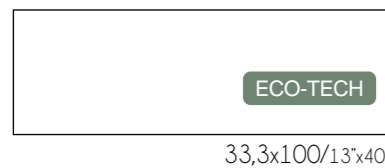


Rlv. Oyster Cold

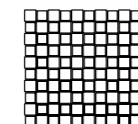
Características técnicas / Technical features



Formatos / Sizes



33,3x100/13"x40"



28x28(2,7x2,7)

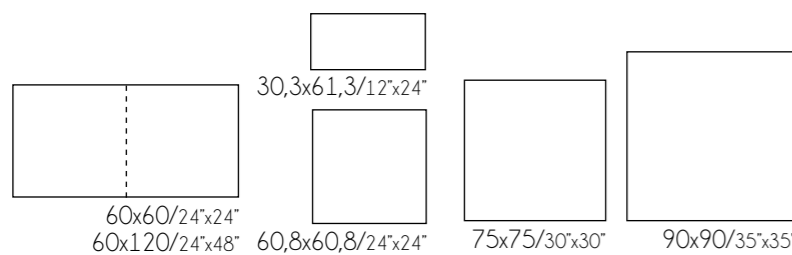
* Más diseños en pág. 482 /
More mosaics pag. 482

Less thickness
Less clay
Less weight
Less CO₂ emissions
For a better planet



Completa la colección / Complete the collection

porcelain



* Más información / More information pág. 348

Packing list

Código de tarifa / Price list

Formato/Size	pz/cj	m ² /cj	kg/cj	cj/pl	m ² /pl	kg/pl
33,3x100	6	2	24	48	96	1174

Formato/Size	Código de tarifa/Price list
33,3x100	BM0627
33,3x100 Rlv.	BM0627 D



Floor Tile: Oyster Grey, 60x120 / 24"x48"

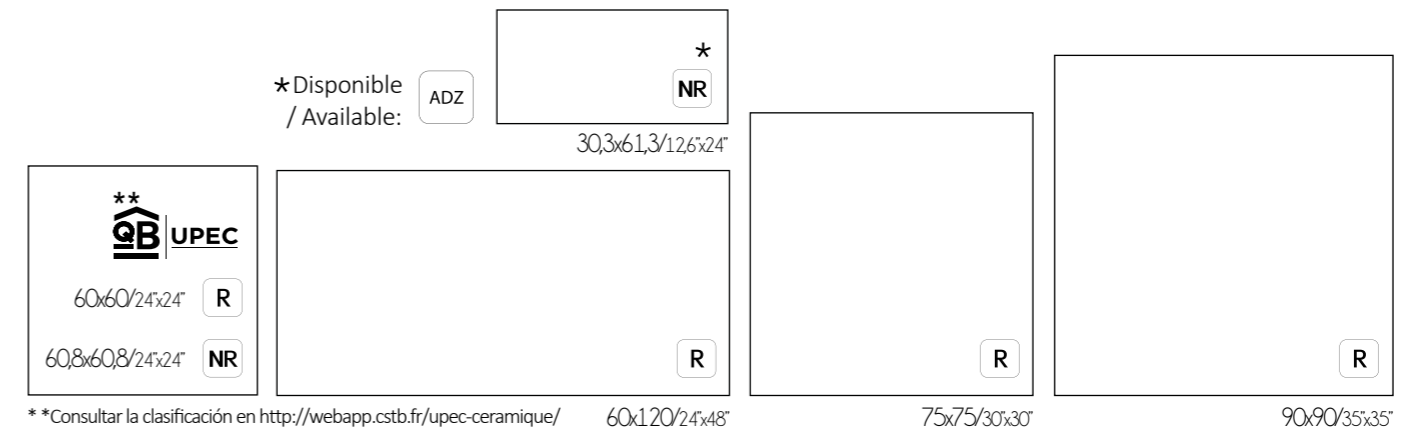


Oyster

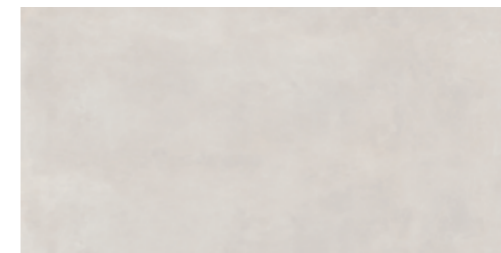
Características técnicas / Technical features



Formatos / Sizes



Colores / Colours



Oyster White



Oyster Grey



Dc. Oyster Cold 30,3X61,3



Oyster Ivory



Oyster Noce



Dc. Oyster Warm 30,3X61,3

Packing list

Código de tarifa / Price list

Formato/Size	pz/cj	m ² /cj	kg / cj	cj/pl	m ² /pl	kg / pl
30,3x61,3	7	1,3	26	40	52	1060
60x60	4	1,44	30,20	30	43,20	926
60,8x60,8	4	1,48	31	30	44,40	950
75X75	3	1,69	41,20	30	50,70	1256
60X120	2	1,44	27,70	36	51,84	1017
90X90	2	1,62	42	27	43,74	1164

Formato/Size	Código de tarifa/Price list
30,3x61,3	PM0722 / PM0722 A
60x60	PM0840
60,8x60,8	PM0440
75X75	PM0875
60X120	PM0250
90X90	PM0804